

<div><div><div>BAKER HUGHES</div><div>BAKER Atlas</div></div><div><div>RADIAL ANALYSIS</div><div>BOND LOG</div></div></div>				
File No:	Company		WILLIAMS	
API No:	Well		SG 13-26	
05-045-15374	Field		SOUTH GRAND VALLEY	
	County		GARFIELD	
	State		COLORADO	
THANK YOU FOR USING BAKER ATLAS	Location		Other Services	
	SEC 26 TWP 75 RGE 98W		RPM	
Permanent Datum	GL		Elevations	
Log Measured From	KB		5049 ft	
Drill Measured From	KELLEY BUSHING		DF 5034 ft	
			GL 5034 ft	
Date	08/02/08			
Run	1			
Service Order	S47327			
Depth Driller	5220 ft			
Depth Logger	5147 ft			
Bottom Logged Interval	5147 ft			
Top Logged Interval	980 ft			
Time Started	14:00			
Time Finished	16:00			
Operator Rig Time	2			
Type of Fluid in Hole	WATER			
Fluid Density	N/A			
Salinity	N/A			
Fluid Level	FULL			
Logged Cement Top	1350 ft			
Wellhead Pressure	0 psi			
Maximum Hole Deviation	N/A			
Nominal Logging Speed	35 fpm			
Maximum Recorded Temperature	N/A			
Reference Log	BAKER ATLAS RPM			
Reference Log Date	7/13/08			
Equipment No.	4214			
Recorded By	D. COLVIN			
Witnessed By	MR. TREVOR GATES			

- FOLD HERE

In making interpretations of logs, our employees will give the customer the benefit of their best judgement. But since all interpretations are opinions based on inferences from electrical or other measurements, we cannot, and we do not guarantee the accuracy or correctness of any interpretation. We shall not be liable or responsible for any loss, cost, damages, or expenses whatsoever incurred or sustained by the customer resulting from any interpretation made by any of our employees.

Borehole Record		
Bit Size	From	To

Casing Record				
Size	Weight	Grade	From	To
4.5 In				

Remarks
LOGGED RADII FROM TD TO 100 FEET ABOVE SURFACE CASING.

Equipment Data					
Run	Trip	Tool	Series Number	Serial Number	Position
0	0	GR	2459XA	10124123	CENTRALIZED
0	0	VDL	1428XA	123	CENTRALIZED

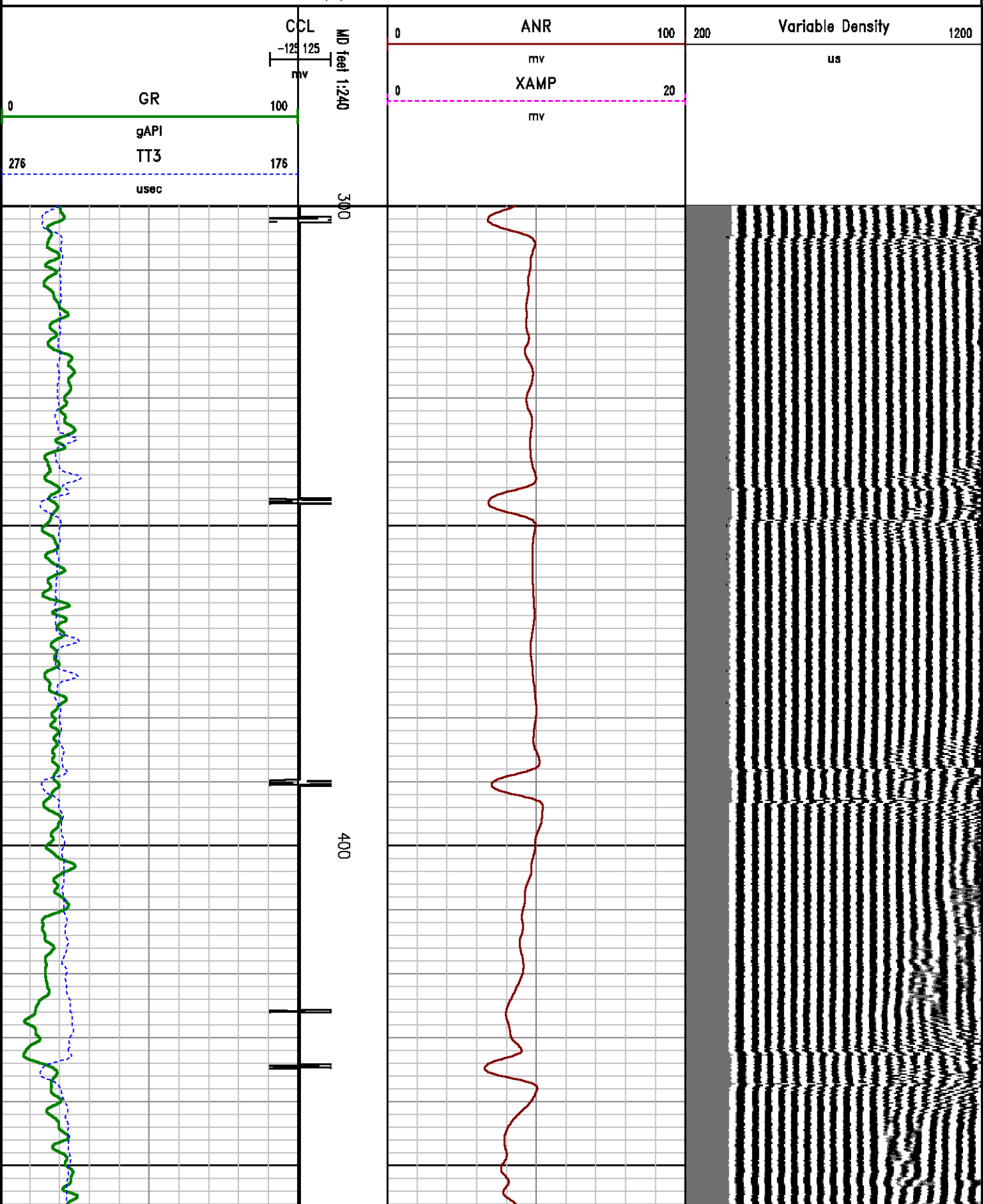
FREE PIPE PASS
0 PSI

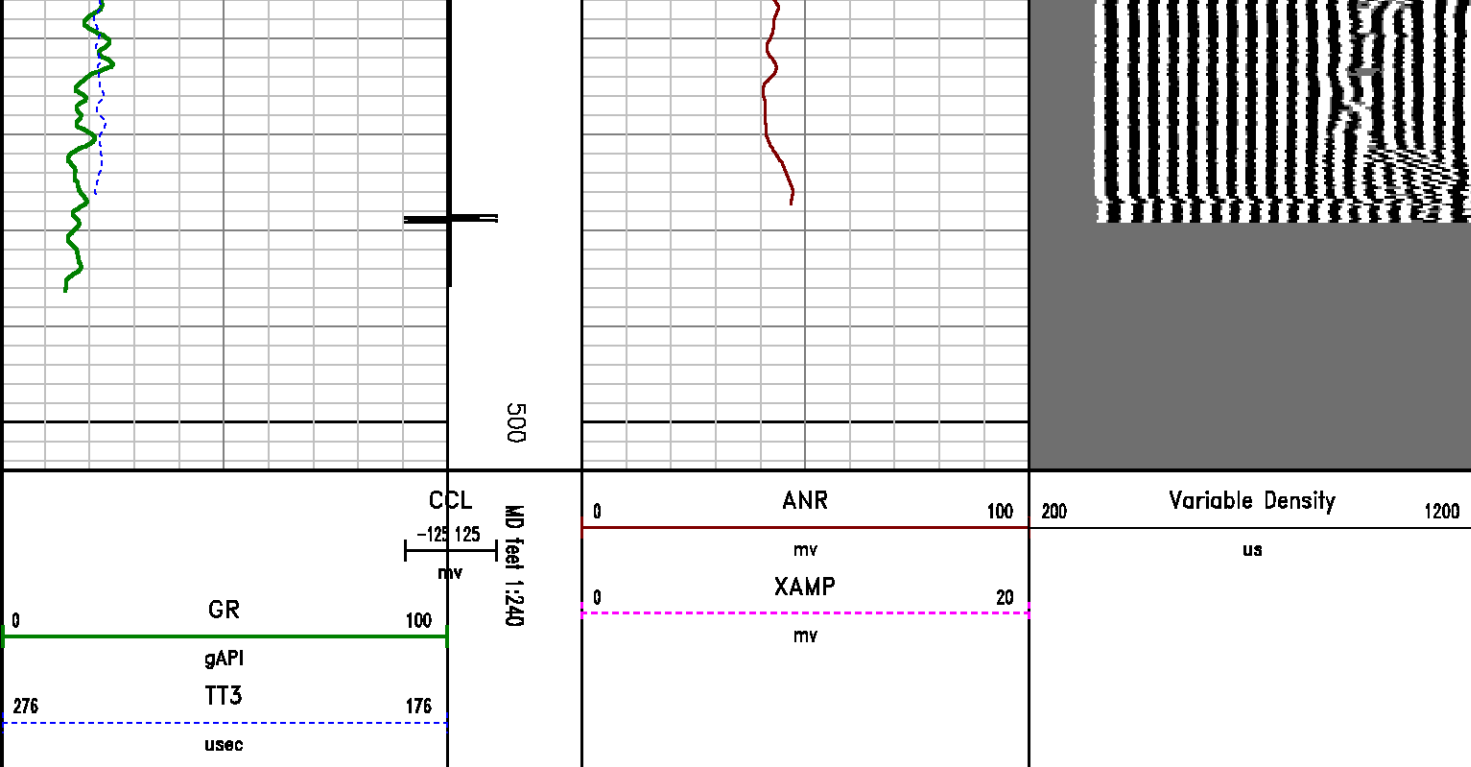
MEASUREMENT TYPE	PARAMETER	VALUE	UNITS	TOP	BOTTOM
RAL	Amp Gate Start Far	352.313	usec	299.750	505.000
RAL	Amp Gate Start Near	252.954	usec	299.750	505.000
RAL	Amp Gate Start Radial	247.316	usec	299.750	505.000
RAL	Amp Gate Width Far	30.658	usec	299.750	505.000
RAL	Amp Gate Width Near	29.759	usec	299.750	505.000
RAL	Amp Gate Width Radial	37.287	usec	299.750	505.000
RAL	casing od	4.500	inches	299.750	505.000
RAL	casing wt	11.600	lbm/ft	299.750	505.000
RAL	FB Start Far	268.626	usec	299.750	505.000
RAL	FB Start Near	175.391	usec	299.750	505.000
RAL	FB Start Radial	175.391	usec	299.750	505.000
RAL	FB Thresh Far	15.000	mv	299.750	505.000
RAL	FB Thresh Near	4.000	mv	299.750	505.000
RAL	FB Thresh Radial	4.000	mv	299.750	505.000
RAL	Fluid Travel Time	200.000	usec/ft	299.750	494.320

DEPTH OFFSETS
(for Acquired Curves)

SERIES	DEPTH OFFSET	ACQUIRED CURVES					
1426XA	-15.360	ACAL	ANR	AR1	AR2	AR3	AR4
		AR5	AR6	AR7	AR8	CHV	FPR2
		FPR3	FPR5	TT3	TTR1	TTR2	TTR3
		TTR4	TTR5	TTR6	TTR7	TTR8	XAMP
1426XA	-14.360	AFAR	SIG	TT5			
1426XA	-7.250	CCL					
1426XA	-5.390	GR					
1426XA	0.000	NEU					

Created by : RAL, v4.8.007
Plotted by : PlotMgr, v5.4.504
Company : WILLIAMS
Well : SG 13-26
File Name : D:\WELLDATA\WILLIAMSFINAL\B1326\FREE.XTF
Mode : PlotMgr 5.4.504
Interval : 300.00 - 505.00 feet UP
Created : 8/3/2008 2:58:37 PM





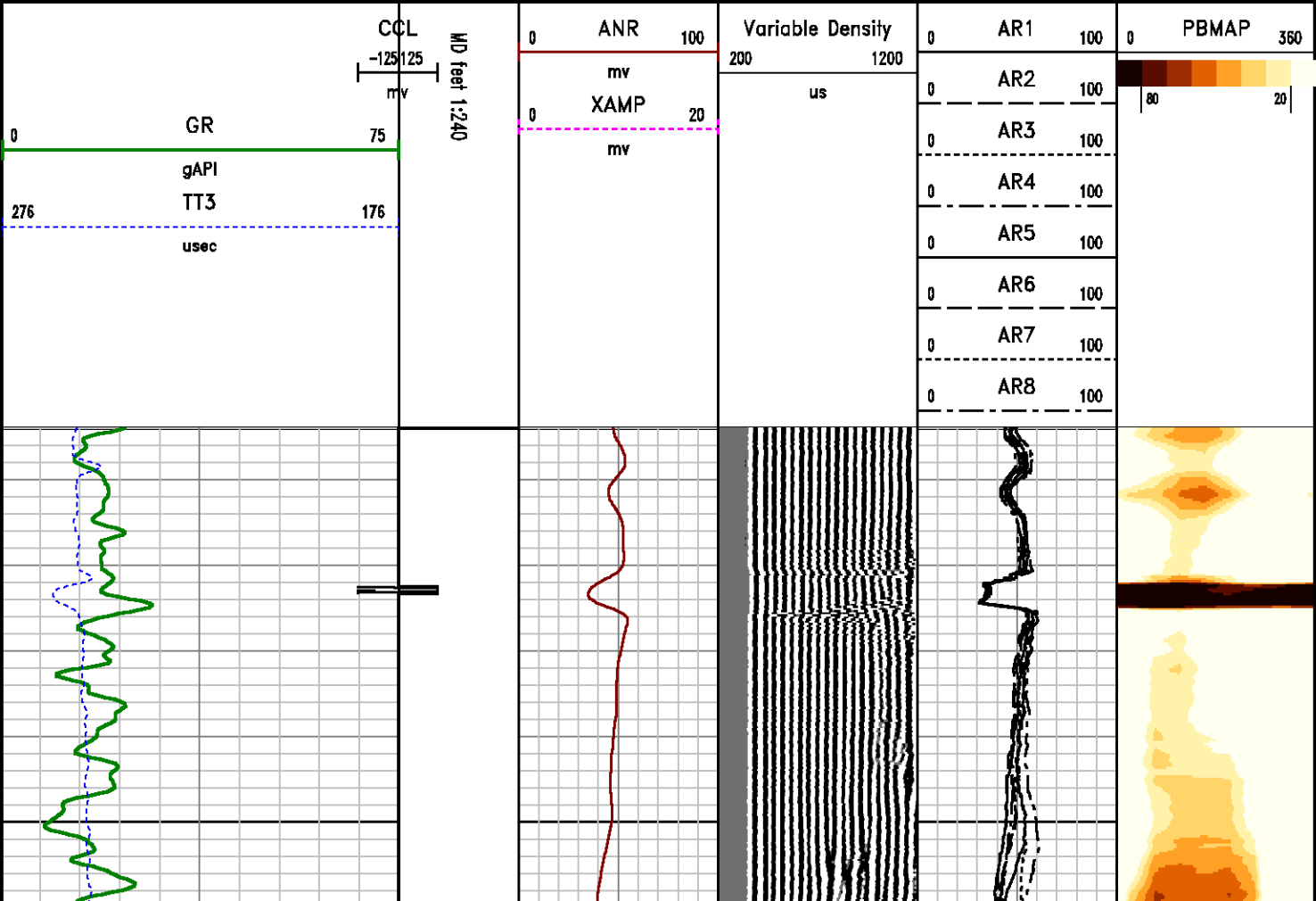
MAIN PASS
0 PSI

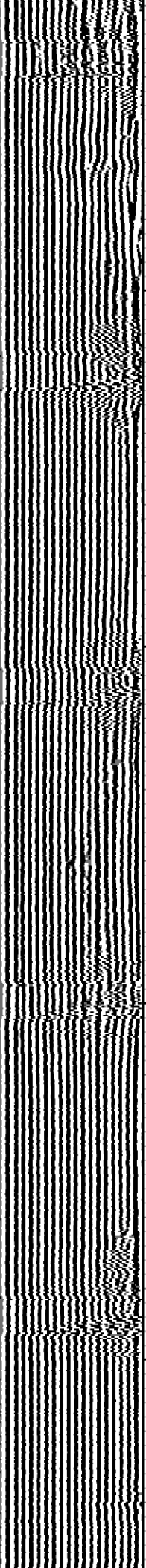
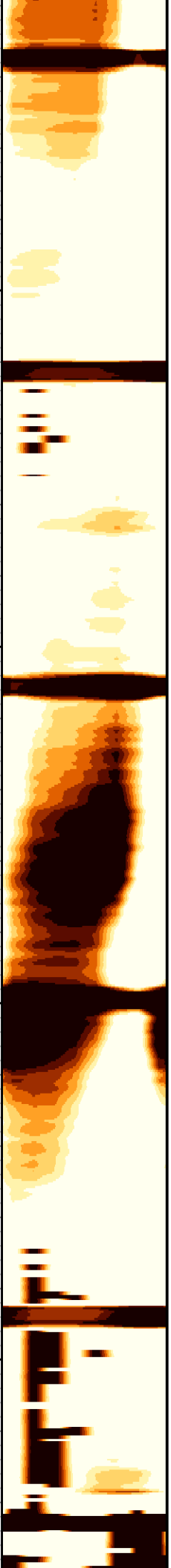
MEASUREMENT TYPE	PARAMETER	VALUE	UNITS	TOP	BOTTOM
RAL	Amp Gate Start Far	352.313	usec	903.995	5165.000
RAL	Amp Gate Start Near	252.954	usec	903.995	5165.000
RAL	Amp Gate Start Radial	247.316	usec	903.995	5165.000
RAL	Amp Gate Width Far	30.658	usec	903.995	5165.000
RAL	Amp Gate Width Near	29.759	usec	903.995	5165.000
RAL	Amp Gate Width Radial	37.287	usec	903.995	5165.000
RAL	casing od	4.500	inches	903.995	5165.000
RAL	casing wt	11.600	lbm/ft	903.995	5165.000
RAL	FB Start Far	268.626	usec	903.995	5165.000
RAL	FB Start Near	175.391	usec	903.995	5165.000
RAL	FB Start Radial	175.391	usec	903.995	5165.000
RAL	FB Thresh Far	15.000	mv	903.995	5165.000
RAL	FB Thresh Near	4.000	mv	903.995	5165.000
RAL	FB Thresh Radial	4.000	mv	903.995	5165.000
RAL	Fluid Travel Time	200.000	usec/ft	903.995	5164.741

DEPTH OFFSETS
(for Acquired Curves)

SERIES	DEPTH OFFSET	ACQUIRED CURVES					
1426XA	-15.360	ACAL	ANR	AR1	AR2	AR3	AR4
		AR5	AR6	AR7	AR8	CHV	FPR2
		FPR3	FPR5	TT3	TTR1	TTR2	TTR3
		TTR4	TTR5	TTR6	TTR7	TTR8	XAMP
1426XA	-14.360	AFAR	SIG	TT5			
1426XA	-7.250	CCL					
1426XA	-5.390	GR					
1426XA	0.000	NEU					

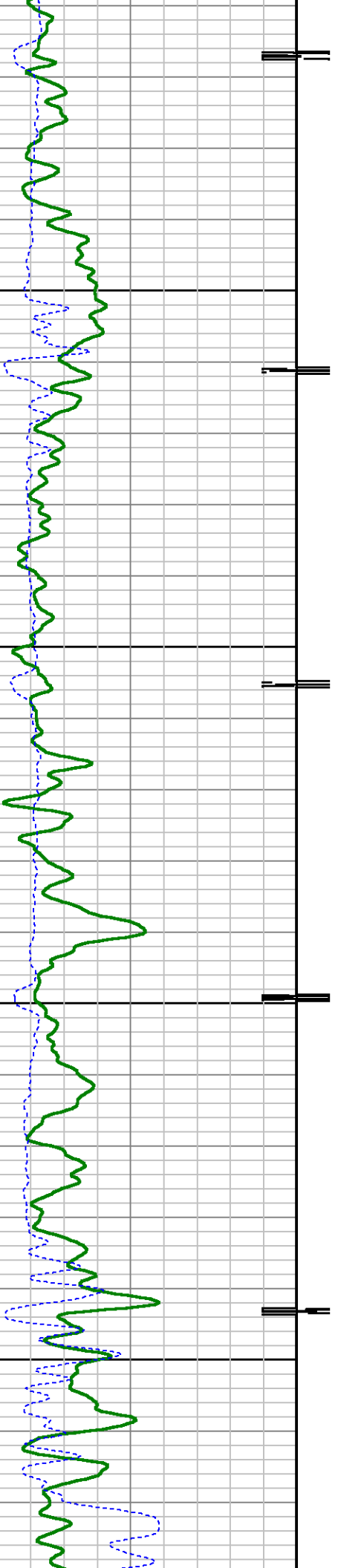
Created by : RAL, v4.8.007
Plotted by : PlotMgr, v5.4.504
Company : WILLIAMS
Well : SG 13-26
File Name : d:\welldata\williamsfinal\b1326\main.xtf
Mode : PlotMgr 5.4.504
Interval : 904.00 - 5165.00 feet UP
Created : 8/3/2008 1:22:19 PM

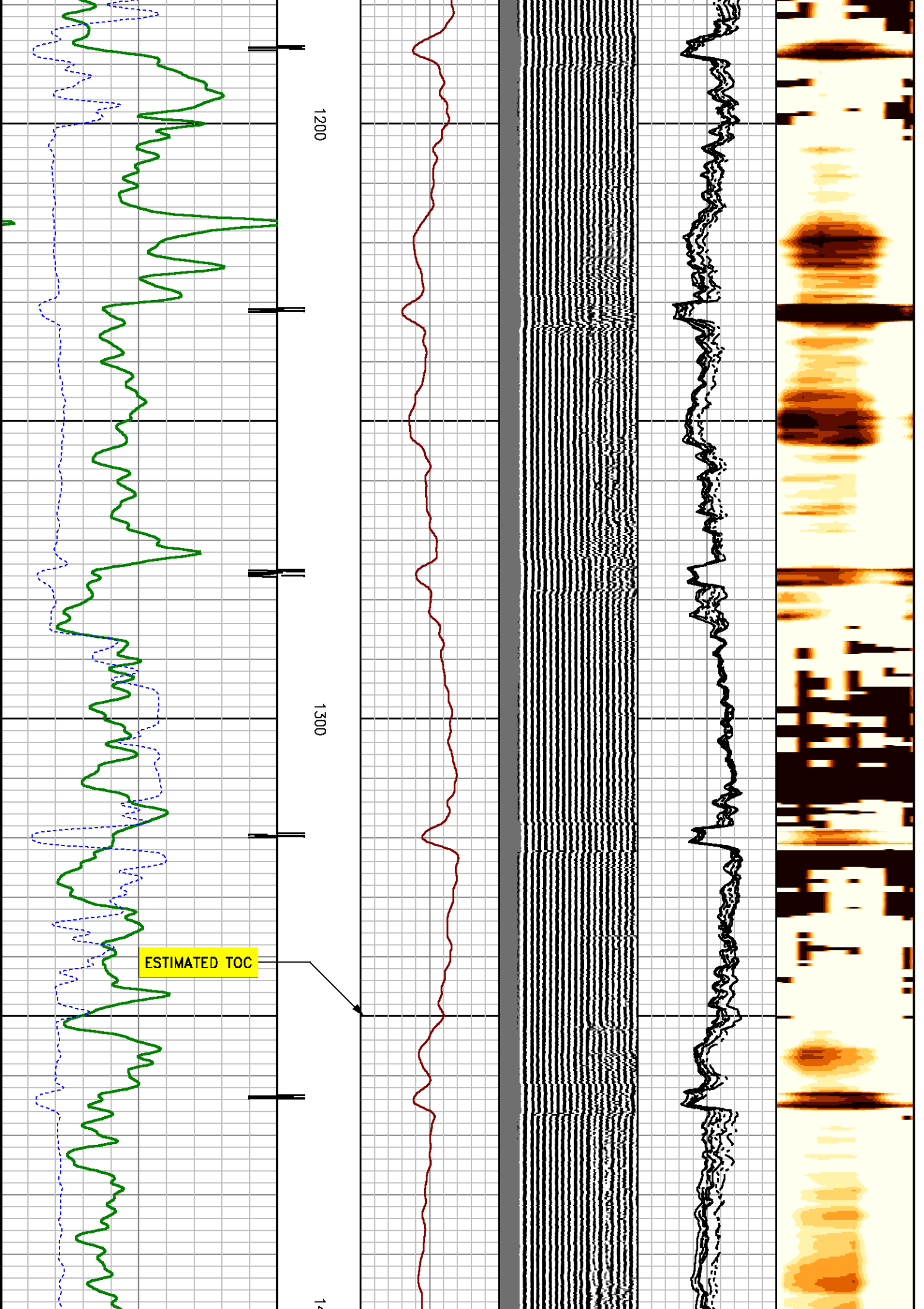


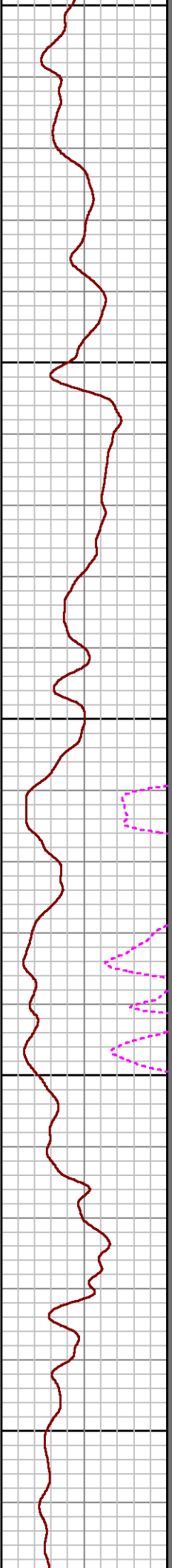
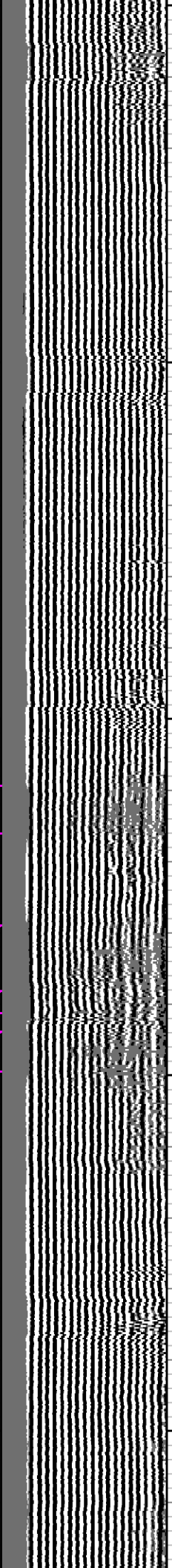


1000

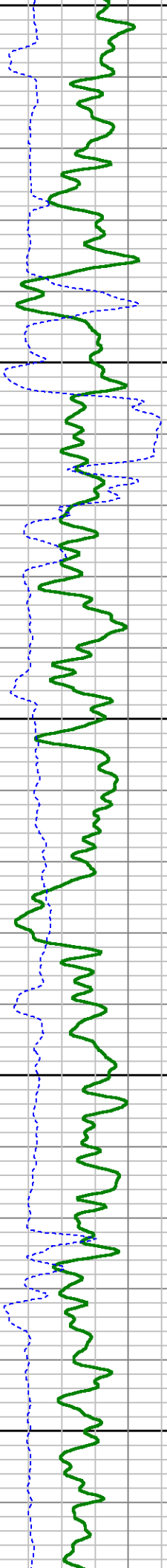
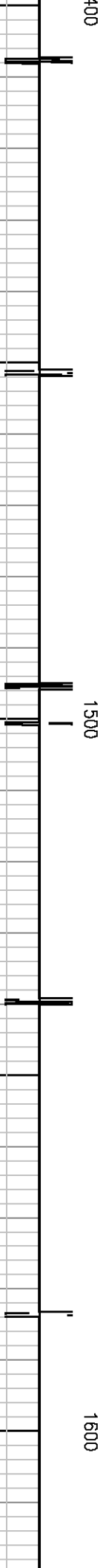
1100

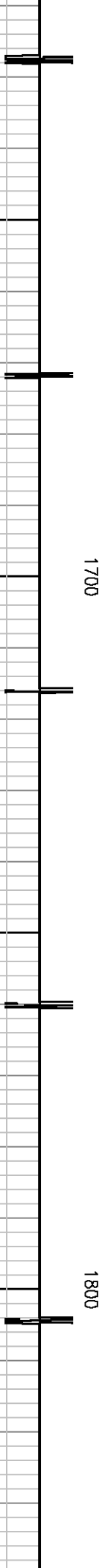
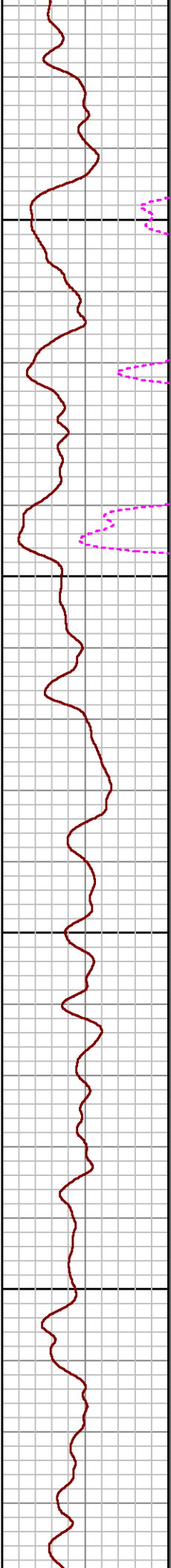
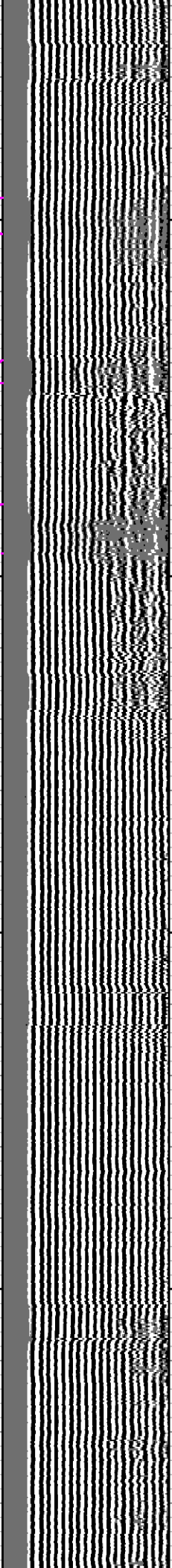
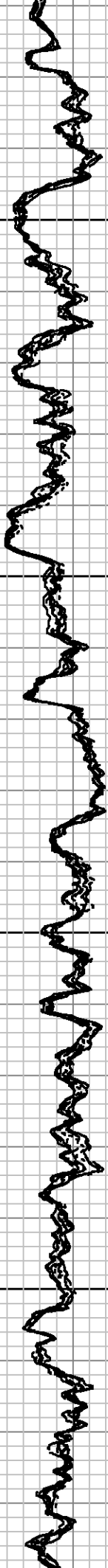






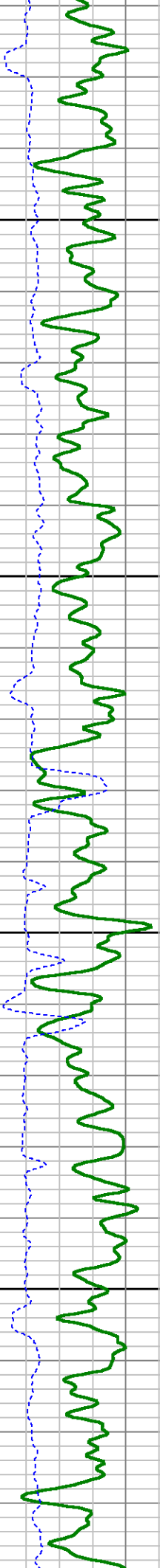
Handwritten text in red ink, possibly reading "D" and "V", located near the red line graph.

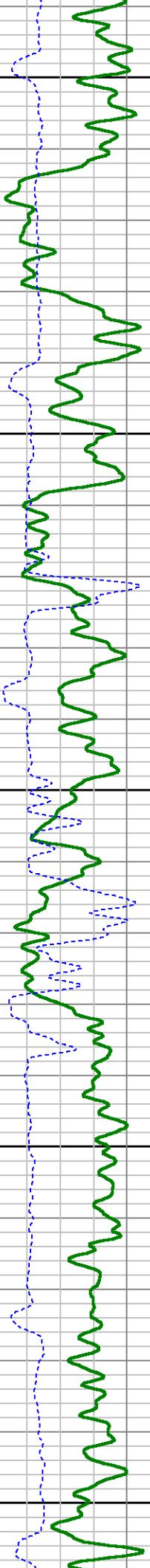
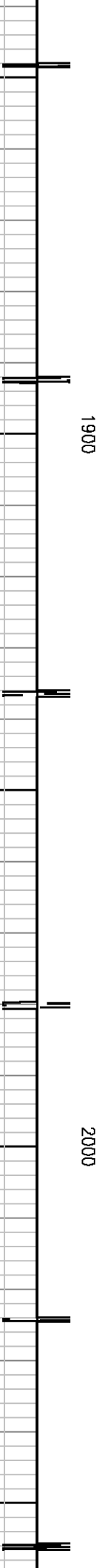
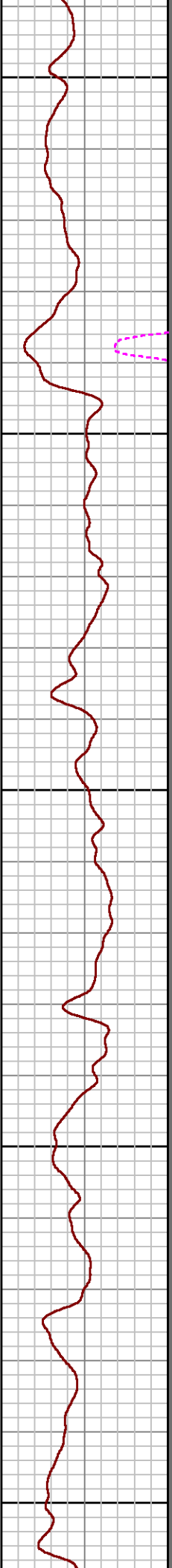
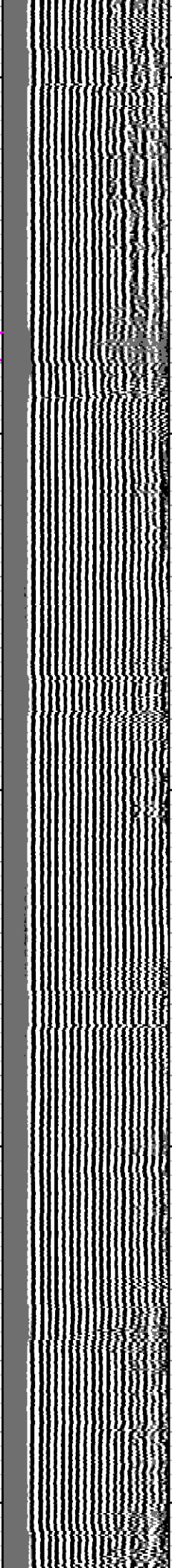
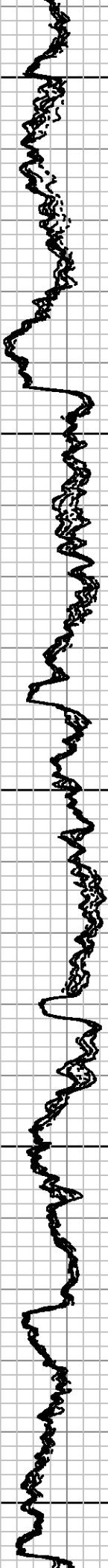


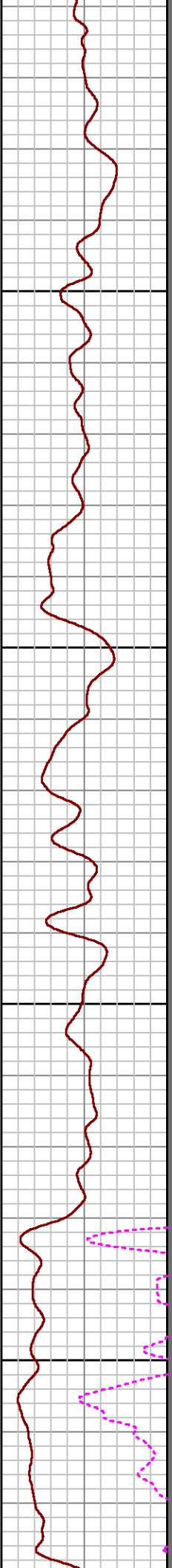
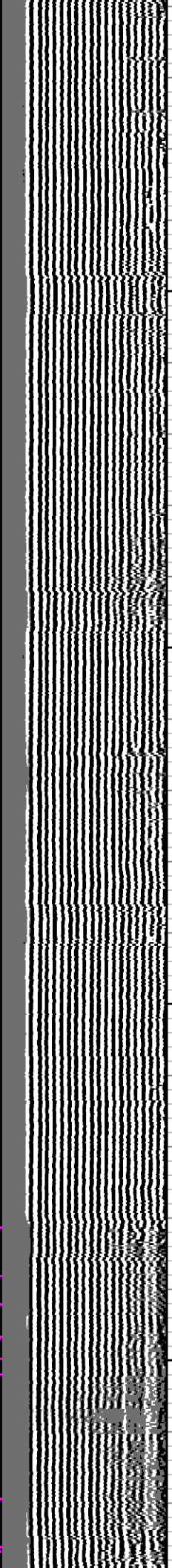


1700

1800

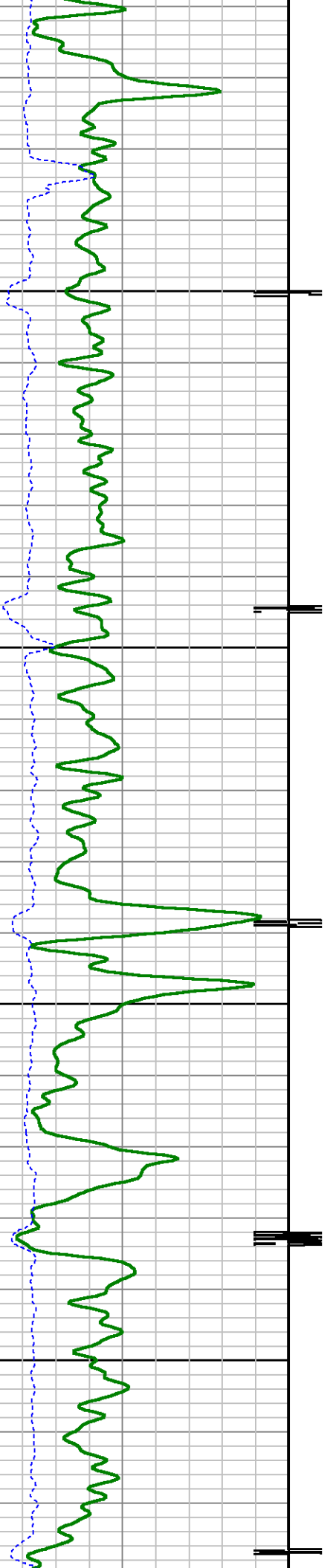


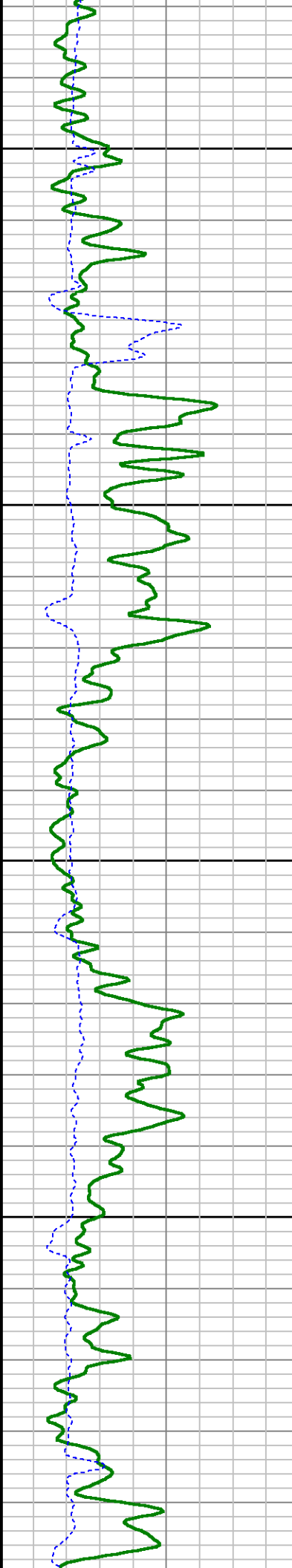
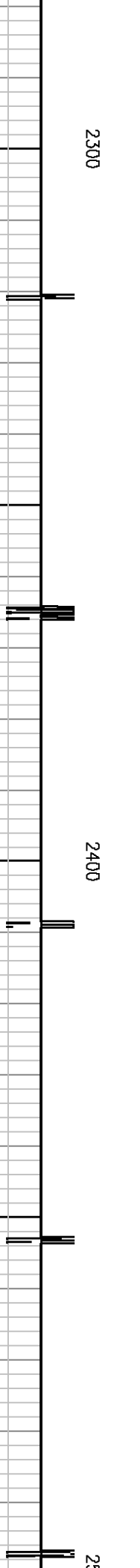
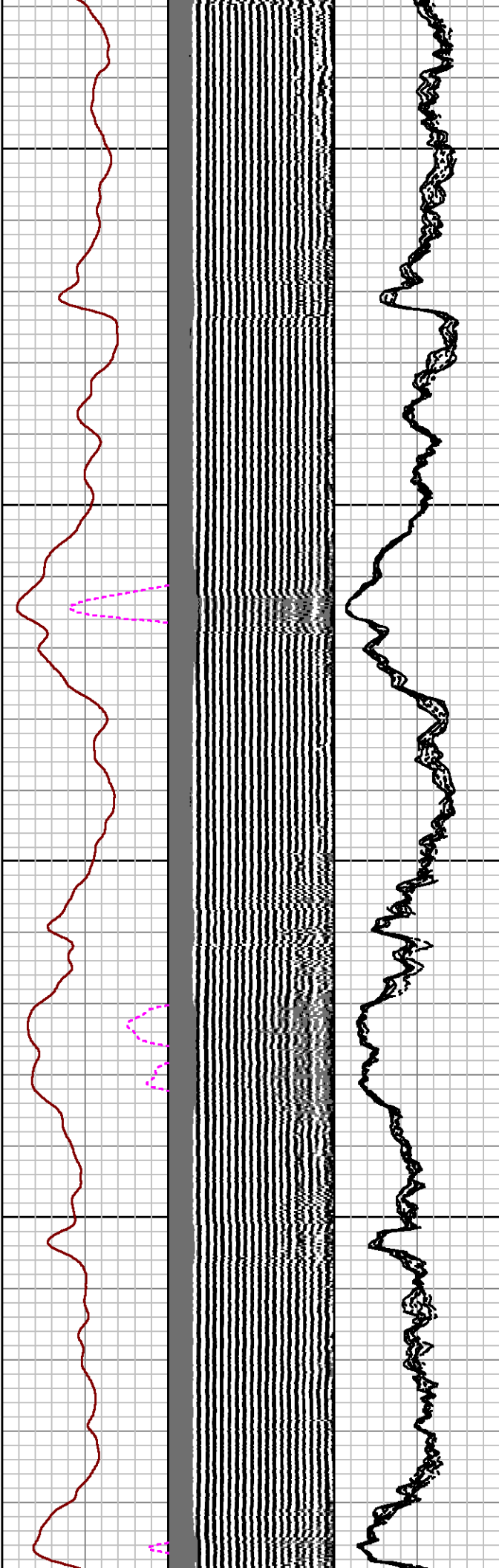
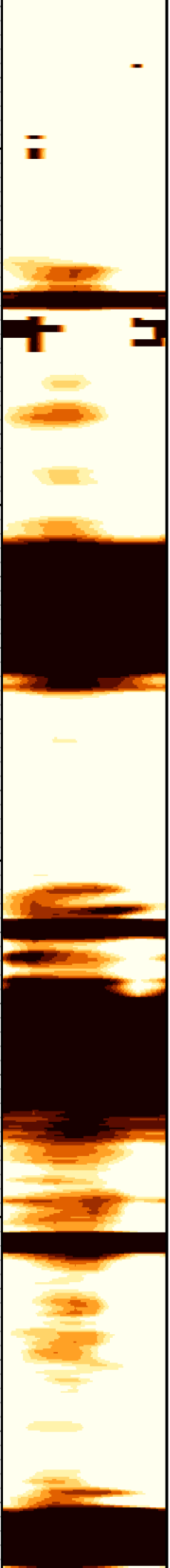


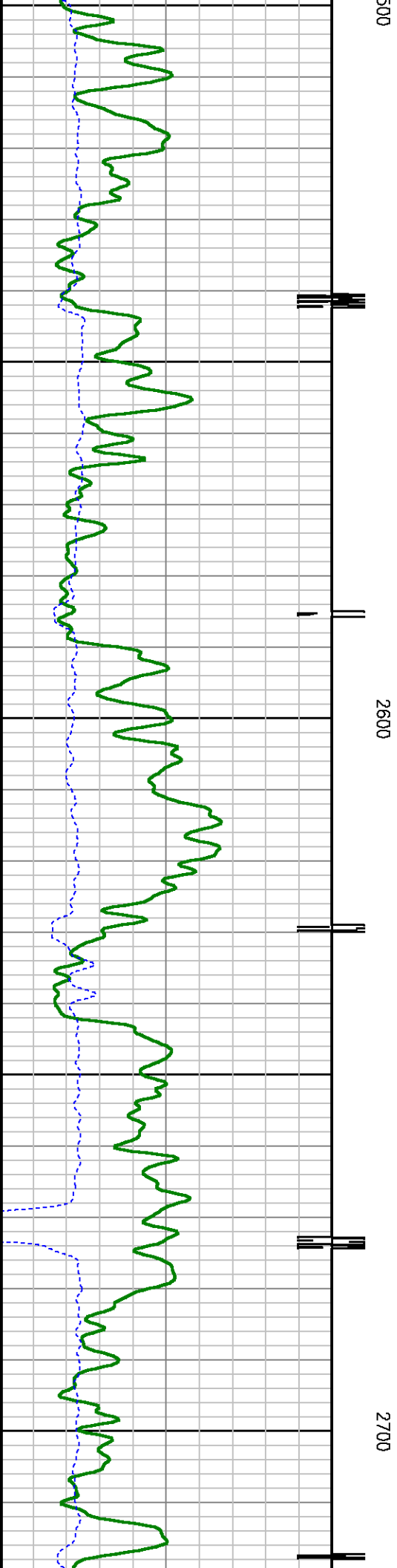
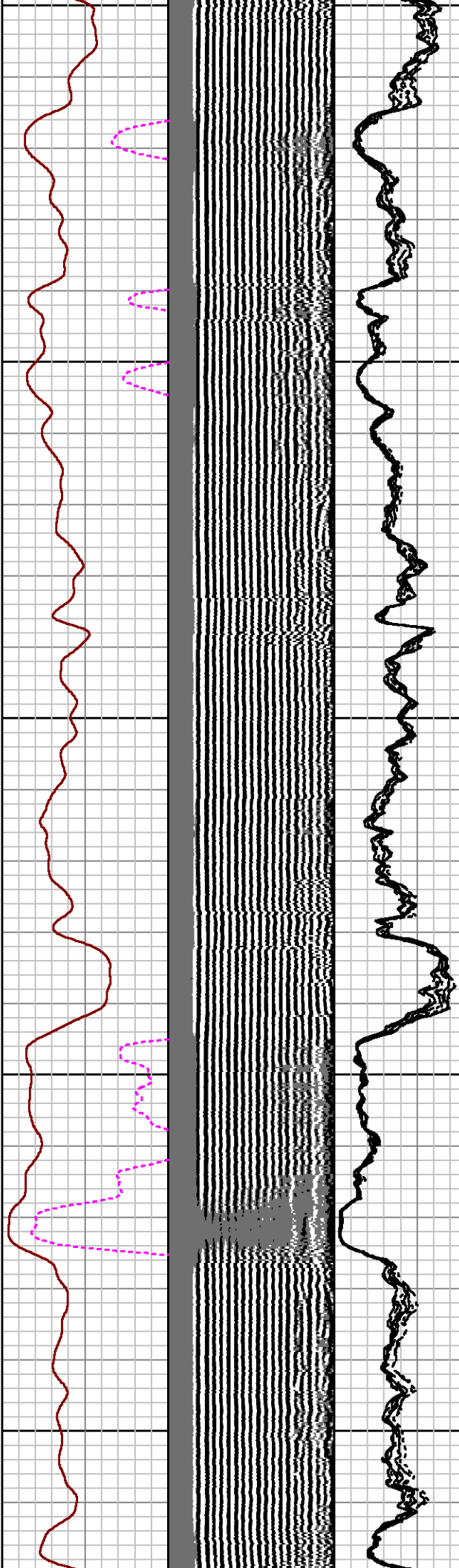
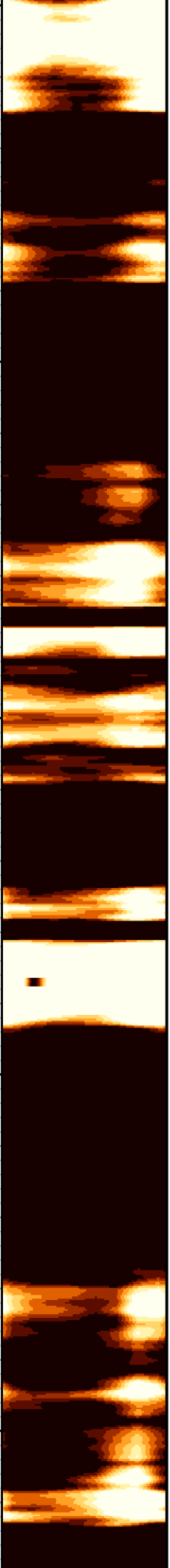


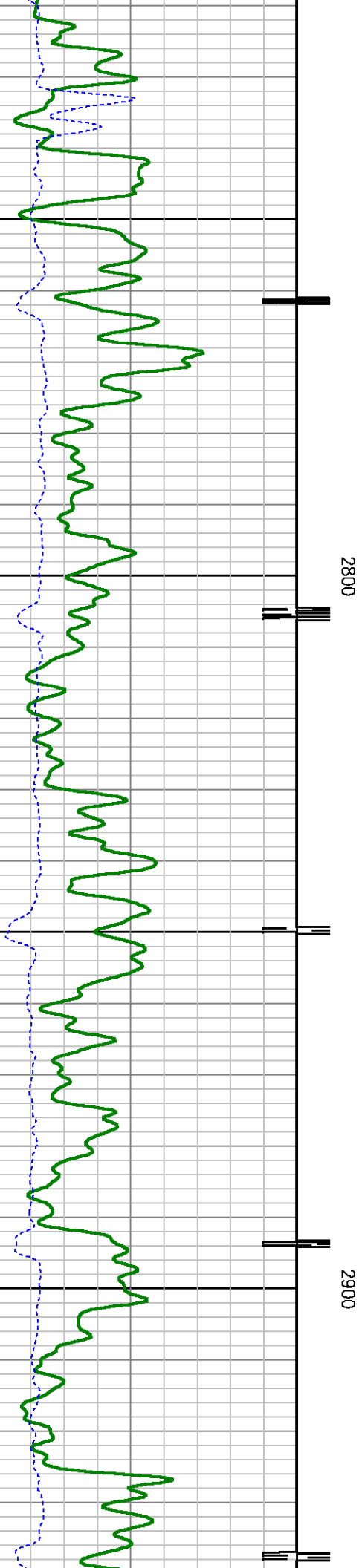
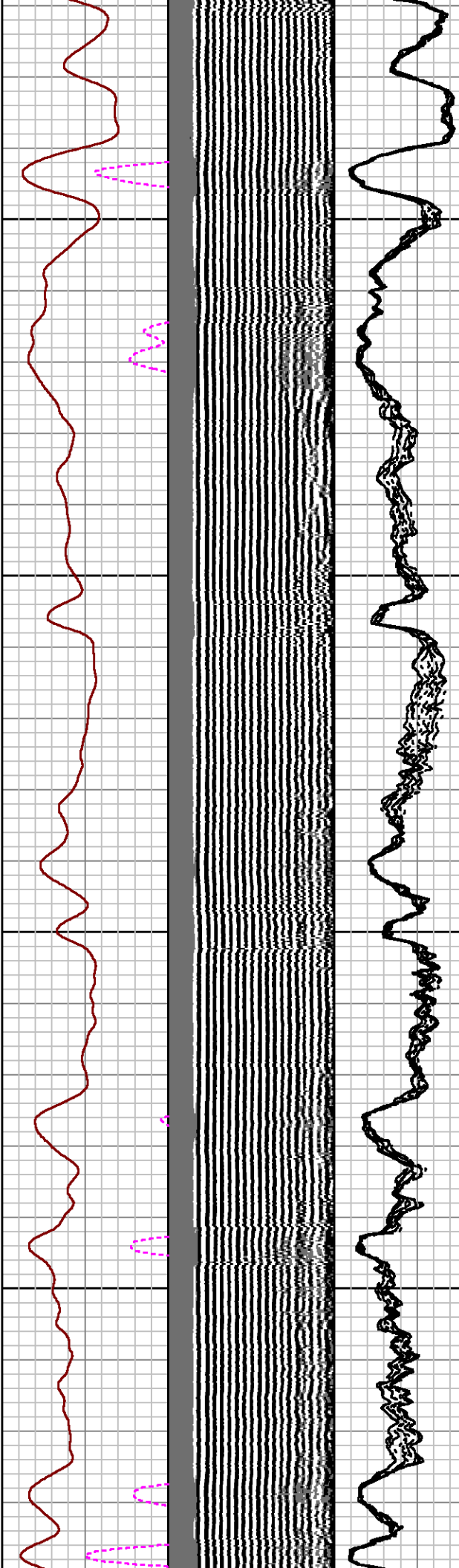
2100

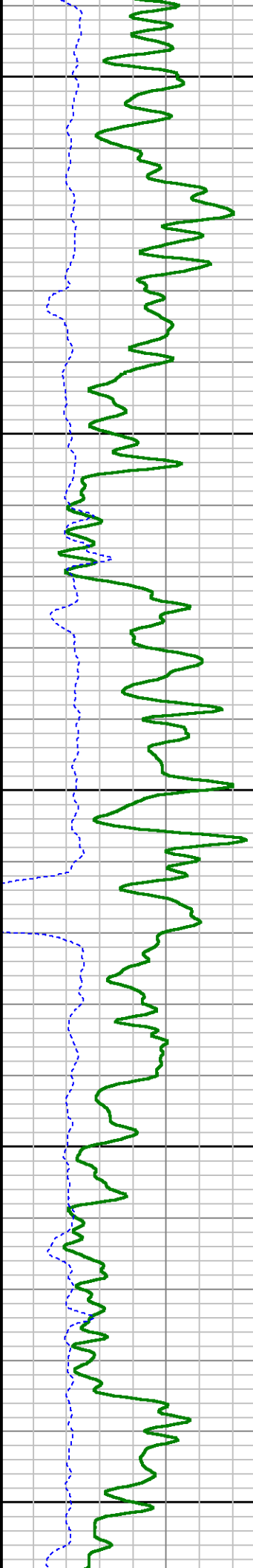
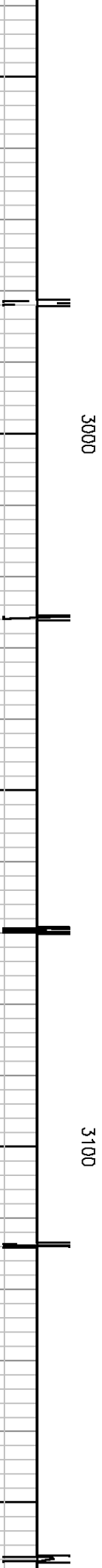
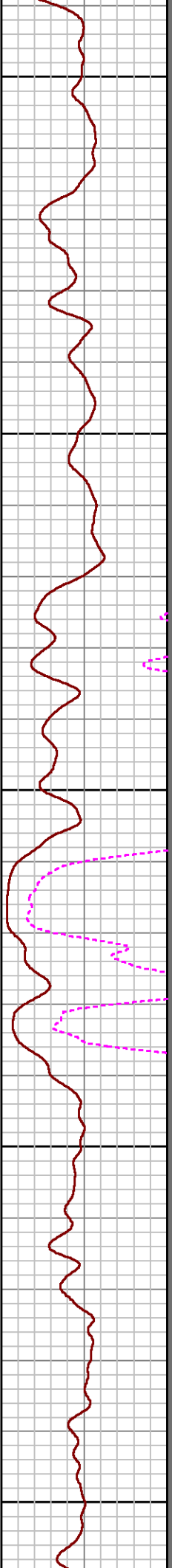
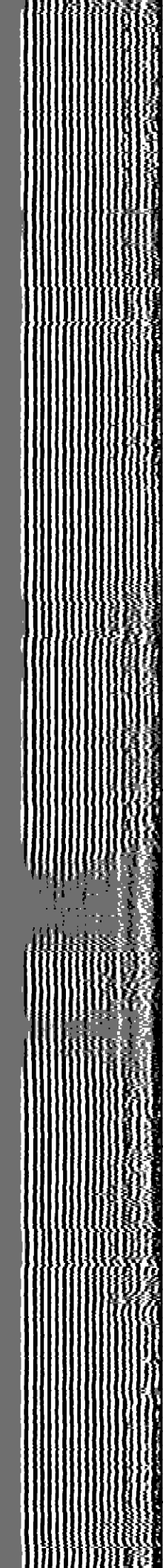
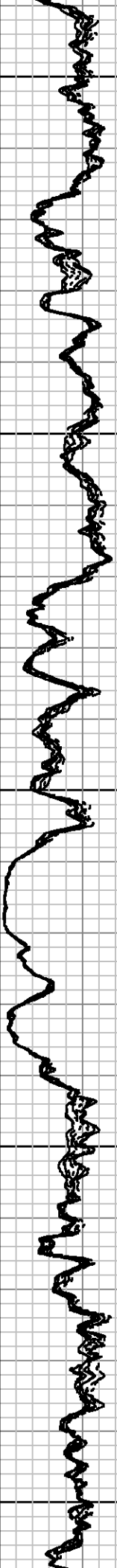
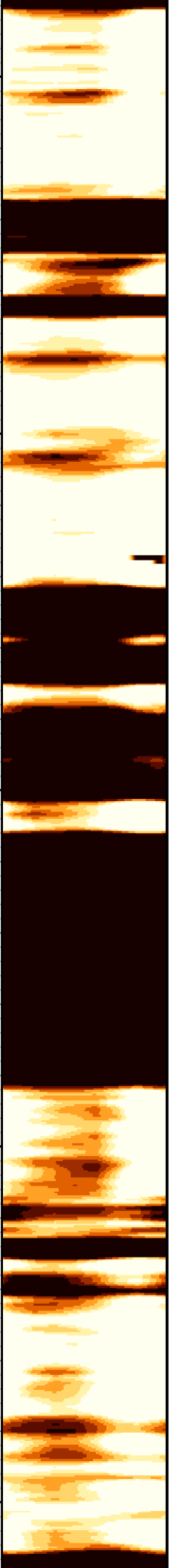
2200

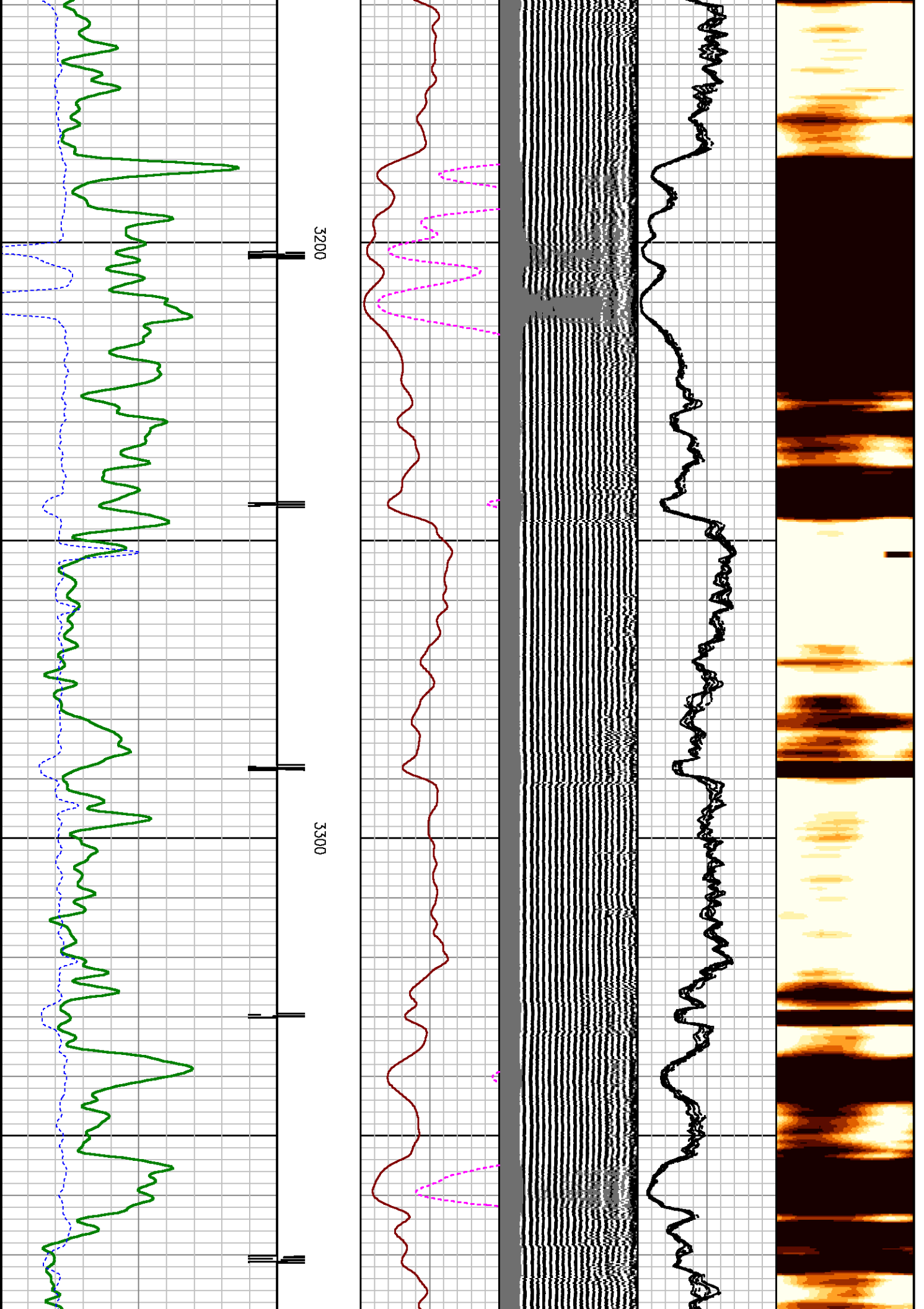


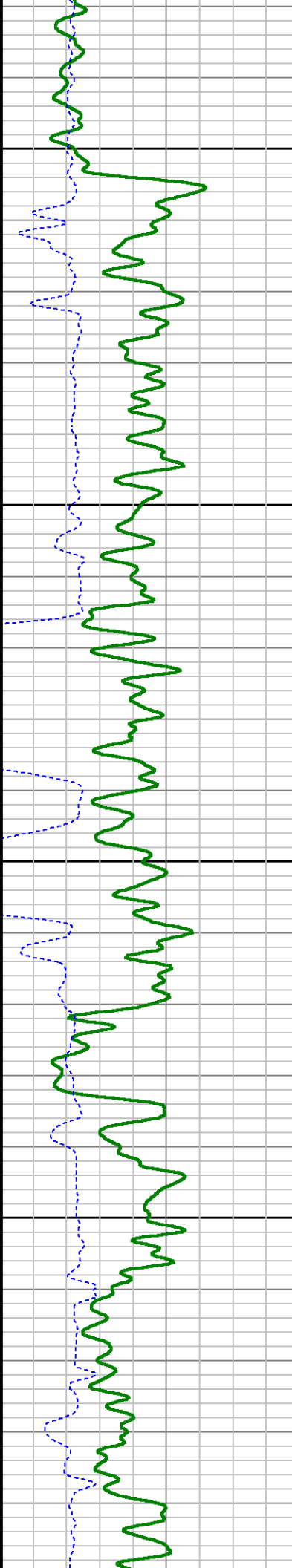
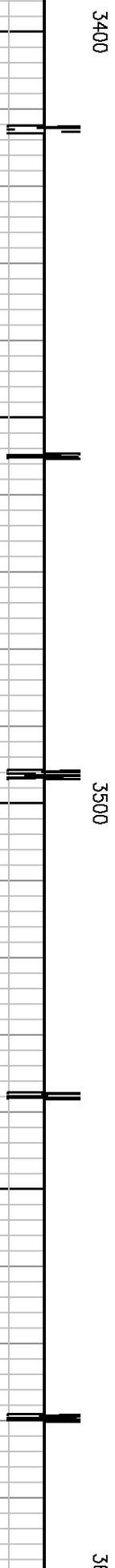
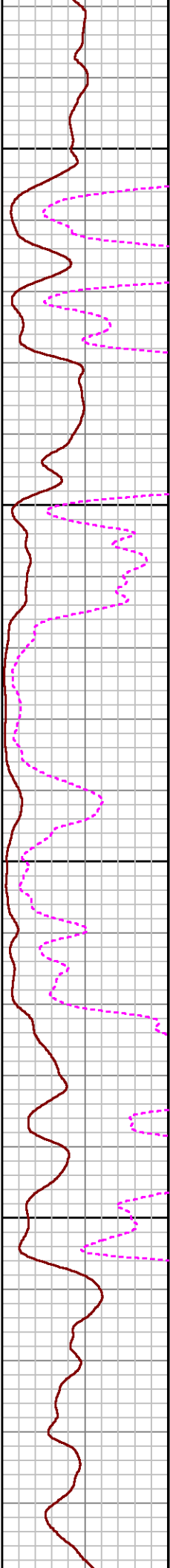
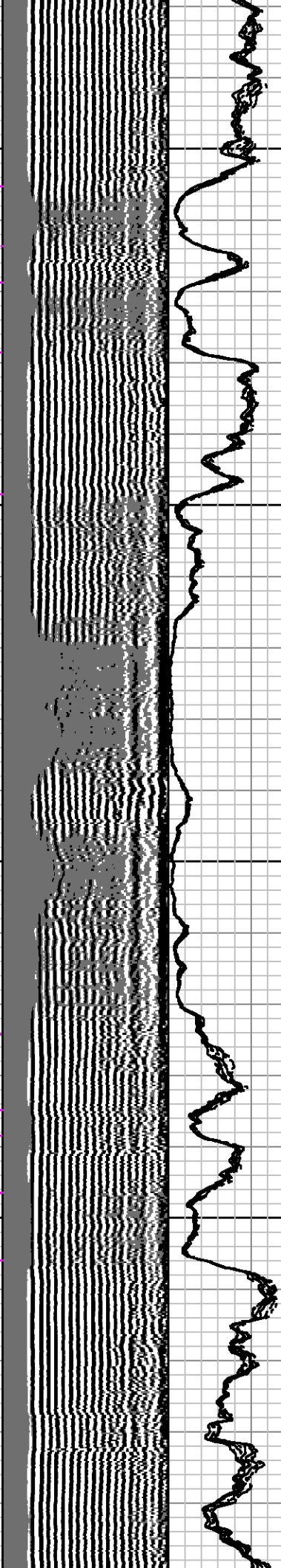
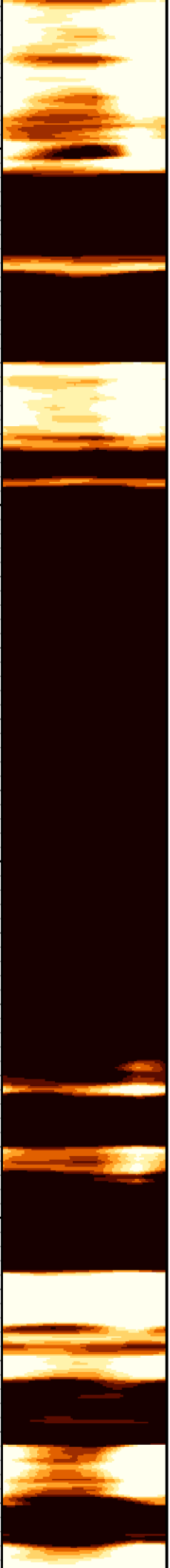


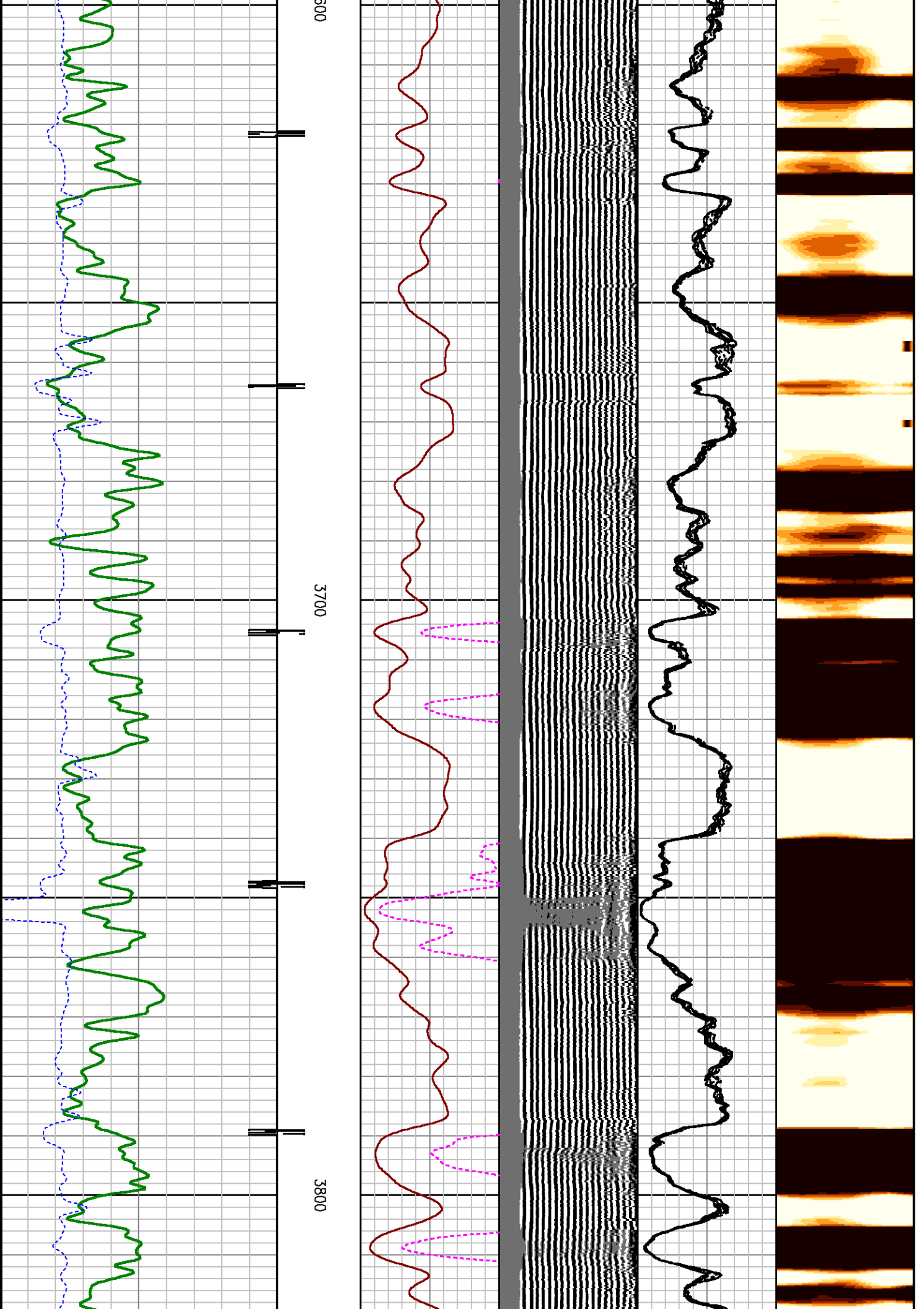


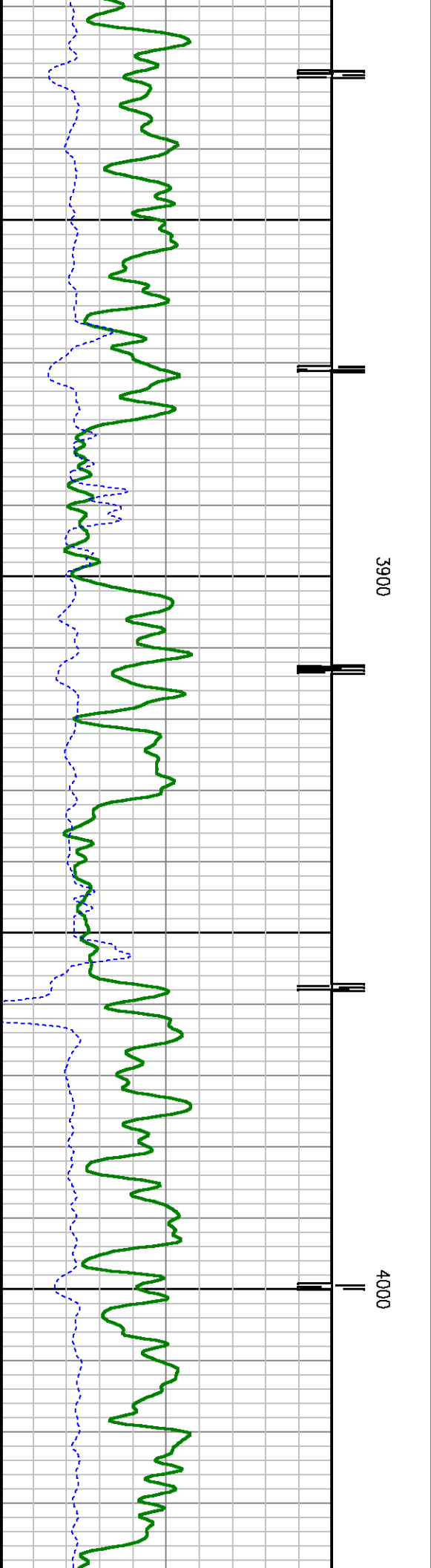
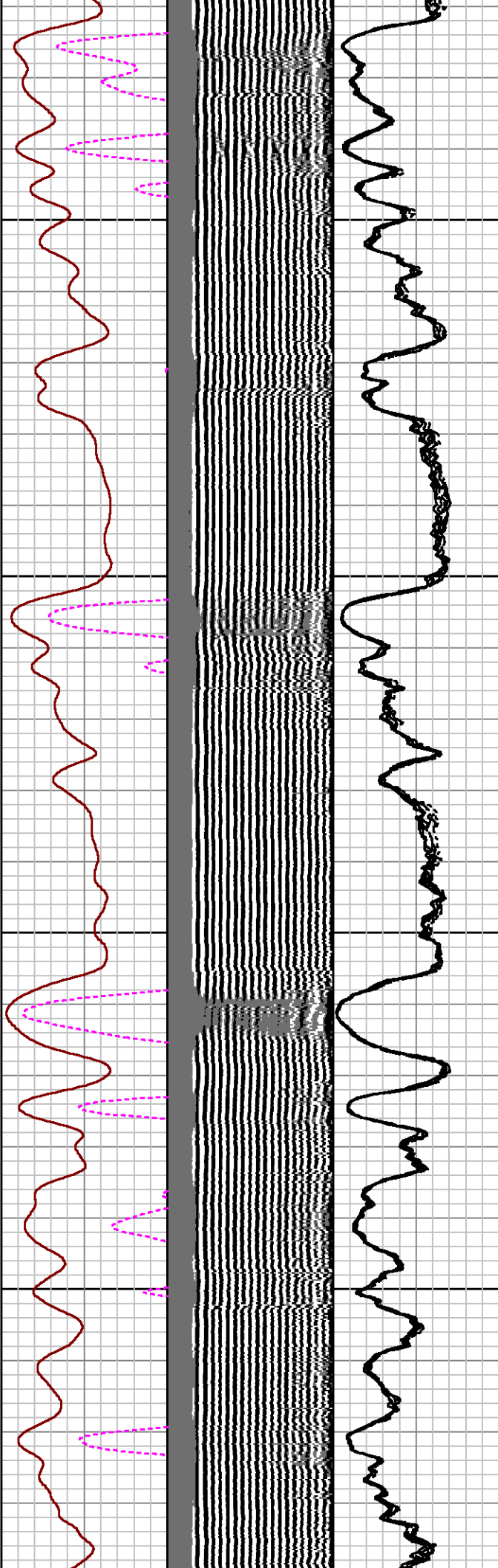


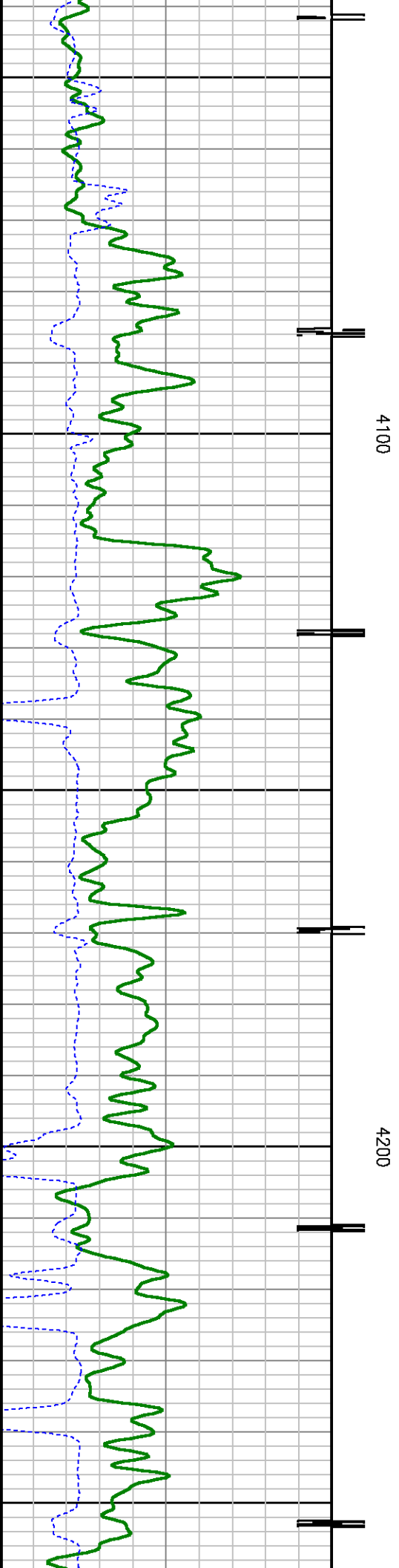
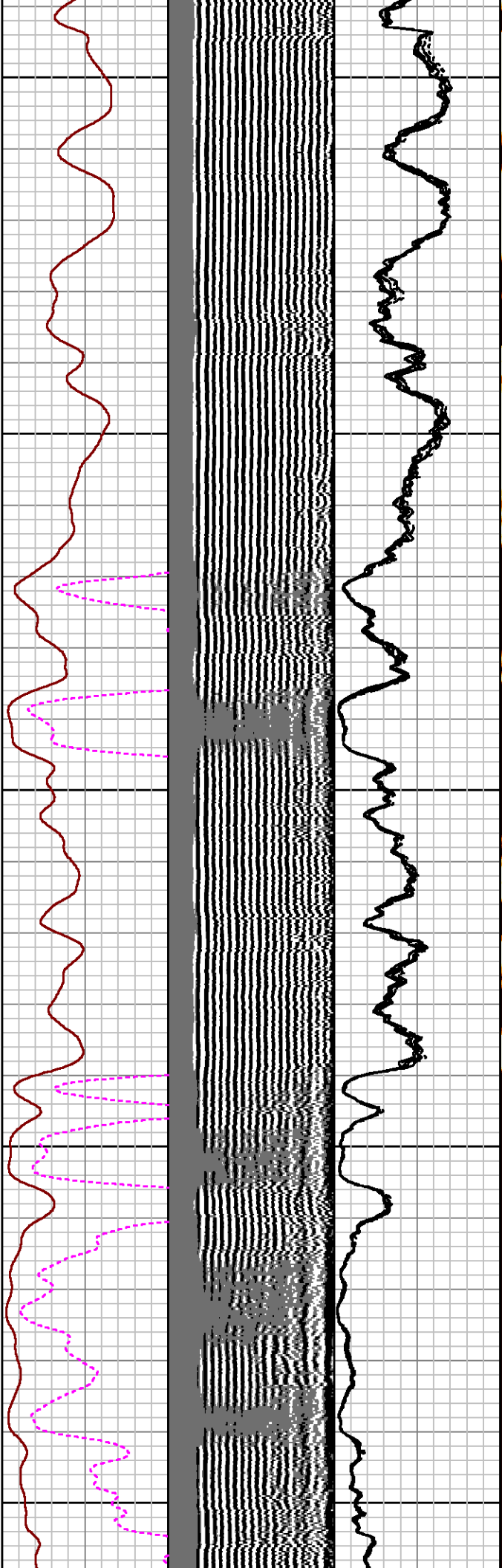
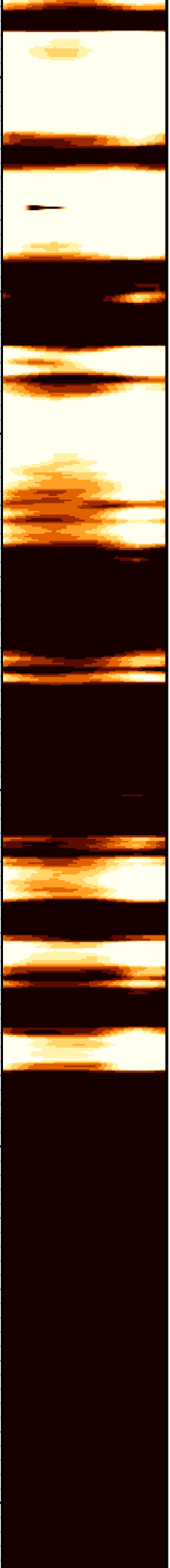


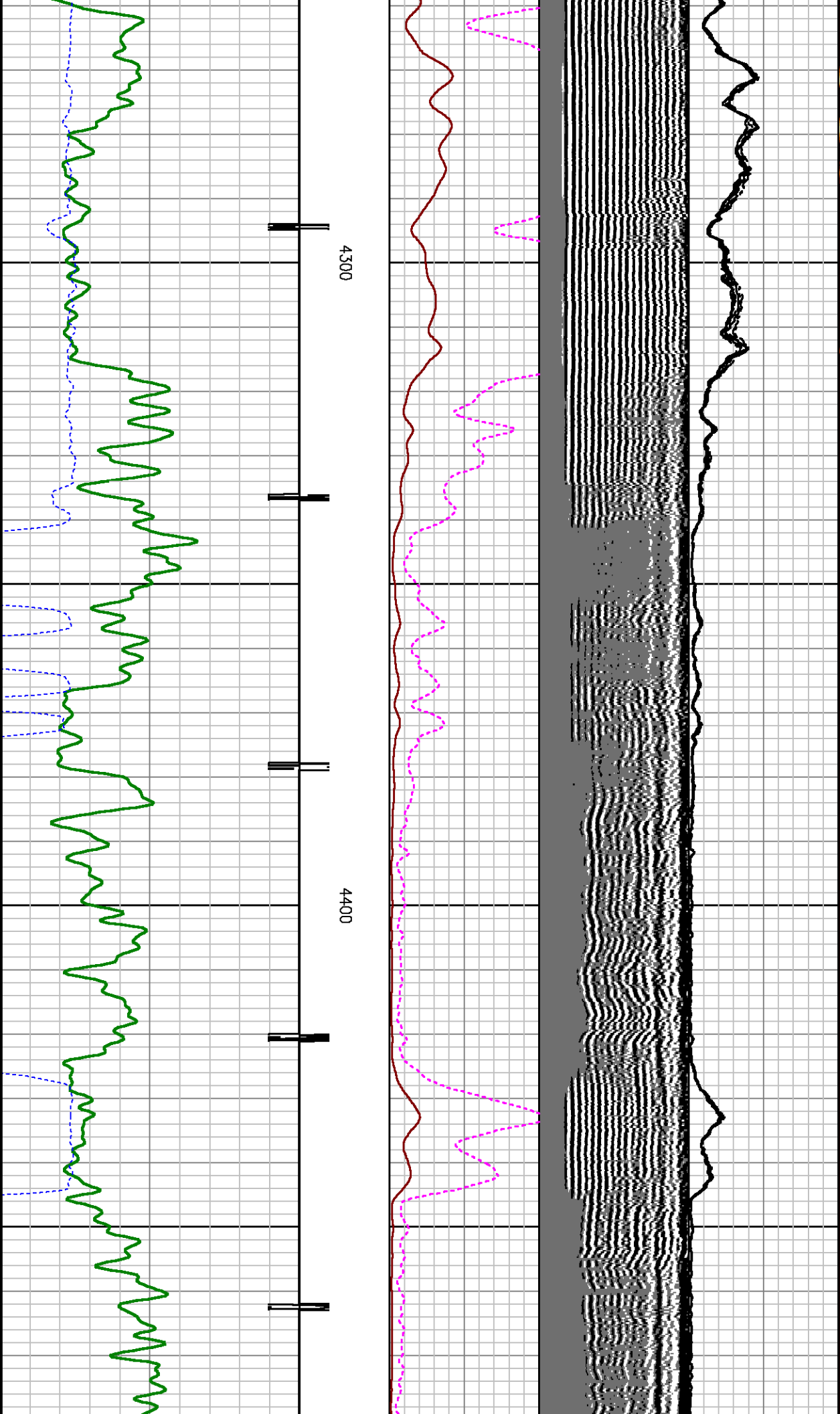
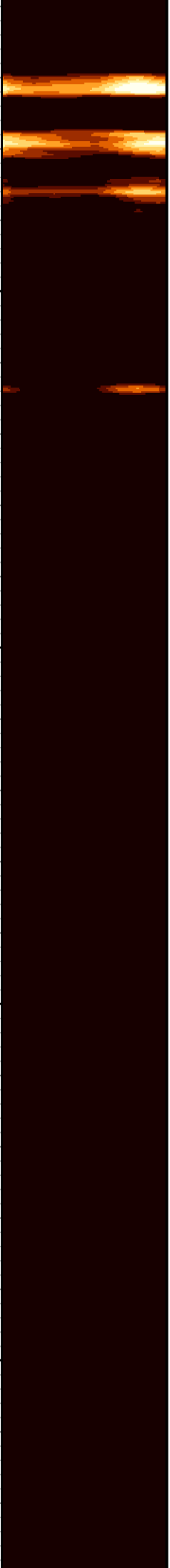


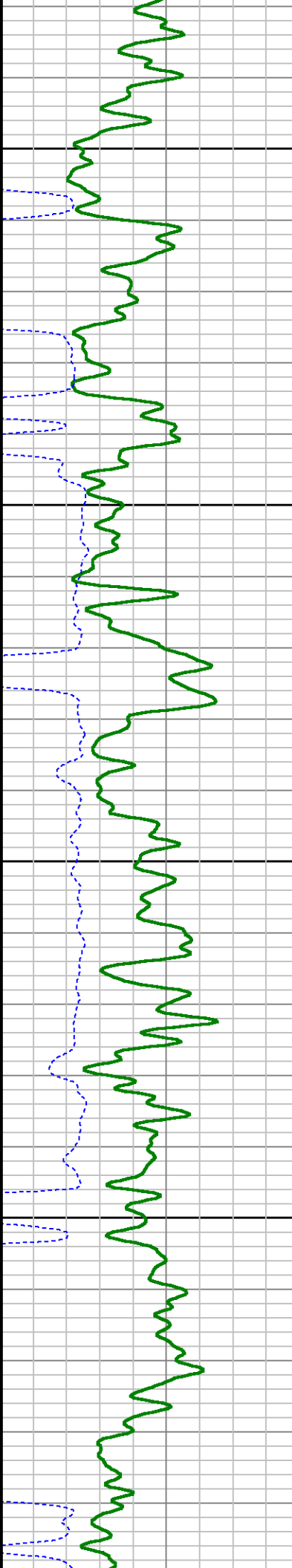
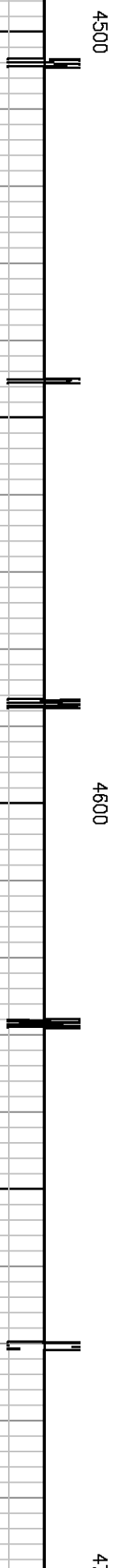
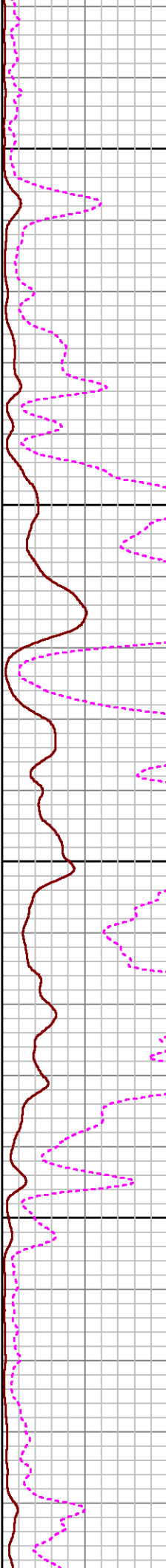
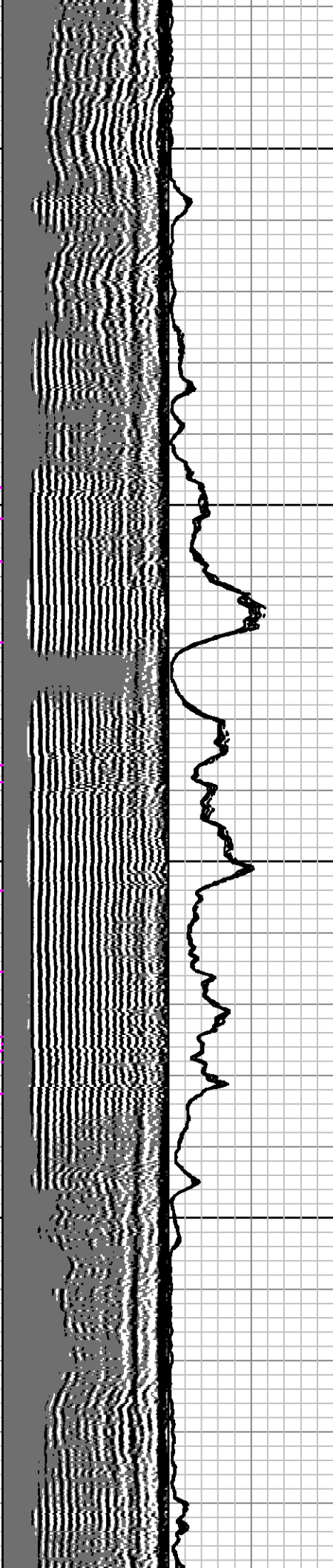
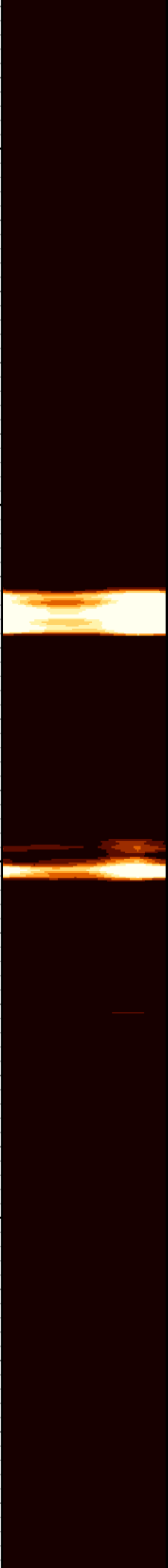


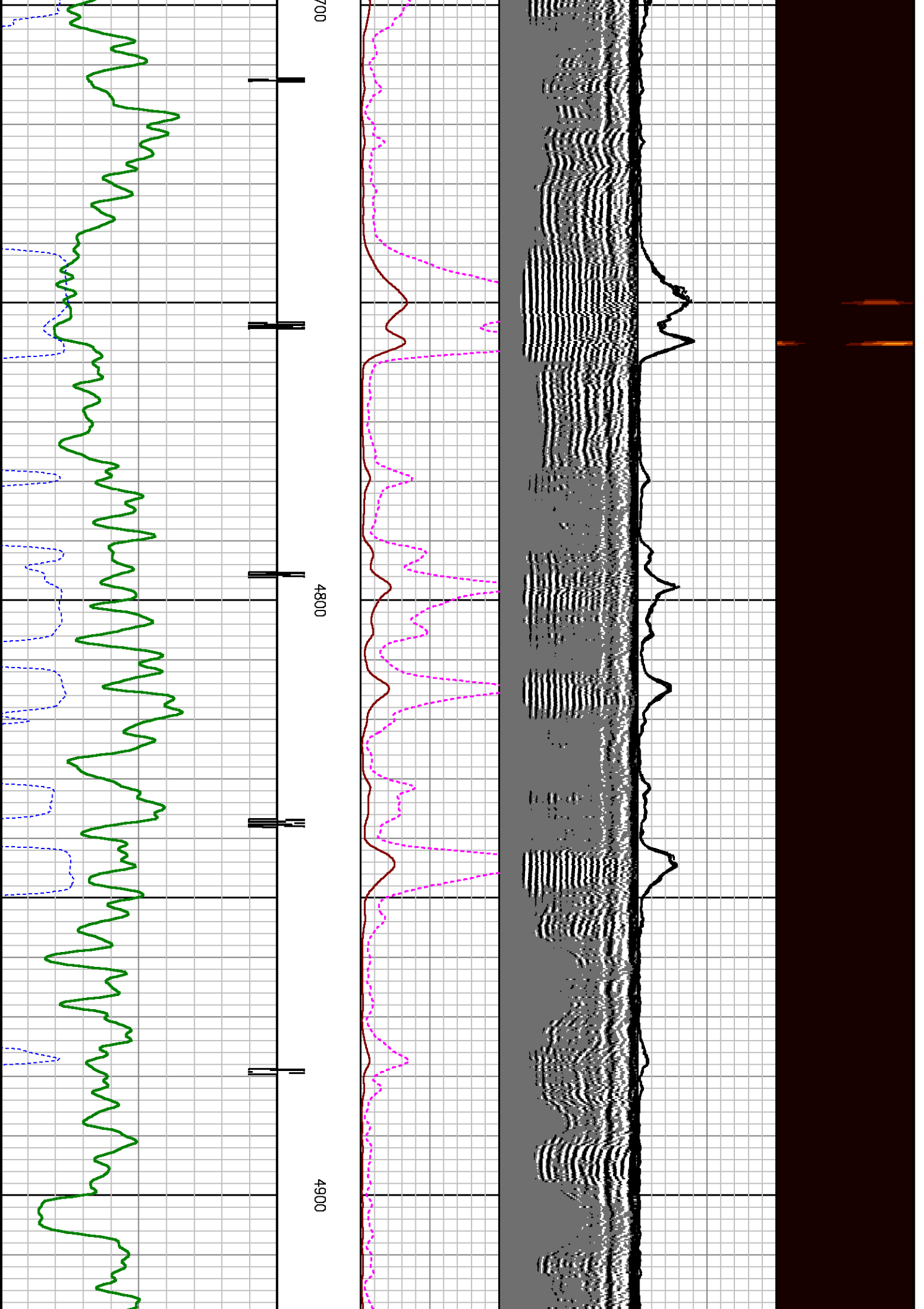


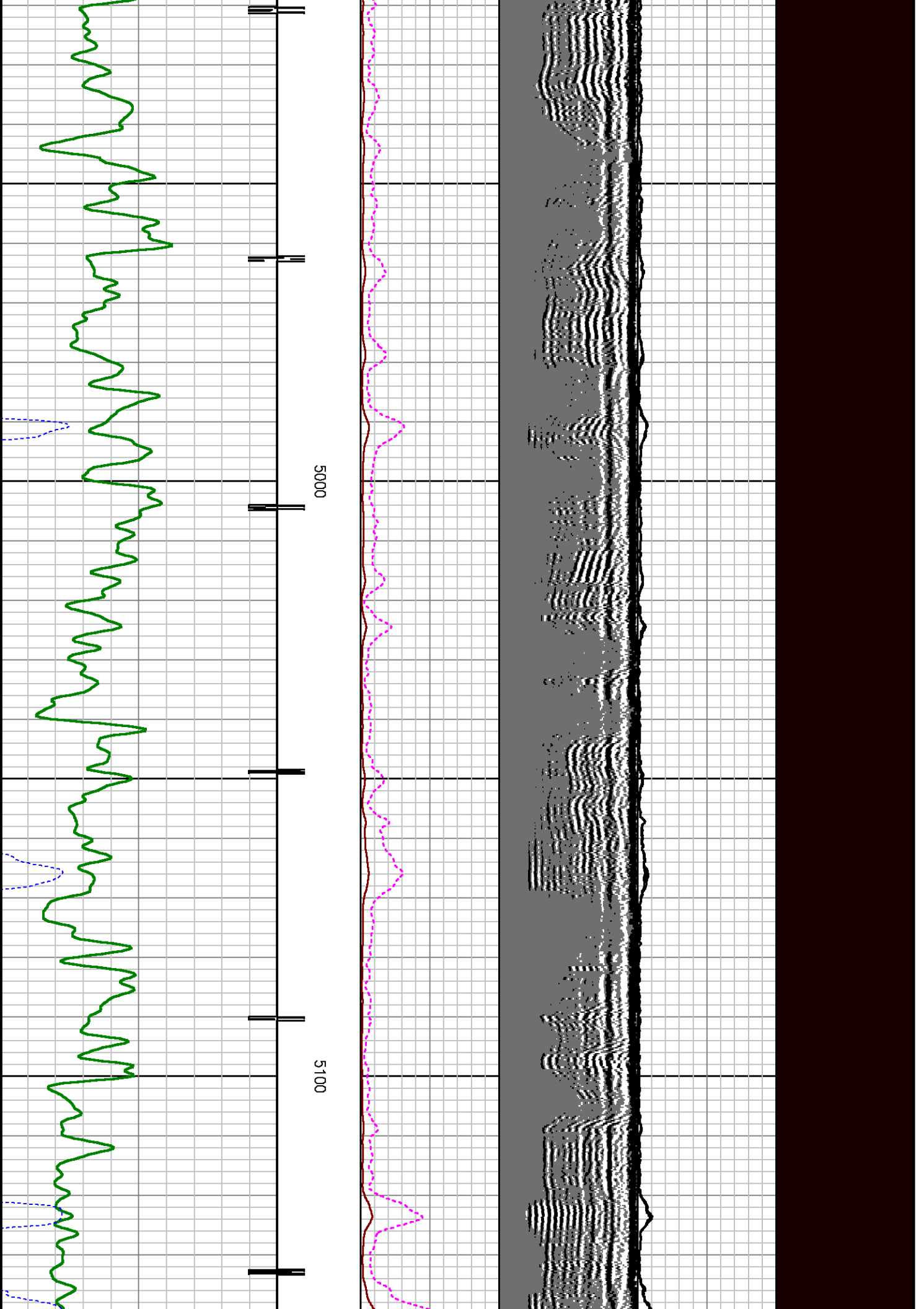


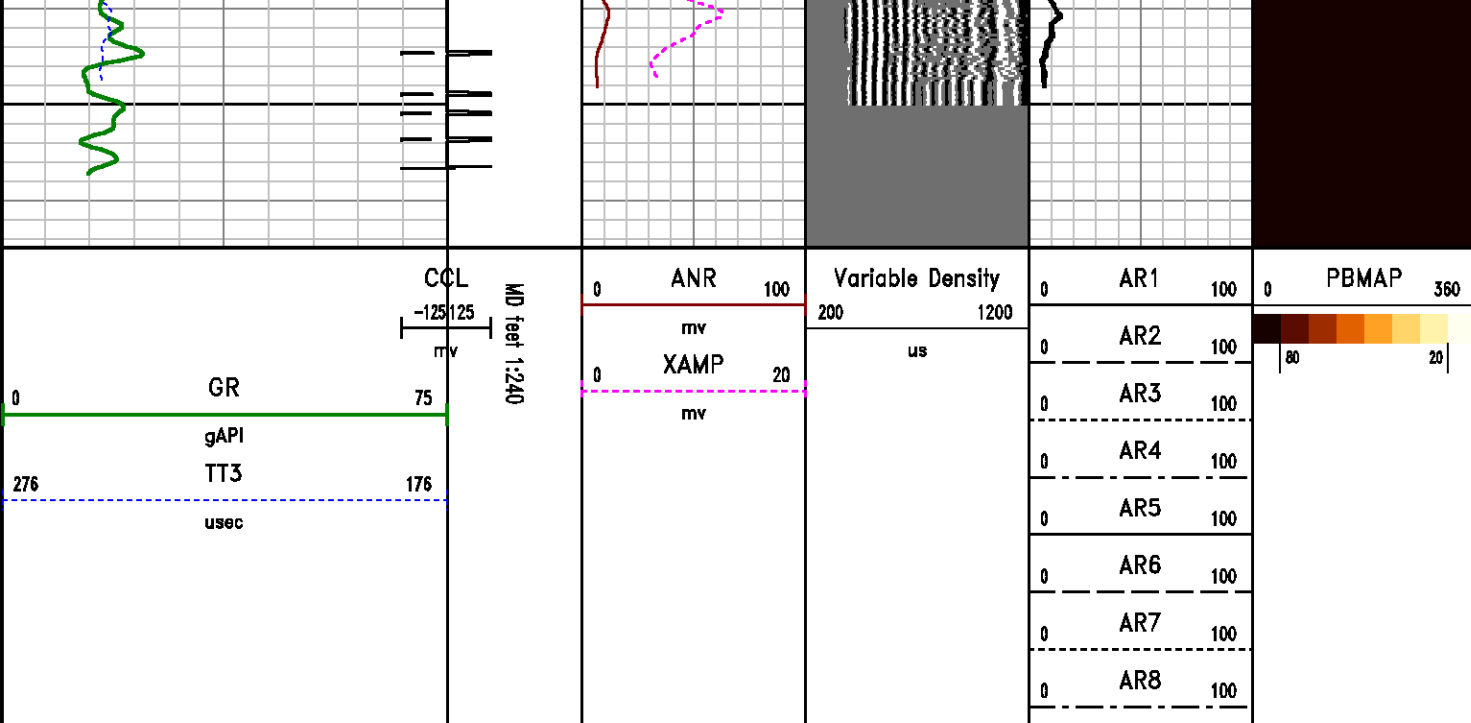












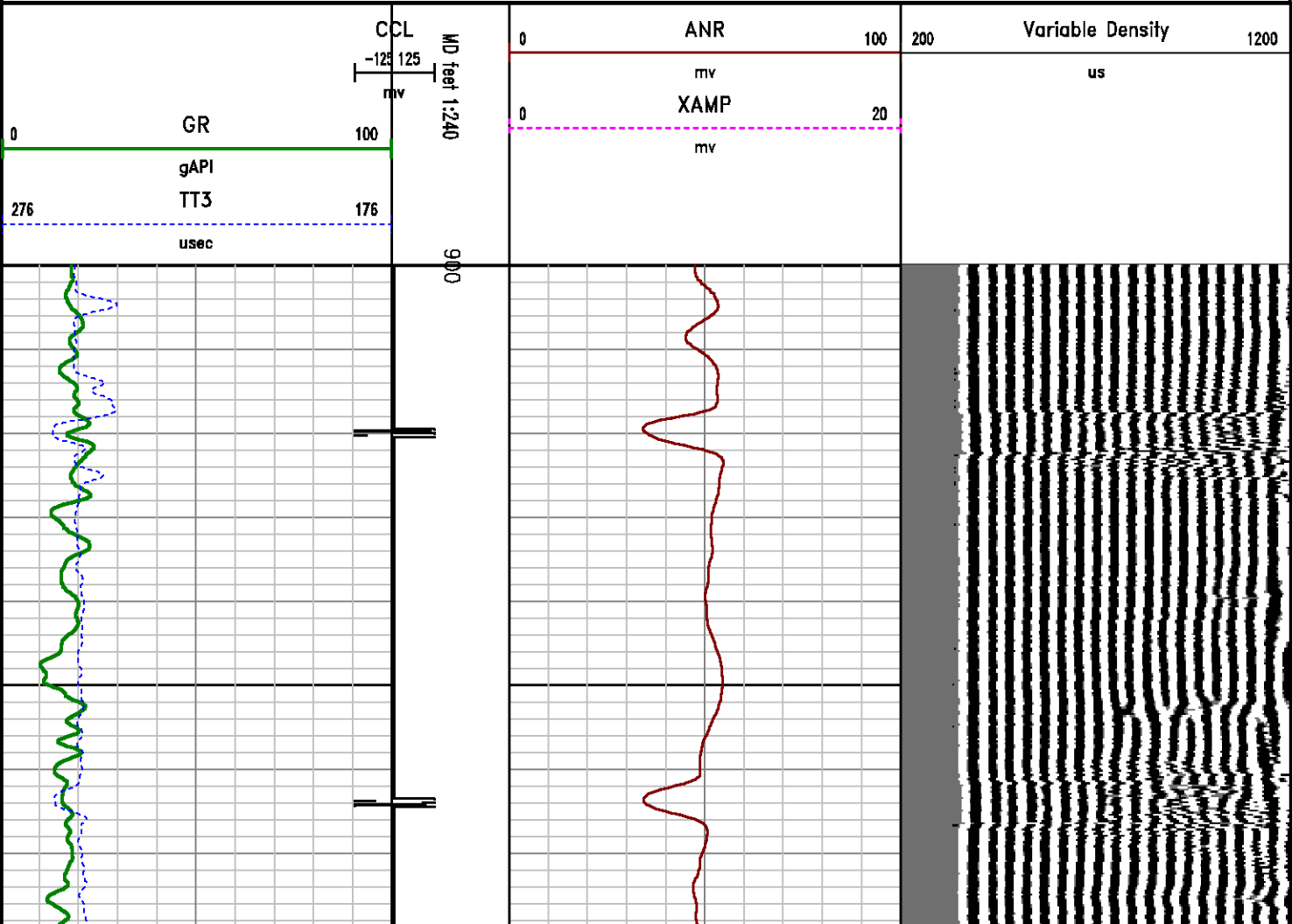
REPEAT PASS
0 PSI

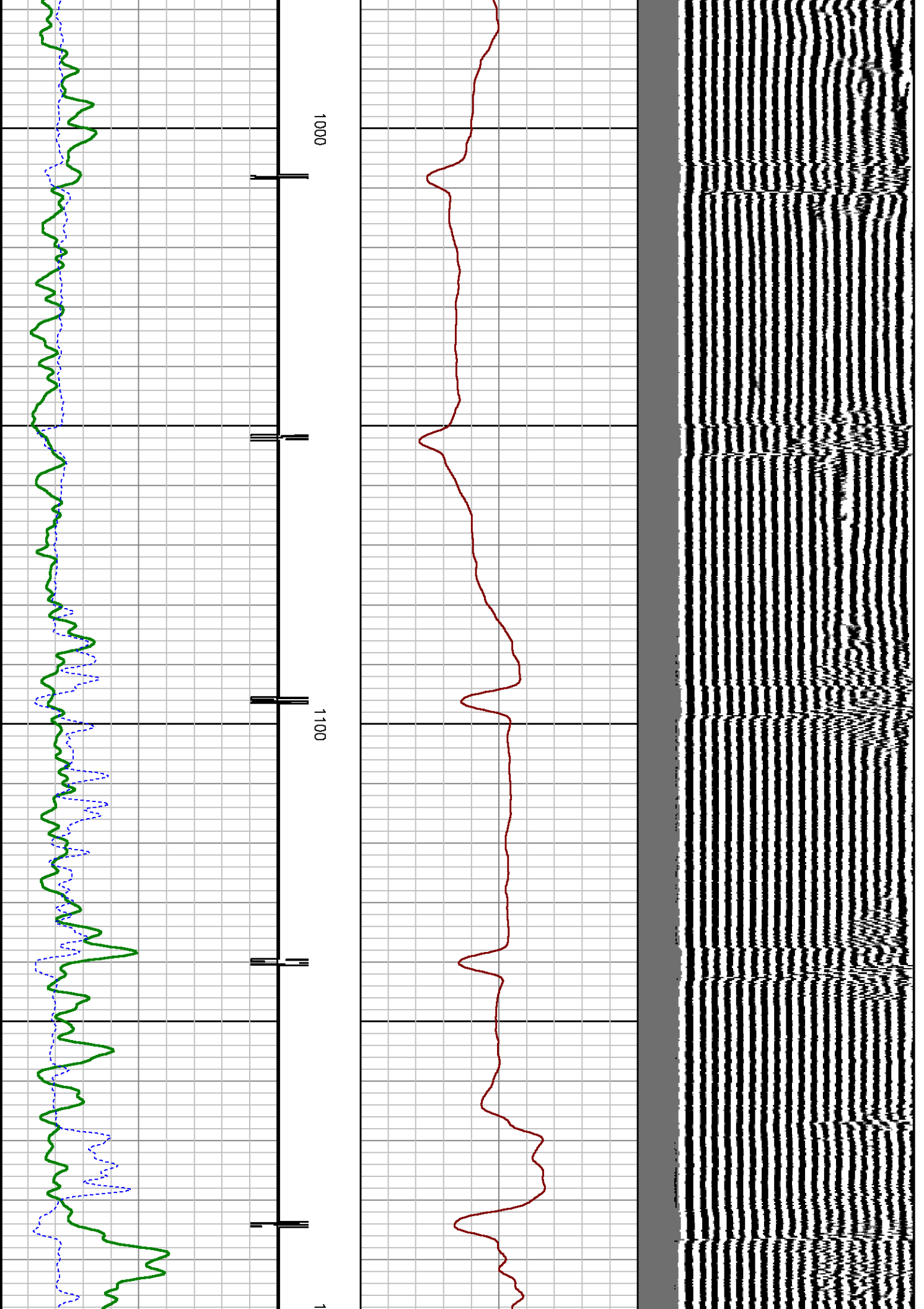
MEASUREMENT TYPE	PARAMETER	VALUE	UNITS	TOP	BOTTOM
RAL	Amp Gate Start Far	352.313	uSec	899.972	1311.000
RAL	Amp Gate Start Near	252.954	uSec	899.972	1311.000
RAL	Amp Gate Start Radial	247.316	uSec	899.972	1311.000
RAL	Amp Gate Width Far	30.658	uSec	899.972	1311.000
RAL	Amp Gate Width Near	29.759	uSec	899.972	1311.000
RAL	Amp Gate Width Radial	37.287	uSec	899.972	1311.000
RAL	casing od	4.500	inches	899.972	1311.000
RAL	casing wt	11.600	lbm/ft	899.972	1311.000
RAL	FB Start Far	268.626	uSec	899.972	1311.000
RAL	FB Start Near	175.391	uSec	899.972	1311.000
RAL	FB Start Radial	175.391	uSec	899.972	1311.000
RAL	FB Thresh Far	15.000	mv	899.972	1311.000
RAL	FB Thresh Near	4.000	mv	899.972	1311.000
RAL	FB Thresh Radial	4.000	mv	899.972	1311.000
RAL	Fluid Travel Time	200.000	uSec/ft	899.972	1310.990

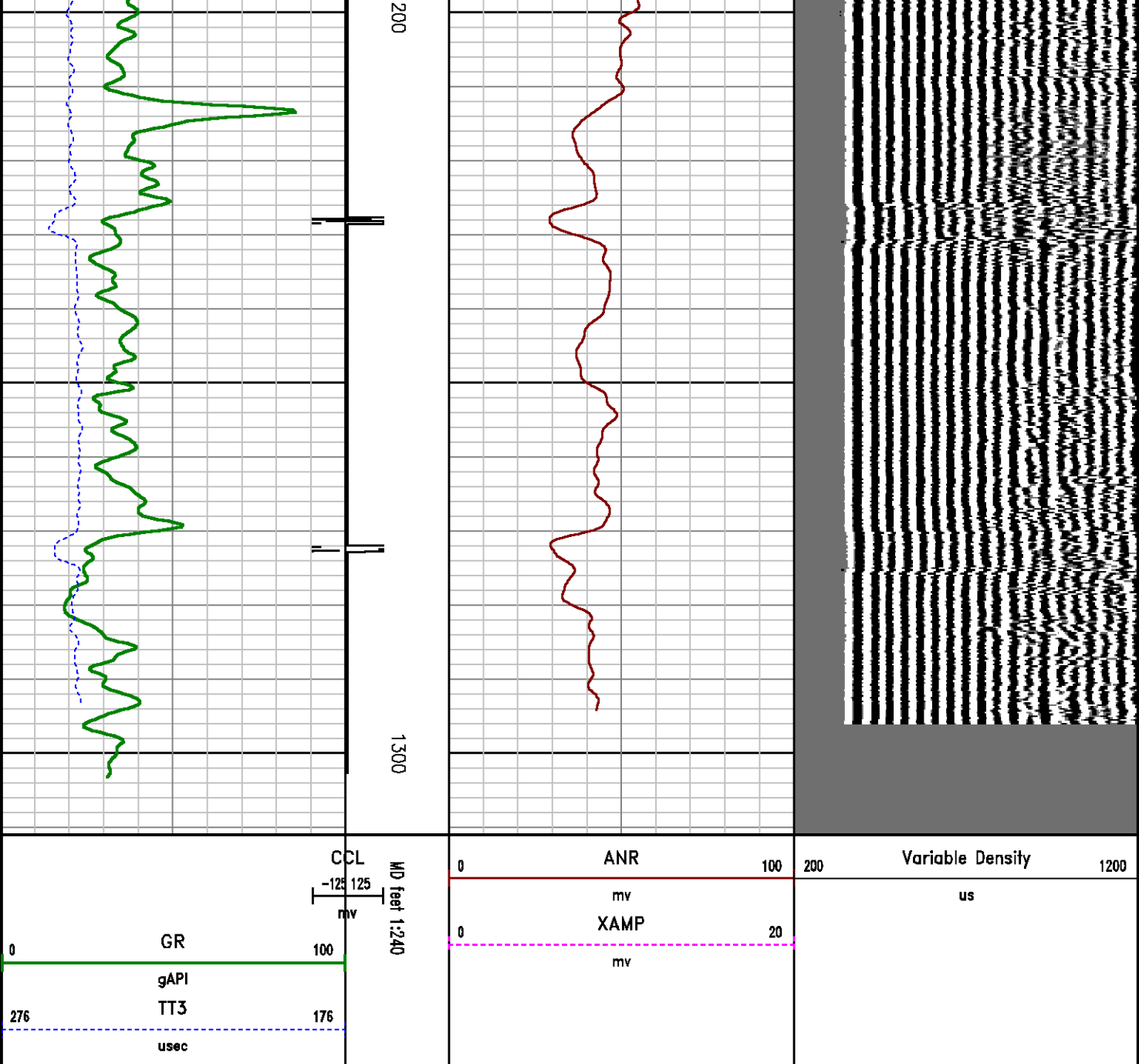
DEPTH OFFSETS
(for Acquired Curves)

SERIES	DEPTH OFFSET	ACQUIRED CURVES							
1426XA	-15.360	ACAL	ANR	AR1	AR2	AR3	AR4		
		AR5	AR6	AR7	AR8	CHV	FPR2		
		FPR3	FPR5	TT3	TTR1	TTR2	TTR3		
		TTR4	TTR5	TTR6	TTR7	TTR8	XAMP		
1426XA	-14.360	AFAR	SIG	TT5					
1426XA	-7.250	CCL							
1426XA	-5.390	GR							
1426XA	0.000	NEU							

Created by : RAL, v4.8.007
Plotted by : PlotMgr, v5.4.504
Company : WILLIAMS
Well : SG 13-25
File Name : D:\WELLDATA\WILLIAMSFINAL\B1326\REPEAT.XTF
Mode : PlotMgr 5.4.504
Interval : 900.00 - 1311.00 feet UP
Created : 8/3/2008 2:47:27 PM







CALIBRATION SUMMARY

RALSHP

Shop Calibration: C:\case\calver\RALSHP\0888808_shp.cal

SHOP CALIBRATION SUMMARY

DATE/TIME PERFORMED: Sun Aug 03 12:17:41 2008 TOOL SERIES: 1426XA ASSET: 08888 SEQ: 08

Tool Delay [usec] -38.00 Tank OD 5.50 Tank Wt 15.50 Tank ID 4.95

RECEIVER	Travel Time [usec]	Amp. Gate Start [usec]	Amp. Gate Width [usec]	Zero Gate Start [usec]	Zero Gate Width [usec]	Zero Amp. [mV]	Amp Ref. [mV]	Shop Factor
CAL Pulse	229	285	25	166	25	-0.061	100.00	1.34
3 Ft. Receiver	278	280	25	166	25	-2.194	100.00	0.32
5 Ft. Receiver	387	388	25	282	25	-0.844	150.00	0.48
Radial #1	277	280	25	166	25	-0.506	100.00	0.30
Radial #2	277	280	25	166	25	-2.556	100.00	0.29
Radial #3	277	280	25	166	25	-1.711	100.00	0.29
Radial #4	277	280	25	166	25	-1.828	100.00	0.31
Radial #5	278	280	25	166	25	-1.450	100.00	0.35
Radial #6	278	280	25	166	25	-1.567	100.00	0.36
Radial #7	277	280	25	166	25	-0.889	100.00	0.35
Radial #8	278	280	25	166	25	-1.683	100.00	0.33

RALFLD

Wellsite Calibration: C:\case\calver\RALFLD\0888808 fld.cal

WELLSITE CALIBRATION SUMMARY

DATE/TIME PERFORMED: Sun Aug 03 12:19:09 2008 TOOL SERIES: 1426XA ASSET: 08888 SEQ: 08

Tool Delay [usec] -38.00 Casing OD 5.50 Casing Wt 15.50 Casing ID 4.95

RECEIVER	Zero Gate Start [usec]	Zero Gate Width [usec]	Zero Amp. [mV]	Full Amp. [mV]	Wellsite Factor	Amp. Ref [mV]
CAL Pulse	15	263	-21.910	0.000	0.82	100.000
3 Ft. Receiver	18	192	-0.589			
5 Ft. Receiver	22	297	0.145			
Radial #1	5	204	-0.105			
Radial #2	5	204	-0.630			
Radial #3	5	204	-0.459			
Radial #4	5	204	-0.478			
Radial #5	5	204	-0.447			
Radial #6	5	204	-0.471			
Radial #7	5	204	-0.337			
Radial #8	5	204	-0.415			

GAMMA RAY

Calibration File: C:\case\calver\GR\981707.cal

CALIBRATION SUMMARY

DATE/TIME PERFORMED: Sun Aug 03 12:19:09 2008 TOOL SERIES: 1426XA ASSET: 08888 SEQ: 08

DATE/TIME PERFORMED: Mon Jul 28 12:51:56 2008

TOOL SERIES:

8262XA

ASSET:

9817

SEQ:

07

Calibrator #

Background

Calibrator On

Multiplicative

Background

Calibrator On

Differential

[cps]

[cps]

[api]

[api]

[api]

gj gj

120.24

471.04

0.513

61.70

241.70

180.00

TOOL DIAGRAM

OTA SHORT CABLE HEAD

CENTRALIZER

Series	RALCENT
Mnemonic	CENT
Diameter	3.12"
Weight	20.00 lb

PROBE 2 3/4 DUAL RECEIVER RADII (1426XA)

CENTRALIZER

Series	RALCENT
Mnemonic	CENT
Diameter	3.12"
Weight	20.00 lb

Probe GR/CCL/NEU (2459XA)

CENTRALIZER

Series	RALCENT
Mnemonic	CENT
Diameter	3.12"
Weight	20.00 lb



30.00'

XMIT—20.94'

NEAR RCVR—17.85'

FAR RCVR—15.94'

CCL—11.34'

GR—9.49'

NEU—4.09'

0.00'

Total Length: 30.00'
Total Weight: Not Available
Max Diameter: 0' 3.12"



Baker Atlas



Company	WILLIAMS		File No:
Well	SG 13-26		
Field	SOUTH GRAND VALLEY		API No:
County	GARFIELD	State	COLORADO
Location		Elevations	
		KB	5049 ft
		DF	5034 ft
		GL	5034 ft
SEC	26	TWP	7S
		RGE	96W
		THANK YOU FOR USING BAKER ATLAS	