



November 21, 2011

Colorado Oil and Gas Conservation Commission
Rifle Office
707 Wapiti Court, Suite 204
Rifle, CO 81650

Ms. Linda Spry O'Rourke
Northwest Region Environmental Protection Specialist
Linda.SpryORourke@state.co.us
970-625-2497 x7

LABORATORY RESULTS FOR FOLLOW-UP TO COMPLAINT # 200310559:

J13W and N13/N13WB – Retention Ponds Soil and Water Sampling – 07/18/2011 and 07/28/2011

Ms. Linda Spry O'Rourke:

This letter has been prepared to present laboratory results for the samples collected in reference to complaint #200310559 for the J13W and the N13/N13WB well pads.

On July 18, 2011, a soil sample from the retention pond on the J13W well pad and a soil sample from each of the two retention ponds on the N13/N13WB well pads was collected for analysis of pH, sodium adsorption ration (SAR), specific conductance, benzene, toluene, ethylbenzene, xylenes (BTEX), total volatile petroleum hydrocarbons (TVPH), and total extractable petroleum hydrocarbons (TEPH). Laboratory reports reported all constituents below the COGCC's Table 910-1 standards.

On July 28, 2011, water samples were collected from each of the three retention ponds and submitted for analysis of chloride, sulfate, total dissolved solids (TDS), and BTEX. The analytical data for the water reported BTEX below the COGCC's Table 910-1.

If you have no additional questions related to the complaint, I would like to request that the complaint #200310559 be closed out in response to this submission.

Please don't hesitate to contact me if you have any questions.

Regards,

Charles H. Jensen, Jr., C.P.G., P.G.
Hydrogeologist | Special Projects
970.285.2735
charles.jensen@encana.com

Attachments

- Lab Results Summary Table
- Laboratory Reports
- Sample location maps

Encana Oil & Gas (USA) Inc.
2717 County Road 215, Suite 100
Grand Junction, CO 81635
t 970.285.2600
f 970.285.2705
www.encana.com

Soil and water data for the J13W and the N13/N13WB retention ponds

(Reference COGCC Complaint Number 200310559)

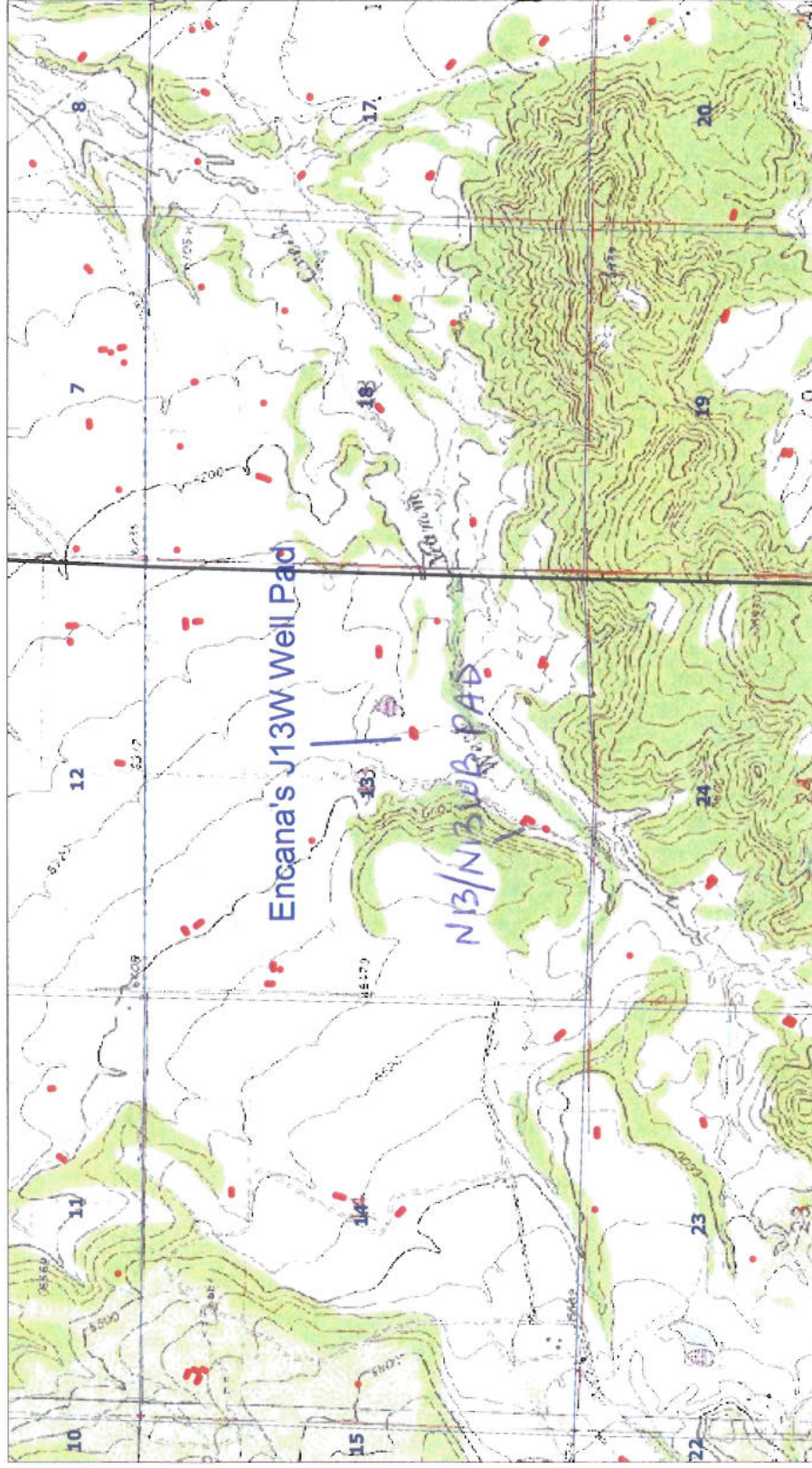
Standards		6-9	12	500	0.17	85	100	175	500
Soil Samples	Depth	pH (su)	Sodium Absorption Ratio	TPH Low (mg/kg)	Benzene (mg/kg)	Toluene (mg/kg)	Ethylbenzene (mg/kg)	Total Xylenes (mg/kg)	TPH High (mg/kg)
J13W Retention Pond 071811	3 - 6 inch	8.7	2.8	BDL	BDL	BDL	BDL	BDL	BDL
N13 N Retention Pond 071811	3 - 6 inch	8.8	3.3	BDL	BDL	BDL	BDL	BDL	BDL
N13 S Retention Pond 071811	3 - 6 inch	8.6	5.1	BDL	BDL	BDL	BDL	BDL	BDL

*Soil sample was collected at edge of retention pond

Water Sample	Date	Chloride (mg/l)	Sulfate (mg/l)	Dissolved Solids (mg/l)	Benzene (mg/l)	Toluene (mg/l)	Ethylbenzene (mg/l)	Total Xylene (mg/l)
J13-072811	07/28/2011	26.0	49.0	490	BDL	BDL	BDL	BDL
N13A-072811 (South Retention Pond)	07/28/2011	45.0	200.0	560	BDL	BDL	BDL	BDL
N13B-072811 (North Retention Pond)	07/28/2011	12.0	34.0	390	BDL	BDL	BDL	BDL

*Water sample was collected from retention pond

Topographic Location Map - J13W



SCALE 1 : 24,000



N13/N13WB Well Pad (reference complaint #200310559)



13

Retention Pond Sample Locations

SCALE 1 : 1,369



J13W Well Pad (reference complaint #200310559)



Soil and Water Sample Location Map

13

Retention Pond

SCALE 1 : 1,206





12065 Lebanon Rd.
Mt. Juliet, TN 37122
(615) 758-5858
1-800-767-5859
Fax (615) 758-5859

Tax I.D. 62-0814289

Est. 1970

Charlie Jensen
EnCana Oil & Gas Inc. - CO
2717 County Road 215, Suite 100
Parachute, CO 81635

Report Summary

Monday July 25, 2011

Report Number: L526755

Samples Received: 07/19/11

Client Project:

Description: N13, N13WB

The analytical results in this report are based upon information supplied by you, the client, and are for your exclusive use. If you have any questions regarding this data package, please do not hesitate to call.

Entire Report Reviewed By:

Daphne Richards , ESC Representative

Laboratory Certification Numbers

A2LA - 1461-01, AIHA - 100789, AL - 40660, CA - I-2327, CT - PH-0197, FL - E87487
GA - 923, IN - C-TN-01, KY - 90010, KYUST - 0016, NC - ENV375/DW21704, ND - R-140
NJ - TN002, NJ NELAP - TN002, SC - 84004, TN - 2006, VA - 00109, WV - 233
AZ - 0612, MN - 047-999-395, NY - 11742, WI - 998093910, NV - TN000032008A,
TX - T104704245, OK-9915

Accreditation is only applicable to the test methods specified on each scope of accreditation held by ESC Lab Sciences.

Note: The use of the preparatory EPA Method 3511 is not approved or endorsed by the CA ELAP.

This report may not be reproduced, except in full, without written approval from ESC Lab Sciences. Where applicable, sampling conducted by ESC is performed per guidance provided in laboratory standard operating procedures: 060302, 060303, and 060304.



YOUR LAB OF CHOICE

12065 Lebanon Rd.
 Mt. Juliet, TN 37122
 (615) 758-5858
 1-800-767-5859
 Fax (615) 758-5859

Tax I.D. 62-0814289

Est. 1970

REPORT OF ANALYSIS

July 25, 2011

Charlie Jensen
 EnCana Oil & Gas Inc. - CO
 2717 County Road 215, Suite 100
 Parachute, CO 81635

ESC Sample # : L526755-01

Date Received : July 19, 2011
 Description : N13, N13WB

Site ID :

Sample ID : N 13 N. RETENTION POND 071811

Project # :

Collected By : C. Jensen
 Collection Date : 07/18/11 13:30

Parameter	Result	Det. Limit	Units	Method	Date	Dil.
pH	8.8		su	9045D	07/23/11	1
Sodium Adsorption Ratio	3.3			Calc.	07/22/11	1
TPH (GC/FID) Low Fraction	BDL	0.50	mg/kg	8015D/GRO	07/20/11	5
Surrogate Recovery (70-130)						
a,a,a-Trifluorotoluene (FID)	98.5		% Rec.	602/8015	07/20/11	5
Benzene	BDL	0.0050	mg/kg	8260B	07/20/11	5
Toluene	BDL	0.025	mg/kg	8260B	07/20/11	5
Ethylbenzene	BDL	0.0050	mg/kg	8260B	07/20/11	5
Total Xylenes	BDL	0.015	mg/kg	8260B	07/20/11	5
Surrogate Recovery						
Toluene-d8	96.3		% Rec.	8260B	07/20/11	5
Dibromofluoromethane	98.6		% Rec.	8260B	07/20/11	5
a,a,a-Trifluorotoluene	102.		% Rec.	8260B	07/20/11	5
4-Bromofluorobenzene	105.		% Rec.	8260B	07/20/11	5
TPH (GC/FID) High Fraction	BDL	16.	mg/kg	3546/DRO	07/24/11	4
Surrogate recovery(%)						
o-Terphenyl	69.3		% Rec.	3546/DRO	07/24/11	4

BDL - Below Detection Limit

Det. Limit - Practical Quantitation Limit (PQL)

Note:

The reported analytical results relate only to the sample submitted.

This report shall not be reproduced, except in full, without the written approval from ESC.

Reported: 07/25/11 16:10 Printed: 07/25/11 16:11
 L526755-01 (DRO) - Dilution due to sample volume
 L526755-01 (PH) - 8.8@21.7c



YOUR LAB OF CHOICE

12065 Lebanon Rd.
 Mt. Juliet, TN 37122
 (615) 758-5858
 1-800-767-5859
 Fax (615) 758-5859

Tax I.D. 62-0814289

Est. 1970

REPORT OF ANALYSIS

Charlie Jensen
 EnCana Oil & Gas Inc. - CO
 2717 County Road 215, Suite 100
 Parachute, CO 81635

July 25, 2011

Date Received : July 19, 2011
 Description : N13, N13WB
 Sample ID : N13 S. RETENTION POND 071811
 Collected By : C. Jensen
 Collection Date : 07/18/11 13:35

ESC Sample # : L526755-02

Site ID :

Project # :

Parameter	Result	Det. Limit	Units	Method	Date	Dil.
pH	8.6		su	9045D	07/23/11	1
Sodium Adsorption Ratio	5.1			Calc.	07/22/11	1
TPH (GC/FID) Low Fraction	BDL	0.50	mg/kg	8015D/GRO	07/20/11	5
Surrogate Recovery (70-130) a,a,a-Trifluorotoluene (FID)	99.7		% Rec.	602/8015	07/20/11	5
Benzene	BDL	0.0050	mg/kg	8260B	07/20/11	5
Toluene	BDL	0.025	mg/kg	8260B	07/20/11	5
Ethylbenzene	BDL	0.0050	mg/kg	8260B	07/20/11	5
Total Xylenes	BDL	0.015	mg/kg	8260B	07/20/11	5
Surrogate Recovery						
Toluene-d8	95.4		% Rec.	8260B	07/20/11	5
Dibromofluoromethane	98.8		% Rec.	8260B	07/20/11	5
a,a,a-Trifluorotoluene	102.		% Rec.	8260B	07/20/11	5
4-Bromofluorobenzene	102.		% Rec.	8260B	07/20/11	5
TPH (GC/FID) High Fraction	BDL	4.0	mg/kg	3546/DRO	07/20/11	1
Surrogate recovery(%) o-Terphenyl	54.4		% Rec.	3546/DRO	07/20/11	1

BDL - Below Detection Limit
 Det. Limit - Practical Quantitation Limit (PQL)

Note:

The reported analytical results relate only to the sample submitted.

This report shall not be reproduced, except in full, without the written approval from ESC.

Reported: 07/25/11 16:10 Printed: 07/25/11 16:11
 L526755-02 (PH) - 8.6@21.6c

Attachment A
List of Analytes with QC Qualifiers

Sample Number	Work Group	Sample Type	Analyte	Run ID	Qualifier
L526755-01	WG546997	SAMP	pH	R1780210	J3

Attachment B
Explanation of QC Qualifier Codes

Qualifier	Meaning
J3	The associated batch QC was outside the established quality control range for precision.

Qualifier Report Information

ESC utilizes sample and result qualifiers as set forth by the EPA Contract Laboratory Program and as required by most certifying bodies including NELAC. In addition to the EPA qualifiers adopted by ESC, we have implemented ESC qualifiers to provide more information pertaining to our analytical results. Each qualifier is designated in the qualifier explanation as either EPA or ESC. Data qualifiers are intended to provide the ESC client with more detailed information concerning the potential bias of reported data. Because of the wide range of constituents and variety of matrices incorporated by most EPA methods, it is common for some compounds to fall outside of established ranges. These exceptions are evaluated and all reported data is valid and useable "unless qualified as 'R' (Rejected)."

Definitions

- Accuracy - The relationship of the observed value of a known sample to the true value of a known sample. Represented by percent recovery and relevant to samples such as: control samples, matrix spike recoveries, surrogate recoveries, etc.
- Precision - The agreement between a set of samples or between duplicate samples. Relates to how close together the results are and is represented by Relative Percent Difference.
- Surrogate - Organic compounds that are similar in chemical composition, extraction, and chromatography to analytes of interest. The surrogates are used to determine the probable response of the group of analytes that are chemically related to the surrogate compound. Surrogates are added to the sample and carried through all stages of preparation and analyses.
- TIC - Tentatively Identified Compound: Compounds detected in samples that are not target compounds, internal standards, system monitoring compounds, or surrogates.

Summary of Remarks For Samples Printed
07/25/11 at 16:11:05

TSR Signing Reports: 358
R5 - Desired TAT

If COC says TPH, then please log for GRO and DRO.

Sample: L526755-01 Account: ENCANACO Received: 07/19/11 09:00 Due Date: 07/26/11 00:00 RPT Date: 07/25/11 16:10

Sample: L526755-02 Account: ENCANACO Received: 07/19/11 09:00 Due Date: 07/26/11 00:00 RPT Date: 07/25/11 16:10



YOUR LAB OF CHOICE

EnCana Oil & Gas Inc. - CO
 Charlie Jensen
 2717 County Road 215, Suite 100
 Parachute, CO 81635

Quality Assurance Report
 Level II
 L526755

12065 Lebanon Rd.
 Mt. Juliet, TN 37122
 (615) 758-5858
 1-800-767-5859
 Fax (615) 758-5859

Tax I.D. 62-0814289

Est. 1970

July 25, 2011

Analyte	Result	Laboratory Blank		Limit	Batch	Date Analyzed
		Units	% Rec			
TPH (GC/FID) High Fraction	< 4	ppm			WG546407	07/20/11 14:04
o-Terphenyl		% Rec.	69.52	50-150	WG546407	07/20/11 14:04
Benzene	< .001	mg/kg			WG546404	07/20/11 09:10
Ethylbenzene	< .001	mg/kg			WG546404	07/20/11 09:10
Toluene	< .005	mg/kg			WG546404	07/20/11 09:10
Total Xylenes	< .003	mg/kg			WG546404	07/20/11 09:10
4-Bromofluorobenzene		% Rec.	103.1	59-140	WG546404	07/20/11 09:10
Dibromofluoromethane		% Rec.	97.78	63-139	WG546404	07/20/11 09:10
Toluene-d8		% Rec.	95.74	84-116	WG546404	07/20/11 09:10
a, a, a-Trifluorotoluene		% Rec.	102.0	80-118	WG546404	07/20/11 09:10
TPH (GC/FID) Low Fraction	< .1	mg/kg			WG546472	07/20/11 17:43
a, a, a-Trifluorotoluene (FID)		% Rec.	99.21	59-128	WG546472	07/20/11 17:43
pH	4.20	su			WG546997	07/23/11 16:30
TPH (GC/FID) High Fraction	< 4	ppm			WG547055	07/24/11 06:04
o-Terphenyl		% Rec.	71.14	50-150	WG547055	07/24/11 06:04

Analyte	Units	Duplicate			Limit	Ref Samp	Batch
		Result	Duplicate	RPD			
pH	su	8.70	8.80	1.14*	1	L526755-01	WG546997
pH	su	8.40	8.40	0	1	L527324-01	WG546997

Analyte	Units	Laboratory Control Sample		% Rec	Limit	Batch
		Known Val	Result			
TPH (GC/FID) High Fraction	ppm	60	49.2	82.0	50-150	WG546407
o-Terphenyl				69.06	50-150	WG546407
Benzene	mg/kg	.025	0.0253	101.	65-128	WG546404
Ethylbenzene	mg/kg	.025	0.0250	100.	74-128	WG546404
Toluene	mg/kg	.025	0.0236	94.5	70-120	WG546404
Total Xylenes	mg/kg	.075	0.0734	97.8	74-127	WG546404
4-Bromofluorobenzene				98.32	59-140	WG546404
Dibromofluoromethane				101.5	63-139	WG546404
Toluene-d8				97.92	84-116	WG546404
a, a, a-Trifluorotoluene				102.0	80-118	WG546404
TPH (GC/FID) Low Fraction	mg/kg	5.5	4.62	84.0	67-135	WG546472
a, a, a-Trifluorotoluene (FID)				105.2	59-128	WG546472
pH	su	6.3	6.30	100.	97.98-102.02	WG546997
TPH (GC/FID) High Fraction	ppm	60	50.1	83.5	50-150	WG547055
o-Terphenyl				68.47	50-150	WG547055

* Performance of this Analyte is outside of established criteria.
 For additional information, please see Attachment A 'List of Analytes with QC Qualifiers.'



YOUR LAB OF CHOICE

EnCana Oil & Gas Inc. - CO
 Charlie Jensen
 2717 County Road 215, Suite 100
 Parachute, CO 81635

Quality Assurance Report
 Level II
 L526755

12065 Lebanon Rd.
 Mt. Juliet, TN 37122
 (615) 758-5858
 1-800-767-5859
 Fax (615) 758-5859

Tax I.D. 62-0814289

Est. 1970

July 25, 2011

Analyte	Units	Laboratory Control Sample Duplicate			Limit	RPD	Limit	Batch
		Result	Ref	%Rec				
TPH (GC/FID) High Fraction	ppm	43.7	49.2	73.0	50-150	11.9	25	WG546407
o-Terphenyl				58.95	50-150			WG546407
Benzene	mg/kg	0.0257	0.0253	103.	65-128	1.71	20	WG546404
Ethylbenzene	mg/kg	0.0261	0.0250	104.	74-128	4.42	20	WG546404
Toluene	mg/kg	0.0250	0.0236	100.	70-120	5.48	20	WG546404
Total Xylenes	mg/kg	0.0778	0.0734	104.	74-127	5.90	20	WG546404
4-Bromofluorobenzene				100.5	59-140			WG546404
Dibromofluoromethane				100.7	63-139			WG546404
Toluene-d8				101.1	84-116			WG546404
a,a,a-Trifluorotoluene				104.0	80-118			WG546404
TPH (GC/FID) Low Fraction	mg/kg	4.78	4.62	87.0	67-135	3.32	20	WG546472
a,a,a-Trifluorotoluene (FID)				104.0	59-128			WG546472
pH	su	6.30	6.30	100.	97.98-102.02	0	20	WG546997
TPH (GC/FID) High Fraction	ppm	50.8	50.1	85.0	50-150	1.50	25	WG547055
o-Terphenyl				65.45	50-150			WG547055

Analyte	Units	Matrix Spike				Limit	Ref Samp	Batch
		MS Res	Ref Res	TV	% Rec			
Benzene	mg/kg	0.992	0	.025	100.	16-143	L526731-03	WG546404
Ethylbenzene	mg/kg	1.01	0	.025	103.	12-137	L526731-03	WG546404
Toluene	mg/kg	0.929	0	.025	94.1	12-136	L526731-03	WG546404
Total Xylenes	mg/kg	3.01	0	.075	102.	10-138	L526731-03	WG546404
4-Bromofluorobenzene					97.60	59-140		WG546404
Dibromofluoromethane					100.4	63-139		WG546404
Toluene-d8					98.09	84-116		WG546404
a,a,a-Trifluorotoluene					102.8	80-118		WG546404
TPH (GC/FID) Low Fraction	mg/kg	17.9	0	5.5	65.0	55-109	L526755-01	WG546472
a,a,a-Trifluorotoluene (FID)					102.0	59-128		WG546472

Analyte	Units	Matrix Spike Duplicate			Limit	RPD	Limit	Ref Samp	Batch
		MSD	Ref	%Rec					
Benzene	mg/kg	0.970	0.992	98.3	16-143	2.19	31	L526731-03	WG546404
Ethylbenzene	mg/kg	1.03	1.01	104.	12-137	1.64	36	L526731-03	WG546404
Toluene	mg/kg	0.948	0.929	96.0	12-136	2.07	32	L526731-03	WG546404
Total Xylenes	mg/kg	3.05	3.01	103.	10-138	1.25	36	L526731-03	WG546404
4-Bromofluorobenzene				101.7	59-140			WG546404	
Dibromofluoromethane				96.91	63-139			WG546404	
Toluene-d8				98.37	84-116			WG546404	
a,a,a-Trifluorotoluene				103.8	80-118			WG546404	
TPH (GC/FID) Low Fraction	mg/kg	18.5	17.9	67.1	55-109	3.12	20	L526755-01	WG546472
a,a,a-Trifluorotoluene (FID)				102.0	59-128			WG546472	

Batch number / Run number / Sample number cross reference

WG546407: R1773470: L526755-02

* Performance of this Analyte is outside of established criteria.

For additional information, please see Attachment A 'List of Analytes with QC Qualifiers.'



EnCana Oil & Gas Inc. - CO
Charlie Jensen
2717 County Road 215, Suite 100
Parachute, CO 81635

Quality Assurance Report
Level II
L526755

12065 Lebanon Rd.
Mt. Juliet, TN 37122
(615) 758-5858
1-800-767-5859
Fax (615) 758-5859

Tax I.D. 62-0814289

Est. 1970

July 25, 2011

WG546404: R1773930: L526755-01 02
WG546472: R1774470: L526755-01 02
WG546584: R1777690: L526755-01 02
WG546997: R1780210: L526755-01 02
WG547055: R1781970: L526755-01

* * Calculations are performed prior to rounding of reported values.
* Performance of this Analyte is outside of established criteria.
For additional information, please see Attachment A 'List of Analytes with QC Qualifiers.'



YOUR LAB OF CHOICE

EnCana Oil & Gas Inc. - CO
Charlie Jensen
2717 County Road 215, Suite 100
Parachute, CO 81635

Quality Assurance Report
Level II
L526755

12065 Lebanon Rd.
Mt. Juliet, TN 37122
(615) 758-5858
1-800-767-5859
Fax (615) 758-5859

Tax I.D. 62-0814289

Est. 1970

July 25, 2011

The data package includes a summary of the analytic results of the quality control samples required by the SW-846 or CWA methods. The quality control samples include a method blank, a laboratory control sample, and the matrix spike/matrix spike duplicate analysis. If a target parameter is outside the method limits, every sample that is effected is flagged with the appropriate qualifier in Appendix B of the analytic report.

Method Blank - an aliquot of reagent water carried through the entire analytic process. The method blank results indicate if any possible contamination exposure during the sample handling, digestion or extraction process, and analysis. Concentrations of target analytes above the reporting limit in the method blank are qualified with the "B" qualifier.

Laboratory Control Sample - is a sample of known concentration that is carried through the digestion/extraction and analysis process. The percent recovery, expressed as a percentage of the theoretical concentration, has statistical control limits indicating that the analytic process is "in control". If a target analyte is outside the control limits for the laboratory control sample or any other control sample, the parameter is flagged with a "J4" qualifier for all effected samples.

Matrix Spike and Matrix Spike Duplicate - is two aliquots of an environmental sample that is spiked with known concentrations of target analytes. The percent recovery of the target analytes also has statistical control limits. If any recoveries that are outside the method control limits, the sample that was selected for matrix spike/matrix spike duplicate analysis is flagged with either a "J5" or a "J6". The relative percent difference (%RPD) between the matrix spike and the matrix spike duplicate recoveries is all calculated. If the RPD is above the method limit, the effected samples are flagged with a "J3" qualifier.

Encana
 2717 Co. Rd. 215
 Parachute, CO 81635

Alternate billing information:

Report to: Charlie Jensen
 Email to: charles.jensen@encana.com
 City/State Collected: Parachute, CO
 ESC Key: ENCANACO
 P.O.#:

Project Description: **N13, N13WB**
 Client Project #: **ENCANACO**
 Phone: 970.285.2735
 Collected by: C. Jensen
 Site/Facility ID#:

Collected by (signature): *Charlie Jensen*
 Packed on Tue N Y X
 (Lab MUST Be Notified)
 Same Day.....200%
 Next Day.....100%
 Two Day.....50%
 Three Day.....25%
 Date Results Needed:
 Email? No Yes
 FAX? No Yes

Sample ID: **N13 N. Retention Pond**
 7.18.11
 Matrix: **soil**
 Date: **7/18/11 1:30**
 No. of Cntrs: **1**

Sample ID: **N13 S. Retention Pond**
 7.18.11
 Matrix: **soil**
 Date: **7/18/11 1:35**
 No. of Cntrs: **1**

Chain of Custody Page **1** of **1**
 Prepared by: **ENVIRONMENTAL SCIENCE CORP.**
 12065 Lebanon Road
 Mt. Juliet, TN 37122
 Phone (615) 758-5858
 Phone (800) 767-5859
 FAX (615) 758-5859
B157

CoCode **ENCANACO** (lab use only)
 Template/Prelogin
 Shipped Via:

Remarks/Contaminant	Sample # (lab only)
	1526755 -01
	-02

Analysis/Container/Preservative			
BTEX (8260)	X		
TPH (8015 m) (TPH, TERP)	X	X SAR	X PM

*Matrix: **SS - Soil/Solid** GW - Groundwater WW - WasteWater DW - Drinking Water OT - Other
 pH _____ Temp _____
 Flow _____ Other _____

Relinquished by: (Signature) <i>Charlie Jensen</i>	Date: 7/18/11 Time: 3:00	Received by: (Signature) <i>[Signature]</i>	Date: _____ Time: _____	Samples returned via: <input type="checkbox"/> UPS <input type="checkbox"/> Courier	Condition: (lab use only) OK
Relinquished by: (Signature)	Date: _____ Time: _____	Received by: (Signature)	Date: _____ Time: _____	Temp: 4.1 Bottles Received: 2-500	
Relinquished by: (Signature)	Date: _____ Time: _____	Received for lab by: (Signature) <i>[Signature]</i>	Date: 07-19-11 Time: 0940	pH Checked: _____	NCF: _____

7949 8197 9948



12065 Lebanon Rd.
Mt. Juliet, TN 37122
(615) 758-5858
1-800-767-5859
Fax (615) 758-5859

Tax I.D. 62-0814289

Est. 1970

Charlie Jensen
EnCana Oil & Gas Inc. - CO
2717 County Road 215, Suite 100
Parachute, CO 81635

Report Summary

Friday July 22, 2011

Report Number: L526759

Samples Received: 07/19/11

Client Project:

Description: J13W Retention Pond

The analytical results in this report are based upon information supplied by you, the client, and are for your exclusive use. If you have any questions regarding this data package, please do not hesitate to call.

Entire Report Reviewed By:

Jared Willis, ESC Representative

Laboratory Certification Numbers

A2LA - 1461-01, AIHA - 100789, AL - 40660, CA - I-2327, CT - PH-0197, FL - E87487
GA - 923, IN - C-TN-01, KY - 90010, KYUST - 0016, NC - ENV375/DW21704, ND - R-140
NJ - TN002, NJ NELAP - TN002, SC - 84004, TN - 2006, VA - 00109, WV - 233
AZ - 0612, MN - 047-999-395, NY - 11742, WI - 998093910, NV - TN000032008A,
TX - T104704245, OK-9915

Accreditation is only applicable to the test methods specified on each scope of accreditation held by ESC Lab Sciences.

Note: The use of the preparatory EPA Method 3511 is not approved or endorsed by the CA ELAP.

This report may not be reproduced, except in full, without written approval from ESC Lab Sciences. Where applicable, sampling conducted by ESC is performed per guidance provided in laboratory standard operating procedures: 060302, 060303, and 060304.



12065 Lebanon Rd.
 Mt. Juliet, TN 37122
 (615) 758-5858
 1-800-767-5859
 Fax (615) 758-5859
 Tax I.D. 62-0814289
 Est. 1970

REPORT OF ANALYSIS

July 22, 2011

Charlie Jensen
 EnCana Oil & Gas Inc. - CO
 2717 County Road 215, Suite 100
 Parachute, CO 81635

Date Received : July 19, 2011
 Description : J13W Retention Pond
 Sample ID : J13W RETENTION POND 071811
 Collected By : C. Jensen
 Collection Date : 07/18/11 13:15

ESC Sample # : L526759-01
 Site ID :
 Project # :

Parameter	Result	Det. Limit	Units	Method	Date	Dil.
pH	8.7		su	9045D	07/21/11	1
Sodium Adsorption Ratio	2.8			Calc.	07/22/11	1
TPH (GC/FID) Low Fraction	BDL	0.50	mg/kg	8015D/GRO	07/20/11	5
Surrogate Recovery (70-130) a,a,a-Trifluorotoluene(FID)	98.3		% Rec.	602/8015	07/20/11	5
Benzene	BDL	0.0050	mg/kg	8260B	07/20/11	5
Toluene	BDL	0.025	mg/kg	8260B	07/20/11	5
Ethylbenzene	BDL	0.0050	mg/kg	8260B	07/20/11	5
Total Xylenes	BDL	0.015	mg/kg	8260B	07/20/11	5
Surrogate Recovery						
Toluene-d8	100.		% Rec.	8260B	07/20/11	5
Dibromofluoromethane	95.6		% Rec.	8260B	07/20/11	5
a,a,a-Trifluorotoluene	101.		% Rec.	8260B	07/20/11	5
4-Bromofluorobenzene	98.9		% Rec.	8260B	07/20/11	5
TPH (GC/FID) High Fraction	BDL	4.0	mg/kg	3546/DRO	07/20/11	1
Surrogate recovery(%) o-Terphenyl	50.7		% Rec.	3546/DRO	07/20/11	1

BDL - Below Detection Limit
 Det. Limit - Practical Quantitation Limit(PQL)
 Note:
 The reported analytical results relate only to the sample submitted.
 This report shall not be reproduced, except in full, without the written approval from ESC.
 Reported: 07/22/11 13:15 Printed: 07/22/11 14:21
 L526759-01 (PH) - 8.7@22.6c

Summary of Remarks For Samples Printed
07/22/11 at 14:21:31

TSR Signing Reports: 358
R5 - Desired TAT

If COC says TPH, then please log for GRO and DRO.

Sample: L526759-01 Account: ENCANACO Received: 07/19/11 09:00 Due Date: 07/26/11 00:00 RPT Date: 07/22/11 13:15



YOUR LAB OF CHOICE

EnCana Oil & Gas Inc. - CO
 Charlie Jensen
 2717 County Road 215, Suite 100
 Parachute, CO 81635

Quality Assurance Report
 Level II
 L526759

12065 Lebanon Rd.
 Mt. Juliet, TN 37122
 (615) 758-5858
 1-800-767-5859
 Fax (615) 758-5859
 Tax I.D. 62-0814289
 Est. 1970

July 22, 2011

Analyte	Result	Laboratory Blank		Limit	Batch	Date Analyzed
		Units	% Rec			
Benzene	< .001	mg/kg			WG546451	07/20/11 09:59
Ethylbenzene	< .001	mg/kg			WG546451	07/20/11 09:59
Toluene	< .005	mg/kg			WG546451	07/20/11 09:59
Total Xylenes	< .003	mg/kg			WG546451	07/20/11 09:59
4-Bromofluorobenzene		% Rec.	102.6	59-140	WG546451	07/20/11 09:59
Dibromofluoromethane		% Rec.	96.96	63-139	WG546451	07/20/11 09:59
Toluene-d8		% Rec.	100.9	84-116	WG546451	07/20/11 09:59
a,a,a-Trifluorotoluene		% Rec.	99.03	80-118	WG546451	07/20/11 09:59
TPH (GC/FID) High Fraction	< 4	ppm			WG546407	07/20/11 14:04
o-Terphenyl		% Rec.	69.52	50-150	WG546407	07/20/11 14:04
TPH (GC/FID) Low Fraction	< .1	mg/kg			WG546472	07/20/11 17:43
a,a,a-Trifluorotoluene(FID)		% Rec.	99.21	59-128	WG546472	07/20/11 17:43
pH	4.20	su			WG546523	07/21/11 13:31

Analyte	Units	Duplicate			Limit	Ref Samp	Batch
		Result	Duplicate	RPD			
pH	su	9.00	9.00	0	1	L526333-02	WG546523
pH	su	8.70	8.70	0	1	L526759-01	WG546523

Analyte	Units	Laboratory Control Sample		% Rec	Limit	Batch
		Known Val	Result			
Benzene	mg/kg	.025	0.0202	81.0	65-128	WG546451
Ethylbenzene	mg/kg	.025	0.0204	81.5	74-128	WG546451
Toluene	mg/kg	.025	0.0198	79.4	70-120	WG546451
Total Xylenes	mg/kg	.075	0.0602	80.3	74-127	WG546451
4-Bromofluorobenzene			94.74	59-140	WG546451	
Dibromofluoromethane			97.76	63-139	WG546451	
Toluene-d8			101.2	84-116	WG546451	
a,a,a-Trifluorotoluene			103.1	80-118	WG546451	
TPH (GC/FID) High Fraction	ppm	60	49.2	82.0	50-150	WG546407
o-Terphenyl			69.06	50-150	WG546407	
TPH (GC/FID) Low Fraction	mg/kg	5.5	4.62	84.0	67-135	WG546472
a,a,a-Trifluorotoluene(FID)			105.2	59-128	WG546472	
pH	su	6.3	6.30	100.	97.98-102.02	WG546523

Analyte	Units	Laboratory Control Sample Duplicate			Limit	RPD	Limit	Batch
		Result	Ref	%Rec				
Benzene	mg/kg	0.0207	0.0202	83.0	65-128	2.26	20	WG546451
Ethylbenzene	mg/kg	0.0215	0.0204	86.0	74-128	5.21	20	WG546451
Toluene	mg/kg	0.0200	0.0198	80.0	70-120	0.770	20	WG546451
Total Xylenes	mg/kg	0.0636	0.0602	85.0	74-127	5.45	20	WG546451
4-Bromofluorobenzene			100.1	59-140	WG546451			
Dibromofluoromethane			96.84	63-139	WG546451			
Toluene-d8			101.8	84-116	WG546451			

* Performance of this Analyte is outside of established criteria.
 For additional information, please see Attachment A 'List of Analytes with QC Qualifiers.'



YOUR LAB OF CHOICE

EnCana Oil & Gas Inc. - CO
 Charlie Jensen
 2717 County Road 215, Suite 100
 Parachute, CO 81635

Quality Assurance Report
 Level II

L526759

12065 Lebanon Rd.
 Mt. Juliet, TN 37122
 (615) 758-5858
 1-800-767-5859
 Fax (615) 758-5859

Tax I.D. 62-0814289

Est. 1970

July 22, 2011

Analyte	Units	Laboratory Control Sample Duplicate			Limit	RPD	Limit	Batch
		Result	Ref	%Rec				
a,a,a-Trifluorotoluene				102.0	80-118			
TPH (GC/FID) High Fraction	ppm	43.7	49.2	73.0	50-150	11.9	25	WG546407
o-Terphenyl				58.95	50-150			WG546407
TPH (GC/FID) Low Fraction	mg/kg	4.78	4.62	87.0	67-135	3.32	20	WG546472
a,a,a-Trifluorotoluene (FID)				104.0	59-128			WG546472
pH	su	6.30	6.30	100.	97.98-102.02	0	20	WG546523

Analyte	Units	MS Res	Matrix Spike Duplicate			Limit	Ref Samp	Batch
			Ref Res	TV	% Rec			
Benzene	mg/kg	0.0160	0	.025	64.1	16-143	L526300-01	WG546451
Ethylbenzene	mg/kg	0.0175	0	.025	70.0	12-137	L526300-01	WG546451
Toluene	mg/kg	0.0162	0	.025	64.9	12-136	L526300-01	WG546451
Total Xylenes	mg/kg	0.0515	0	.075	68.6	10-138	L526300-01	WG546451
4-Bromofluorobenzene					100.7	59-140		WG546451
Dibromofluoromethane					101.8	63-139		WG546451
Toluene-d8					101.8	84-116		WG546451
a,a,a-Trifluorotoluene					98.97	80-118		WG546451
TPH (GC/FID) Low Fraction	mg/kg	17.9	0	5.5	65.0	55-109	L526755-01	WG546472
a,a,a-Trifluorotoluene (FID)					102.0	59-128		WG546472

Analyte	Units	MSD	Matrix Spike Duplicate			Limit	RPD	Limit	Ref Samp	Batch
			Ref	%Rec						
Benzene	mg/kg	0.0179	0.0160	71.7	16-143	11.3	31	L526300-01	WG546451	
Ethylbenzene	mg/kg	0.0185	0.0175	73.8	12-137	5.28	36	L526300-01	WG546451	
Toluene	mg/kg	0.0177	0.0162	70.7	12-136	8.61	32	L526300-01	WG546451	
Total Xylenes	mg/kg	0.0538	0.0515	71.7	10-138	4.43	36	L526300-01	WG546451	
4-Bromofluorobenzene				98.08	59-140				WG546451	
Dibromofluoromethane				103.1	63-139				WG546451	
Toluene-d8				101.7	84-116				WG546451	
a,a,a-Trifluorotoluene				98.10	80-118				WG546451	
TPH (GC/FID) Low Fraction	mg/kg	18.5	17.9	67.1	55-109	3.12	20	L526755-01	WG546472	
a,a,a-Trifluorotoluene (FID)				102.0	59-128				WG546472	

Batch number /Run number / Sample number cross reference

WG546451: R1773390: L526759-01
 WG546407: R1773470: L526759-01
 WG546472: R1774470: L526759-01
 WG546523: R1775990: L526759-01
 WG546584: R1777690: L526759-01

* * Calculations are performed prior to rounding of reported values.
 * Performance of this Analyte is outside of established criteria.
 For additional information, please see Attachment A 'List of Analytes with QC Qualifiers.'



EnCana Oil & Gas Inc. - CO
Charlie Jensen
2717 County Road 215, Suite 100
Parachute, CO 81635

Quality Assurance Report
Level II

L526759

12065 Lebanon Rd.
Mt. Juliet, TN 37122
(615) 758-5858
1-800-767-5859
Fax (615) 758-5859

Tax I.D. 62-0814289

Est. 1970

July 22, 2011

The data package includes a summary of the analytic results of the quality control samples required by the SW-846 or CWA methods. The quality control samples include a method blank, a laboratory control sample, and the matrix spike/matrix spike duplicate analysis. If a target parameter is outside the method limits, every sample that is effected is flagged with the appropriate qualifier in Appendix B of the analytic report.

Method Blank - an aliquot of reagent water carried through the entire analytic process. The method blank results indicate if any possible contamination exposure during the sample handling, digestion or extraction process, and analysis. Concentrations of target analytes above the reporting limit in the method blank are qualified with the "B" qualifier.

Laboratory Control Sample - is a sample of known concentration that is carried through the digestion/extraction and analysis process. The percent recovery, expressed as a percentage of the theoretical concentration, has statistical control limits indicating that the analytic process is "in control". If a target analyte is outside the control limits for the laboratory control sample or any other control sample, the parameter is flagged with a "J4" qualifier for all effected samples.

Matrix Spike and Matrix Spike Duplicate - is two aliquots of an environmental sample that is spiked with known concentrations of target analytes. The percent recovery of the target analytes also has statistical control limits. If any recoveries that are outside the method control limits, the sample that was selected for matrix spike/matrix spike duplicate analysis is flagged with either a "J5" or a "J6". The relative percent difference (%RPD) between the matrix spike and the matrix spike duplicate recoveries is all calculated. If the RPD is above the method limit, the effected samples are flagged with a "J3" qualifier.



12065 Lebanon Rd.
Mt. Juliet, TN 37122
(615) 758-5858
1-800-767-5859
Fax (615) 758-5859
Tax I.D. 62-0814289
Est. 1970

Charlie Jensen
Encana
2717 Co. Rd. 215, Ste 100
Parachute, CO 81635

Report Summary

Friday August 05, 2011

Report Number: L528543

Samples Received: 07/29/11

Client Project:

Description: J13/N13 Sediment Basin Sample

The analytical results in this report are based upon information supplied by you, the client, and are for your exclusive use. If you have any questions regarding this data package, please do not hesitate to call.

Entire Report Reviewed By:


Jarred Willis, ESC Representative

Laboratory Certification Numbers

A2LA - 1461-01, AIHA - 100789, AL - 40660, CA - I-2327, CT - PH-0197, FL - E87487
GA - 923, IN - C-TN-01, KY - 90010, KYUST - 0016, NC - ENV375/DW21704, ND - R-140
NJ - TN002, NJ NELAP - TN002, SC - 84004, TN - 2006, VA - 00109, WV - 233
AZ - 0612, MN - 047-999-395, NY - 11742, WI - 998093910, NV - TN000032008A,
TX - T104704245, OK-9915

Accreditation is only applicable to the test methods specified on each scope of accreditation held by ESC Lab Sciences.

Note: The use of the preparatory EPA Method 3511 is not approved or endorsed by the CA ELAP.

This report may not be reproduced, except in full, without written approval from ESC Lab Sciences. Where applicable, sampling conducted by ESC is performed per guidance provided in laboratory standard operating procedures: 060302, 060303, and 060304.



YOUR LAB OF CHOICE

12065 Lebanon Rd.
Mt. Juliet, TN 37122
(615) 758-5858
1-800-767-5859
Fax (615) 758-5859

Tax I.D. 62-0814289

Est. 1970

REPORT OF ANALYSIS

Charlie Jensen
Encana
2717 Co. Rd. 215, Ste 100
Parachute, CO 81635

August 05, 2011

Date Received : July 29, 2011
Description : J13/N13 Sediment Basin Sample
Sample ID : N13A-072811
Collected By : Aaron Stacy
Collection Date : 07/28/11 09:45

ESC Sample # : I528543-01

Site ID :

Project # :

Parameter	Result	Det. Limit	Units	Method	Date	Dil.
Chloride	45.	1.0	mg/l	9056	08/01/11	1
Sulfate	200	25.	mg/l	9056	08/02/11	5
Dissolved Solids	560	10.	mg/l	2540C	08/05/11	1
Benzene	BDL	0.00050	mg/l	8021B	07/31/11	1
Toluene	BDL	0.00050	mg/l	8021B	07/31/11	1
Ethylbenzene	BDL	0.00050	mg/l	8021B	07/31/11	1
Total Xylene	BDL	0.0015	mg/l	8021B	07/31/11	1
Surrogate Recovery(%) a,a,a-Trifluorotoluene (PID)	102.		% Rec.	8021B	07/31/11	1

BDL - Below Detection Limit
Det. Limit - Practical Quantitation Limit (PQL)
Note:
The reported analytical results relate only to the sample submitted.
This report shall not be reproduced, except in full, without the written approval from ESC.
Reported: 08/05/11 13:19 Revised: 08/05/11 20:02



YOUR LAB OF CHOICE

12065 Lebanon Rd.
 Mt. Juliet, TN 37122
 (615) 758-5858
 1-800-767-5859
 Fax (615) 758-5859

Tax I.D. 62-0814289

Est. 1970

REPORT OF ANALYSIS

Charlie Jensen
 Encana
 2717 Co. Rd. 215, Ste 100
 Parachute, CO 81635

August 05, 2011

Date Received : July 29, 2011
 Description : J13/N13 Sediment Basin Sample
 Sample ID : N13B-072811
 Collected By : Aaron Stacy
 Collection Date : 07/28/11 10:00

ESC Sample # : L528543-02

Site ID :

Project # :

Parameter	Result	Det. Limit	Units	Method	Date	Dil.
Chloride	12.	1.0	mg/l	9056	08/01/11	1
Sulfate	34.	5.0	mg/l	9056	08/01/11	1
Dissolved Solids	390	10.	mg/l	2540C	08/05/11	1
Benzene	BDL	0.00050	mg/l	8021B	07/31/11	1
Toluene	BDL	0.00050	mg/l	8021B	07/31/11	1
Ethylbenzene	BDL	0.00050	mg/l	8021B	07/31/11	1
Total Xylene	BDL	0.0015	mg/l	8021B	07/31/11	1
Surrogate Recovery (%) a,a,a-Trifluorotoluene (PID)	103.		% Rec.	8021B	07/31/11	1

BDL - Below Detection Limit

Det. Limit - Practical Quantitation Limit (PQL)

Note:

The reported analytical results relate only to the sample submitted.

This report shall not be reproduced, except in full, without the written approval from ESC.

Reported: 08/05/11 13:19 Revised: 08/05/11 20:02



YOUR LAB OF CHOICE

12065 Lebanon Rd.
 Mt. Juliet, TN 37122
 (615) 758-5858
 1-800-767-5859
 Fax (615) 758-5859

Tax I.D. 62-0814289

Est. 1970

REPORT OF ANALYSIS

Charlie Jensen
 Encana
 2717 Co. Rd. 215, Ste 100
 Parachute, CO 81635

August 05, 2011

Date Received : July 29, 2011
 Description : J13/N13 Sediment Basin Sample
 Sample ID : J13-072811
 Collected By : Aaron Stacy
 Collection Date : 07/28/11 10:20

ESC Sample # : L528543-03

Site ID :

Project # :

Parameter	Result	Det. Limit	Units	Method	Date	Dil.
Chloride	26.	1.0	mg/l	9056	08/01/11	1
Sulfate	49.	5.0	mg/l	9056	08/01/11	1
Dissolved Solids	490	10.	mg/l	2540C	08/05/11	1
Benzene	BDL	0.00050	mg/l	8021B	07/31/11	1
Toluene	BDL	0.0050	mg/l	8021B	07/31/11	1
Ethylbenzene	BDL	0.00050	mg/l	8021B	07/31/11	1
Total Xylene	BDL	0.0015	mg/l	8021B	07/31/11	1
Surrogate Recovery(%) a,a,a-Trifluorotoluene (PID)	103.		% Rec.	8021B	07/31/11	1

BDL - Below Detection Limit
 Det. Limit - Practical Quantitation Limit (PQL)
 Note:
 The reported analytical results relate only to the sample submitted.
 This report shall not be reproduced, except in full, without the written approval from ESC.
 Reported: 08/05/11 13:19 Revised: 08/05/11 20:02



Encana
 Charlie Jensen
 2717 Co. Rd. 215, Ste 100
 Parachute, CO 81635

Quality Assurance Report
 Level II
 L528543

12065 Lebanon Rd.
 Mt. Juliet, TN 37122
 (615) 758-5858
 1-800-767-5859
 Fax (615) 758-5859
 Tax I.D. 62-0814289
 Est. 1970

August 05, 2011

Analyte	Result	Laboratory Blank		Limit	Batch	Date Analyzed
		Units	% Rec			
Chloride	< 1	mg/l			WG548373	08/01/11 10:33
Sulfate	< 5	mg/l			WG548373	08/01/11 10:33
Benzene	< .0005	mg/l			WG548212	07/30/11 20:43
Ethylbenzene	< .0005	mg/l			WG548212	07/30/11 20:43
Toluene	< .005	mg/l			WG548212	07/30/11 20:43
Total Xylene	< .0015	mg/l			WG548212	07/30/11 20:43
a, a, a-Trifluorotoluene (PID)		% Rec.	102.8	55-122	WG548212	07/30/11 20:43
Sulfate	< 5	mg/l			WG548494	08/02/11 08:21
Dissolved Solids	< 10	mg/l			WG548431	08/05/11 10:50

Analyte	Units	Duplicate			Limit	Ref Samp	Batch
		Result	Duplicate	RPD			
Chloride	mg/l	6.30	6.30	0.475	20	L528505-17	WG548373
Chloride	mg/l	3.10	3.10	0.643	20	L528505-19	WG548373
Sulfate	mg/l	0	0	0	20	L528505-19	WG548373
Sulfate	mg/l	59.0	59.0	0	20	L528552-01	WG548494
Dissolved Solids	mg/l	560.	563.	0.355	5	L528543-01	WG548431

Analyte	Units	Laboratory Control Sample		% Rec	Limit	Batch
		Known Val	Result			
Chloride	mg/l	40	40.1	100.	90-110	WG548373
Sulfate	mg/l	40	40.2	101.	90-110	WG548373
Benzene	mg/l	.05	0.0521	104.	79-114	WG548212
Ethylbenzene	mg/l	.05	0.0513	103.	80-116	WG548212
Toluene	mg/l	.05	0.0519	104.	79-112	WG548212
Total Xylene	mg/l	.15	0.158	106.	84-118	WG548212
a, a, a-Trifluorotoluene (PID)				101.3	55-122	WG548212
Sulfate	mg/l	40	40.4	101.	90-110	WG548494
Dissolved Solids	mg/l	8800	8580	97.5	85-115	WG548431

Analyte	Units	Laboratory Control Sample Duplicate			Limit	RPD	Limit	Batch
		Result	Ref	%Rec				
Chloride	mg/l	40.1	40.1	100.	90-110	0	20	WG548373
Sulfate	mg/l	40.0	40.2	100.	90-110	0.499	20	WG548373
Benzene	mg/l	0.0503	0.0521	100.	79-114	3.63	20	WG548212
Ethylbenzene	mg/l	0.0494	0.0513	99.0	80-116	3.67	20	WG548212
Toluene	mg/l	0.0494	0.0519	99.0	79-112	4.86	20	WG548212
Total Xylene	mg/l	0.151	0.158	101.	84-118	4.47	20	WG548212

* Performance of this Analyte is outside of established criteria.
 For additional information, please see Attachment A 'List of Analytes with QC Qualifiers.'



YOUR LAB OF CHOICE

Encana
 Charlie Jensen
 2717 Co. Rd. 215, Ste 100
 Parachute, CO 81635

Quality Assurance Report
 Level II

L528543

12065 Lebanon Rd.
 Mt. Juliet, TN 37122
 (615) 758-5858
 1-800-767-5859
 Fax (615) 758-5859

Tax I.D. 62-0814289

Est. 1970

August 05, 2011

Analyte	Laboratory Control Sample Duplicate				Limit	RPD	Limit	Batch
	Units	Result	Ref	%Rec				
a,a,a-Trifluorotoluene (PID)				102.4	55-122			
Sulfate	mg/l	40.4	40.4	101.	90-110	0	20	WG548494
Dissolved Solids	mg/l	8580	8580	97.0	85-115	0.0466	20	WG548431

Analyte	Units	Matrix Spike				Limit	Ref Samp	Batch
		MS Res	Ref Res	TV	% Rec			
Sulfate	mg/l	53.4	0	50	107.	80-120	L528660-02	WG548373
Benzene	mg/l	0.0531	0	.05	106.	35-147	L528489-01	WG548212
Ethylbenzene	mg/l	0.0555	0	.05	111.	39-141	L528489-01	WG548212
Toluene	mg/l	0.0565	0	.05	113.	35-148	L528489-01	WG548212
Total Xylene	mg/l	0.169	0	.15	113.	33-151	L528489-01	WG548212

Analyte	Units	Matrix Spike Duplicate			Limit	RPD	Limit	Ref Samp	Batch
		MSD	Ref	%Rec					
Sulfate	mg/l	52.3	53.4	105.	80-120	2.08	20	L528660-02	WG548373
Benzene	mg/l	0.0503	0.0531	101.	35-147	5.28	20	L528489-01	WG548212
Ethylbenzene	mg/l	0.0524	0.0555	105.	39-141	5.67	20	L528489-01	WG548212
Toluene	mg/l	0.0520	0.0565	104.	35-148	8.19	20	L528489-01	WG548212
Total Xylene	mg/l	0.158	0.169	105.	33-151	6.84	20	L528489-01	WG548212

Batch number / Run number / Sample number cross reference

WG548373: R1798850: L528543-01 02 03
 WG548212: R1800010: L528543-01 02 03
 WG548494: R1801130: L528543-01
 WG548431: R1804171: L528543-01 02 03

* * Calculations are performed prior to rounding of reported values.
 * Performance of this Analyte is outside of established criteria.
 For additional information, please see Attachment A 'List of Analytes with QC Qualifiers.'



YOUR LAB OF CHOICE

Encana
Charlie Jensen
2717 Co. Rd. 215, Ste 100
Parachute, CO 81635

Quality Assurance Report
Level II

L528543

12065 Lebanon Rd.
Mt. Juliet, TN 37122
(615) 758-5858
1-800-767-5859
Fax (615) 758-5859

Tax I.D. 62-0814289

Est. 1970

August 05, 2011

The data package includes a summary of the analytic results of the quality control samples required by the SW-846 or CWA methods. The quality control samples include a method blank, a laboratory control sample, and the matrix spike/matrix spike duplicate analysis. If a target parameter is outside the method limits, every sample that is effected is flagged with the appropriate qualifier in Appendix B of the analytic report.

Method Blank - an aliquot of reagent water carried through the entire analytic process. The method blank results indicate if any possible contamination exposure during the sample handling, digestion or extraction process, and analysis. Concentrations of target analytes above the reporting limit in the method blank are qualified with the "B" qualifier.

Laboratory Control Sample - is a sample of known concentration that is carried through the digestion/extraction and analysis process. The percent recovery, expressed as a percentage of the theoretical concentration, has statistical control limits indicating that the analytic process is "in control". If a target analyte is outside the control limits for the laboratory control sample or any other control sample, the parameter is flagged with a "J4" qualifier for all effected samples.

Matrix Spike and Matrix Spike Duplicate - is two aliquots of an environmental sample that is spiked with known concentrations of target analytes. The percent recovery of the target analytes also has statistical control limits. If any recoveries that are outside the method control limits, the sample that was selected for matrix spike/matrix spike duplicate analysis is flagged with either a "J5" or a "J6". The relative percent difference (%RPD) between the matrix spike and the matrix spike duplicate recoveries is all calculated. If the RPD is above the method limit, the effected samples are flagged with a "J3" qualifier.

