



# Kerr-McGee Oil & Gas Onshore LP

A subsidiary of Anadarko Petroleum Corporation

1099 18<sup>th</sup> Street  
Denver, CO 80202  
720-929-6000

January 7, 2013

Department of Natural Resources  
Oil and Gas Conservation Commission  
The Chancery Building  
1120 Lincoln St., Suite 801  
Denver, CO 80203

Re: **30 Day Certification Letter - 318A-e**  
MELBON 19N-W8HZ  
Township 2 North, Range 65 West, Section 17: SW/4NW/4  
Unit Spacing: 02N-65W-8 SW/4  
02N-65W-17 NW/4  
Weld County, Colorado

Ladies/Gentlemen:

Kerr-McGee Oil and Gas Onshore LP ("KMG") hereby certifies to the Director that a thirty (30) day notice has been given by certified mail to all owners in the proposed wellbore spacing unit. We have not received any objections to such well location, proposed spacing unit, or additional producing formation. KMG hereby requests the Director to approve the boundary well.

If you have any questions or issues regarding this permit, please contact Cheryl Light at (720) 929-6461.

Very truly yours,

**Kerr-McGee Oil and Gas Onshore LP**

A handwritten signature in blue ink, appearing to read "Lauren Kucera".

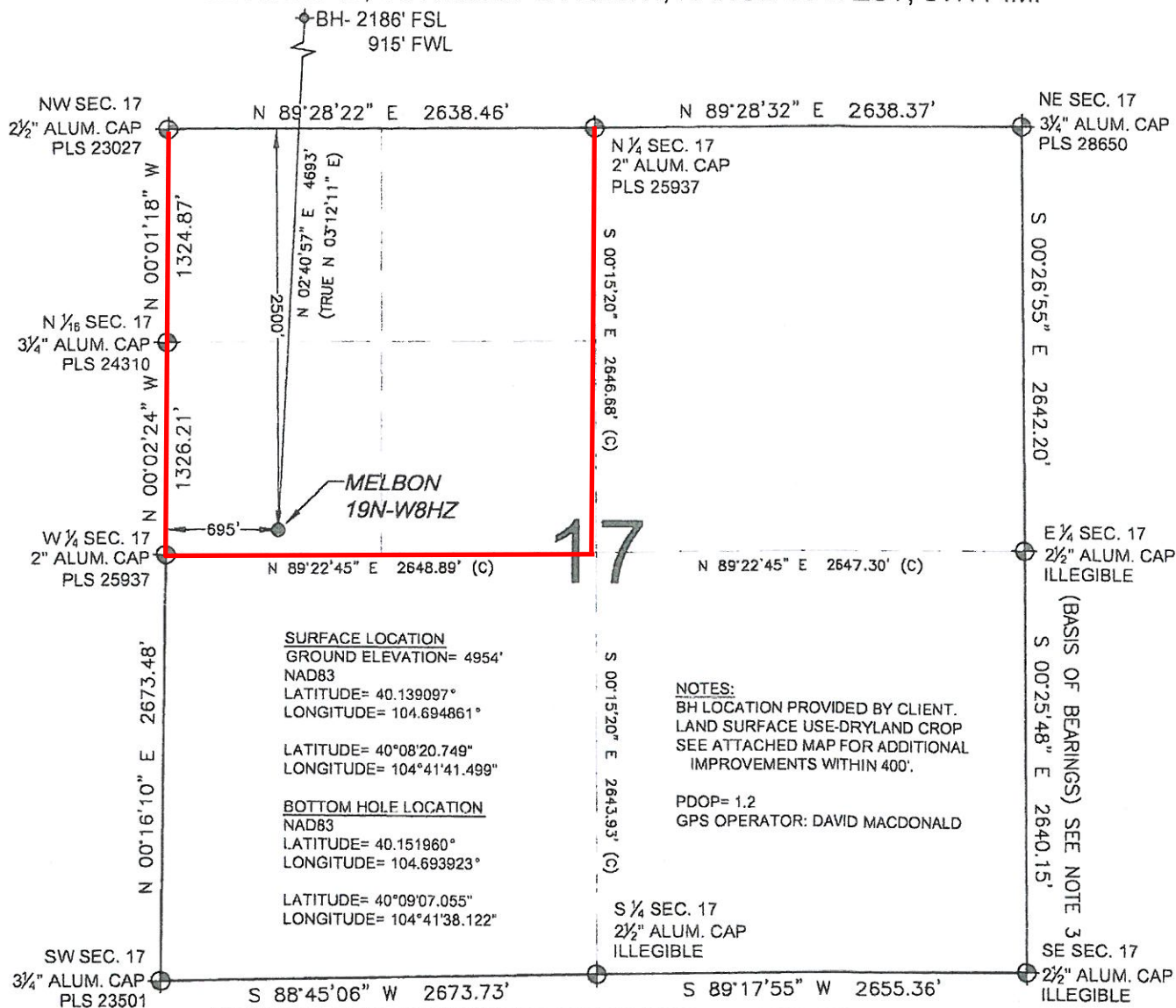
**Lauren Kucera**  
**Regulatory Analyst I**

Enclosure

# SPACING UNIT MAP

## WELL LOCATION CERTIFICATE: MELBON 19N-W8HZ

SECTION 17, TOWNSHIP 2 NORTH, RANGE 65 WEST, 6TH P.M.



**SURFACE LOCATION**  
 GROUND ELEVATION= 4954'  
 NAD83  
 LATITUDE= 40.139097°  
 LONGITUDE= 104.694861°

LATITUDE= 40°08'20.749"  
 LONGITUDE= 104°41'41.499"

**BOTTOM HOLE LOCATION**  
 NAD83  
 LATITUDE= 40.151860°  
 LONGITUDE= 104.693923°

LATITUDE= 40°09'07.055"  
 LONGITUDE= 104°41'38.122°

**NOTES:**  
 BH LOCATION PROVIDED BY CLIENT.  
 LAND SURFACE USE-DRYLAND CROP  
 SEE ATTACHED MAP FOR ADDITIONAL  
 IMPROVEMENTS WITHIN 400'.

PDOP= 1.2  
 GPS OPERATOR: DAVID MACDONALD

S ¼ SEC. 17  
 2 ½" ALUM. CAP  
 ILLEGIBLE

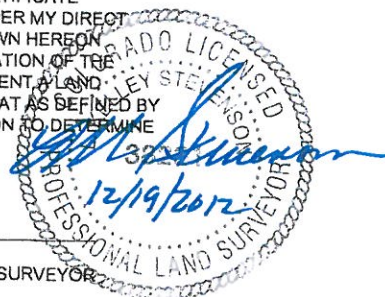
**LEGEND**

- ⊙ = EXISTING MONUMENT
- ⊙ = PROPOSED WELL
- BH = BOTTOM HOLE
- ⬠ = BOTTOM HOLE
- ⬠ = EXISTING WELL

**NOTES:**

- THIS FIELD SURVEY CONFORMS TO THE MINIMUM STANDARDS SET BY THE C.O.G.C.C., RULE NO. 215
- HORIZONTAL POSITIONS AND ORTHOMETRIC ELEVATIONS SHOWN AT THE WELL HEAD, ARE BASED ON GPS-RTK POSITIONS DERIVED FROM MINIMUM 2-HOUR STATIC OBSERVATIONS CORRECTED BY THE NATIONAL GEODETIC SURVEY ONLINE POSITIONING USER SERVICE, O.P.U.S. DATUM: HORIZONTAL = NAD83/2007, VERTICAL = NAVD88
- THE BASIS OF BEARINGS ARE STATE PLANE COORDINATE SYSTEM GRID BEARINGS SHOWN HEREON BETWEEN THE DESCRIBED MONUMENTS SHOWN HEREON.
- GRID DISTANCES ARE SHOWN, AS MEASURED IN THE FIELD, WITH TIES TO WELLS MEASURED PERPENDICULAR TO SECTION LINES.

I. L. KELLEY STEVENSON, A LICENSED PROFESSIONAL LAND SURVEYOR IN THE STATE OF COLORADO DO HEREBY CERTIFY TO **KERR-MCGEE OIL & GAS ONSHORE LP**, THAT THE SURVEY AND WELL LOCATION CERTIFICATE SHOWN HEREON WERE DONE BY ME OR UNDER MY DIRECT SUPERVISION AND THAT THE DRAWING SHOWN HEREON ACCURATELY DEPICTS THE PROPOSED LOCATION OF THE WELL. THIS CERTIFICATE DOES NOT REPRESENT A LAND SURVEY PLAT OR IMPROVEMENT SURVEY PLAT AS DEFINED BY C.R.S. 38-51-102 AND CANNOT BE RELIED UPON TO DETERMINE OWNERSHIP.



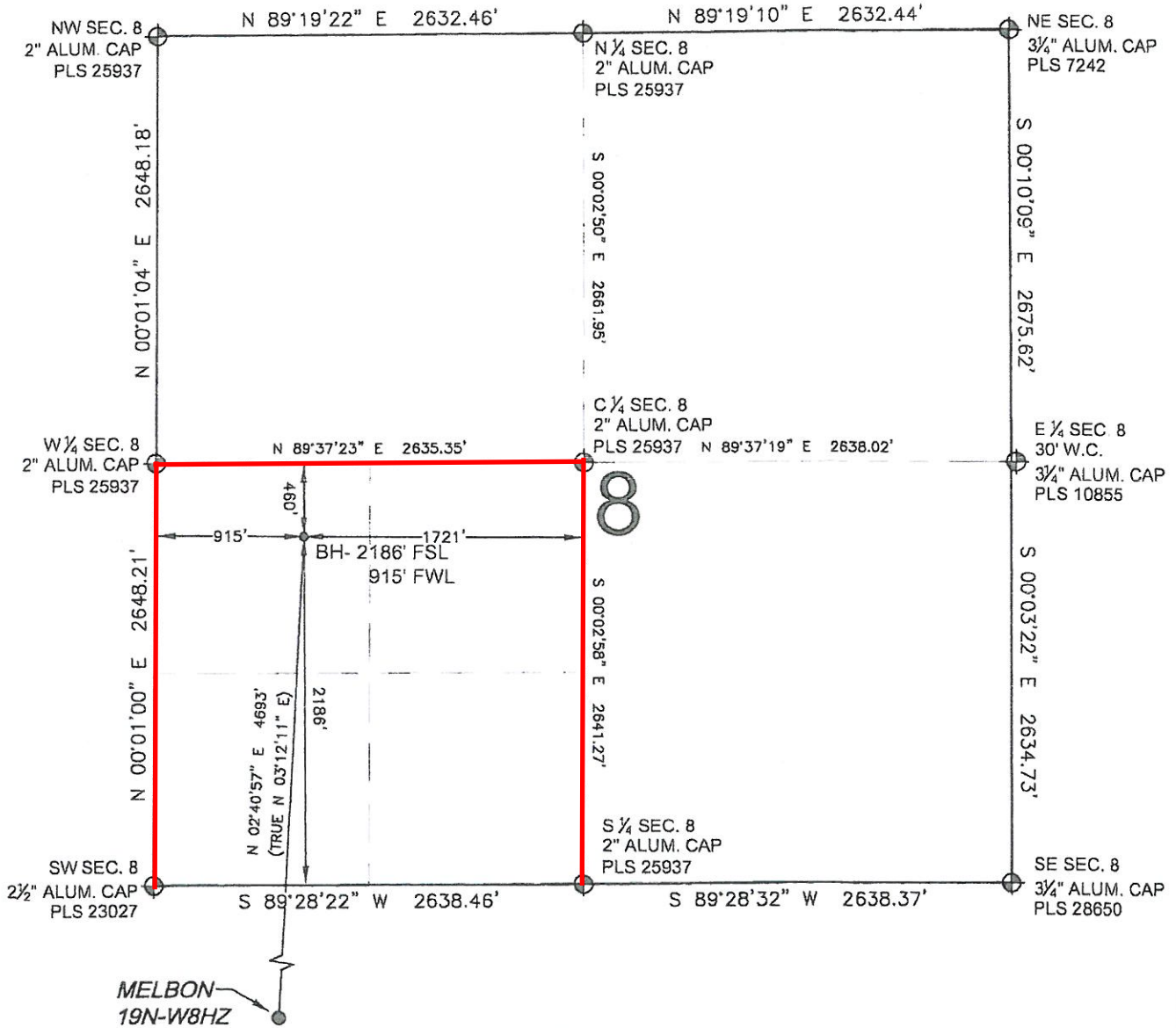
I. KELLEY STEVENSON, PLS 38231  
 COLORADO LICENSED PROFESSIONAL LAND SURVEYOR  
 FOR AND ON BEHALF OF P.F.S., LLC

NOTICE: ACCORDING TO COLORADO LAW YOU MUST COMMENCE ANY LEGAL ACTION BASED UPON ANY DEFECT IN THIS SURVEY WITHIN THREE YEARS AFTER YOU FIRST DISCOVER SUCH DEFECT. IN NO EVENT MAY ANY ACTION BASED UPON ANY DEFECT IN THIS SURVEY BE COMMENCED MORE THAN TEN YEARS FROM THIS SAID DATE OF THIS CERTIFICATION SHOWN HEREON.

PREPARED BY:  Petroleum Field Services, LLC 1801 W. 15th Ave. Denver, CO 80204	FIELD DATE: 12-12-12 DRAWING DATE: 12-14-12 BY: SMF CHECKED: TJN	SURFACE LOCATION: SW 1/4 NW 1/4, SEC. 17, T2N, R65W, 6TH P.M. WELD COUNTY, COLORADO
--	---	--

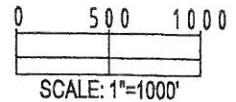
# WELL LOCATION CERTIFICATE: MELBON 19N-W8HZ

SECTION 8, TOWNSHIP 2 NORTH, RANGE 65 WEST, 6TH P.M.



### LEGEND

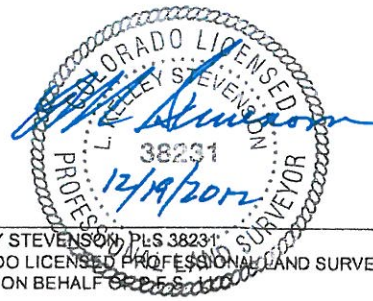
- ⊕ = EXISTING MONUMENT
- ⊙ = PROPOSED WELL
- BH = BOTTOM HOLE
- ⊕ = BOTTOM HOLE
- ⊙ = EXISTING WELL



### NOTES:

- THIS FIELD SURVEY CONFORMS TO THE MINIMUM STANDARDS SET BY THE C.O.G.C.C., RULE NO. 215
- HORIZONTAL POSITIONS AND ORTHOMETRIC ELEVATIONS SHOWN AT THE WELL HEAD, ARE BASED ON GPS-RTK POSITIONS DERIVED FROM MINIMUM 2-HOUR STATIC OBSERVATIONS CORRECTED BY THE NATIONAL GEODETIC SURVEY ONLINE POSITIONING USER SERVICE, O.P.U.S. DATUM: HORIZONTAL = NAD83/2007, VERTICAL = NAVD88
- THE BASIS OF BEARINGS ARE STATE PLANE COORDINATE SYSTEM GRID BEARINGS SHOWN HEREON BETWEEN THE DESCRIBED MONUMENTS SHOWN HEREON.
- GRID DISTANCES ARE SHOWN, AS MEASURED IN THE FIELD, WITH TIES TO WELLS MEASURED PERPENDICULAR TO SECTION LINES.

SHEET 2 OF 2



L. KELLEY STEVENSON, PLS 38231  
COLORADO LICENSED PROFESSIONAL LAND SURVEYOR  
FOR AND ON BEHALF OF PLS 38231

PREPARED BY: <b>PFS</b> Petroleum Field Services, LLC 1801 W. 13th Ave. Denver, CO 80204	FIELD DATE: 12-12-12 DRAWING DATE: 12-14-12 BY: SMF CHECKED: TJN	SURFACE LOCATION: SW 1/4 NW 1/4, SEC. 17, T2N, R65W, 6TH P.M. WELD COUNTY, COLORADO
--	---	--

NOTICE: ACCORDING TO COLORADO LAW YOU MUST COMMENCE ANY LEGAL ACTION BASED UPON ANY DEFECT IN THIS SURVEY WITHIN THREE YEARS AFTER YOU FIRST DISCOVER SUCH DEFECT. IN NO EVENT MAY ANY ACTION BASED UPON ANY DEFECT IN THIS SURVEY BE COMMENCED MORE THAN TEN YEARS FROM THIS SAID DATE OF THIS CERTIFICATION SHOWN HEREON.