

KERR-MCGEE OIL & GAS ONSHORE LP

Location: COLORADO Slot: SLOT#1 MELBON 12N-8HZ (2500' FNL & 635' FWL, SEC.17)
Field: WELD COUNTY (KERR MCGEE) Well: MELBON 12N-8HZ
Facility: SEC.17-T2N-R65W Wellbore: MELBON 12N-8HZ PWB

Plot reference wellpath is MELBON 12N-8HZ (PERMIT REV-B.0) PWP

True vertical depths are referenced to Rig on SLOT#1 MELBON 12N-8HZ (2499' FNL & 1005' FWL) (RT)	Grid System: NAD83 / Lambert Colorado SP, Northern Zone (501), US feet
Measured depths are referenced to Rig on SLOT#1 MELBON 12N-8HZ (2499' FNL & 1005' FWL) (RT)	North Reference: True north
Rig on SLOT#1 MELBON 12N-8HZ (2499' FNL & 1005' FWL) (RT) to Mean Sea Level: 4972 feet	Scale: True distance
Mean Sea Level to Mud line (At Slot: SLOT#1 MELBON 12N-8HZ (2500' FNL & 635' FWL, SEC.17)): 0 feet	Depths are in feet
Coordinates are in feet referenced to Slot	Created by: wiljer02 on 1/4/2013

Location Information

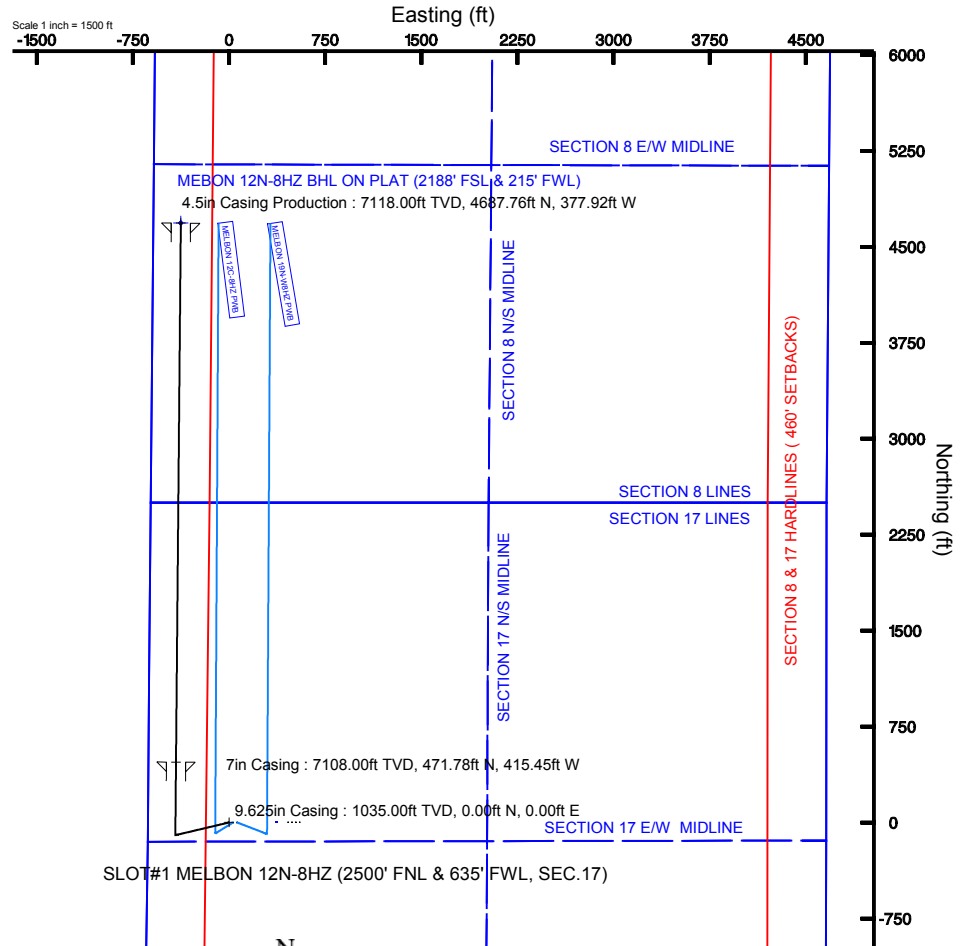
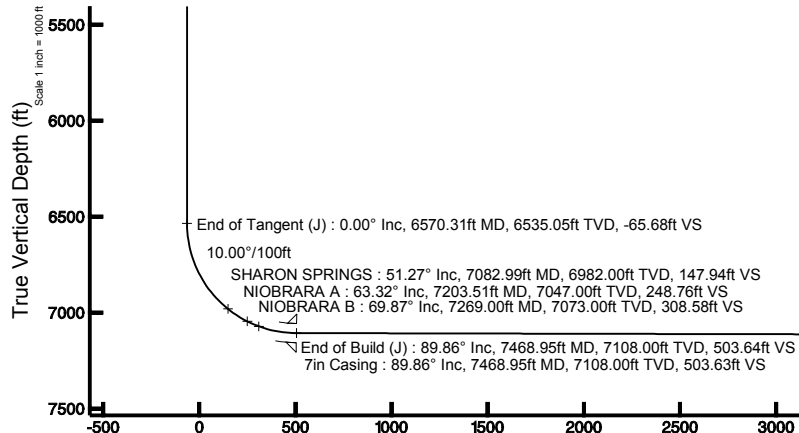
Facility Name			Grid East (US ft)	Grid North (US ft)	Latitude	Longitude
SEC.17-T2N-R65W			3225409.555	1294541.951	40°08'20.758"N	104°41'37.575"W
Box	Local N (ft)	Local E (ft)	Grid East (US ft)	Grid North (US ft)	Latitude	Longitude
SLOT#1 MELBON 12N-8HZ (2500' FNL & 635' FWL, SEC.17)	-0.80	-370.00	322539.596	1294537.983	40°08'20.749"N	104°41'42.270"W
Rig on SLOT#1 MELBON 12N-8HZ (2499' FNL & 1005' FWL) (RT) to Mud line (At Slot: SLOT#1 MELBON 12N-8HZ (2500' FNL & 635' FWL, SEC.17))						497.2R
Mean Sea Level to Mud line (At Slot: SLOT#1 MELBON 12N-8HZ (2500' FNL & 635' FWL, SEC.17))						0R
Rig on SLOT#1 MELBON 12N-8HZ (2499' FNL & 1005' FWL) (RT) to Mean Sea Level						497.2R

Well Profile Data

Design Comment	MD (ft)	Inc (°)	Az (°)	TVD (ft)	Local N (ft)	Local E (ft)	DLS (°/100ft)	VS (ft)
Tie On	17.00	0.000	256.650	17.00	0.00	0.00	0.00	0.00
End of Tangent	1200.00	0.000	256.650	1200.00	0.00	0.00	0.00	0.00
End of Build (J)	1700.00	10.000	256.650	1697.47	-10.05	-42.35	2.00	-6.61
End of Tangent (J)	3687.73	10.000	256.650	3655.00	-89.75	-378.19	0.00	-59.07
End of Drop (J)	4187.73	0.000	0.510	4152.47	-99.80	-420.53	2.00	-65.68
End of Tangent (J)	6570.31	0.000	0.510	6535.05	-99.80	-420.53	0.00	-65.68
End of Build (J)	7468.95	89.864	0.510	7108.00	471.78	-415.45	10.00	503.64
End of Tangent (J)	11685.12	89.864	0.510	7118.00	4687.76	-377.92	0.00	4702.97

Targets

Name	MD (ft)	TVD (ft)	Local N (ft)	Local E (ft)	Grid East (US ft)	Grid North (US ft)	Latitude	Longitude
SECTION 17 E/W MIDLINE		8.00	0.91	364.64	3225404.19	1294542.21	40°08'20.758"N	104°41'37.575"W
SECTION 17 LINES		6.00	0.91	364.64	3225404.19	1294542.21	40°08'20.758"N	104°41'37.575"W
SECTION 17 N/S MIDLINE		8.00	0.91	364.64	3225404.19	1294542.21	40°08'20.758"N	104°41'37.575"W
SECTION 8 & 17 HARDLINES (460' SETBACKS)		6.00	0.91	364.64	3225404.20	1294542.20	40°08'20.758"N	104°41'37.575"W
SECTION 8 E/W MIDLINE		8.00	0.91	364.64	3225404.19	1294542.21	40°08'20.758"N	104°41'37.575"W
SECTION 8 LINES		6.00	0.91	364.64	3225404.19	1294542.21	40°08'20.758"N	104°41'37.575"W
SECTION 8 N/S MIDLINE		8.00	0.91	364.64	3225404.19	1294542.21	40°08'20.758"N	104°41'37.575"W
MEBON 12N-8HZ BHL ON PLAT (2188' FSL & 215' FWL)		7118.00	4687.78	-377.92	3224619.15	1299221.94	40°09'07.074"N	104°41'47.137"W





Planned Wellpath Report

MELBON 12N-8HZ (PERMIT REV-B.0) PWP
Page 1 of 6



REFERENCE WELLPATH IDENTIFICATION

Operator	KERR-MCGEE OIL & GAS ONSHORE LP	Slot	SLOT#1 MELBON 12N-8HZ (2500' FNL & 635' FWL, SEC.17)
Area	COLORADO	Well	MELBON 12N-8HZ
Field	WELD COUNTY (KERR MCGEE)	Wellbore	MELBON 12N-8HZ PWB
Facility	SEC.17-T2N-R65W		

REPORT SETUP INFORMATION

Projection System	NAD83 / Lambert Colorado SP, Northern Zone (501), US feet	Software System	WellArchitect® 3.0.2
North Reference	True	User	Wilsjef02
Scale	0.999959	Report Generated	1/4/2013 at 09:56:07
Convergence at slot	0.52° East	Database/Source file	WellArchitectDB/MELBON_12N-8HZ_PWB.xml

WELLPATH LOCATION

	Local coordinates		Grid coordinates		Geographic coordinates	
	North[ft]	East[ft]	Easting[US ft]	Northing[US ft]	Latitude	Longitude
Slot Location	-0.60	-370.00	3225039.60	1294537.98	40°08'20.749"N	104°41'42.270"W
Facility Reference Pt			3225409.56	1294541.95	40°08'20.755"N	104°41'37.506"W
Field Reference Pt			3197771.84	1268891.29	40°04'09.600"N	104°47'36.000"W

WELLPATH DATUM

Calculation method	Minimum curvature	Rig on SLOT#1 MELBON 12N-8HZ (2499' FNL & 1005' FWL) (RT) to Facility Vertical Datum
Horizontal Reference Pt	Slot	Rig on SLOT#1 MELBON 12N-8HZ (2499' FNL & 1005' FWL) (RT) to Mean Sea Level
Vertical Reference Pt	Rig on SLOT#1 MELBON 12N-8HZ (2499' FNL & 1005' FWL) (RT)	Rig on SLOT#1 MELBON 12N-8HZ (2499' FNL & 1005' FWL) (RT) to Mud Line at Slot (SLOT#1 MELBON 12N-8HZ (2500' FNL & 635' FWL, SEC.17))
MD Reference Pt	Rig on SLOT#1 MELBON 12N-8HZ (2499' FNL & 1005' FWL) (RT)	Section Origin
Field Vertical Reference	Mean Sea Level	Section Azimuth

REFERENCE WELLPATH IDENTIFICATION

Operator	KERR-MCGEE OIL & GAS ONSHORE LP	Slot	SLOT#1 MELBON 12N-8HZ (2500' FNL & 635' FWL, SEC.17)
Area	COLORADO	Well	MELBON 12N-8HZ
Field	WELD COUNTY (KERR MCGEE)	Wellbore	MELBON 12N-8HZ PWB
Facility	SEC.17-T2N-R65W		

WELLPATH DATA (130 stations) † = interpolated/extrapolated station

MD [ft]	Inclination [°]	Azimuth [°]	TVD [ft]	Vert Sect [ft]	North [ft]	East [ft]	Latitude	Longitude	DLS [°/100ft]	Comments
0.00†	0.000	256.650	0.00	0.00	0.00	0.00	40°08'20.749"N	104°41'42.270"W	0.00	
17.00	0.000	256.650	17.00	0.00	0.00	0.00	40°08'20.749"N	104°41'42.270"W	0.00	Tie On
117.00†	0.000	256.650	117.00	0.00	0.00	0.00	40°08'20.749"N	104°41'42.270"W	0.00	
217.00†	0.000	256.650	217.00	0.00	0.00	0.00	40°08'20.749"N	104°41'42.270"W	0.00	
317.00†	0.000	256.650	317.00	0.00	0.00	0.00	40°08'20.749"N	104°41'42.270"W	0.00	
417.00†	0.000	256.650	417.00	0.00	0.00	0.00	40°08'20.749"N	104°41'42.270"W	0.00	
517.00†	0.000	256.650	517.00	0.00	0.00	0.00	40°08'20.749"N	104°41'42.270"W	0.00	
617.00†	0.000	256.650	617.00	0.00	0.00	0.00	40°08'20.749"N	104°41'42.270"W	0.00	
717.00†	0.000	256.650	717.00	0.00	0.00	0.00	40°08'20.749"N	104°41'42.270"W	0.00	
817.00†	0.000	256.650	817.00	0.00	0.00	0.00	40°08'20.749"N	104°41'42.270"W	0.00	
917.00†	0.000	256.650	917.00	0.00	0.00	0.00	40°08'20.749"N	104°41'42.270"W	0.00	
1017.00†	0.000	256.650	1017.00	0.00	0.00	0.00	40°08'20.749"N	104°41'42.270"W	0.00	
1117.00†	0.000	256.650	1117.00	0.00	0.00	0.00	40°08'20.749"N	104°41'42.270"W	0.00	
1200.00	0.000	256.650	1200.00	0.00	0.00	0.00	40°08'20.749"N	104°41'42.270"W	0.00	End of Tangent
1217.00†	0.340	256.650	1217.00	-0.01	-0.01	-0.05	40°08'20.749"N	104°41'42.271"W	2.00	
1317.00†	2.340	256.650	1316.97	-0.36	-0.55	-2.32	40°08'20.744"N	104°41'42.300"W	2.00	
1417.00†	4.340	256.650	1416.79	-1.25	-1.90	-7.99	40°08'20.730"N	104°41'42.373"W	2.00	
1517.00†	6.340	256.650	1516.35	-2.66	-4.05	-17.05	40°08'20.709"N	104°41'42.489"W	2.00	
1617.00†	8.340	256.650	1615.53	-4.60	-7.00	-29.48	40°08'20.680"N	104°41'42.650"W	2.00	
1700.00	10.000	256.650	1697.47	-6.61	-10.05	-42.35	40°08'20.650"N	104°41'42.815"W	2.00	End of Build (J)
1717.00†	10.000	256.650	1714.21	-7.06	-10.73	-45.22	40°08'20.643"N	104°41'42.852"W	0.00	
1817.00†	10.000	256.650	1812.69	-9.70	-14.74	-62.11	40°08'20.603"N	104°41'43.070"W	0.00	
1917.00†	10.000	256.650	1911.17	-12.34	-18.75	-79.01	40°08'20.564"N	104°41'43.287"W	0.00	
2017.00†	10.000	256.650	2009.65	-14.98	-22.76	-95.91	40°08'20.524"N	104°41'43.505"W	0.00	
2117.00†	10.000	256.650	2108.13	-17.62	-26.77	-112.80	40°08'20.484"N	104°41'43.722"W	0.00	
2217.00†	10.000	256.650	2206.61	-20.26	-30.78	-129.70	40°08'20.445"N	104°41'43.940"W	0.00	
2317.00†	10.000	256.650	2305.09	-22.90	-34.79	-146.59	40°08'20.405"N	104°41'44.157"W	0.00	
2417.00†	10.000	256.650	2403.57	-25.53	-38.80	-163.49	40°08'20.366"N	104°41'44.375"W	0.00	
2517.00†	10.000	256.650	2502.05	-28.17	-42.81	-180.38	40°08'20.326"N	104°41'44.593"W	0.00	
2617.00†	10.000	256.650	2600.53	-30.81	-46.82	-197.28	40°08'20.286"N	104°41'44.810"W	0.00	
2717.00†	10.000	256.650	2699.01	-33.45	-50.83	-214.17	40°08'20.247"N	104°41'45.028"W	0.00	
2817.00†	10.000	256.650	2797.50	-36.09	-54.84	-231.07	40°08'20.207"N	104°41'45.245"W	0.00	
2917.00†	10.000	256.650	2895.98	-38.73	-58.85	-247.97	40°08'20.167"N	104°41'45.463"W	0.00	
3017.00†	10.000	256.650	2994.46	-41.37	-62.85	-264.86	40°08'20.128"N	104°41'45.680"W	0.00	
3117.00†	10.000	256.650	3092.94	-44.01	-66.86	-281.76	40°08'20.088"N	104°41'45.898"W	0.00	
3217.00†	10.000	256.650	3191.42	-46.65	-70.87	-298.65	40°08'20.049"N	104°41'46.115"W	0.00	
3317.00†	10.000	256.650	3289.90	-49.28	-74.88	-315.55	40°08'20.009"N	104°41'46.333"W	0.00	
3417.00†	10.000	256.650	3388.38	-51.92	-78.89	-332.44	40°08'19.969"N	104°41'46.550"W	0.00	
3517.00†	10.000	256.650	3486.86	-54.56	-82.90	-349.34	40°08'19.930"N	104°41'46.768"W	0.00	
3617.00†	10.000	256.650	3585.34	-57.20	-86.91	-366.23	40°08'19.890"N	104°41'46.986"W	0.00	
3687.73	10.000	256.650	3655.00	-59.07	-89.75	-378.19	40°08'19.862"N	104°41'47.139"W	0.00	End of Tangent (J)
3717.00†	9.415	256.650	3683.85	-59.82	-90.89	-382.99	40°08'19.851"N	104°41'47.201"W	2.00	
3817.00†	7.415	256.650	3782.77	-62.04	-94.27	-397.22	40°08'19.817"N	104°41'47.385"W	2.00	
3917.00†	5.415	256.650	3882.14	-63.74	-96.85	-408.09	40°08'19.792"N	104°41'47.525"W	2.00	
4017.00†	3.415	256.650	3981.83	-64.91	-98.62	-415.58	40°08'19.774"N	104°41'47.621"W	2.00	



Planned Wellpath Report

MELBON 12N-8HZ (PERMIT REV-B.0) PWP

Page 3 of 6



REFERENCE WELLPATH IDENTIFICATION

Operator	KERR-MCGEE OIL & GAS ONSHORE LP	Slot	SLOT#1 MELBON 12N-8HZ (2500' FNL & 635' FWL, SEC.17)
Area	COLORADO	Well	MELBON 12N-8HZ
Field	WELD COUNTY (KERR MCGEE)	Wellbore	MELBON 12N-8HZ PWB
Facility	SEC.17-T2N-R65W		

WELLPATH DATA (130 stations) † = interpolated/extrapolated station

MD [ft]	Inclination [°]	Azimuth [°]	TVD [ft]	Vert Sect [ft]	North [ft]	East [ft]	Latitude	Longitude	DLS [°/100ft]	Comments
4044.21†	2.871	256.650	4009.00	-65.13	-98.97	-417.03	40°08'19.771"N	104°41'47.640"W	2.00	PARKMAN
4117.00†	1.415	256.650	4081.74	-65.55	-99.60	-419.68	40°08'19.765"N	104°41'47.674"W	2.00	
4187.73	0.000	0.510	4152.47	-65.68	-99.80	-420.53	40°08'19.763"N	104°41'47.685"W	2.00	End of Drop (J)
4217.00†	0.000	0.510	4181.73	-65.68	-99.80	-420.53	40°08'19.763"N	104°41'47.685"W	0.00	
4317.00†	0.000	0.510	4281.73	-65.68	-99.80	-420.53	40°08'19.763"N	104°41'47.685"W	0.00	
4417.00†	0.000	0.510	4381.73	-65.68	-99.80	-420.53	40°08'19.763"N	104°41'47.685"W	0.00	
4517.00†	0.000	0.510	4481.73	-65.68	-99.80	-420.53	40°08'19.763"N	104°41'47.685"W	0.00	
4617.00†	0.000	0.510	4581.73	-65.68	-99.80	-420.53	40°08'19.763"N	104°41'47.685"W	0.00	
4638.27†	0.000	0.510	4603.00	-65.68	-99.80	-420.53	40°08'19.763"N	104°41'47.685"W	0.00	SUSSEX
4717.00†	0.000	0.510	4681.73	-65.68	-99.80	-420.53	40°08'19.763"N	104°41'47.685"W	0.00	
4817.00†	0.000	0.510	4781.73	-65.68	-99.80	-420.53	40°08'19.763"N	104°41'47.685"W	0.00	
4917.00†	0.000	0.510	4881.73	-65.68	-99.80	-420.53	40°08'19.763"N	104°41'47.685"W	0.00	
5017.00†	0.000	0.510	4981.73	-65.68	-99.80	-420.53	40°08'19.763"N	104°41'47.685"W	0.00	
5117.00†	0.000	0.510	5081.73	-65.68	-99.80	-420.53	40°08'19.763"N	104°41'47.685"W	0.00	
5217.00†	0.000	0.510	5181.73	-65.68	-99.80	-420.53	40°08'19.763"N	104°41'47.685"W	0.00	
5317.00†	0.000	0.510	5281.73	-65.68	-99.80	-420.53	40°08'19.763"N	104°41'47.685"W	0.00	
5417.00†	0.000	0.510	5381.73	-65.68	-99.80	-420.53	40°08'19.763"N	104°41'47.685"W	0.00	
5517.00†	0.000	0.510	5481.73	-65.68	-99.80	-420.53	40°08'19.763"N	104°41'47.685"W	0.00	
5617.00†	0.000	0.510	5581.73	-65.68	-99.80	-420.53	40°08'19.763"N	104°41'47.685"W	0.00	
5717.00†	0.000	0.510	5681.73	-65.68	-99.80	-420.53	40°08'19.763"N	104°41'47.685"W	0.00	
5817.00†	0.000	0.510	5781.73	-65.68	-99.80	-420.53	40°08'19.763"N	104°41'47.685"W	0.00	
5917.00†	0.000	0.510	5881.73	-65.68	-99.80	-420.53	40°08'19.763"N	104°41'47.685"W	0.00	
6017.00†	0.000	0.510	5981.73	-65.68	-99.80	-420.53	40°08'19.763"N	104°41'47.685"W	0.00	
6117.00†	0.000	0.510	6081.73	-65.68	-99.80	-420.53	40°08'19.763"N	104°41'47.685"W	0.00	
6217.00†	0.000	0.510	6181.73	-65.68	-99.80	-420.53	40°08'19.763"N	104°41'47.685"W	0.00	
6317.00†	0.000	0.510	6281.73	-65.68	-99.80	-420.53	40°08'19.763"N	104°41'47.685"W	0.00	
6417.00†	0.000	0.510	6381.73	-65.68	-99.80	-420.53	40°08'19.763"N	104°41'47.685"W	0.00	
6517.00†	0.000	0.510	6481.73	-65.68	-99.80	-420.53	40°08'19.763"N	104°41'47.685"W	0.00	
6570.31	0.000	0.510	6535.05	-65.68	-99.80	-420.53	40°08'19.763"N	104°41'47.685"W	0.00	End of Tangent (J)
6617.00†	4.669	0.510	6581.68	-63.79	-97.90	-420.52	40°08'19.782"N	104°41'47.684"W	10.00	
6717.00†	14.669	0.510	6680.14	-47.08	-81.12	-420.37	40°08'19.947"N	104°41'47.683"W	10.00	
6817.00†	24.669	0.510	6774.18	-13.60	-47.51	-420.07	40°08'20.279"N	104°41'47.679"W	10.00	
6917.00†	34.669	0.510	6860.96	35.64	1.92	-419.63	40°08'20.768"N	104°41'47.673"W	10.00	
7017.00†	44.669	0.510	6937.84	99.14	65.68	-419.06	40°08'21.398"N	104°41'47.666"W	10.00	
7082.99†	51.268	0.510	6982.00	147.94	114.67	-418.62	40°08'21.882"N	104°41'47.660"W	10.00	SHARON SPRINGS
7117.00†	54.669	0.510	7002.48	174.97	141.81	-418.38	40°08'22.150"N	104°41'47.657"W	10.00	
7203.51†	63.320	0.510	7047.00	248.76	215.89	-417.72	40°08'22.882"N	104°41'47.649"W	10.00	NIOBRARA A
7217.00†	64.669	0.510	7052.91	260.83	228.01	-417.61	40°08'23.002"N	104°41'47.647"W	10.00	
7269.00†	69.869	0.510	7073.00	308.58	275.95	-417.19	40°08'23.476"N	104°41'47.642"W	10.00	NIOBRARA B
7317.00†	74.669	0.510	7087.61	354.11	321.65	-416.78	40°08'23.928"N	104°41'47.636"W	10.00	
7417.00†	84.669	0.510	7105.52	451.97	419.90	-415.91	40°08'24.898"N	104°41'47.625"W	10.00	
7468.95	89.864	0.510	7108.00	503.64	471.78	-415.45	40°08'25.411"N	104°41'47.619"W	10.00	End of Build (J)
7517.00†	89.864	0.510	7108.12	551.49	519.82	-415.02	40°08'25.886"N	104°41'47.614"W	0.00	
7617.00†	89.864	0.510	7108.35	651.09	619.82	-414.13	40°08'26.874"N	104°41'47.602"W	0.00	
7717.00†	89.864	0.510	7108.59	750.69	719.81	-413.24	40°08'27.862"N	104°41'47.591"W	0.00	



Planned Wellpath Report

MELBON 12N-8HZ (PERMIT REV-B.0) PWP

Page 4 of 6



REFERENCE WELLPATH IDENTIFICATION

Operator	KERR-MCGEE OIL & GAS ONSHORE LP	Slot	SLOT#1 MELBON 12N-8HZ (2500' FNL & 635' FWL, SEC.17)
Area	COLORADO	Well	MELBON 12N-8HZ
Field	WELD COUNTY (KERR MCGEE)	Wellbore	MELBON 12N-8HZ PWB
Facility	SEC.17-T2N-R65W		

WELLPATH DATA (130 stations) † = interpolated/extrapolated station

MD [ft]	Inclination [°]	Azimuth [°]	TVD [ft]	Vert Sect [ft]	North [ft]	East [ft]	Latitude	Longitude	DLS [°/100ft]	Comments
7817.00†	89.864	0.510	7108.83	850.29	819.81	-412.35	40°08'28.850"N	104°41'47.579"W	0.00	
7917.00†	89.864	0.510	7109.06	949.90	919.81	-411.46	40°08'29.839"N	104°41'47.568"W	0.00	
8017.00†	89.864	0.510	7109.30	1049.50	1019.80	-410.57	40°08'30.827"N	104°41'47.557"W	0.00	
8117.00†	89.864	0.510	7109.54	1149.10	1119.80	-409.68	40°08'31.815"N	104°41'47.545"W	0.00	
8217.00†	89.864	0.510	7109.78	1248.70	1219.79	-408.79	40°08'32.803"N	104°41'47.534"W	0.00	
8317.00†	89.864	0.510	7110.01	1348.30	1319.79	-407.90	40°08'33.791"N	104°41'47.522"W	0.00	
8417.00†	89.864	0.510	7110.25	1447.90	1419.79	-407.01	40°08'34.779"N	104°41'47.511"W	0.00	
8517.00†	89.864	0.510	7110.49	1547.50	1519.78	-406.12	40°08'35.768"N	104°41'47.499"W	0.00	
8617.00†	89.864	0.510	7110.72	1647.10	1619.78	-405.23	40°08'36.756"N	104°41'47.488"W	0.00	
8717.00†	89.864	0.510	7110.96	1746.70	1719.77	-404.34	40°08'37.744"N	104°41'47.477"W	0.00	
8817.00†	89.864	0.510	7111.20	1846.30	1819.77	-403.45	40°08'38.732"N	104°41'47.465"W	0.00	
8917.00†	89.864	0.510	7111.44	1945.90	1919.76	-402.56	40°08'39.720"N	104°41'47.454"W	0.00	
9017.00†	89.864	0.510	7111.67	2045.51	2019.76	-401.67	40°08'40.708"N	104°41'47.442"W	0.00	
9117.00†	89.864	0.510	7111.91	2145.11	2119.76	-400.78	40°08'41.697"N	104°41'47.431"W	0.00	
9217.00†	89.864	0.510	7112.15	2244.71	2219.75	-399.89	40°08'42.685"N	104°41'47.419"W	0.00	
9317.00†	89.864	0.510	7112.38	2344.31	2319.75	-399.00	40°08'43.673"N	104°41'47.408"W	0.00	
9417.00†	89.864	0.510	7112.62	2443.91	2419.74	-398.11	40°08'44.661"N	104°41'47.396"W	0.00	
9517.00†	89.864	0.510	7112.86	2543.51	2519.74	-397.22	40°08'45.649"N	104°41'47.385"W	0.00	
9617.00†	89.864	0.510	7113.10	2643.11	2619.73	-396.33	40°08'46.637"N	104°41'47.374"W	0.00	
9717.00†	89.864	0.510	7113.33	2742.71	2719.73	-395.44	40°08'47.626"N	104°41'47.362"W	0.00	
9817.00†	89.864	0.510	7113.57	2842.31	2819.73	-394.55	40°08'48.614"N	104°41'47.351"W	0.00	
9917.00†	89.864	0.510	7113.81	2941.91	2919.72	-393.66	40°08'49.602"N	104°41'47.339"W	0.00	
10017.00†	89.864	0.510	7114.04	3041.51	3019.72	-392.77	40°08'50.590"N	104°41'47.328"W	0.00	
10117.00†	89.864	0.510	7114.28	3141.11	3119.71	-391.88	40°08'51.578"N	104°41'47.316"W	0.00	
10217.00†	89.864	0.510	7114.52	3240.72	3219.71	-390.99	40°08'52.566"N	104°41'47.305"W	0.00	
10317.00†	89.864	0.510	7114.76	3340.32	3319.70	-390.10	40°08'53.555"N	104°41'47.294"W	0.00	
10417.00†	89.864	0.510	7114.99	3439.92	3419.70	-389.21	40°08'54.543"N	104°41'47.282"W	0.00	
10517.00†	89.864	0.510	7115.23	3539.52	3519.70	-388.32	40°08'55.531"N	104°41'47.271"W	0.00	
10617.00†	89.864	0.510	7115.47	3639.12	3619.69	-387.43	40°08'56.519"N	104°41'47.259"W	0.00	
10717.00†	89.864	0.510	7115.70	3738.72	3719.69	-386.54	40°08'57.507"N	104°41'47.248"W	0.00	
10817.00†	89.864	0.510	7115.94	3838.32	3819.68	-385.65	40°08'58.495"N	104°41'47.236"W	0.00	
10917.00†	89.864	0.510	7116.18	3937.92	3919.68	-384.76	40°08'59.484"N	104°41'47.225"W	0.00	
11017.00†	89.864	0.510	7116.42	4037.52	4019.67	-383.87	40°09'00.472"N	104°41'47.213"W	0.00	
11117.00†	89.864	0.510	7116.65	4137.12	4119.67	-382.98	40°09'01.460"N	104°41'47.202"W	0.00	
11217.00†	89.864	0.510	7116.89	4236.72	4219.67	-382.09	40°09'02.448"N	104°41'47.191"W	0.00	
11317.00†	89.864	0.510	7117.13	4336.33	4319.66	-381.20	40°09'03.436"N	104°41'47.179"W	0.00	
11417.00†	89.864	0.510	7117.36	4435.93	4419.66	-380.31	40°09'04.424"N	104°41'47.168"W	0.00	
11517.00†	89.864	0.510	7117.60	4535.53	4519.65	-379.42	40°09'05.413"N	104°41'47.156"W	0.00	
11617.00†	89.864	0.510	7117.84	4635.13	4619.65	-378.53	40°09'06.401"N	104°41'47.145"W	0.00	
11685.12	89.864	0.510	7118.00†	4702.97	4687.76	-377.92	40°09'07.074"N	104°41'47.137"W	0.00	End of Tangent (J)



Planned Wellpath Report

MELBON 12N-8HZ (PERMIT REV-B.0) PWP

Page 5 of 6



REFERENCE WELLPATH IDENTIFICATION

Operator	KERR-MCGEE OIL & GAS ONSHORE LP	Slot	SLOT#1 MELBON 12N-8HZ (2500' FNL & 635' FWL, SEC.17)
Area	COLORADO	Well	MELBON 12N-8HZ
Field	WELD COUNTY (KERR MCGEE)	Wellbore	MELBON 12N-8HZ PWB
Facility	SEC.17-T2N-R65W		

HOLE & CASING SECTIONS - Ref Wellbore: MELBON 12N-8HZ PWB Ref Wellpath: MELBON 12N-8HZ (PERMIT REV-B.0) PWP

String/Diameter	Start MD [ft]	End MD [ft]	Interval [ft]	Start TVD [ft]	End TVD [ft]	Start N/S [ft]	Start E/W [ft]	End N/S [ft]	End E/W [ft]
13.5in Open Hole	17.00	1035.00	1018.00	17.00	1035.00	0.00	0.00	0.00	0.00
9.625in Casing	17.00	1035.00	1018.00	17.00	1035.00	0.00	0.00	0.00	0.00
8.75in Open Hole	1035.00	7468.95	6433.95	1035.00	7108.00	0.00	0.00	471.78	-415.45
7in Casing	17.00	7468.95	7451.95	17.00	7108.00	0.00	0.00	471.78	-415.45
6.125in Open Hole	7468.95	11685.12	4216.17	7108.00	7118.00	471.78	-415.45	4687.76	-377.92
4.5in Casing Production	17.00	11685.12	11668.12	17.00	7118.00	0.00	0.00	4687.76	-377.92

TARGETS

Name	MD [ft]	TVD [ft]	North [ft]	East [ft]	Grid East [US ft]	Grid North [US ft]	Latitude	Longitude	Shape
SECTION 17 E/W MIDLINE		6.00	0.91	364.64	3225404.19	1294542.21	40°08'20.758"N	104°41'37.575"W	polygon
SECTION 17 LINES		6.00	0.91	364.64	3225404.19	1294542.21	40°08'20.758"N	104°41'37.575"W	polygon
SECTION 17 N/S MIDLINE		6.00	0.91	364.64	3225404.19	1294542.21	40°08'20.758"N	104°41'37.575"W	polygon
SECTION 8 & 17 HARDLINES (460' SETBACKS)		6.00	0.91	364.64	3225404.20	1294542.20	40°08'20.758"N	104°41'37.575"W	polygon
SECTION 8 E/W MIDLINE		6.00	0.91	364.64	3225404.19	1294542.21	40°08'20.758"N	104°41'37.575"W	polygon
SECTION 8 LINES		6.00	0.91	364.64	3225404.19	1294542.21	40°08'20.758"N	104°41'37.575"W	polygon
SECTION 8 N/S MIDLINE		6.00	0.91	364.64	3225404.19	1294542.21	40°08'20.758"N	104°41'37.575"W	polygon
1) MEBON 12N-8HZ BHL ON PLAT (2188' FSL & 215' FWL)		7118.00	4687.78	-377.92	3224619.15	1299221.94	40°09'07.074"N	104°41'47.137"W	point

SURVEY PROGRAM - Ref Wellbore: MELBON 12N-8HZ PWB Ref Wellpath: MELBON 12N-8HZ (PERMIT REV-B.0) PWP

Start MD [ft]	End MD [ft]	Positional Uncertainty Model	Log Name/Comment	Wellbore
17.00	7468.95	NaviTrak (Standard)		MELBON 12N-8HZ PWB
7468.95	11685.12	OnTrak (Standard)		MELBON 12N-8HZ PWB



Planned Wellpath Report
MELBON 12N-8HZ (PERMIT REV-B.0) PWP
Page 6 of 6



REFERENCE WELLPATH IDENTIFICATION

Operator	KERR-MCGEE OIL & GAS ONSHORE LP	Slot	SLOT#1 MELBON 12N-8HZ (2500' FNL & 635' FWL, SEC.17)
Area	COLORADO	Well	MELBON 12N-8HZ
Field	WELD COUNTY (KERR MCGEE)	Wellbore	MELBON 12N-8HZ PWB
Facility	SEC.17-T2N-R65W		

WELLPATH COMMENTS

MD [ft]	Inclination [°]	Azimuth [°]	TVD [ft]	Comment
4044.21	2.871	256.650	4009.00	PARKMAN
4638.27	0.000	0.510	4603.00	SUSSEX
7082.99	51.268	0.510	6982.00	SHARON SPRINGS
7203.51	63.320	0.510	7047.00	NIOBRARA A
7269.00	69.869	0.510	7073.00	NIOBRARA B