

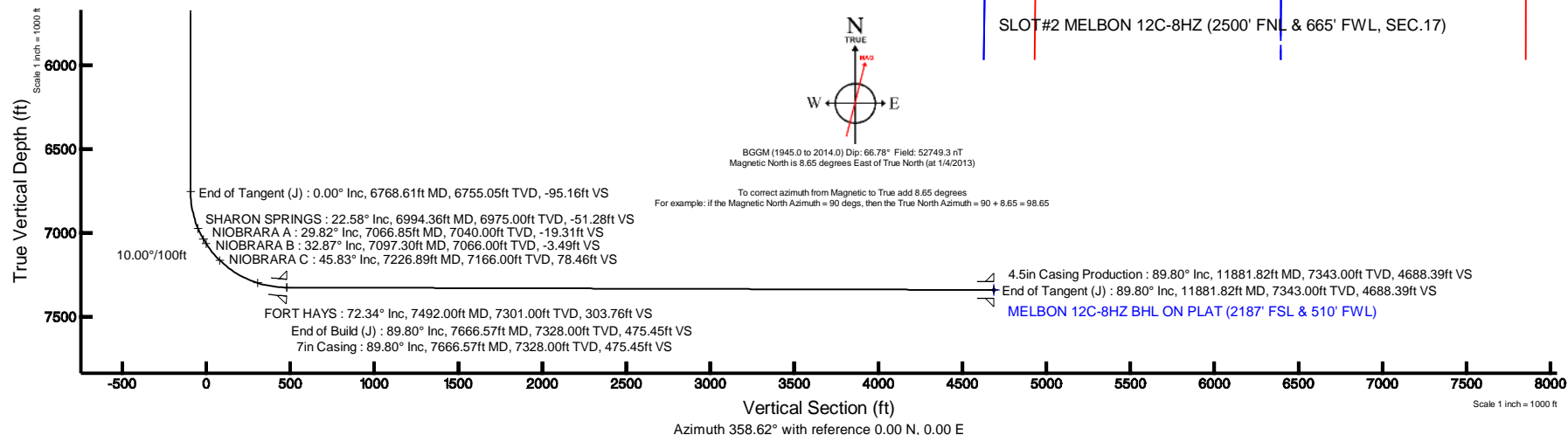
Location:	COLORADO	Slot:	SLOT#2 MELBON 12C-8HZ (2500' FNL & 665' FWL, SEC.17)
Field:	WELD COUNTY (KERR MCGEE)	Well:	MELBON 12C-8HZ
Facility:	SEC.17-T2N-R65W	Wellbore:	MELBON 12C-8HZ PWB

Plot reference wellpath is MELBON 12C-8HZ (PERMIT REV-B.0) PWP	
True vertical depths are referenced to Rig on SLO7K2 MELBON 12C-8HZ (2499 FNL & 1035' FWL) (RT)	Grid System: NAD83 / Lambert Colorado SP, Northern Zone (501), US feet
Measured depths are referenced to Rig on SLO7K2 MELBON 12C-8HZ (2499 FNL & 1035' FWL) (RT)	North Reference: True north
Rig on SLO7K2 MELBON 12C-8HZ (2499 FNL & 1035' FWL) (RT) to Mean Sea Level: 4972 feet	Scale: True distance
Mean Sea Level to Mud line (At Slot: SLO7K2 MELBON 12C-8HZ (2500 FNL & 665' FWL, SEC. 17): 0 feet	Depths are in feet
Coordinates are in feet referenced to Slot	
Created by: wilsjef02 on 4/20/13	

Facility Name				Grid East (US ft)	Grid North (US ft)	Latitude	Longitude
SEC 17-T2N-R65W				322549.555	1294541.951	40°08'20.755"N	104°41'37.506"W
Stk	Local N (ft)	Local E (ft)	Grid East (US ft)	Grid North (US ft)	Latitude	Longitude	
SLOT#2 MELBON 120-B#2 (2500 F#4 & 666' P#AL, SEC.17)	-0.60	-340.10	3225069.494	1294638.255	40°08'20.749"N	104°41'41.885"W	
Rig on SLOT#2 MELBON 120-B#2 (2499 F#4 & 1035' P#AL) (RT) to Mud line (At Slot: SLOT#2 MELBON 120-B#2 (2500 F#4 & 666' P#AL, SEC.17))						4972ft	
Mean Sea Level to Mud line (At Slot: SLOT#2 MELBON 120-B#2 (2500 F#4 & 666' P#AL, SEC.17))							0ft
Rig on SLOT#2 MELBON 120-B#2 (2499 F#4 & 1035' P#AL) (RT) to Mean Sea Level						4972ft	

Design Comment	MD (ft)	Inc (°)	Az (°)	TVD (ft)	Local N (ft)	Local E (ft)	DLS (°/100ft)	VS (ft)
Tie On	17.00	0.000	237.500	17.00	0.00	0.00	0.00	0.00
End of Tangent	1400.00	0.000	237.500	1400.00	0.00	0.00	0.00	0.00
End of Build (J)	1900.00	10.000	237.500	1897.47	-23.38	-36.71	2.00	-22.49
End of Tangent (J)	2459.03	10.000	237.500	2448.00	-75.54	-118.58	0.00	-72.66
End of Drop (J)	2959.03	0.000	0.507	2945.47	-98.93	-155.28	2.00	-95.16
End of Tangent (J)	6768.61	0.000	0.507	6755.05	-98.93	-155.28	0.00	-95.16
End of Build (J)	7666.57	89.796	0.507	7328.00	471.97	-150.23	10.00	475.45
End of Tangent (J)	11881.82	89.796	0.507	7343.00	4687.03	-112.93	0.00	4688.39

Name	MD (ft)	TVD (ft)	Local N (ft)	Local E (ft)	Grid East (US ft)	Grid North (US ft)	Latitude	Longitude
SECTION 17 E/W MIDLINE		6.00	0.91	334.74	3225404.19	1294542.21	40°08'20.758"N	104°41'37.575"W
SECTION 17 LINES		6.00	0.91	334.74	3225404.19	1294542.21	40°08'20.758"N	104°41'37.575"W
SECTION 17 N/S MIDLINE		6.00	0.91	334.74	3225404.19	1294542.21	40°08'20.758"N	104°41'37.575"W
SECTION 8 & 17 HARDLINES (460' SETBACKS)		6.00	0.91	334.74	3225404.20	1294542.20	40°08'20.758"N	104°41'37.575"W
SECTION 8 E/W MIDLINE		6.00	0.91	334.74	3225404.19	1294542.21	40°08'20.758"N	104°41'37.575"W
SECTION 8 LINES		6.00	0.91	334.74	3225404.19	1294542.21	40°08'20.758"N	104°41'37.575"W
SECTION 8 N/S MIDLINE		6.00	0.91	334.74	3225404.19	1294542.21	40°08'20.758"N	104°41'37.575"W
MELBON 12C-8H2 BHL ON PLAT (2187 FSL & 510' FWL)	7343.00	4687.05	-112.92	3242914.04	1299223.89	40°09'07.087"N	104°41'43.338"W	





Planned Wellpath Report

MELBON 12C-8HZ (PERMIT REV-B.0) PWP

Page 1 of 6



REFERENCE WELLPATH IDENTIFICATION

Operator	KERR-MCGEE OIL & GAS ONSHORE LP	Slot	SLOT#2 MELBON 12C-8HZ (2500' FNL & 665' FWL, SEC.17)
Area	COLORADO	Well	MELBON 12C-8HZ
Field	WELD COUNTY (KERR MCGEE)	Wellbore	MELBON 12C-8HZ PWB
Facility	SEC.17-T2N-R65W		

REPORT SETUP INFORMATION

Projection System	NAD83 / Lambert Colorado SP, Northern Zone (501), US feet	Software System	WellArchitect® 3.0.2
North Reference	True	User	Wilsjef02
Scale	0.999959	Report Generated	1/4/2013 at 10:11:00
Convergence at slot	0.52° East	Database/Source file	WellArchitectDB/MELBON_12C-8HZ_PWB.xml

WELLPATH LOCATION

	Local coordinates		Grid coordinates		Geographic coordinates	
	North[ft]	East[ft]	Easting[US ft]	Northing[US ft]	Latitude	Longitude
Slot Location	-0.60	-340.10	3225069.49	1294538.26	40°08'20.749"N	104°41'41.885"W
Facility Reference Pt			3225409.56	1294541.95	40°08'20.755"N	104°41'37.506"W
Field Reference Pt			3197771.84	1268891.29	40°04'09.600"N	104°47'36.000"W

WELLPATH DATUM

Calculation method	Minimum curvature	Rig on SLOT#2 MELBON 12C-8HZ (2499' FNL & 1035' FWL) (RT) to Facility Vertical Datum
Horizontal Reference Pt	Slot	Rig on SLOT#2 MELBON 12C-8HZ (2499' FNL & 1035' FWL) (RT) to Mean Sea Level
Vertical Reference Pt	Rig on SLOT#2 MELBON 12C-8HZ (2499' FNL & 1035' FWL) (RT)	Rig on SLOT#2 MELBON 12C-8HZ (2499' FNL & 1035' FWL) (RT) to Mud Line at Slot (SLOT#2 MELBON 12C-8HZ (2500' FNL & 665' FWL, SEC.17))
MD Reference Pt	Rig on SLOT#2 MELBON 12C-8HZ (2499' FNL & 1035' FWL) (RT)	Section Origin
Field Vertical Reference	Mean Sea Level	Section Azimuth

REFERENCE WELLPATH IDENTIFICATION

Operator	KERR-MCGEE OIL & GAS ONSHORE LP	Slot	SLOT#2 MELBON 12C-8HZ (2500' FNL & 665' FWL, SEC.17)
Area	COLORADO	Well	MELBON 12C-8HZ
Field	WELD COUNTY (KERR MCGEE)	Wellbore	MELBON 12C-8HZ PWB
Facility	SEC.17-T2N-R65W		

WELLPATH DATA (134 stations) † = interpolated/extrapolated station

MD [ft]	Inclination [°]	Azimuth [°]	TVD [ft]	Vert Sect [ft]	North [ft]	East [ft]	Latitude	Longitude	DLS [°/100ft]	Comments
0.00†	0.000	237.500	0.00	0.00	0.00	0.00	40°08'20.749"N	104°41'41.885"W	0.00	
17.00	0.000	237.500	17.00	0.00	0.00	0.00	40°08'20.749"N	104°41'41.885"W	0.00	Tie On
117.00†	0.000	237.500	117.00	0.00	0.00	0.00	40°08'20.749"N	104°41'41.885"W	0.00	
217.00†	0.000	237.500	217.00	0.00	0.00	0.00	40°08'20.749"N	104°41'41.885"W	0.00	
317.00†	0.000	237.500	317.00	0.00	0.00	0.00	40°08'20.749"N	104°41'41.885"W	0.00	
417.00†	0.000	237.500	417.00	0.00	0.00	0.00	40°08'20.749"N	104°41'41.885"W	0.00	
517.00†	0.000	237.500	517.00	0.00	0.00	0.00	40°08'20.749"N	104°41'41.885"W	0.00	
617.00†	0.000	237.500	617.00	0.00	0.00	0.00	40°08'20.749"N	104°41'41.885"W	0.00	
717.00†	0.000	237.500	717.00	0.00	0.00	0.00	40°08'20.749"N	104°41'41.885"W	0.00	
817.00†	0.000	237.500	817.00	0.00	0.00	0.00	40°08'20.749"N	104°41'41.885"W	0.00	
917.00†	0.000	237.500	917.00	0.00	0.00	0.00	40°08'20.749"N	104°41'41.885"W	0.00	
1017.00†	0.000	237.500	1017.00	0.00	0.00	0.00	40°08'20.749"N	104°41'41.885"W	0.00	
1117.00†	0.000	237.500	1117.00	0.00	0.00	0.00	40°08'20.749"N	104°41'41.885"W	0.00	
1217.00†	0.000	237.500	1217.00	0.00	0.00	0.00	40°08'20.749"N	104°41'41.885"W	0.00	
1317.00†	0.000	237.500	1317.00	0.00	0.00	0.00	40°08'20.749"N	104°41'41.885"W	0.00	
1400.00	0.000	237.500	1400.00	0.00	0.00	0.00	40°08'20.749"N	104°41'41.885"W	0.00	End of Tangent
1417.00†	0.340	237.500	1417.00	-0.03	-0.03	-0.04	40°08'20.749"N	104°41'41.886"W	2.00	
1517.00†	2.340	237.500	1516.97	-1.23	-1.28	-2.01	40°08'20.736"N	104°41'41.911"W	2.00	
1617.00†	4.340	237.500	1616.79	-4.25	-4.41	-6.93	40°08'20.705"N	104°41'41.974"W	2.00	
1717.00†	6.340	237.500	1716.35	-9.06	-9.41	-14.78	40°08'20.656"N	104°41'42.075"W	2.00	
1817.00†	8.340	237.500	1815.53	-15.66	-16.28	-25.55	40°08'20.588"N	104°41'42.214"W	2.00	
1900.00	10.000	237.500	1897.47	-22.49	-23.38	-36.71	40°08'20.518"N	104°41'42.358"W	2.00	End of Build (J)
1917.00†	10.000	237.500	1914.21	-24.02	-24.97	-39.20	40°08'20.502"N	104°41'42.390"W	0.00	
2017.00†	10.000	237.500	2012.69	-32.99	-34.30	-53.84	40°08'20.410"N	104°41'42.578"W	0.00	
2117.00†	10.000	237.500	2111.17	-41.97	-43.63	-68.49	40°08'20.318"N	104°41'42.767"W	0.00	
2217.00†	10.000	237.500	2209.65	-50.94	-52.96	-83.13	40°08'20.226"N	104°41'42.955"W	0.00	
2317.00†	10.000	237.500	2308.13	-59.92	-62.29	-97.78	40°08'20.133"N	104°41'43.144"W	0.00	
2417.00†	10.000	237.500	2406.61	-68.89	-71.62	-112.42	40°08'20.041"N	104°41'43.333"W	0.00	
2459.03	10.000	237.500	2448.00	-72.66	-75.54	-118.58	40°08'20.002"N	104°41'43.412"W	0.00	End of Tangent (J)
2517.00†	8.841	237.500	2505.19	-77.57	-80.64	-126.58	40°08'19.952"N	104°41'43.515"W	2.00	
2617.00†	6.841	237.500	2604.25	-84.62	-87.97	-138.09	40°08'19.880"N	104°41'43.663"W	2.00	
2717.00†	4.841	237.500	2703.73	-89.88	-93.44	-146.67	40°08'19.826"N	104°41'43.773"W	2.00	
2817.00†	2.841	237.500	2803.50	-93.34	-97.04	-152.32	40°08'19.790"N	104°41'43.846"W	2.00	
2917.00†	0.841	237.500	2903.44	-95.00	-98.76	-155.02	40°08'19.773"N	104°41'43.881"W	2.00	
2959.03	0.000	0.507	2945.47	-95.16	-98.93	-155.28	40°08'19.771"N	104°41'43.884"W	2.00	End of Drop (J)
3017.00†	0.000	0.507	3003.44	-95.16	-98.93	-155.28	40°08'19.771"N	104°41'43.884"W	0.00	
3117.00†	0.000	0.507	3103.44	-95.16	-98.93	-155.28	40°08'19.771"N	104°41'43.884"W	0.00	
3217.00†	0.000	0.507	3203.44	-95.16	-98.93	-155.28	40°08'19.771"N	104°41'43.884"W	0.00	
3317.00†	0.000	0.507	3303.44	-95.16	-98.93	-155.28	40°08'19.771"N	104°41'43.884"W	0.00	
3417.00†	0.000	0.507	3403.44	-95.16	-98.93	-155.28	40°08'19.771"N	104°41'43.884"W	0.00	
3517.00†	0.000	0.507	3503.44	-95.16	-98.93	-155.28	40°08'19.771"N	104°41'43.884"W	0.00	
3617.00†	0.000	0.507	3603.44	-95.16	-98.93	-155.28	40°08'19.771"N	104°41'43.884"W	0.00	
3717.00†	0.000	0.507	3703.44	-95.16	-98.93	-155.28	40°08'19.771"N	104°41'43.884"W	0.00	
3817.00†	0.000	0.507	3803.44	-95.16	-98.93	-155.28	40°08'19.771"N	104°41'43.884"W	0.00	
3917.00†	0.000	0.507	3903.44	-95.16	-98.93	-155.28	40°08'19.771"N	104°41'43.884"W	0.00	



Planned Wellpath Report

MELBON 12C-8HZ (PERMIT REV-B.0) PWP
Page 3 of 6



REFERENCE WELLPATH IDENTIFICATION

Operator	KERR-MCGEE OIL & GAS ONSHORE LP	Slot	SLOT#2 MELBON 12C-8HZ (2500' FNL & 665' FWL, SEC.17)
Area	COLORADO	Well	MELBON 12C-8HZ
Field	WELD COUNTY (KERR MCGEE)	Wellbore	MELBON 12C-8HZ PWB
Facility	SEC.17-T2N-R65W		

WELLPATH DATA (134 stations) † = interpolated/extrapolated station

MD [ft]	Inclination [°]	Azimuth [°]	TVD [ft]	Vert Sect [ft]	North [ft]	East [ft]	Latitude	Longitude	DLS [°/100ft]	Comments
4016.56†	0.000	0.507	4003.00	-95.16	-98.93	-155.28	40°08'19.771"N	104°41'43.884"W	0.00	PARKMAN
4017.00†	0.000	0.507	4003.44	-95.16	-98.93	-155.28	40°08'19.771"N	104°41'43.884"W	0.00	
4117.00†	0.000	0.507	4103.44	-95.16	-98.93	-155.28	40°08'19.771"N	104°41'43.884"W	0.00	
4217.00†	0.000	0.507	4203.44	-95.16	-98.93	-155.28	40°08'19.771"N	104°41'43.884"W	0.00	
4317.00†	0.000	0.507	4303.44	-95.16	-98.93	-155.28	40°08'19.771"N	104°41'43.884"W	0.00	
4417.00†	0.000	0.507	4403.44	-95.16	-98.93	-155.28	40°08'19.771"N	104°41'43.884"W	0.00	
4517.00†	0.000	0.507	4503.44	-95.16	-98.93	-155.28	40°08'19.771"N	104°41'43.884"W	0.00	
4610.56†	0.000	0.507	4597.00	-95.16	-98.93	-155.28	40°08'19.771"N	104°41'43.884"W	0.00	SUSSEX
4617.00†	0.000	0.507	4603.44	-95.16	-98.93	-155.28	40°08'19.771"N	104°41'43.884"W	0.00	
4717.00†	0.000	0.507	4703.44	-95.16	-98.93	-155.28	40°08'19.771"N	104°41'43.884"W	0.00	
4817.00†	0.000	0.507	4803.44	-95.16	-98.93	-155.28	40°08'19.771"N	104°41'43.884"W	0.00	
4917.00†	0.000	0.507	4903.44	-95.16	-98.93	-155.28	40°08'19.771"N	104°41'43.884"W	0.00	
5017.00†	0.000	0.507	5003.44	-95.16	-98.93	-155.28	40°08'19.771"N	104°41'43.884"W	0.00	
5117.00†	0.000	0.507	5103.44	-95.16	-98.93	-155.28	40°08'19.771"N	104°41'43.884"W	0.00	
5217.00†	0.000	0.507	5203.44	-95.16	-98.93	-155.28	40°08'19.771"N	104°41'43.884"W	0.00	
5317.00†	0.000	0.507	5303.44	-95.16	-98.93	-155.28	40°08'19.771"N	104°41'43.884"W	0.00	
5417.00†	0.000	0.507	5403.44	-95.16	-98.93	-155.28	40°08'19.771"N	104°41'43.884"W	0.00	
5517.00†	0.000	0.507	5503.44	-95.16	-98.93	-155.28	40°08'19.771"N	104°41'43.884"W	0.00	
5617.00†	0.000	0.507	5603.44	-95.16	-98.93	-155.28	40°08'19.771"N	104°41'43.884"W	0.00	
5717.00†	0.000	0.507	5703.44	-95.16	-98.93	-155.28	40°08'19.771"N	104°41'43.884"W	0.00	
5817.00†	0.000	0.507	5803.44	-95.16	-98.93	-155.28	40°08'19.771"N	104°41'43.884"W	0.00	
5917.00†	0.000	0.507	5903.44	-95.16	-98.93	-155.28	40°08'19.771"N	104°41'43.884"W	0.00	
6017.00†	0.000	0.507	6003.44	-95.16	-98.93	-155.28	40°08'19.771"N	104°41'43.884"W	0.00	
6117.00†	0.000	0.507	6103.44	-95.16	-98.93	-155.28	40°08'19.771"N	104°41'43.884"W	0.00	
6217.00†	0.000	0.507	6203.44	-95.16	-98.93	-155.28	40°08'19.771"N	104°41'43.884"W	0.00	
6317.00†	0.000	0.507	6303.44	-95.16	-98.93	-155.28	40°08'19.771"N	104°41'43.884"W	0.00	
6417.00†	0.000	0.507	6403.44	-95.16	-98.93	-155.28	40°08'19.771"N	104°41'43.884"W	0.00	
6517.00†	0.000	0.507	6503.44	-95.16	-98.93	-155.28	40°08'19.771"N	104°41'43.884"W	0.00	
6617.00†	0.000	0.507	6603.44	-95.16	-98.93	-155.28	40°08'19.771"N	104°41'43.884"W	0.00	
6717.00†	0.000	0.507	6703.44	-95.16	-98.93	-155.28	40°08'19.771"N	104°41'43.884"W	0.00	
6768.61	0.000	0.507	6755.05	-95.16	-98.93	-155.28	40°08'19.771"N	104°41'43.884"W	0.00	End of Tangent (J)
6817.00†	4.839	0.507	6803.38	-93.12	-96.88	-155.27	40°08'19.792"N	104°41'43.884"W	10.00	
6917.00†	14.839	0.507	6901.78	-76.06	-79.82	-155.12	40°08'19.960"N	104°41'43.882"W	10.00	
6994.36†	22.575	0.507	6975.00	-51.28	-55.03	-154.90	40°08'20.205"N	104°41'43.879"W	10.00	SHARON SPRINGS
7017.00†	24.839	0.507	6995.73	-42.18	-45.92	-154.82	40°08'20.295"N	104°41'43.878"W	10.00	
7066.85†	29.824	0.507	7040.00	-19.31	-23.05	-154.61	40°08'20.521"N	104°41'43.876"W	10.00	NIOBRARA A
7097.30†	32.869	0.507	7066.00	-3.49	-7.21	-154.47	40°08'20.678"N	104°41'43.874"W	10.00	NIOBRARA B
7117.00†	34.839	0.507	7082.36	7.48	3.77	-154.38	40°08'20.786"N	104°41'43.873"W	10.00	
7217.00†	44.839	0.507	7159.05	71.43	67.75	-153.81	40°08'21.418"N	104°41'43.865"W	10.00	
7226.89†	45.828	0.507	7166.00	78.46	74.78	-153.75	40°08'21.488"N	104°41'43.865"W	10.00	NIOBRARA C
7317.00†	54.839	0.507	7223.46	147.72	144.07	-153.13	40°08'22.173"N	104°41'43.857"W	10.00	
7417.00†	64.839	0.507	7273.64	234.02	230.42	-152.37	40°08'23.026"N	104°41'43.847"W	10.00	
7492.00†	72.339	0.507	7301.00	303.76	300.19	-151.75	40°08'23.716"N	104°41'43.839"W	10.00	FORT HAYS
7517.00†	74.839	0.507	7308.06	327.73	324.17	-151.54	40°08'23.952"N	104°41'43.836"W	10.00	
7617.00†	84.839	0.507	7325.68	425.98	422.47	-150.67	40°08'24.924"N	104°41'43.825"W	10.00	



Planned Wellpath Report

MELBON 12C-8HZ (PERMIT REV-B.0) PWP

Page 4 of 6



REFERENCE WELLPATH IDENTIFICATION

Operator	KERR-MCGEE OIL & GAS ONSHORE LP	Slot	SLOT#2 MELBON 12C-8HZ (2500' FNL & 665' FWL, SEC.17)
Area	COLORADO	Well	MELBON 12C-8HZ
Field	WELD COUNTY (KERR MCGEE)	Wellbore	MELBON 12C-8HZ PWB
Facility	SEC.17-T2N-R65W		

WELLPATH DATA (134 stations) † = interpolated/extrapolated station

MD [ft]	Inclination [°]	Azimuth [°]	TVD [ft]	Vert Sect [ft]	North [ft]	East [ft]	Latitude	Longitude	DLS [°/100ft]	Comments
7666.57	89.796	0.507	7328.00	475.45	471.97	-150.23	40°08'25.413"N	104°41'43.819"W	10.00	End of Build (J)
7717.00†	89.796	0.507	7328.18	525.85	522.40	-149.79	40°08'25.911"N	104°41'43.814"W	0.00	
7817.00†	89.796	0.507	7328.53	625.80	622.39	-148.90	40°08'26.900"N	104°41'43.802"W	0.00	
7917.00†	89.796	0.507	7328.89	725.75	722.39	-148.02	40°08'27.888"N	104°41'43.791"W	0.00	
8017.00†	89.796	0.507	7329.25	825.69	822.38	-147.13	40°08'28.876"N	104°41'43.780"W	0.00	
8117.00†	89.796	0.507	7329.60	925.64	922.38	-146.25	40°08'29.864"N	104°41'43.768"W	0.00	
8217.00†	89.796	0.507	7329.96	1025.58	1022.38	-145.36	40°08'30.852"N	104°41'43.757"W	0.00	
8317.00†	89.796	0.507	7330.31	1125.53	1122.37	-144.48	40°08'31.840"N	104°41'43.745"W	0.00	
8417.00†	89.796	0.507	7330.67	1225.47	1222.37	-143.59	40°08'32.829"N	104°41'43.734"W	0.00	
8517.00†	89.796	0.507	7331.03	1325.42	1322.36	-142.71	40°08'33.817"N	104°41'43.723"W	0.00	
8617.00†	89.796	0.507	7331.38	1425.36	1422.36	-141.82	40°08'34.805"N	104°41'43.711"W	0.00	
8717.00†	89.796	0.507	7331.74	1525.31	1522.35	-140.94	40°08'35.793"N	104°41'43.700"W	0.00	
8817.00†	89.796	0.507	7332.09	1625.25	1622.35	-140.05	40°08'36.781"N	104°41'43.688"W	0.00	
8917.00†	89.796	0.507	7332.45	1725.20	1722.34	-139.17	40°08'37.769"N	104°41'43.677"W	0.00	
9017.00†	89.796	0.507	7332.81	1825.14	1822.34	-138.28	40°08'38.758"N	104°41'43.666"W	0.00	
9117.00†	89.796	0.507	7333.16	1925.09	1922.33	-137.40	40°08'39.746"N	104°41'43.654"W	0.00	
9217.00†	89.796	0.507	7333.52	2025.03	2022.33	-136.51	40°08'40.734"N	104°41'43.643"W	0.00	
9317.00†	89.796	0.507	7333.87	2124.98	2122.33	-135.63	40°08'41.722"N	104°41'43.631"W	0.00	
9417.00†	89.796	0.507	7334.23	2224.92	2222.32	-134.74	40°08'42.710"N	104°41'43.620"W	0.00	
9517.00†	89.796	0.507	7334.58	2324.87	2322.32	-133.86	40°08'43.698"N	104°41'43.609"W	0.00	
9617.00†	89.796	0.507	7334.94	2424.81	2422.31	-132.97	40°08'44.686"N	104°41'43.597"W	0.00	
9717.00†	89.796	0.507	7335.30	2524.76	2522.31	-132.09	40°08'45.675"N	104°41'43.586"W	0.00	
9817.00†	89.796	0.507	7335.65	2624.70	2622.30	-131.21	40°08'46.663"N	104°41'43.575"W	0.00	
9917.00†	89.796	0.507	7336.01	2724.65	2722.30	-130.32	40°08'47.651"N	104°41'43.563"W	0.00	
10017.00†	89.796	0.507	7336.36	2824.59	2822.29	-129.44	40°08'48.639"N	104°41'43.552"W	0.00	
10117.00†	89.796	0.507	7336.72	2924.54	2922.29	-128.55	40°08'49.627"N	104°41'43.540"W	0.00	
10217.00†	89.796	0.507	7337.08	3024.48	3022.28	-127.67	40°08'50.615"N	104°41'43.529"W	0.00	
10317.00†	89.796	0.507	7337.43	3124.43	3122.28	-126.78	40°08'51.604"N	104°41'43.518"W	0.00	
10417.00†	89.796	0.507	7337.79	3224.37	3222.28	-125.90	40°08'52.592"N	104°41'43.506"W	0.00	
10517.00†	89.796	0.507	7338.14	3324.32	3322.27	-125.01	40°08'53.580"N	104°41'43.495"W	0.00	
10617.00†	89.796	0.507	7338.50	3424.26	3422.27	-124.13	40°08'54.568"N	104°41'43.483"W	0.00	
10717.00†	89.796	0.507	7338.85	3524.21	3522.26	-123.24	40°08'55.556"N	104°41'43.472"W	0.00	
10817.00†	89.796	0.507	7339.21	3624.15	3622.26	-122.36	40°08'56.544"N	104°41'43.461"W	0.00	
10917.00†	89.796	0.507	7339.57	3724.10	3722.25	-121.47	40°08'57.533"N	104°41'43.449"W	0.00	
11017.00†	89.796	0.507	7339.92	3824.04	3822.25	-120.59	40°08'58.521"N	104°41'43.438"W	0.00	
11117.00†	89.796	0.507	7340.28	3923.99	3922.24	-119.70	40°08'59.509"N	104°41'43.427"W	0.00	
11217.00†	89.796	0.507	7340.63	4023.93	4022.24	-118.82	40°09'00.497"N	104°41'43.415"W	0.00	
11317.00†	89.796	0.507	7340.99	4123.88	4122.23	-117.93	40°09'01.485"N	104°41'43.404"W	0.00	
11417.00†	89.796	0.507	7341.35	4223.82	4222.23	-117.05	40°09'02.473"N	104°41'43.392"W	0.00	
11517.00†	89.796	0.507	7341.70	4323.77	4322.23	-116.16	40°09'03.462"N	104°41'43.381"W	0.00	
11617.00†	89.796	0.507	7342.06	4423.71	4422.22	-115.28	40°09'04.450"N	104°41'43.370"W	0.00	
11717.00†	89.796	0.507	7342.41	4523.66	4522.22	-114.39	40°09'05.438"N	104°41'43.358"W	0.00	
11817.00†	89.796	0.507	7342.77	4623.60	4622.21	-113.51	40°09'06.426"N	104°41'43.347"W	0.00	
11881.82	89.796	0.507	7343.00†	4688.39	4687.03	-112.93	40°09'07.067"N	104°41'43.339"W	0.00	End of Tangent (J)



Planned Wellpath Report

MELBON 12C-8HZ (PERMIT REV-B.0) PWP

Page 5 of 6



REFERENCE WELLPATH IDENTIFICATION

Operator	KERR-MCGEE OIL & GAS ONSHORE LP	Slot	SLOT#2 MELBON 12C-8HZ (2500' FNL & 665' FWL, SEC.17)
Area	COLORADO	Well	MELBON 12C-8HZ
Field	WELD COUNTY (KERR MCGEE)	Wellbore	MELBON 12C-8HZ PWB
Facility	SEC.17-T2N-R65W		

HOLE & CASING SECTIONS - Ref Wellbore: MELBON 12C-8HZ PWB Ref Wellpath: MELBON 12C-8HZ (PERMIT REV-B.0) PWP

String/Diameter	Start MD [ft]	End MD [ft]	Interval [ft]	Start TVD [ft]	End TVD [ft]	Start N/S [ft]	Start E/W [ft]	End N/S [ft]	End E/W [ft]
13.5in Open Hole	17.00	1035.00	1018.00	17.00	1035.00	0.00	0.00	0.00	0.00
9.625in Casing	17.00	1035.00	1018.00	17.00	1035.00	0.00	0.00	0.00	0.00
8.75in Open Hole	1035.00	7666.57	6631.57	1035.00	7328.00	0.00	0.00	471.97	-150.23
7in Casing	17.00	7666.57	7649.57	17.00	7328.00	0.00	0.00	471.97	-150.23
6.125in Open Hole	7666.57	11881.82	4215.25	7328.00	7343.00	471.97	-150.23	4687.03	-112.93
4.5in Casing Production	17.00	11881.82	11864.82	17.00	7343.00	0.00	0.00	4687.03	-112.93

TARGETS

Name	MD [ft]	TVD [ft]	North [ft]	East [ft]	Grid East [US ft]	Grid North [US ft]	Latitude	Longitude	Shape
SECTION 17 E/W MIDLINE		6.00	0.91	334.74	3225404.19	1294542.21	40°08'20.758"N	104°41'37.575"W	polygon
SECTION 17 LINES		6.00	0.91	334.74	3225404.19	1294542.21	40°08'20.758"N	104°41'37.575"W	polygon
SECTION 17 N/S MIDLINE		6.00	0.91	334.74	3225404.19	1294542.21	40°08'20.758"N	104°41'37.575"W	polygon
SECTION 8 & 17 HARDLINES (460' SETBACKS)		6.00	0.91	334.74	3225404.20	1294542.20	40°08'20.758"N	104°41'37.575"W	polygon
SECTION 8 E/W MIDLINE		6.00	0.91	334.74	3225404.19	1294542.21	40°08'20.758"N	104°41'37.575"W	polygon
SECTION 8 LINES		6.00	0.91	334.74	3225404.19	1294542.21	40°08'20.758"N	104°41'37.575"W	polygon
SECTION 8 N/S MIDLINE		6.00	0.91	334.74	3225404.19	1294542.21	40°08'20.758"N	104°41'37.575"W	polygon
1) MELBON 12C-8HZ BHL ON PLAT (2187' FSL & 510' FWL)		7343.00	4687.05	-112.92	3224914.04	1299223.89	40°09'07.067"N	104°41'43.339"W	point

SURVEY PROGRAM - Ref Wellbore: MELBON 12C-8HZ PWB Ref Wellpath: MELBON 12C-8HZ (PERMIT REV-B.0) PWP

Start MD [ft]	End MD [ft]	Positional Uncertainty Model	Log Name/Comment	Wellbore
17.00	7666.57	NaviTrak (Standard)		MELBON 12C-8HZ PWB
7666.57	11881.82	OnTrak (Standard)		MELBON 12C-8HZ PWB



Planned Wellpath Report
MELBON 12C-8HZ (PERMIT REV-B.0) PWP
Page 6 of 6



REFERENCE WELLPATH IDENTIFICATION

Operator	KERR-MCGEE OIL & GAS ONSHORE LP	Slot	SLOT#2 MELBON 12C-8HZ (2500' FNL & 665' FWL, SEC.17)
Area	COLORADO	Well	MELBON 12C-8HZ
Field	WELD COUNTY (KERR MCGEE)	Wellbore	MELBON 12C-8HZ PWB
Facility	SEC.17-T2N-R65W		

WELLPATH COMMENTS

MD [ft]	Inclination [°]	Azimuth [°]	TVD [ft]	Comment
4016.56	0.000	0.507	4003.00	PARKMAN
4610.56	0.000	0.507	4597.00	SUSSEX
6994.36	22.575	0.507	6975.00	SHARON SPRINGS
7066.85	29.824	0.507	7040.00	NIOBRARA A
7097.30	32.869	0.507	7066.00	NIOBRARA B
7226.89	45.828	0.507	7166.00	NIOBRARA C
7492.00	72.339	0.507	7301.00	FORT HAYS