

Continental Resources, Inc.

Weld County, CO
Sec. 2-T7N-R60W
Buchner 2-2H

Plan B Rev 0

Plan: Plan B Rev 0 Proposed Permit Only

Sperry Drilling Services

Proposal Report

14 December, 2012

Well Coordinates: 1,465,984.24 N, 3,397,984.61 E (40° 36' 13.30" N, 104° 03' 59.96" W)

Ground Level: 4,934.00 usft

Local Coordinate Origin:

Centered on Site Sec. 2-T7N-R60W

Viewing Datum:

WELL @ 4954.0usft (Original Well Elev)

TVDs to System:

N

North Reference:

True

Unit System:

API - US Survey Feet

Geodetic Scale Factor Applied

Version: 5000.1 Build: 61

HALLIBURTON

Project: Weld County, CO
Site: Sec. 2-T7N-R60W
Well: Buchner 2-2H
Wellbore: Plan B Rev 0
Design: Plan B Rev 0 Proposed Permit Only

Continental Resources, Inc.

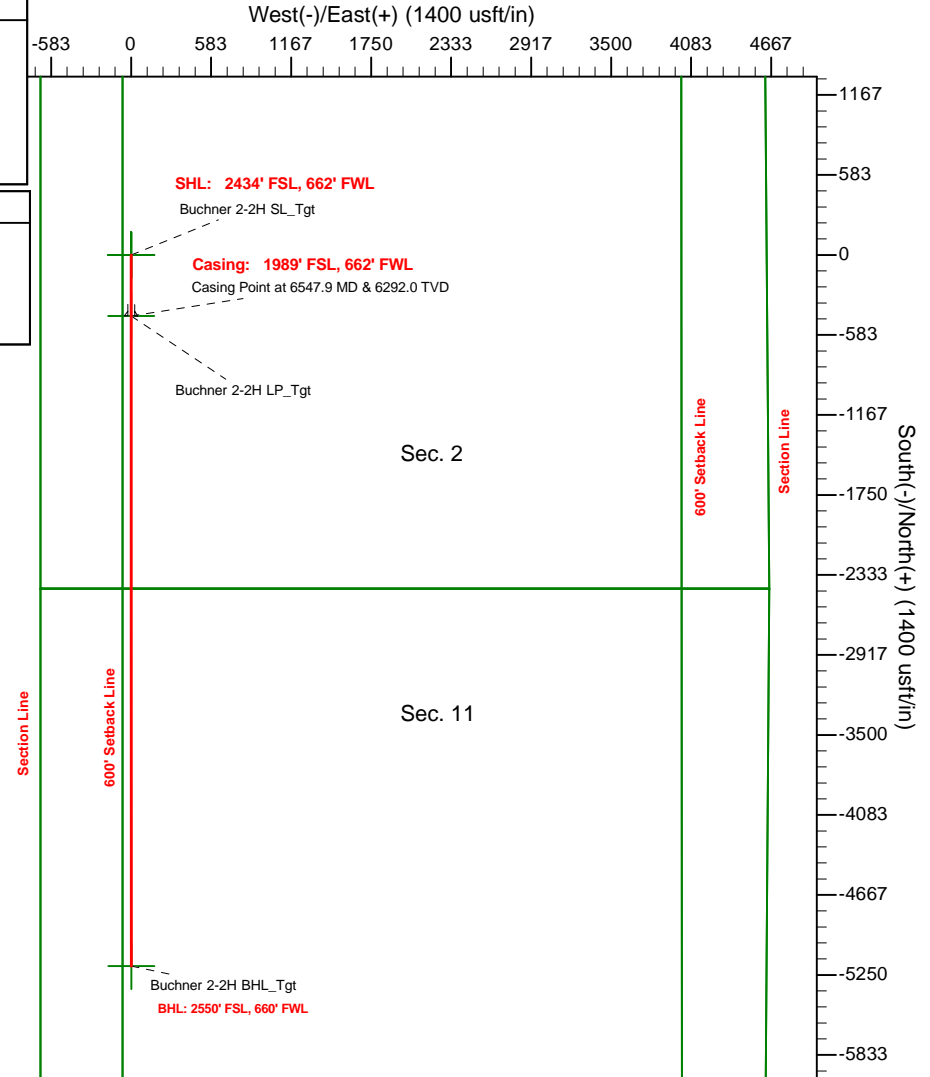
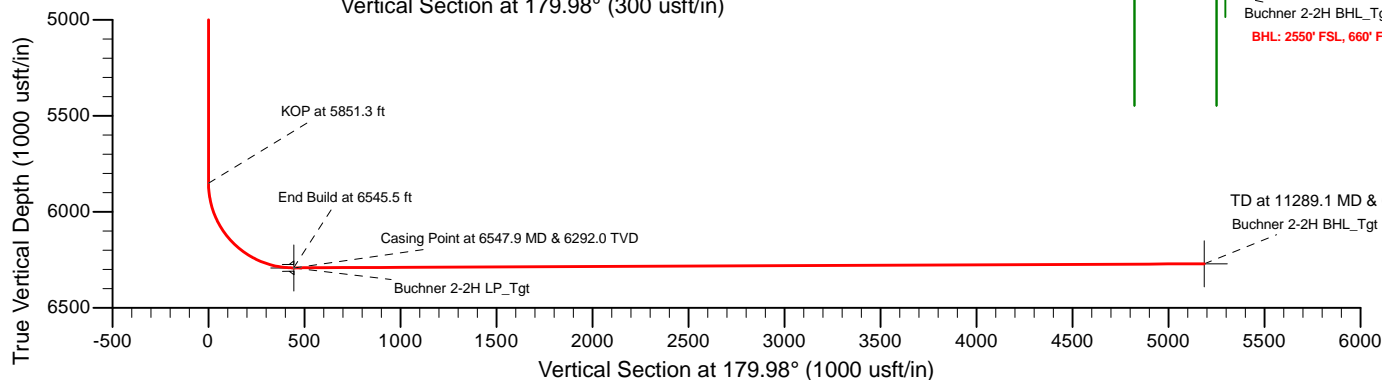
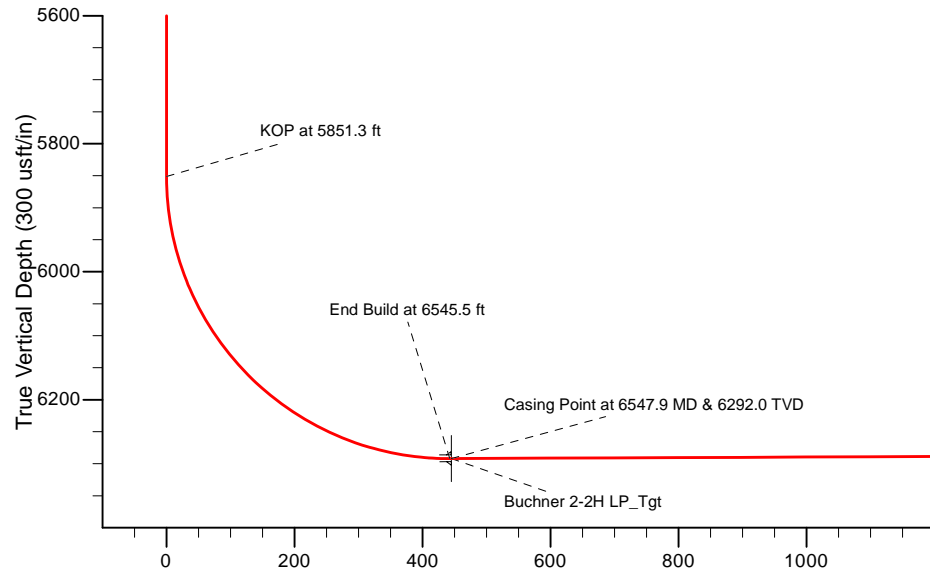
HALLIBURTON
Sperry Drilling

SECTION DETAILS

Sec	MD	Inc	Azi	TVD	+N/-S	+E/-W	Dleg	TFace	VSect	Target
1	0.0	0.00	0.00	0.0	0.0	0.0	0.00	0.00	0.0	
2	5851.3	0.00	0.00	5851.3	0.0	0.0	0.00	0.00	0.0	
3	6545.5	90.25	180.00	6292.0	-442.7	0.0	13.00	180.00	442.7	
4	6547.9	90.25	180.00	6292.0	-445.0	0.0	0.00	0.00	445.0	Buchner 2-2H LP_Tgt
5	6697.9	90.25	180.00	6291.4	-595.0	0.0	0.00	0.00	595.0	
6	6699.1	90.25	179.98	6291.4	-596.3	0.0	2.00	-80.49	596.3	
7	11289.1	90.25	179.98	6271.0	-5186.1	2.0	0.00	0.00	5186.1	Buchner 2-2H BHL_Tgt

WELLBORE TARGET DETAILS (MAP CO-ORDINATES AND LAT/LONG)

Name	TVD	+N/-S	+E/-W	Northing	Easting	Latitude	Longitude	Shape
Buchner 2-2H SL_Tgt	0.0	0.0	0.0	1465984.25	3397984.61	40° 36' 13.302 N	104° 3' 59.958 W	Point
Section 11 Lines	0.0	0.0	0.0	1465984.25	3397984.61	40° 36' 13.302 N	104° 3' 59.958 W	Polygon
Section 2 Lines	0.0	0.0	0.0	1465984.25	3397984.61	40° 36' 13.302 N	104° 3' 59.958 W	Polygon
Setback Lines	0.0	0.0	0.0	1465984.25	3397984.61	40° 36' 13.302 N	104° 3' 59.958 W	Polygon
Buchner 2-2H BHL_Tgt	6271.0	-5186.1	2.0	1460798.94	3398070.43	40° 35' 22.056 N	104° 3' 59.932 W	Point
Buchner 2-2H LP_Tgt	6292.0	-445.0	0.0	1465539.32	3397991.80	40° 36' 8.905 N	104° 3' 59.958 W	Point



WELL DETAILS: Buchner 2-2H

Ground Level:	4934.0
Northing	1465984.24
Easting	3397984.61
Latitude	40° 36' 13.302 N
Longitude	104° 3' 59.958 W

Plan B Rev 0 Proposed Permit Only (Buchner 2-2H)

Created By: Lacy Taylor Date: 12/14/2012

Checked: _____ Date: _____

Plan Report for Buchner 2-2H - Plan B Rev 0 Proposed Permit Only

Measured Depth (usft)	Inclination (°)	Azimuth (°)	Vertical Depth (usft)	+N/-S (usft)	+E/-W (usft)	Vertical Section (usft)	Dogleg Rate (°/100usft)	Build Rate (°/100usft)	Turn Rate (°/100usft)	Toolface Azimuth (°)
0.0	0.00	0.00	0.0	0.0	0.0	0.0	0.00	0.00	0.00	0.00
100.0	0.00	0.00	100.0	0.0	0.0	0.0	0.00	0.00	0.00	0.00
200.0	0.00	0.00	200.0	0.0	0.0	0.0	0.00	0.00	0.00	0.00
300.0	0.00	0.00	300.0	0.0	0.0	0.0	0.00	0.00	0.00	0.00
400.0	0.00	0.00	400.0	0.0	0.0	0.0	0.00	0.00	0.00	0.00
500.0	0.00	0.00	500.0	0.0	0.0	0.0	0.00	0.00	0.00	0.00
600.0	0.00	0.00	600.0	0.0	0.0	0.0	0.00	0.00	0.00	0.00
700.0	0.00	0.00	700.0	0.0	0.0	0.0	0.00	0.00	0.00	0.00
800.0	0.00	0.00	800.0	0.0	0.0	0.0	0.00	0.00	0.00	0.00
900.0	0.00	0.00	900.0	0.0	0.0	0.0	0.00	0.00	0.00	0.00
1,000.0	0.00	0.00	1,000.0	0.0	0.0	0.0	0.00	0.00	0.00	0.00
1,100.0	0.00	0.00	1,100.0	0.0	0.0	0.0	0.00	0.00	0.00	0.00
1,200.0	0.00	0.00	1,200.0	0.0	0.0	0.0	0.00	0.00	0.00	0.00
1,300.0	0.00	0.00	1,300.0	0.0	0.0	0.0	0.00	0.00	0.00	0.00
1,400.0	0.00	0.00	1,400.0	0.0	0.0	0.0	0.00	0.00	0.00	0.00
1,500.0	0.00	0.00	1,500.0	0.0	0.0	0.0	0.00	0.00	0.00	0.00
1,600.0	0.00	0.00	1,600.0	0.0	0.0	0.0	0.00	0.00	0.00	0.00
1,700.0	0.00	0.00	1,700.0	0.0	0.0	0.0	0.00	0.00	0.00	0.00
1,800.0	0.00	0.00	1,800.0	0.0	0.0	0.0	0.00	0.00	0.00	0.00
1,900.0	0.00	0.00	1,900.0	0.0	0.0	0.0	0.00	0.00	0.00	0.00
2,000.0	0.00	0.00	2,000.0	0.0	0.0	0.0	0.00	0.00	0.00	0.00
2,100.0	0.00	0.00	2,100.0	0.0	0.0	0.0	0.00	0.00	0.00	0.00
2,200.0	0.00	0.00	2,200.0	0.0	0.0	0.0	0.00	0.00	0.00	0.00
2,300.0	0.00	0.00	2,300.0	0.0	0.0	0.0	0.00	0.00	0.00	0.00
2,400.0	0.00	0.00	2,400.0	0.0	0.0	0.0	0.00	0.00	0.00	0.00
2,500.0	0.00	0.00	2,500.0	0.0	0.0	0.0	0.00	0.00	0.00	0.00
2,600.0	0.00	0.00	2,600.0	0.0	0.0	0.0	0.00	0.00	0.00	0.00
2,700.0	0.00	0.00	2,700.0	0.0	0.0	0.0	0.00	0.00	0.00	0.00
2,800.0	0.00	0.00	2,800.0	0.0	0.0	0.0	0.00	0.00	0.00	0.00
2,900.0	0.00	0.00	2,900.0	0.0	0.0	0.0	0.00	0.00	0.00	0.00
3,000.0	0.00	0.00	3,000.0	0.0	0.0	0.0	0.00	0.00	0.00	0.00
3,100.0	0.00	0.00	3,100.0	0.0	0.0	0.0	0.00	0.00	0.00	0.00
3,200.0	0.00	0.00	3,200.0	0.0	0.0	0.0	0.00	0.00	0.00	0.00
3,300.0	0.00	0.00	3,300.0	0.0	0.0	0.0	0.00	0.00	0.00	0.00
3,400.0	0.00	0.00	3,400.0	0.0	0.0	0.0	0.00	0.00	0.00	0.00
3,500.0	0.00	0.00	3,500.0	0.0	0.0	0.0	0.00	0.00	0.00	0.00
3,600.0	0.00	0.00	3,600.0	0.0	0.0	0.0	0.00	0.00	0.00	0.00
3,700.0	0.00	0.00	3,700.0	0.0	0.0	0.0	0.00	0.00	0.00	0.00
3,800.0	0.00	0.00	3,800.0	0.0	0.0	0.0	0.00	0.00	0.00	0.00
3,900.0	0.00	0.00	3,900.0	0.0	0.0	0.0	0.00	0.00	0.00	0.00
4,000.0	0.00	0.00	4,000.0	0.0	0.0	0.0	0.00	0.00	0.00	0.00
4,100.0	0.00	0.00	4,100.0	0.0	0.0	0.0	0.00	0.00	0.00	0.00
4,200.0	0.00	0.00	4,200.0	0.0	0.0	0.0	0.00	0.00	0.00	0.00
4,300.0	0.00	0.00	4,300.0	0.0	0.0	0.0	0.00	0.00	0.00	0.00
4,400.0	0.00	0.00	4,400.0	0.0	0.0	0.0	0.00	0.00	0.00	0.00
4,500.0	0.00	0.00	4,500.0	0.0	0.0	0.0	0.00	0.00	0.00	0.00
4,600.0	0.00	0.00	4,600.0	0.0	0.0	0.0	0.00	0.00	0.00	0.00
4,700.0	0.00	0.00	4,700.0	0.0	0.0	0.0	0.00	0.00	0.00	0.00
4,800.0	0.00	0.00	4,800.0	0.0	0.0	0.0	0.00	0.00	0.00	0.00
4,900.0	0.00	0.00	4,900.0	0.0	0.0	0.0	0.00	0.00	0.00	0.00
5,000.0	0.00	0.00	5,000.0	0.0	0.0	0.0	0.00	0.00	0.00	0.00
5,100.0	0.00	0.00	5,100.0	0.0	0.0	0.0	0.00	0.00	0.00	0.00
5,200.0	0.00	0.00	5,200.0	0.0	0.0	0.0	0.00	0.00	0.00	0.00
5,300.0	0.00	0.00	5,300.0	0.0	0.0	0.0	0.00	0.00	0.00	0.00
5,400.0	0.00	0.00	5,400.0	0.0	0.0	0.0	0.00	0.00	0.00	0.00
5,500.0	0.00	0.00	5,500.0	0.0	0.0	0.0	0.00	0.00	0.00	0.00
5,600.0	0.00	0.00	5,600.0	0.0	0.0	0.0	0.00	0.00	0.00	0.00
5,700.0	0.00	0.00	5,700.0	0.0	0.0	0.0	0.00	0.00	0.00	0.00
5,800.0	0.00	0.00	5,800.0	0.0	0.0	0.0	0.00	0.00	0.00	0.00

Plan Report for Buchner 2-2H - Plan B Rev 0 Proposed Permit Only

Measured Depth (usft)	Inclination (°)	Azimuth (°)	Vertical Depth (usft)	+N/-S (usft)	+E/-W (usft)	Vertical Section (usft)	Dogleg Rate (°/100usft)	Build Rate (°/100usft)	Turn Rate (°/100usft)	Toolface Azimuth (°)
5,851.3	0.00	0.00	5,851.3	0.0	0.0	0.0	0.00	0.00	0.00	0.00
KOP at 5851.3 ft										
5,875.0	3.08	180.00	5,875.0	-0.6	0.0	0.6	13.00	13.00	0.00	180.00
5,900.0	6.33	180.00	5,899.9	-2.7	0.0	2.7	13.00	13.00	0.00	0.00
5,925.0	9.58	180.00	5,924.7	-6.2	0.0	6.1	13.00	13.00	0.00	0.00
5,950.0	12.83	180.00	5,949.2	-11.0	0.0	11.0	13.00	13.00	0.00	0.00
5,975.0	16.08	180.00	5,973.4	-17.3	0.0	17.2	13.00	13.00	0.00	0.00
6,000.0	19.33	180.00	5,997.2	-24.9	0.0	24.8	13.00	13.00	0.00	0.00
6,025.0	22.58	180.00	6,020.5	-33.8	0.0	33.8	13.00	13.00	0.00	0.00
6,050.0	25.83	180.00	6,043.3	-44.0	0.0	44.0	13.00	13.00	0.00	0.00
6,075.0	29.08	180.00	6,065.5	-55.6	0.0	55.6	13.00	13.00	0.00	0.00
6,100.0	32.33	180.00	6,087.0	-68.3	0.0	68.3	13.00	13.00	0.00	0.00
6,125.0	35.58	180.00	6,107.7	-82.3	0.0	82.3	13.00	13.00	0.00	0.00
6,150.0	38.83	180.00	6,127.7	-97.4	0.0	97.4	13.00	13.00	0.00	0.00
6,175.0	42.08	180.00	6,146.7	-113.6	0.0	113.6	13.00	13.00	0.00	0.00
6,200.0	45.33	180.00	6,164.7	-130.9	0.0	130.9	13.00	13.00	0.00	0.00
6,225.0	48.58	180.00	6,181.8	-149.2	0.0	149.2	13.00	13.00	0.00	0.00
6,250.0	51.83	180.00	6,197.8	-168.4	0.0	168.4	13.00	13.00	0.00	0.00
6,275.0	55.08	180.00	6,212.7	-188.5	0.0	188.5	13.00	13.00	0.00	0.00
6,300.0	58.33	180.00	6,226.4	-209.4	0.0	209.3	13.00	13.00	0.00	0.00
6,325.0	61.58	180.00	6,238.9	-231.0	0.0	231.0	13.00	13.00	0.00	0.00
6,350.0	64.83	180.00	6,250.2	-253.3	0.0	253.3	13.00	13.00	0.00	0.00
6,375.0	68.08	180.00	6,260.2	-276.2	0.0	276.2	13.00	13.00	0.00	0.00
6,400.0	71.33	180.00	6,268.8	-299.7	0.0	299.7	13.00	13.00	0.00	0.00
6,425.0	74.58	180.00	6,276.2	-323.6	0.0	323.6	13.00	13.00	0.00	0.00
6,450.0	77.83	180.00	6,282.1	-347.8	0.0	347.8	13.00	13.00	0.00	0.00
6,475.0	81.08	180.00	6,286.7	-372.4	0.0	372.4	13.00	13.00	0.00	0.00
6,500.0	84.33	180.00	6,289.9	-397.2	0.0	397.2	13.00	13.00	0.00	0.00
6,525.0	87.58	180.00	6,291.6	-422.1	0.0	422.1	13.00	13.00	0.00	0.00
6,545.5	90.25	180.00	6,292.0	-442.7	0.0	442.7	13.00	13.00	0.00	0.00
End Build at 6545.5 ft										
6,547.9	90.25	180.00	6,292.0	-445.0	0.0	445.0	0.00	0.00	0.00	0.00
Casing Point at 6547.9 MD & 6292.0 TVD - 7"										
6,600.0	90.25	180.00	6,291.8	-497.1	0.0	497.1	0.00	0.00	0.00	0.00
6,697.9	90.25	180.00	6,291.4	-595.0	0.0	595.0	0.00	0.00	0.00	0.00
6,699.1	90.25	179.98	6,291.4	-596.3	0.0	596.3	2.00	0.33	-1.97	-80.49
6,800.0	90.25	179.98	6,290.9	-697.1	0.0	697.1	0.00	0.00	0.00	0.00
6,900.0	90.25	179.98	6,290.5	-797.1	0.1	797.1	0.00	0.00	0.00	0.00
7,000.0	90.25	179.98	6,290.0	-897.1	0.1	897.1	0.00	0.00	0.00	0.00
7,100.0	90.25	179.98	6,289.6	-997.1	0.2	997.1	0.00	0.00	0.00	0.00
7,200.0	90.25	179.98	6,289.1	-1,097.1	0.2	1,097.1	0.00	0.00	0.00	0.00
7,300.0	90.25	179.98	6,288.7	-1,197.1	0.3	1,197.1	0.00	0.00	0.00	0.00
7,400.0	90.25	179.98	6,288.3	-1,297.1	0.3	1,297.1	0.00	0.00	0.00	0.00
7,500.0	90.25	179.98	6,287.8	-1,397.1	0.3	1,397.1	0.00	0.00	0.00	0.00
7,600.0	90.25	179.98	6,287.4	-1,497.1	0.4	1,497.1	0.00	0.00	0.00	0.00
7,700.0	90.25	179.98	6,286.9	-1,597.1	0.4	1,597.1	0.00	0.00	0.00	0.00
7,800.0	90.25	179.98	6,286.5	-1,697.1	0.5	1,697.1	0.00	0.00	0.00	0.00
7,900.0	90.25	179.98	6,286.0	-1,797.1	0.5	1,797.1	0.00	0.00	0.00	0.00
8,000.0	90.25	179.98	6,285.6	-1,897.1	0.6	1,897.1	0.00	0.00	0.00	0.00
8,100.0	90.25	179.98	6,285.1	-1,997.1	0.6	1,997.1	0.00	0.00	0.00	0.00
8,200.0	90.25	179.98	6,284.7	-2,097.1	0.7	2,097.1	0.00	0.00	0.00	0.00
8,300.0	90.25	179.98	6,284.3	-2,197.1	0.7	2,197.1	0.00	0.00	0.00	0.00
8,400.0	90.25	179.98	6,283.8	-2,297.1	0.7	2,297.1	0.00	0.00	0.00	0.00
8,500.0	90.25	179.98	6,283.4	-2,397.1	0.8	2,397.1	0.00	0.00	0.00	0.00
8,600.0	90.25	179.98	6,282.9	-2,497.1	0.8	2,497.1	0.00	0.00	0.00	0.00
8,700.0	90.25	179.98	6,282.5	-2,597.1	0.9	2,597.1	0.00	0.00	0.00	0.00
8,800.0	90.25	179.98	6,282.0	-2,697.1	0.9	2,697.1	0.00	0.00	0.00	0.00
8,900.0	90.25	179.98	6,281.6	-2,797.1	1.0	2,797.1	0.00	0.00	0.00	0.00
9,000.0	90.25	179.98	6,281.2	-2,897.1	1.0	2,897.1	0.00	0.00	0.00	0.00

Plan Report for Buchner 2-2H - Plan B Rev 0 Proposed Permit Only

Measured Depth (usft)	Inclination (°)	Azimuth (°)	Vertical Depth (usft)	+N/-S (usft)	+E/-W (usft)	Vertical Section (usft)	Dogleg Rate (°/100usft)	Build Rate (°/100usft)	Turn Rate (°/100usft)	Toolface Azimuth (°)
9,100.0	90.25	179.98	6,280.7	-2,997.1	1.0	2,997.1	0.00	0.00	0.00	0.00
9,200.0	90.25	179.98	6,280.3	-3,097.1	1.1	3,097.1	0.00	0.00	0.00	0.00
9,300.0	90.25	179.98	6,279.8	-3,197.1	1.1	3,197.1	0.00	0.00	0.00	0.00
9,400.0	90.25	179.98	6,279.4	-3,297.1	1.2	3,297.1	0.00	0.00	0.00	0.00
9,500.0	90.25	179.98	6,278.9	-3,397.1	1.2	3,397.1	0.00	0.00	0.00	0.00
9,600.0	90.25	179.98	6,278.5	-3,497.1	1.3	3,497.1	0.00	0.00	0.00	0.00
9,700.0	90.25	179.98	6,278.0	-3,597.1	1.3	3,597.1	0.00	0.00	0.00	0.00
9,800.0	90.25	179.98	6,277.6	-3,697.1	1.4	3,697.1	0.00	0.00	0.00	0.00
9,900.0	90.25	179.98	6,277.2	-3,797.1	1.4	3,797.1	0.00	0.00	0.00	0.00
10,000.0	90.25	179.98	6,276.7	-3,897.1	1.4	3,897.1	0.00	0.00	0.00	0.00
10,100.0	90.25	179.98	6,276.3	-3,997.1	1.5	3,997.1	0.00	0.00	0.00	0.00
10,200.0	90.25	179.98	6,275.8	-4,097.1	1.5	4,097.1	0.00	0.00	0.00	0.00
10,300.0	90.25	179.98	6,275.4	-4,197.1	1.6	4,197.1	0.00	0.00	0.00	0.00
10,400.0	90.25	179.98	6,274.9	-4,297.1	1.6	4,297.1	0.00	0.00	0.00	0.00
10,500.0	90.25	179.98	6,274.5	-4,397.1	1.7	4,397.1	0.00	0.00	0.00	0.00
10,600.0	90.25	179.98	6,274.1	-4,497.1	1.7	4,497.1	0.00	0.00	0.00	0.00
10,700.0	90.25	179.98	6,273.6	-4,597.1	1.7	4,597.1	0.00	0.00	0.00	0.00
10,800.0	90.25	179.98	6,273.2	-4,697.1	1.8	4,697.1	0.00	0.00	0.00	0.00
10,900.0	90.25	179.98	6,272.7	-4,797.1	1.8	4,797.1	0.00	0.00	0.00	0.00
11,000.0	90.25	179.98	6,272.3	-4,897.1	1.9	4,897.1	0.00	0.00	0.00	0.00
11,100.0	90.25	179.98	6,271.8	-4,997.1	1.9	4,997.1	0.00	0.00	0.00	0.00
11,200.0	90.25	179.98	6,271.4	-5,097.1	2.0	5,097.1	0.00	0.00	0.00	0.00
11,289.1	90.25	179.98	6,271.0	-5,186.1	2.0	5,186.1	0.00	0.00	0.00	0.00

TD at 11289.1 MD & 6271.0 TVD

Plan Annotations

Measured Depth (usft)	Vertical Depth (usft)	Local Coordinates +N/-S (usft)	+E/-W (usft)	Comment
5,851.3	5,851.3	0.0	0.0	KOP at 5851.3 ft
6,545.5	6,292.0	-442.7	0.0	End Build at 6545.5 ft
6,547.9	6,292.0	-445.0	0.0	Casing Point at 6547.9 MD & 6292.0 TVD
11,289.1	6,271.0	-5,186.1	2.0	TD at 11289.1 MD & 6271.0 TVD

Vertical Section Information

Angle Type	Target	Azimuth (°)	Origin Type	Origin +N/_S (usft)	+E/-W (usft)	Start TVD (usft)
TD	No Target (Freehand)	179.98	Slot	0.0	0.0	0.0

Survey tool program

From (usft)	To (usft)	Survey/Plan	Survey Tool
0.0	11,288.8	Plan B Rev 0 Proposed Permit Only	MWD

Casing Details

Measured Depth (usft)	Vertical Depth (usft)	Name	Casing Diameter (")	Hole Diameter (")
6,547.9	6,292.0	7"	7	7-1/2

Plan Report for Buchner 2-2H - Plan B Rev 0 Proposed Permit Only

Targets associated with this wellbore

Target Name	TVD (usft)	+N/-S (usft)	+E/-W (usft)	Shape
Buchner 2-2H BHL_Tgt	6,271.0	-5,186.1	2.0	Point
Section 11 Lines	0.0	0.0	0.0	Polygon
Buchner 2-2H SL_Tgt	0.0	0.0	0.0	Point
Buchner 2-2H LP_Tgt	6,292.0	-445.0	0.0	Point
Setback Lines	0.0	0.0	0.0	Polygon
Section 2 Lines	0.0	0.0	0.0	Polygon

North Reference Sheet for Sec. 2-T7N-R60W - Buchner 2-2H - Plan B Rev 0

All data is in US Feet unless otherwise stated. Directions and Coordinates are relative to True North Reference.

Vertical Depths are relative to WELL @ 4954.0usft (Original Well Elev). Northing and Easting are relative to Sec. 2-T7N-R60W

Coordinate System is US State Plane 1983, Colorado Northern Zone using datum North American Datum 1983, ellipsoid GRS 1980

Projection method is Lambert Conformal Conic (2 parallel)

Central Meridian is -105.50°, Longitude Origin:0° 0' 0.000 E°, Latitude Origin:40° 47' 0.000 N°

False Easting: 3,000,000.00usft, False Northing: 1,000,000.00usft, Scale Reduction: 0.99997578

Grid Coordinates of Well: 1,465,984.24 usft N, 3,397,984.61 usft E

Geographical Coordinates of Well: 40° 36' 13.30" N, 104° 03' 59.96" W

Grid Convergence at Surface is: 0.93°

Based upon Minimum Curvature type calculations, at a Measured Depth of 11,289.06usft the Bottom Hole Displacement is 5,186.14usft in the Direction of 179.98° (True).

Magnetic Convergence at surface is: -7.37° (13 December 2012, , IGRF2010)

