

# KERR-MCGEE OIL & GAS ONSHORE LP

Location: COLORADO Slot: SLOT#4 MELBON 19C-8HZ ( 2499' FNL & 1095' FWL, SEC.17)  
Field: WELD COUNTY (KERR MCGEE) Well: MELBON 19C-8HZ  
Facility: SEC.17-T2N-R65W Wellbore: MELBON 19C-8HZ PWB

Plot reference wellpath is MELBON 19C-8HZ (PERMIT) PWB

True vertical depths are referenced to Rig on SLOT#4 MELBON 19C-8HZ ( 2499' FNL & 1095' FWL) (RT)	Grid System: NAD83 / Lambert Colorado SP, Northern Zone (501), US feet
Measured depths are referenced to Rig on SLOT#4 MELBON 19C-8HZ ( 2499' FNL & 1095' FWL) (RT)	North Reference: True north
Rig on SLOT#4 MELBON 19C-8HZ ( 2499' FNL & 1095' FWL) (RT) to Mean Sea Level: 4966 feet	Scale: True distance
Mean Sea Level to Mud line (At Slot: SLOT#4 MELBON 19C-8HZ ( 2499' FNL & 1095' FWL, SEC.17): 0 feet	Depths are in feet
Coordinates are in feet referenced to Slot	Created by: marqanto on 10/17/2012

## Location Information

Facility Name			Grid East (US ft)	Grid North (US ft)	Latitude	Longitude
SEC.17-T2N-R65W			3225409.555	1294541.951	40°08'20.755"N	104°41'37.526"W
Slot	Local N (ft)	Local E (ft)	Grid East (US ft)	Grid North (US ft)	Latitude	Longitude
SLOT#4 MELBON 19C-8HZ ( 2499' FNL & 1095' FWL, SEC.17)	0.20	90.01	3225409.560	1294542.972	40°08'20.757"N	104°41'36.347"W
Rig on SLOT#4 MELBON 19C-8HZ ( 2499' FNL & 1095' FWL) (RT) to Mud line (At Slot: SLOT#4 MELBON 19C-8HZ ( 2499' FNL & 1095' FWL, SEC.17))					4966ft	
Mean Sea Level to Mud line (At Slot: SLOT#4 MELBON 19C-8HZ ( 2499' FNL & 1095' FWL, SEC.17))					0ft	
Rig on SLOT#4 MELBON 19C-8HZ ( 2499' FNL & 1095' FWL) (RT) to Mean Sea Level					4966ft	

## Survey Program

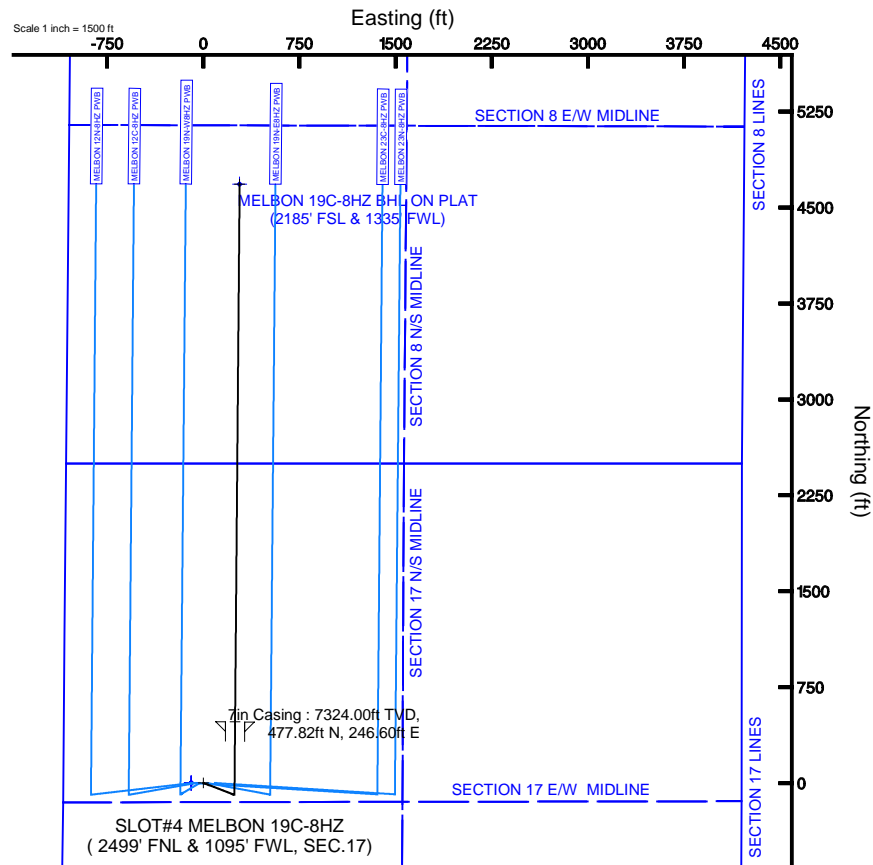
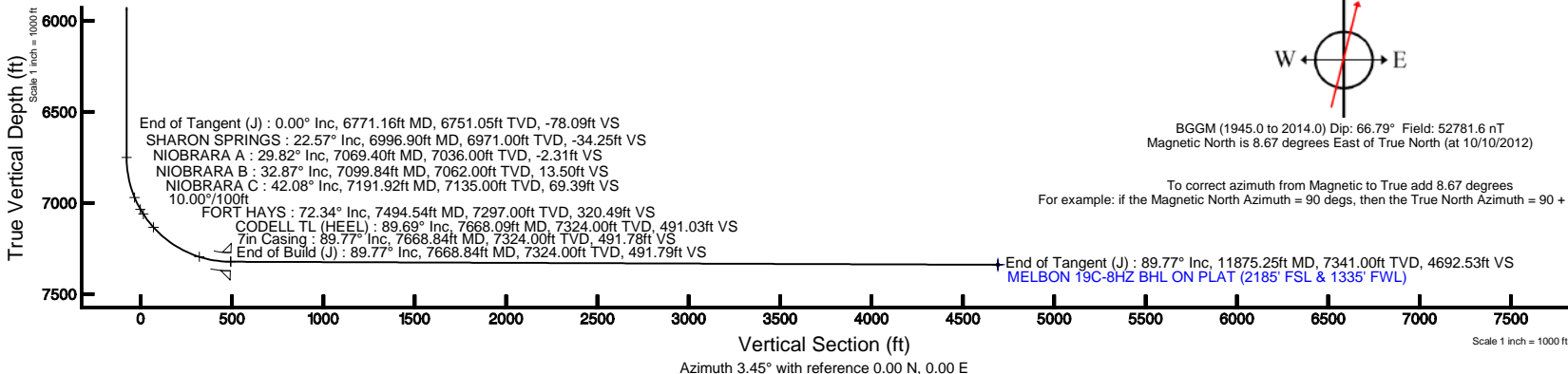
Start MD (ft)	End MD (ft)	Tool	Model	Log Name/Comment	Wellbore
17.00	7668.84	Navitrak	Navitrak (Standard)		MELBON 19C-8HZ PWB
7668.84	11875.25	OnTrak	OnTrak (Standard)		MELBON 19C-8HZ PWB

## Well Profile Data

Design Comment	MD (ft)	Inc (°)	Az (°)	TVD (ft)	Local N (ft)	Local E (ft)	DLS (°/100ft)	VS (ft)
Tie On	17.00	0.000	111.000	17.00	0.00	0.00	0.00	0.00
End of Tangent	1400.00	0.000	111.000	1400.00	0.00	0.00	0.00	0.00
End of Build (J)	1900.00	10.000	111.000	1897.47	-15.60	40.63	2.00	-13.12
End of Tangent (J)	2890.00	10.000	111.000	2872.43	-77.20	201.13	0.00	-64.97
End of Drop (J)	3390.00	0.000	0.486	3369.89	-92.80	241.76	2.00	-78.09
End of Tangent (J)	6771.16	0.000	0.486	6751.05	-92.80	241.76	0.00	-78.09
End of Build (J)	7668.84	89.768	0.486	7324.00	477.82	246.60	10.00	491.79
End of Tangent (J)	11875.25	89.768	0.486	7341.00	4684.04	282.26	0.00	4692.53

## Targets

Name	MD (ft)	TVD (ft)	Local N (ft)	Local E (ft)	Grid East (US ft)	Grid North (US ft)	Latitude	Longitude
SECTION 17 E/W MIDLINE		0.00	0.10	-95.37	3225404.19	1294542.21	40°08'20.758"N	104°41'37.575"W
SECTION 17 LINES		0.00	0.10	-95.37	3225404.19	1294542.21	40°08'20.758"N	104°41'37.575"W
SECTION 17 N/S MIDLINE		0.00	0.10	-95.37	3225404.19	1294542.21	40°08'20.758"N	104°41'37.575"W
SECTION 8 E/W MIDLINE		0.00	0.10	-95.37	3225404.19	1294542.21	40°08'20.758"N	104°41'37.575"W
SECTION 8 LINES		0.00	0.10	-95.37	3225404.19	1294542.21	40°08'20.758"N	104°41'37.575"W
SECTION 8 N/S MIDLINE		0.00	0.10	-95.37	3225404.19	1294542.21	40°08'20.758"N	104°41'37.575"W
MELBON 19C-8HZ BHL ON PLAT (2185' FSL & 1335' FWL)	11875.25	7341.00	4684.04	282.26	3225736.19	1299229.18	40°09'07.045"N	104°41'32.712"W



BGGM (1945.0 to 2014.0) Dip: 66.79° Field: 52781.6 nT  
Magnetic North is 8.67 degrees East of True North (at 10/10/2012)

To correct azimuth from Magnetic to True add 8.67 degrees  
For example: if the Magnetic North Azimuth = 90 degs, then the True North Azimuth = 90 + 8.67 = 98.67



## Planned Wellpath Report

MELBON 19C-8HZ (PERMIT) PWP  
Page 1 of 5



REFERENCE WELLPATH IDENTIFICATION		
Operator	KERR-MCGEE OIL & GAS ONSHORE LP	Slot
Area	COLORADO	Well
Field	WELD COUNTY (KERR MCGEE)	Wellbore
Facility	SEC.17-T2N-R65W	

REPORT SETUP INFORMATION			
Projection System	NAD83 / Lambert Colorado SP, Northern Zone (501), US feet	Software System	WellArchitect® 3.0.2
North Reference	True	User	Marqantc
Scale	0.999959	Report Generated	10/17/2012 at 11:10:34 AM
Convergence at slot	0.52° East	Database/Source file	W_Anadarko/MELBON_19C-8HZ_PWB.xml

WELLPATH LOCATION						
	Local coordinates		Grid coordinates		Geographic coordinates	
	North[ft]	East[ft]	Easting[US ft]	Northing[US ft]	Latitude	Longitude
Slot Location	0.20	90.01	3225499.56	1294542.97	40°08'20.757"N	104°41'36.347"W
Facility Reference Pt			3225409.56	1294541.95	40°08'20.755"N	104°41'37.506"W
Field Reference Pt			3197771.84	1268891.29	40°04'09.600"N	104°47'36.000"W

WELLPATH DATUM		
Calculation method	Minimum curvature	Rig on SLOT#4 MELBON 19C-8HZ ( 2499' FNL & 1095' FWL) (RT) to Facility Vertical Datum
Horizontal Reference Pt	Slot	Rig on SLOT#4 MELBON 19C-8HZ ( 2499' FNL & 1095' FWL) (RT) to Mean Sea Level
Vertical Reference Pt	Rig on SLOT#4 MELBON 19C-8HZ ( 2499' FNL & 1095' FWL) (RT)	Rig on SLOT#4 MELBON 19C-8HZ ( 2499' FNL & 1095' FWL) (RT) to Mud Line at Slot (SLOT#4 MELBON 19C-8HZ)
MD Reference Pt	Rig on SLOT#4 MELBON 19C-8HZ ( 2499' FNL & 1095' FWL) (RT)	Section Origin
Field Vertical Reference	Mean Sea Level	Section Azimuth



# Planned Wellpath Report

MELBON 19C-8HZ (PERMIT) PWP

Page 2 of 5



REFERENCE WELLPATH IDENTIFICATION			
Operator	KERR-MCGEE OIL & GAS ONSHORE LP	Slot	SLOT#4 MELBON 19C-8HZ ( 2499' FNL & 1095' FWL, SEC.17)
Area	COLORADO	Well	MELBON 19C-8HZ
Field	WELD COUNTY (KERR MCGEE)	Wellbore	MELBON 19C-8HZ PWB
Facility	SEC.17-T2N-R65W		

WELLPATH DATA (135 stations) † = interpolated/extrapolated station										
MD [ft]	Inclination [°]	Azimuth [°]	TVD [ft]	Vert Sect [ft]	North [ft]	East [ft]	Latitude	Longitude	DLS [°/100ft]	Comments
0.00†	0.000	111.000	0.00	0.00	0.00	0.00	40°08'20.757"N	104°41'36.347"W	0.00	
17.00	0.000	111.000	17.00	0.00	0.00	0.00	40°08'20.757"N	104°41'36.347"W	0.00	Tie On
117.00†	0.000	111.000	117.00	0.00	0.00	0.00	40°08'20.757"N	104°41'36.347"W	0.00	
217.00†	0.000	111.000	217.00	0.00	0.00	0.00	40°08'20.757"N	104°41'36.347"W	0.00	
317.00†	0.000	111.000	317.00	0.00	0.00	0.00	40°08'20.757"N	104°41'36.347"W	0.00	
417.00†	0.000	111.000	417.00	0.00	0.00	0.00	40°08'20.757"N	104°41'36.347"W	0.00	
517.00†	0.000	111.000	517.00	0.00	0.00	0.00	40°08'20.757"N	104°41'36.347"W	0.00	
617.00†	0.000	111.000	617.00	0.00	0.00	0.00	40°08'20.757"N	104°41'36.347"W	0.00	
717.00†	0.000	111.000	717.00	0.00	0.00	0.00	40°08'20.757"N	104°41'36.347"W	0.00	
817.00†	0.000	111.000	817.00	0.00	0.00	0.00	40°08'20.757"N	104°41'36.347"W	0.00	
917.00†	0.000	111.000	917.00	0.00	0.00	0.00	40°08'20.757"N	104°41'36.347"W	0.00	
1017.00†	0.000	111.000	1017.00	0.00	0.00	0.00	40°08'20.757"N	104°41'36.347"W	0.00	
1117.00†	0.000	111.000	1117.00	0.00	0.00	0.00	40°08'20.757"N	104°41'36.347"W	0.00	
1217.00†	0.000	111.000	1217.00	0.00	0.00	0.00	40°08'20.757"N	104°41'36.347"W	0.00	
1317.00†	0.000	111.000	1317.00	0.00	0.00	0.00	40°08'20.757"N	104°41'36.347"W	0.00	
1400.00	0.000	111.000	1400.00	0.00	0.00	0.00	40°08'20.757"N	104°41'36.347"W	0.00	End of Tangent
1417.00†	0.340	111.000	1417.00	-0.02	-0.02	0.05	40°08'20.757"N	104°41'36.346"W	2.00	
1517.00†	2.340	111.000	1516.97	-0.72	-0.86	2.23	40°08'20.749"N	104°41'36.318"W	2.00	
1617.00†	4.340	111.000	1616.79	-2.48	-2.94	7.67	40°08'20.728"N	104°41'36.248"W	2.00	
1717.00†	6.340	111.000	1716.35	-5.28	-6.28	16.36	40°08'20.695"N	104°41'36.136"W	2.00	
1817.00†	8.340	111.000	1815.53	-9.14	-10.86	28.28	40°08'20.650"N	104°41'35.983"W	2.00	
1900.00	10.000	111.000	1897.47	-13.12	-15.60	40.63	40°08'20.603"N	104°41'35.824"W	2.00	End of Build (I)
1917.00†	10.000	111.000	1914.21	-14.02	-16.66	43.39	40°08'20.592"N	104°41'35.788"W	0.00	
2017.00†	10.000	111.000	2012.69	-19.25	-22.88	59.60	40°08'20.531"N	104°41'35.580"W	0.00	
2117.00†	10.000	111.000	2111.17	-24.49	-29.10	75.81	40°08'20.469"N	104°41'35.371"W	0.00	
2217.00†	10.000	111.000	2209.65	-29.72	-35.32	92.02	40°08'20.408"N	104°41'35.162"W	0.00	
2317.00†	10.000	111.000	2308.13	-34.96	-41.55	108.23	40°08'20.346"N	104°41'34.953"W	0.00	
2417.00†	10.000	111.000	2406.61	-40.20	-47.77	124.45	40°08'20.285"N	104°41'34.745"W	0.00	
2517.00†	10.000	111.000	2505.09	-45.43	-53.99	140.66	40°08'20.223"N	104°41'34.536"W	0.00	
2617.00†	10.000	111.000	2603.57	-50.67	-60.22	156.87	40°08'20.162"N	104°41'34.327"W	0.00	
2717.00†	10.000	111.000	2702.05	-55.91	-66.44	173.08	40°08'20.100"N	104°41'34.118"W	0.00	
2817.00†	10.000	111.000	2800.53	-61.14	-72.66	189.29	40°08'20.039"N	104°41'33.910"W	0.00	
2890.00	10.000	111.000	2872.43	-64.97	-77.20	201.13	40°08'19.994"N	104°41'33.757"W	0.00	End of Tangent (J)
2917.00†	9.460	111.000	2899.04	-66.34	-78.84	205.39	40°08'19.978"N	104°41'33.703"W	2.00	
3017.00†	7.460	111.000	2997.94	-70.78	-84.11	219.12	40°08'19.926"N	104°41'33.526"W	2.00	
3117.00†	5.460	111.000	3097.30	-74.17	-88.14	229.62	40°08'19.886"N	104°41'33.390"W	2.00	
3217.00†	3.460	111.000	3197.00	-76.52	-90.93	236.88	40°08'19.858"N	104°41'33.297"W	2.00	
3317.00†	1.460	111.000	3296.90	-77.81	-92.47	240.89	40°08'19.843"N	104°41'33.245"W	2.00	
3390.00	0.000	0.486	3369.89	-78.09	-92.80	241.76	40°08'19.840"N	104°41'33.234"W	2.00	End of Drop (J)
3417.00†	0.000	0.486	3396.89	-78.09	-92.80	241.76	40°08'19.840"N	104°41'33.234"W	0.00	
3517.00†	0.000	0.486	3496.89	-78.09	-92.80	241.76	40°08'19.840"N	104°41'33.234"W	0.00	
3617.00†	0.000	0.486	3596.89	-78.09	-92.80	241.76	40°08'19.840"N	104°41'33.234"W	0.00	
3717.00†	0.000	0.486	3696.89	-78.09	-92.80	241.76	40°08'19.840"N	104°41'33.234"W	0.00	
3817.00†	0.000	0.486	3796.89	-78.09	-92.80	241.76	40°08'19.840"N	104°41'33.234"W	0.00	
3917.00†	0.000	0.486	3896.89	-78.09	-92.80	241.76	40°08'19.840"N	104°41'33.234"W	0.00	



## Planned Wellpath Report

MELBON 19C-8HZ (PERMIT) PWP  
Page 3 of 5



### REFERENCE WELLPATH IDENTIFICATION

Operator	KERR-MCGEE OIL & GAS ONSHORE LP	Slot	SLOT#4 MELBON 19C-8HZ ( 2499' FNL & 1095' FWL, SEC.17)
Area	COLORADO	Well	MELBON 19C-8HZ
Field	WELD COUNTY (KERR MCGEE)	Wellbore	MELBON 19C-8HZ PWB
Facility	SEC.17-T2N-R65W		

### WELLPATH DATA (135 stations) † = interpolated/extrapolated station

MD [ft]	Inclination [°]	Azimuth [°]	TVD [ft]	Vert Sect [ft]	North [ft]	East [ft]	Latitude	Longitude	DLS [°/100ft]	Comments
4017.00†	0.000	0.486	3996.89	-78.09	-92.80	241.76	40°08'19.840"N	104°41'33.234"W	0.00	
4019.11†	0.000	0.486	3999.00	-78.09	-92.80	241.76	40°08'19.840"N	104°41'33.234"W	0.00	PARKMAN
4117.00†	0.000	0.486	4096.89	-78.09	-92.80	241.76	40°08'19.840"N	104°41'33.234"W	0.00	
4217.00†	0.000	0.486	4196.89	-78.09	-92.80	241.76	40°08'19.840"N	104°41'33.234"W	0.00	
4317.00†	0.000	0.486	4296.89	-78.09	-92.80	241.76	40°08'19.840"N	104°41'33.234"W	0.00	
4417.00†	0.000	0.486	4396.89	-78.09	-92.80	241.76	40°08'19.840"N	104°41'33.234"W	0.00	
4517.00†	0.000	0.486	4496.89	-78.09	-92.80	241.76	40°08'19.840"N	104°41'33.234"W	0.00	
4613.11†	0.000	0.486	4593.00	-78.09	-92.80	241.76	40°08'19.840"N	104°41'33.234"W	0.00	SUSSEX
4617.00†	0.000	0.486	4596.89	-78.09	-92.80	241.76	40°08'19.840"N	104°41'33.234"W	0.00	
4717.00†	0.000	0.486	4696.89	-78.09	-92.80	241.76	40°08'19.840"N	104°41'33.234"W	0.00	
4817.00†	0.000	0.486	4796.89	-78.09	-92.80	241.76	40°08'19.840"N	104°41'33.234"W	0.00	
4917.00†	0.000	0.486	4896.89	-78.09	-92.80	241.76	40°08'19.840"N	104°41'33.234"W	0.00	
5017.00†	0.000	0.486	4996.89	-78.09	-92.80	241.76	40°08'19.840"N	104°41'33.234"W	0.00	
5117.00†	0.000	0.486	5096.89	-78.09	-92.80	241.76	40°08'19.840"N	104°41'33.234"W	0.00	
5217.00†	0.000	0.486	5196.89	-78.09	-92.80	241.76	40°08'19.840"N	104°41'33.234"W	0.00	
5317.00†	0.000	0.486	5296.89	-78.09	-92.80	241.76	40°08'19.840"N	104°41'33.234"W	0.00	
5417.00†	0.000	0.486	5396.89	-78.09	-92.80	241.76	40°08'19.840"N	104°41'33.234"W	0.00	
5517.00†	0.000	0.486	5496.89	-78.09	-92.80	241.76	40°08'19.840"N	104°41'33.234"W	0.00	
5617.00†	0.000	0.486	5596.89	-78.09	-92.80	241.76	40°08'19.840"N	104°41'33.234"W	0.00	
5717.00†	0.000	0.486	5696.89	-78.09	-92.80	241.76	40°08'19.840"N	104°41'33.234"W	0.00	
5817.00†	0.000	0.486	5796.89	-78.09	-92.80	241.76	40°08'19.840"N	104°41'33.234"W	0.00	
5917.00†	0.000	0.486	5896.89	-78.09	-92.80	241.76	40°08'19.840"N	104°41'33.234"W	0.00	
6017.00†	0.000	0.486	5996.89	-78.09	-92.80	241.76	40°08'19.840"N	104°41'33.234"W	0.00	
6117.00†	0.000	0.486	6096.89	-78.09	-92.80	241.76	40°08'19.840"N	104°41'33.234"W	0.00	
6217.00†	0.000	0.486	6196.89	-78.09	-92.80	241.76	40°08'19.840"N	104°41'33.234"W	0.00	
6317.00†	0.000	0.486	6296.89	-78.09	-92.80	241.76	40°08'19.840"N	104°41'33.234"W	0.00	
6417.00†	0.000	0.486	6396.89	-78.09	-92.80	241.76	40°08'19.840"N	104°41'33.234"W	0.00	
6517.00†	0.000	0.486	6496.89	-78.09	-92.80	241.76	40°08'19.840"N	104°41'33.234"W	0.00	
6617.00†	0.000	0.486	6596.89	-78.09	-92.80	241.76	40°08'19.840"N	104°41'33.234"W	0.00	
6717.00†	0.000	0.486	6696.89	-78.09	-92.80	241.76	40°08'19.840"N	104°41'33.234"W	0.00	
6771.16	0.000	0.486	6751.05	-78.09	-92.80	241.76	40°08'19.840"N	104°41'33.234"W	0.00	End of Tangent (J)
6817.00†	4.584	0.486	6796.84	-76.26	-90.97	241.77	40°08'19.858"N	104°41'33.234"W	10.00	
6917.00†	14.584	0.486	6895.32	-59.66	-74.34	241.91	40°08'20.022"N	104°41'33.232"W	10.00	
6996.90†	22.574	0.486	6971.00	-34.25	-48.90	242.13	40°08'20.274"N	104°41'33.229"W	10.00	SHARON SPRINGS
7017.00†	24.584	0.486	6989.42	-26.22	-40.87	242.20	40°08'20.353"N	104°41'33.229"W	10.00	
7069.40†	29.824	0.486	7036.00	-2.31	-16.92	242.40	40°08'20.590"N	104°41'33.226"W	10.00	NIOBRARA A
7099.84†	32.868	0.486	7062.00	13.50	-1.09	242.53	40°08'20.746"N	104°41'33.224"W	10.00	NIOBRARA B
7117.00†	34.584	0.486	7076.27	23.02	8.44	242.62	40°08'20.840"N	104°41'33.223"W	10.00	
7191.92†	42.076	0.486	7135.00	69.39	54.87	243.01	40°08'21.299"N	104°41'33.218"W	10.00	NIOBRARA C
7217.00†	44.584	0.486	7153.24	86.57	72.08	243.16	40°08'21.469"N	104°41'33.216"W	10.00	
7317.00†	54.584	0.486	7217.99	162.51	148.11	243.80	40°08'22.221"N	104°41'33.208"W	10.00	
7417.00†	64.584	0.486	7268.55	248.52	234.24	244.53	40°08'23.072"N	104°41'33.198"W	10.00	
7494.54†	72.338	0.486	7297.00	320.49	306.30	245.14	40°08'23.784"N	104°41'33.191"W	10.00	FORT HAYS
7517.00†	74.584	0.486	7303.39	342.00	327.83	245.32	40°08'23.997"N	104°41'33.188"W	10.00	
7617.00†	84.584	0.486	7321.45	440.09	426.06	246.16	40°08'24.967"N	104°41'33.177"W	10.00	



## Planned Wellpath Report

MELBON 19C-8HZ (PERMIT) PWP  
Page 4 of 5



REFERENCE WELLPATH IDENTIFICATION			
Operator	KERR-MCGEE OIL & GAS ONSHORE LP	Slot	SLOT#4 MELBON 19C-8HZ ( 2499' FNL & 1095' FWL, SEC.17)
Area	COLORADO	Well	MELBON 19C-8HZ
Field	WELD COUNTY (KERR MCGEE)	Wellbore	MELBON 19C-8HZ PWB
Facility	SEC.17-T2N-R65W		

WELLPATH DATA (135 stations) † = interpolated/extrapolated station										
MD [ft]	Inclination [°]	Azimuth [°]	TVD [ft]	Vert Sect [ft]	North [ft]	East [ft]	Latitude	Longitude	DLS [°/100ft]	Comments
7668.09†	89.693	0.486	7324.00	491.03	477.06	246.59	40°08'25.471"N	104°41'33.172"W	10.00	CODELL TL (HEEL)
7668.84	89.768	0.486	7324.00	491.79	477.82	246.60	40°08'25.479"N	104°41'33.172"W	10.00	End of Build (J)
7717.00†	89.768	0.486	7324.20	539.88	525.97	247.00	40°08'25.955"N	104°41'33.167"W	0.00	
7817.00†	89.768	0.486	7324.60	639.74	625.97	247.85	40°08'26.943"N	104°41'33.156"W	0.00	
7917.00†	89.768	0.486	7325.01	739.61	725.96	248.70	40°08'27.931"N	104°41'33.145"W	0.00	
8017.00†	89.768	0.486	7325.41	839.47	825.96	249.55	40°08'28.919"N	104°41'33.134"W	0.00	
8117.00†	89.768	0.486	7325.81	939.34	925.96	250.39	40°08'29.907"N	104°41'33.123"W	0.00	
8217.00†	89.768	0.486	7326.22	1039.21	1025.95	251.24	40°08'30.896"N	104°41'33.112"W	0.00	
8317.00†	89.768	0.486	7326.62	1139.07	1125.95	252.09	40°08'31.884"N	104°41'33.101"W	0.00	
8417.00†	89.768	0.486	7327.03	1238.94	1225.94	252.94	40°08'32.872"N	104°41'33.090"W	0.00	
8517.00†	89.768	0.486	7327.43	1338.80	1325.94	253.79	40°08'33.860"N	104°41'33.079"W	0.00	
8617.00†	89.768	0.486	7327.83	1438.67	1425.93	254.63	40°08'34.848"N	104°41'33.068"W	0.00	
8717.00†	89.768	0.486	7328.24	1538.53	1525.93	255.48	40°08'35.836"N	104°41'33.057"W	0.00	
8817.00†	89.768	0.486	7328.64	1638.40	1625.92	256.33	40°08'36.825"N	104°41'33.046"W	0.00	
8917.00†	89.768	0.486	7329.05	1738.26	1725.92	257.18	40°08'37.813"N	104°41'33.035"W	0.00	
9017.00†	89.768	0.486	7329.45	1838.13	1825.92	258.03	40°08'38.801"N	104°41'33.024"W	0.00	
9117.00†	89.768	0.486	7329.85	1938.00	1925.91	258.87	40°08'39.789"N	104°41'33.014"W	0.00	
9217.00†	89.768	0.486	7330.26	2037.86	2025.91	259.72	40°08'40.777"N	104°41'33.003"W	0.00	
9317.00†	89.768	0.486	7330.66	2137.73	2125.90	260.57	40°08'41.765"N	104°41'32.992"W	0.00	
9417.00†	89.768	0.486	7331.07	2237.59	2225.90	261.42	40°08'42.753"N	104°41'32.981"W	0.00	
9517.00†	89.768	0.486	7331.47	2337.46	2325.89	262.26	40°08'43.742"N	104°41'32.970"W	0.00	
9617.00†	89.768	0.486	7331.88	2437.32	2425.89	263.11	40°08'44.730"N	104°41'32.959"W	0.00	
9717.00†	89.768	0.486	7332.28	2537.19	2525.89	263.96	40°08'45.718"N	104°41'32.948"W	0.00	
9817.00†	89.768	0.486	7332.68	2637.05	2625.88	264.81	40°08'46.706"N	104°41'32.937"W	0.00	
9917.00†	89.768	0.486	7333.09	2736.92	2725.88	265.66	40°08'47.694"N	104°41'32.926"W	0.00	
10017.00†	89.768	0.486	7333.49	2836.79	2825.87	266.50	40°08'48.682"N	104°41'32.915"W	0.00	
10117.00†	89.768	0.486	7333.90	2936.65	2925.87	267.35	40°08'49.671"N	104°41'32.904"W	0.00	
10217.00†	89.768	0.486	7334.30	3036.52	3025.86	268.20	40°08'50.659"N	104°41'32.893"W	0.00	
10317.00†	89.768	0.486	7334.70	3136.38	3125.86	269.05	40°08'51.647"N	104°41'32.882"W	0.00	
10417.00†	89.768	0.486	7335.11	3236.25	3225.85	269.90	40°08'52.635"N	104°41'32.871"W	0.00	
10517.00†	89.768	0.486	7335.51	3336.11	3325.85	270.74	40°08'53.623"N	104°41'32.860"W	0.00	
10617.00†	89.768	0.486	7335.92	3435.98	3425.85	271.59	40°08'54.611"N	104°41'32.850"W	0.00	
10717.00†	89.768	0.486	7336.32	3535.84	3525.84	272.44	40°08'55.600"N	104°41'32.839"W	0.00	
10817.00†	89.768	0.486	7336.72	3635.71	3625.84	273.29	40°08'56.588"N	104°41'32.828"W	0.00	
10917.00†	89.768	0.486	7337.13	3735.58	3725.83	274.13	40°08'57.576"N	104°41'32.817"W	0.00	
11017.00†	89.768	0.486	7337.53	3835.44	3825.83	274.98	40°08'58.564"N	104°41'32.806"W	0.00	
11117.00†	89.768	0.486	7337.94	3935.31	3925.82	275.83	40°08'59.552"N	104°41'32.795"W	0.00	
11217.00†	89.768	0.486	7338.34	4035.17	4025.82	276.68	40°09'00.540"N	104°41'32.784"W	0.00	
11317.00†	89.768	0.486	7338.74	4135.04	4125.81	277.53	40°09'01.529"N	104°41'32.773"W	0.00	
11417.00†	89.768	0.486	7339.15	4234.90	4225.81	278.37	40°09'02.517"N	104°41'32.762"W	0.00	
11517.00†	89.768	0.486	7339.55	4334.77	4325.81	279.22	40°09'03.505"N	104°41'32.751"W	0.00	
11617.00†	89.768	0.486	7339.96	4434.63	4425.80	280.07	40°09'04.493"N	104°41'32.740"W	0.00	
11717.00†	89.768	0.486	7340.36	4534.50	4525.80	280.92	40°09'05.481"N	104°41'32.729"W	0.00	
11817.00†	89.768	0.486	7340.76	4634.36	4625.79	281.77	40°09'06.469"N	104°41'32.718"W	0.00	
11875.25	89.768	0.486	7341.00†	4692.53	4684.04	282.26	40°09'07.045"N	104°41'32.712"W	0.00	End of Tangent (J); CODELL TL (TOE)



# Planned Wellpath Report

MELBON 19C-8HZ (PERMIT) PWP

Page 5 of 5



REFERENCE WELLPATH IDENTIFICATION			
Operator	KERR-MCGEE OIL & GAS ONSHORE LP	Slot	SLOT#4 MELBON 19C-8HZ ( 2499' FNL & 1095' FWL, SEC.17)
Area	COLORADO	Well	MELBON 19C-8HZ
Field	WELD COUNTY (KERR MCGEE)	Wellbore	MELBON 19C-8HZ PWB
Facility	SEC.17-T2N-R65W		

HOLE & CASING SECTIONS - Ref Wellbore: MELBON 19C-8HZ PWB Ref Wellpath: MELBON 19C-8HZ (PERMIT) PWP									
String/Diameter	Start MD [ft]	End MD [ft]	Interval [ft]	Start TVD [ft]	End TVD [ft]	Start N/S [ft]	Start E/W [ft]	End N/S [ft]	End E/W [ft]
13.5in Open Hole	17.00	1035.00	1018.00	17.00	1035.00	0.00	0.00	0.00	0.00
9.625in Casing	17.00	1035.00	1018.00	17.00	1035.00	0.00	0.00	0.00	0.00
8.75in Open Hole	1035.00	7668.84	6633.84	1035.00	7324.00	0.00	0.00	477.82	246.60
7in Casing	17.00	7668.84	7651.84	17.00	7324.00	0.00	0.00	477.82	246.60
6.125in Open Hole	7668.84	11875.25	4206.41	7324.00	7341.00	477.82	246.60	4684.04	282.26
4.5in Casing Production	17.00	11875.25	11858.25	17.00	7341.00	0.00	0.00	4684.04	282.26

TARGETS									
Name	MD [ft]	TVD [ft]	North [ft]	East [ft]	Grid East [US ft]	Grid North [US ft]	Latitude	Longitude	Shape
SECTION 17 E/W MIDLINE		0.00	0.10	-95.37	3225404.19	1294542.21	40°08'20.758"N	104°41'37.575"W	polygon
SECTION 17 LINES		0.00	0.10	-95.37	3225404.19	1294542.21	40°08'20.758"N	104°41'37.575"W	polygon
SECTION 17 N/S MIDLINE		0.00	0.10	-95.37	3225404.19	1294542.21	40°08'20.758"N	104°41'37.575"W	polygon
SECTION 8 E/W MIDLINE		0.00	0.10	-95.37	3225404.19	1294542.21	40°08'20.758"N	104°41'37.575"W	polygon
SECTION 8 LINES		0.00	0.10	-95.37	3225404.19	1294542.21	40°08'20.758"N	104°41'37.575"W	polygon
SECTION 8 N/S MIDLINE		0.00	0.10	-95.37	3225404.19	1294542.21	40°08'20.758"N	104°41'37.575"W	polygon
1) MELBON 19C-8HZ BHL ON PLAT (2185' FSL & 1335' FWL)	11875.25	7341.00	4684.04	282.26	3225739.19	1299229.18	40°09'07.045"N	104°41'32.712"W	point

SURVEY PROGRAM - Ref Wellbore: MELBON 19C-8HZ PWB Ref Wellpath: MELBON 19C-8HZ (PERMIT) PWP				
Start MD [ft]	End MD [ft]	Positional Uncertainty Model	Log Name/Comment	Wellbore
17.00	7668.84	NaviTrak (Standard)		MELBON 19C-8HZ PWB
7668.84	11875.25	OnTrak (Standard)		MELBON 19C-8HZ PWB