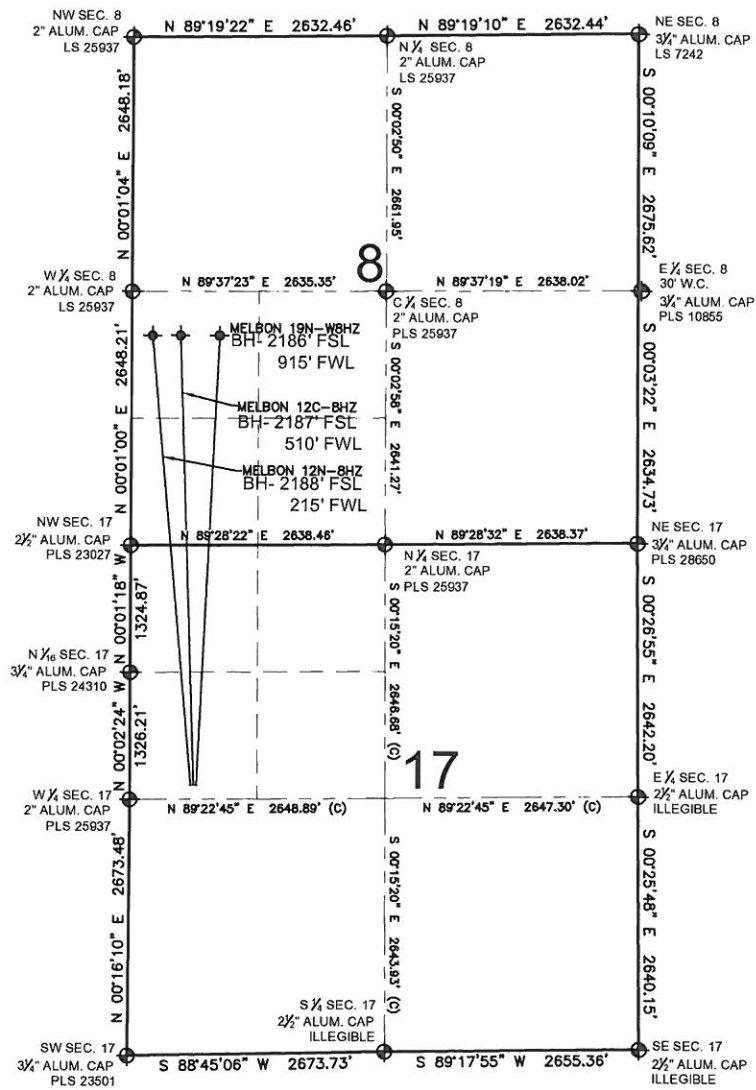


# MELBON 12C-8HZ MULTI-WELL PLAN

SECTION 17, TOWNSHIP 2 NORTH, RANGE 65 WEST, 6TH P.M.



**NOTES:**

MELBON 12N-8HZ TO BE AT 2500' FNL, 635' FWL.  
 BOTTOM HOLE AT 2188' FSL & 215' FWL.  
 MELBON 12C-8HZ TO BE AT 2500' FNL, 665' FWL.  
 BOTTOM HOLE AT 2187' FSL & 510' FWL.  
 MELBON 19N-W8HZ TO BE AT 2500' FNL, 695' FWL.  
 BOTTOM HOLE AT 2186' FSL & 915' FWL.

**LEGEND**

- ⊕ = EXISTING MONUMENT
- ⊙ = BOTTOM HOLE
- = PROPOSED WELL
- ◆ = EXISTING WELL
- BH= BOTTOM HOLE

PREPARED BY:



**PFS** llc  
 Petroleum Field Services, LLC  
 1801 W. 13th Ave.  
 Denver, CO 80204

KERR-MCGEE OIL & GAS ONSHORE LP

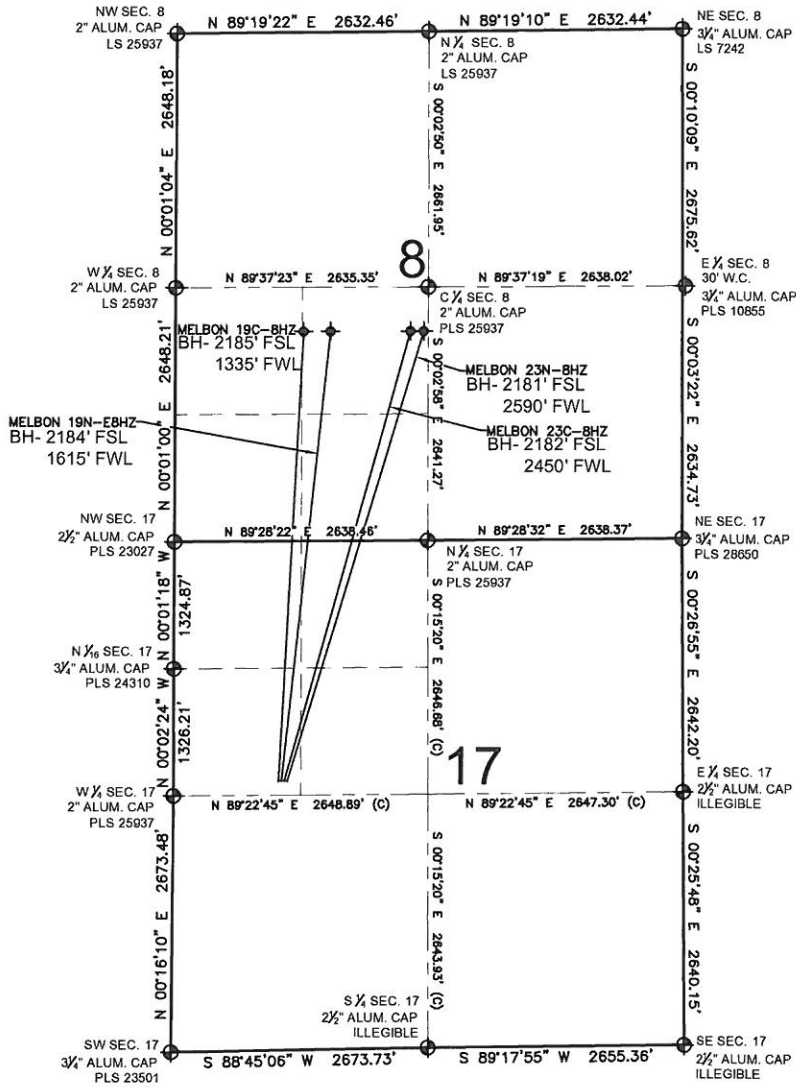
FIELD DATE: 12-12-12	SURFACE LOCATION: SW 1/4 NW 1/4, SEC. 17, T2N, R65W, 6TH P.M. WELD COUNTY, COLORADO
DRAWING DATE: 12-14-12	



# MELBON 12C-8HZ

## MULTI-WELL PLAN

SECTION 17, TOWNSHIP 2 NORTH, RANGE 65 WEST, 6TH P.M.



**NOTES:**

- MELBON 19C-8HZ TO BE AT 2499' FNL, 1095' FWL.
- BOTTOM HOLE AT 2185' FSL & 1335' FWL.
- MELBON 19N-E8HZ TO BE AT 2499' FNL, 1125' FWL.
- BOTTOM HOLE AT 2184' FSL & 1615' FWL.
- MELBON 23C-8HZ TO BE AT 2499' FNL, 1155' FWL.
- BOTTOM HOLE AT 2182' FSL & 2450' FWL.
- MELBON 23N-8HZ TO BE AT 2499' FNL, 1185' FWL.
- BOTTOM HOLE AT 2181' FSL & 2590' FWL.

**LEGEND**

- ⊕ = EXISTING MONUMENT
- ⬤ = PROPOSED WELL
- ⬥ = BOTTOM HOLE
- ⬧ = EXISTING WELL
- BH= BOTTOM HOLE

PREPARED BY:



KERR-MCGEE OIL & GAS ONSHORE LP

FIELD DATE:  
09-20-12

DRAWING DATE:  
12-14-12

SURFACE LOCATION:

SW 1/4 NW 1/4, SEC. 17, T2N, R65W, 6TH P.M.  
WELD COUNTY, COLORADO

