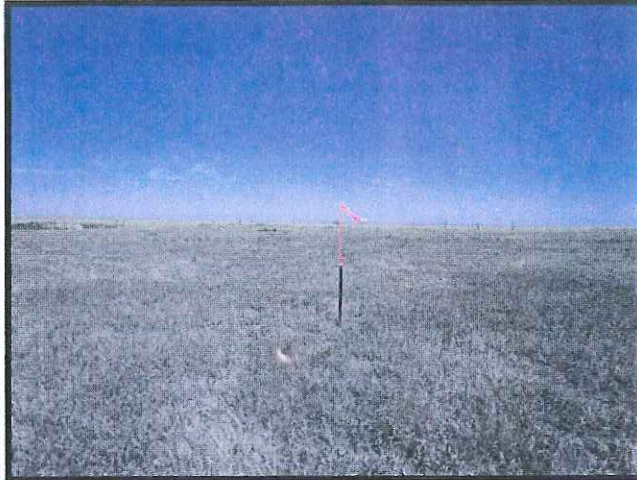


## LOCATION PHOTOS



**Looking North**



**Looking East**



**Looking South**



**Looking West**

**Well Pad Name:** BUCHNER 2-2H

**Operator:** CONTINENTAL RESOURCES

**Location:** T7N R60W S2 NWSW

**Date Taken:** 10/02/2012

  
**Continental**

1801 W 13<sup>th</sup> Ave.  
Denver, CO  
(303) 928-7128  
[www.petro-fs.com](http://www.petro-fs.com)

**PFS**   
Petroleum Field Services LLC