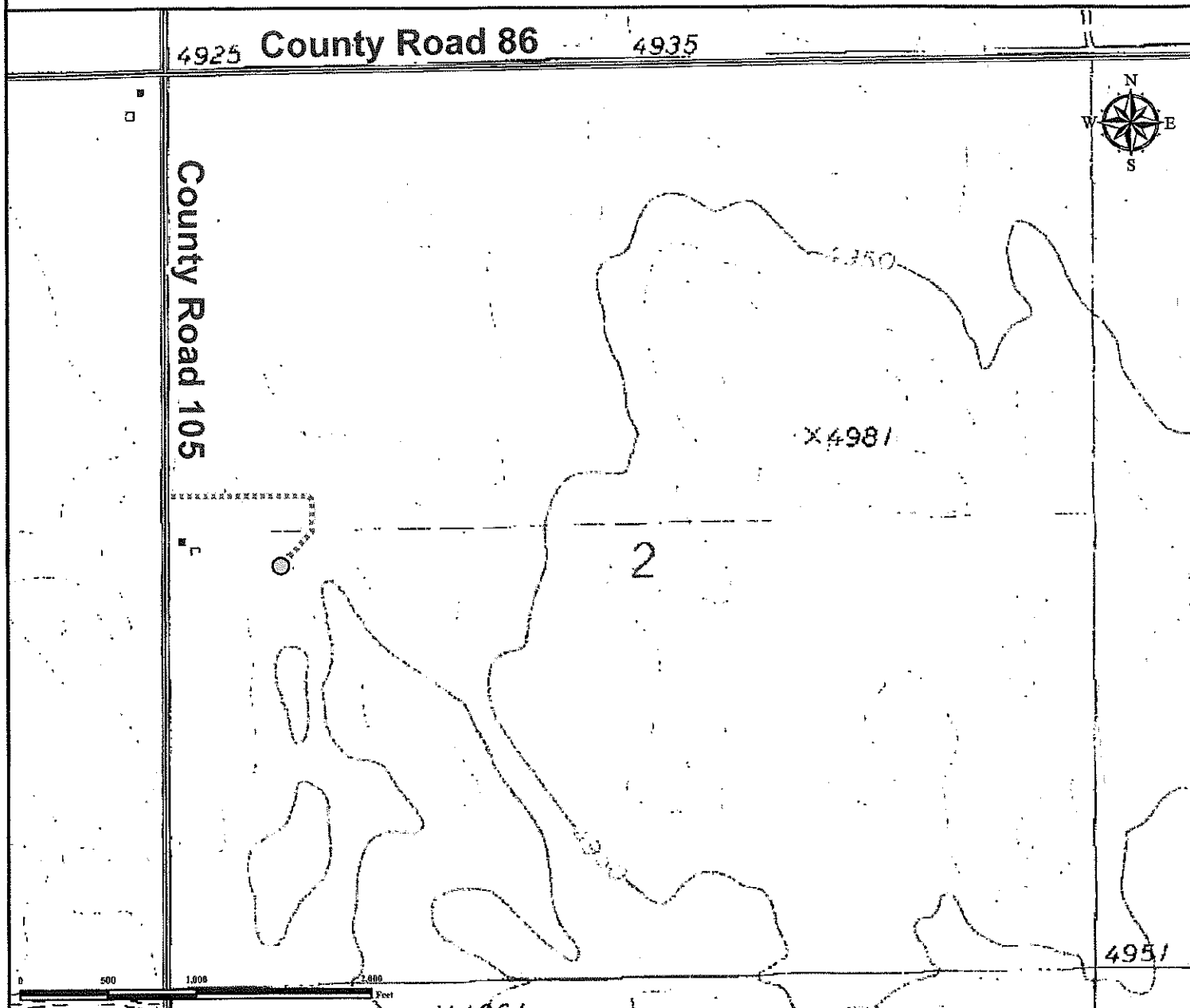


# Access Road Map

## BUCHNER 2 - 2 H

NW¼ SW¼ SECTION 2, TOWNSHIP 7 NORTH, RANGE 60 WEST OF THE 6TH PRINCIPAL MERIDIAN



**From Ault, CO:** From the intersection of CO-392/County Road 77 and Highway 14/County Road 90, proceed East on Highway 14 ±13.9 miles to County Road 105.

**Turn Right** onto County Road 105 and proceed south ±2.4 miles to proposed access road

**Turn Left** onto proposed access road and drive East ±0.16 miles. Follow road as it turn to the south and proceed ±0.02 miles to proposed well location.

Total distance from Briggsdale, CO to proposed well location is ±16.48 miles.

### Legend

Proposed Well     
 Proposed Access Road     
 Public Road

### Reference Location

**\*\* All Measurements are Made from Reference Well BUCHNER 2-2H \*\***

Lat: 40.603695° Long: -104.066655° (NAD83)  
Elevation: 4932 Feet



Use our resources to find yours!

[www.petro-fs.com](http://www.petro-fs.com)  
(303) 928-7128

Field Date: 10/02/2012  
Drafting Date: 11/06/2012  
Drafter: PAH  
Revision:

Data Sources:  
- TOPO courtesy of USGS

Prepared for:

