

WELL LOCATION CERTIFICATE

THIS MAP DOES NOT REPRESENT A BOUNDARY SURVEY

SECTION: 2
TOWNSHIP: 7N
RANGE: 60W

NW COR. SEC 2
2 1/2" ALUM. CAP
(LS 30462)

N 88°46'28" E 2651.87'

N 1/4 COR. SEC 2
2 1/2" ALUM. CAP
(LS 30462)

N 88°53'13" E 2621.51'

NE COR. SEC 2
2 1/2" ALUM. CAP
(LS 30462)

N 00°11'47" W 5296.69'

SHL
BUCHNER
2-2H

EL. 4932'

S 00°00'06" E
445.03'

LANDING POINT

S 00°07'42" E 4741.25'

2434'

BHL

SW COR. SEC 2
2 1/2" BRASS CAP
(LS 30462)

S 88°18'02" W 5315.32'

SE COR. SEC 2
2 1/2" ALUM. CAP
(LS 38231)

In accordance with a request from Lance Harper with Continental Resources, Petroleum Field Services, LLC has determined the surface location of the BUCHNER 2-2H to be 2434' from the SOUTH line and 662' from the WEST line as measured at right angles from the section line of Section 2, Township 7 North, Range 60 West and the bottom hole to be 2550' from the SOUTH line and 660' from the WEST line as measured at right angles from the section line of Section 11, Township 7 North, Range 60 West of the Sixth Principal Meridian, County of Weld, State of Colorado.

I hereby state that this Well Location Certificate was prepared by me, or under my direct supervision, that the fieldwork was completed on 10/02/12, for and on behalf of Continental Resources, that this is not a Land Survey Plat or an Improvement Survey Plat, and that it is not to be relied upon for establishment of fence, building, or other future improvement lines.

SURFACE LOCATION:
LATITUDE: 40.603695°N
LONGITUDE: 104.066655°W
PDOP: 1.4
ELEV: 4932'
1/4 1/4: NW 1/4 SW 1/4
NEAREST PROPERTY LINE: 662' West

BOTTOM HOLE:
LATITUDE: 40.589460°N
LONGITUDE: 104.066919°W

0 500 1000
SCALE: 1"=1000'

Note:

- 1) Bearings shown are Grid Bearings of the Colorado State Plane Coordinate System, North Zone, North American Datum 1983/2007. The lineal dimensions as shown herein are grid distances based upon the "U.S. Survey Foot."
- 2) Ground elevations are based on an observed GPS elevation (NAVD 1988 DATUM)
- 3) IMPROVEMENTS: See LOCATION DRAWING exhibit for all visible improvements within 400' of disturbed area.
- 4) SURFACE USE: RANGELAND
- 5) INSTRUMENT OPERATOR: ALAN HINIZO

SHEET 1 OF 2

DRAWING
DATE:
10-31-12

DRAWN BY:
SMF

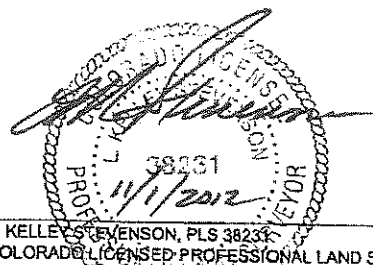
CHECKED BY:
TJN

Note:

According to Colorado law, you must commence any legal action based upon any defect in this W.L.C. within three years after you first discover such defect. In no event, may any action based upon any defect in this survey be commenced more than ten years after the date of this certification shown hereon. (13-60-105 C.R.S.)

LEGEND

- ⊕ = FOUND MONUMENT
- ⊙ = PROPOSED WELL
- ⊕ = BOTTOM HOLE
- ⊙ = LANDING POINT

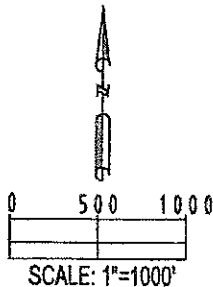
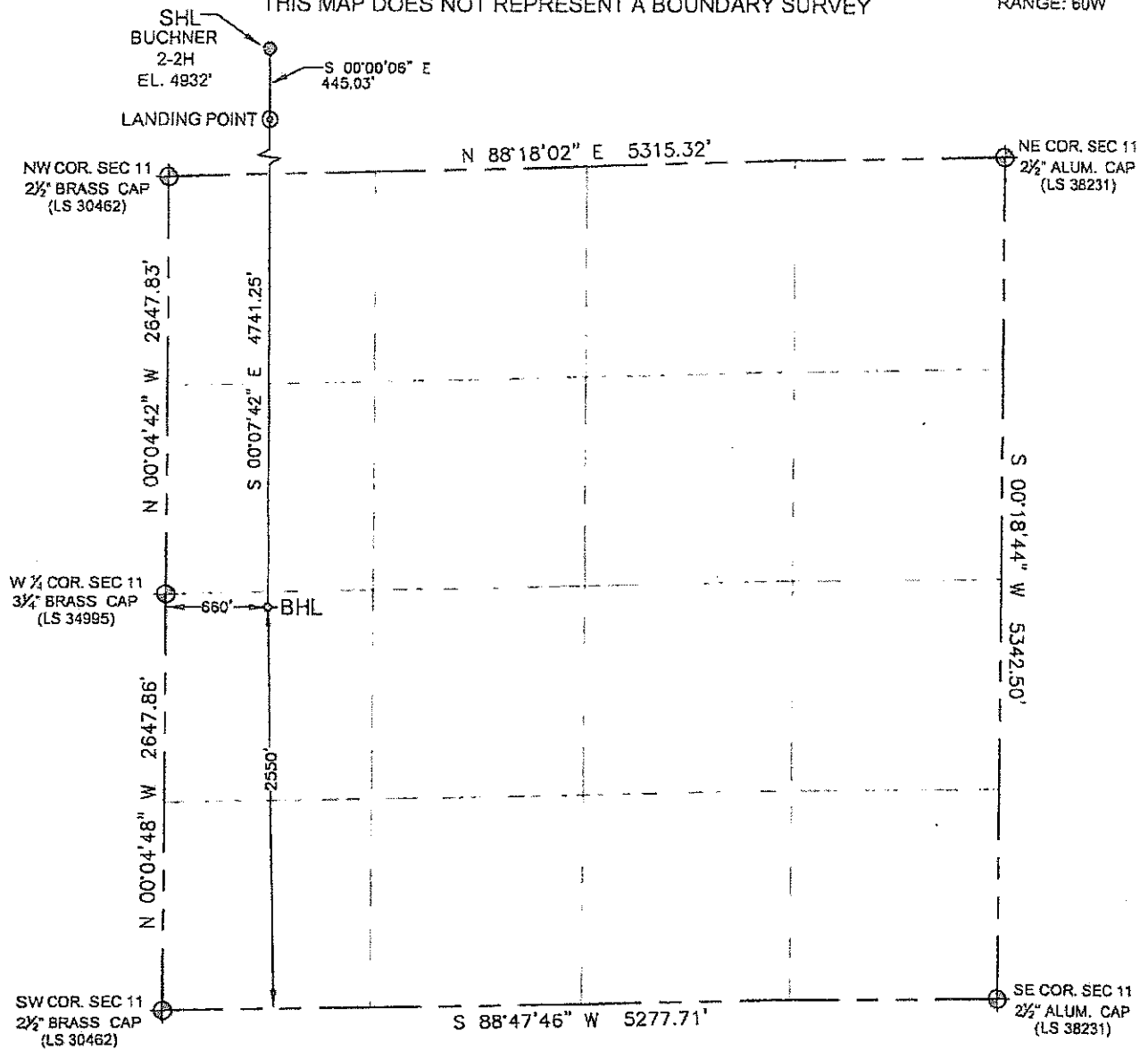


L. KELLEY STEVENSON, PLS 38231
COLORADO LICENSED PROFESSIONAL LAND SURVEYOR
FOR AND ON BEHALF OF PFS, LLC

WELL LOCATION CERTIFICATE

SECTION: 11
TOWNSHIP: 7N
RANGE: 60W

THIS MAP DOES NOT REPRESENT A BOUNDARY SURVEY



SHEET 2 OF 2

DRAWING
DATE:
10-31-12

DRAWN BY:
SMF

CHECKED BY:
TJN

Note:
According to Colorado law, you must commence any legal action based upon any defect in this W.L.C. within three years after you first discover such defect. In no event, may any action based upon any defect in this survey be commenced more than ten years after the date of this certification shown hereon. (13-80-105 C.R.S.)

LEGEND

- ⊕ = FOUND MONUMENT
- ⊙ = PROPOSED WELL
- ⊛ = BOTTOM HOLE
- ⊙ = LANDING POINT



L. KELLEY STEVENSON, PLS 38231
COLORADO LICENSED PROFESSIONAL LAND SURVEYOR
FOR AND ON BEHALF OF P.F.S., LLC