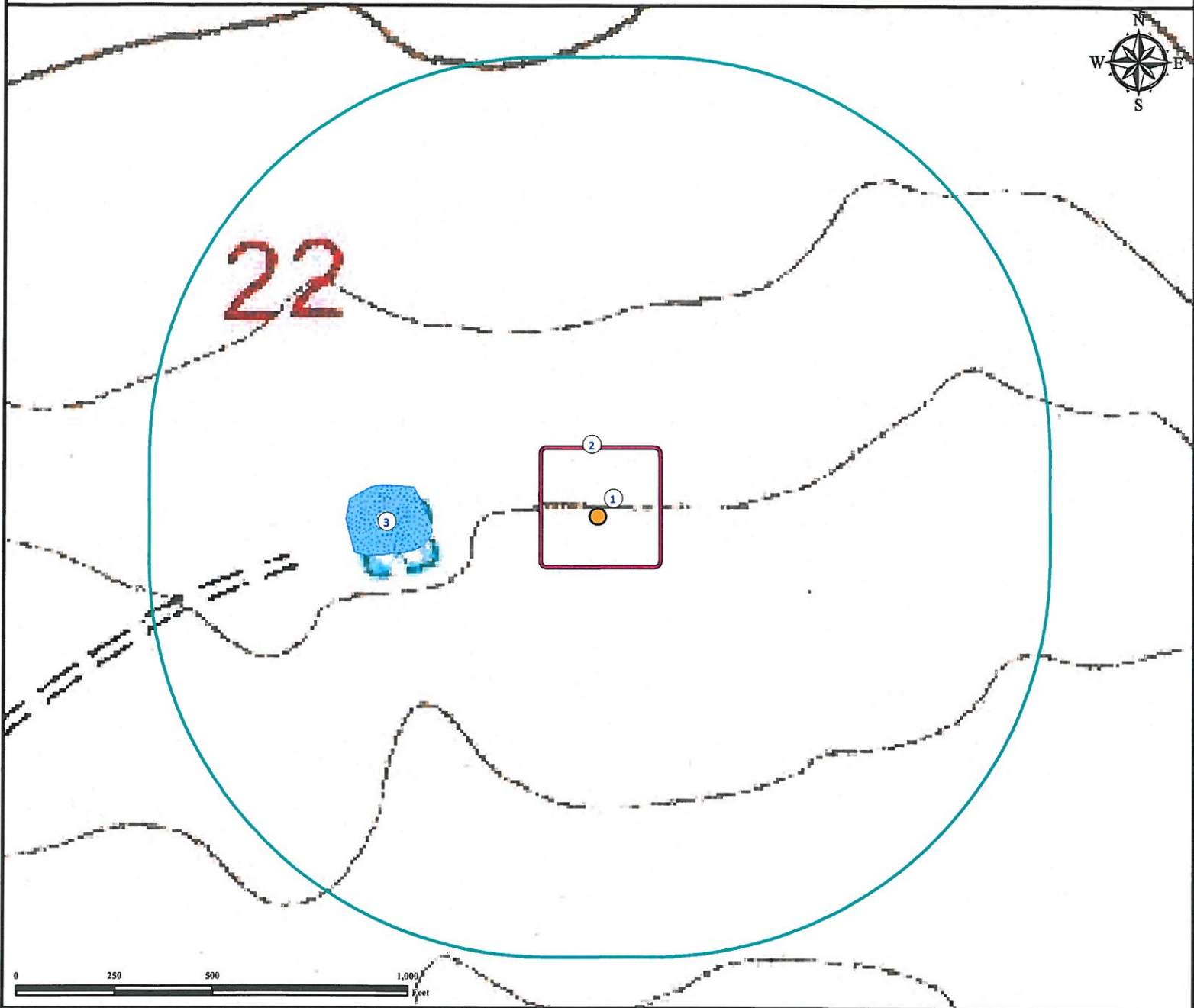


Hydrology Map


PARKER TRUST 33-22

NW¼ SE¼ SECTION 22, TOWNSHIP 17 SOUTH, RANGE 55 WEST OF THE 6TH PRINCIPAL MERIDIAN



1. Proposed Well PARKER TRUST 33-22.
2. Operational Disturbance Area.
3. Pond is ±425' W.

Legend

- | | |
|---|--|
|  Proposed Well |  Disturbance Area |
|  Pond |  1000' Radius |

Reference Location

** All Measurements are Made from
Reference Well PARKER TRUST 33-22 **

Lat: 38.551628° Long: -103.547725° (NAD83)
Elevation: 4832 Feet



Use our resources to find yours!
www.petro-fs.com
(303) 928-7128

Field Date: 11/27/2012
Drafting Date: 12/05/2012
Drafter: PAH
Revision:

Data Sources:
TOPO courtesy USGS

Prepared for:

PIONEER
NATURAL RESOURCES

PIONEER NATURAL RESOURCES USA INC