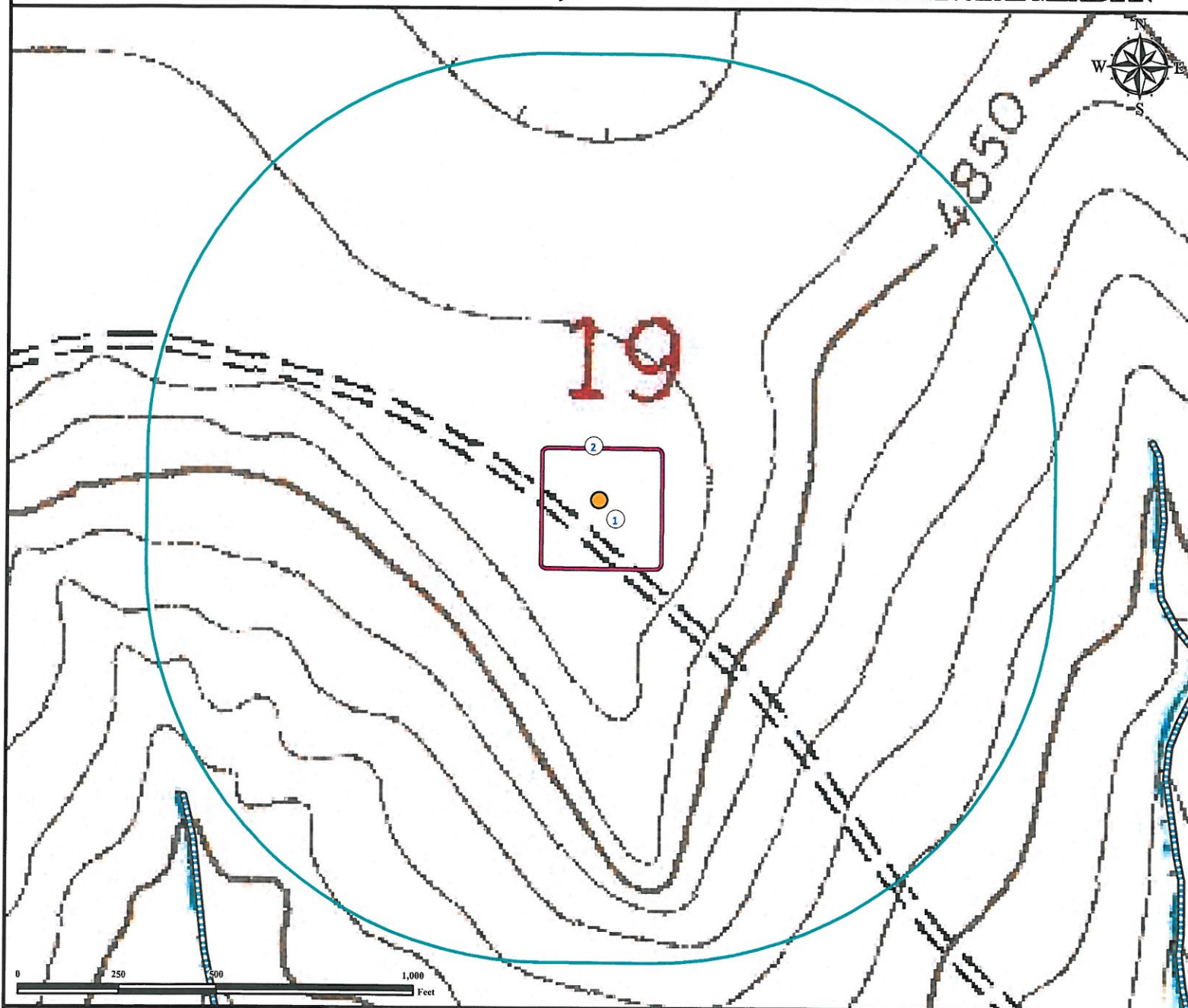


# Hydrology Map

## LONG VIEW FARM 33-19

NW¼ SE¼ SECTION 19, TOWNSHIP 16 SOUTH, RANGE 53 WEST OF THE 6TH PRINCIPAL MERIDIAN



1. Proposed Well LONG VIEW FARMS 33-19

2. Operational Disturbance Area.

There are no visible surface waters within a 1000' radius of the disturbance area of the proposed oil and gas location.

### Legend



Proposed Well



Disturbance Area



Intermittent Stream



1000' Radius

### Reference Location

\*\* All Measurements are Made from  
Reference Well LONG VIEW FARM 33-19 \*\*

Lat: 38.645222° Long: -103.383664° (NAD83)  
Elevation: 4876 Feet



Use our resources to find yours!  
[www.petro-fs.com](http://www.petro-fs.com)  
(303) 928-7128

Field Date: 11/12/2012  
Drafting Date: 11/28/2012  
Drafter: GWB  
Revision:

Data Sources:  
TOPO courtesy USGS  
Intermittent Stream data courtesy of NHD

Prepared for:

**PIONEER**  
NATURAL RESOURCES

PIONEER NATURAL RESOURCES USA INC