

The Road to Excellence Starts with Safety

Sold To #: 300721		Ship To #: 2947424		Quote #:		Sales Order #: 9723788	
Customer: WPX ENERGY ROCKY MOUNTAIN LLC-EBUS				Customer Rep: Oaks, Rick			
Well Name: RWF		Well #: 313-35		API/UWI #: 05-045-20492			
Field: RULISON		City (SAP): RIFLE		County/Parish: Garfield		State: Colorado	
Lat: N 39.483 deg. OR N 39 deg. 28 min. 59.869 secs.				Long: W 107.863 deg. OR W -108 deg. 8 min. 13.538 secs.			
Contractor: NABORS 576		Rig/Platform Name/Num: NABORS 576					
Job Purpose: Cement Surface Casing							
Well Type: Development Well				Job Type: Cement Surface Casing			
Sales Person: MAYO, MARK				Srv Supervisor: KUKUS, CHRISTOPHER		MBU ID Emp #: 413952	
Job Personnel							
HES Emp Name	Exp Hrs	Emp #	HES Emp Name	Exp Hrs	Emp #	HES Emp Name	Exp Hrs
GOWEN, WESLEY M	0.0	496205	KEANE, JOHN Donovan	0.0	486519	KUKUS, CHRISTOPHER A	0.0
Equipment							
HES Unit #	Distance-1 way	HES Unit #	Distance-1 way	HES Unit #	Distance-1 way	HES Unit #	Distance-1 way
10616651C	60 mile	10867304	60 mile	10998054	60 mile	11583931	60 mile
11808827	60 mile						
Job Hours							
Date	On Location Hours	Operating Hours	Date	On Location Hours	Operating Hours	Date	On Location Hours
TOTAL				Total is the sum of each column separately			
Job				Job Times			
Formation Name				Date	Time	Time Zone	
Formation Depth (MD)	Top	Bottom		Called Out	04 - Sep - 2012	21:30	MST
Form Type	BHST			On Location	05 - Sep - 2012	01:00	MST
Job depth MD	1175. ft	Job Depth TVD	1175. ft	Job Started	05 - Sep - 2012	03:53	MST
Water Depth		Wk Ht Above Floor	5. ft	Job Completed	05 - Sep - 2012	04:55	MST
Perforation Depth (MD)	From	To		Departed Loc	05 - Sep - 2012	06:30	MST
Well Data							
Description	New / Used	Max pressure psig	Size in	ID in	Weight lbm/ft	Thread	Grade
							Top MD ft
							Bottom MD ft
							Top TVD ft
							Bottom TVD ft
Sales/Rental/3 rd Party (HES)							
Description	Qty	Qty uom	Depth	Supplier			
PLUG,CMTG,TOP,9 5/8,HWE,8.16 MIN/9.06 MA	1	EA					
Tools and Accessories							
Type	Size	Qty	Make	Depth	Type	Size	Qty
Guide Shoe					Packer		
Float Shoe					Bridge Plug		
Float Collar					Retainer		
Insert Float							
Stage Tool							
Miscellaneous Materials							
Gelling Agt	Conc		Surfactant	Conc	Acid Type	Qty	Conc %
Treatment Fld	Conc		Inhibitor	Conc	Sand Type	Size	Qty

Fluid Data

Stage/Plug #: 1										
Fluid #	Stage Type	Fluid Name	Qty	Qty uom	Mixing Density lbm/gal	Yield ft ³ /sk	Mix Fluid Gal/sk	Rate bbl/min	Total Mix Fluid Gal/sk	

Stage/Plug #: 1

Stage/Plug #: 1									
Fluid #	Stage Type	Fluid Name	Qty	Qty uom	Mixing Density lbm/gal	Yield ft ³ /sk	Mix Fluid Gal/sk	Rate bbl/min	Total Mix Fluid Gal/sk
1	Water Spacer		20.00	bbl	.	.0	.0	.0	
2	Lead Cement	VERSACEM (TM) SYSTEM (452010)	160.0	sacks	12.3	2.38	13.75		13.75
		13.75 Gal FRESH WATER							
3	Tail Cement	VERSACEM (TM) SYSTEM (452010)	160.0	sacks	12.8	2.11	11.75		11.75
4	Displacement		88.00	bbl	.	.0	.0	.0	
Calculated Values		Pressures		Volumes					
Displacement		Shut In: Instant		Lost Returns		Cement Slurry		Pad	
Top Of Cement		5 Min		Cement Returns		Actual Displacement		Treatment	
Frac Gradient		15 Min		Spacers		Load and Breakdown		Total Job	
Rates									
Circulating		Mixing		Displacement		Avg. Job			
Cement Left In Pipe		Amount	0 ft	Reason	Shoe Joint				
Frac Ring # 1 @	ID	Frac ring # 2 @	ID	Frac Ring # 3 @	ID	Frac Ring # 4 @	ID		
The Information Stated Herein Is Correct				Customer Representative Signature					

The Road to Excellence Starts with Safety

Sold To #: 300721	Ship To #: 2947424	Quote #:	Sales Order #: 9723788
Customer: WPX ENERGY ROCKY MOUNTAIN LLC-EBUS	Customer Rep: Oaks, Rick		
Well Name: RWF	Well #: 313-35	API/UWI #: 05-045-20492	
Field: RULISON	City (SAP): RIFLE	County/Parish: Garfield	State: Colorado
Legal Description:			
Lat: N 39.483 deg. OR N 39 deg. 28 min. 59.869 secs.		Long: W 107.863 deg. OR W -108 deg. 8 min. 13.538 secs.	
Contractor: NABORS 576	Rig/Platform Name/Num: NABORS 576		
Job Purpose: Cement Surface Casing			Ticket Amount:
Well Type: Development Well		Job Type: Cement Surface Casing	
Sales Person: MAYO, MARK	Srvc Supervisor: KUKUS, CHRISTOPHER	MBU ID Emp #: 413952	

Activity Description	Date/Time	Cht #	Rate bbl/min	Volume bbl		Pressure psig		Comments
				Stage	Total	Tubing	Casing	
Call Out	09/04/2012 21:30							ELITE # 4
Depart Yard Safety Meeting	09/04/2012 23:30							ALL HES EMPLOYEES
Arrive At Loc	09/05/2012 01:00							RIG RUNNING CASING HES SPOTTED TRUCKS AND RIGGED UP THEN WAITED FOR CASING TO BE RAN
Assessment Of Location Safety Meeting	09/05/2012 01:05							ALL HES EMPLOYEES
Pre-Rig Up Safety Meeting	09/05/2012 01:10							ALL HES EMPLOYEES
Rig-Up Equipment	09/05/2012 01:15							1 F-550 PICKUP 1 HT- 400 PUMP TRUCK 1 660 BULK TRUCK
Pre-Job Safety Meeting	09/05/2012 03:45							ALL HES EMPLOYEES AND RIG CREW
Start Job	09/05/2012 03:53							TD: 1175 TP: 1172.06 SJ: 44.82 CSG: 9 5/8 32.3# OH: 13 1/2 MUD WT 10.8 VIS: 70
Test Lines	09/05/2012 03:55					4117.0		PRESSURE TEST OK
Pump Spacer	09/05/2012 04:04		4	20	20		134.0	FRESH WATER SPACER
Pump Lead Cement	09/05/2012 04:15		6	67.8	67.8		384.0	160 SKS 12.3 PPG 2.38 YEILD 13.75 GAL / SK LEAD CEMENT WEIGHT VERIFIED VIA MUD SCALES THROUGH OUT LEAD CEMENT
Activity Description	Date/Time	Cht	Rate bbl/min	Volume bbl		Pressure psig		Comments

Sold To # : 300721

Ship To # :2947424

Quote # :

Sales Order # :

9723788

SUMMIT Version: 7.3.0040

Sunday, September 16, 2012 01:50:00

Cementing Job Log

		#		Stage	Total	Tubing	Casing	
Pump Tail Cement	09/05/2012 04:25		6	60.1	60.1		406.0	160 SKS 12.8 PPG 2.11 YEILD 11.75 GAL / SK TAIL CEMENT WEIGHT VERIFIED VIA MUD SCALES THROUGHT TAIL CEMENT
Shutdown	09/05/2012 04:32							WASH UP ON TOP OF THE PLUG
Drop Plug	09/05/2012 04:33							PLUG AWAY NO PROBLEMS
Pump Displacement	09/05/2012 04:38		10	88.7	88.7		623.0	FRESH WATER
Slow Rate	09/05/2012 04:48		2	78.7	78.7		280.0	SLOW RATE TO BUMP PLUG
Bump Plug	09/05/2012 04:51		2	88.7	88.7		270.0	BUMP PLUG @ 270 AND TOOK PRESSURE UP TO 956 PSI
Check Floats	09/05/2012 04:53							FLOATS HELD .5 BBL BACK TO DISPLACEMENT TANKS
End Job	09/05/2012 04:55							WELL HAD GOOD CIRCULATION THROUGH OUT CEMENT JOB GOT 23 BBL OF CEMENT TO SURFACE RIG USED 40 LB OF SUGAR
Pre-Rig Down Safety Meeting	09/05/2012 05:15							ALL HES EMPLOYEES
Rig-Down Equipment	09/05/2012 05:20							
Pre-Convoy Safety Meeting	09/05/2012 06:20							ALL HES EMPLOYEES
Crew Leave Location	09/05/2012 06:30							THANKS FOR USING HALLIBURTON CEMENT CHRIS KUKUS AND CREW

Sold To # : 300721

Ship To # :2947424

Quote # :

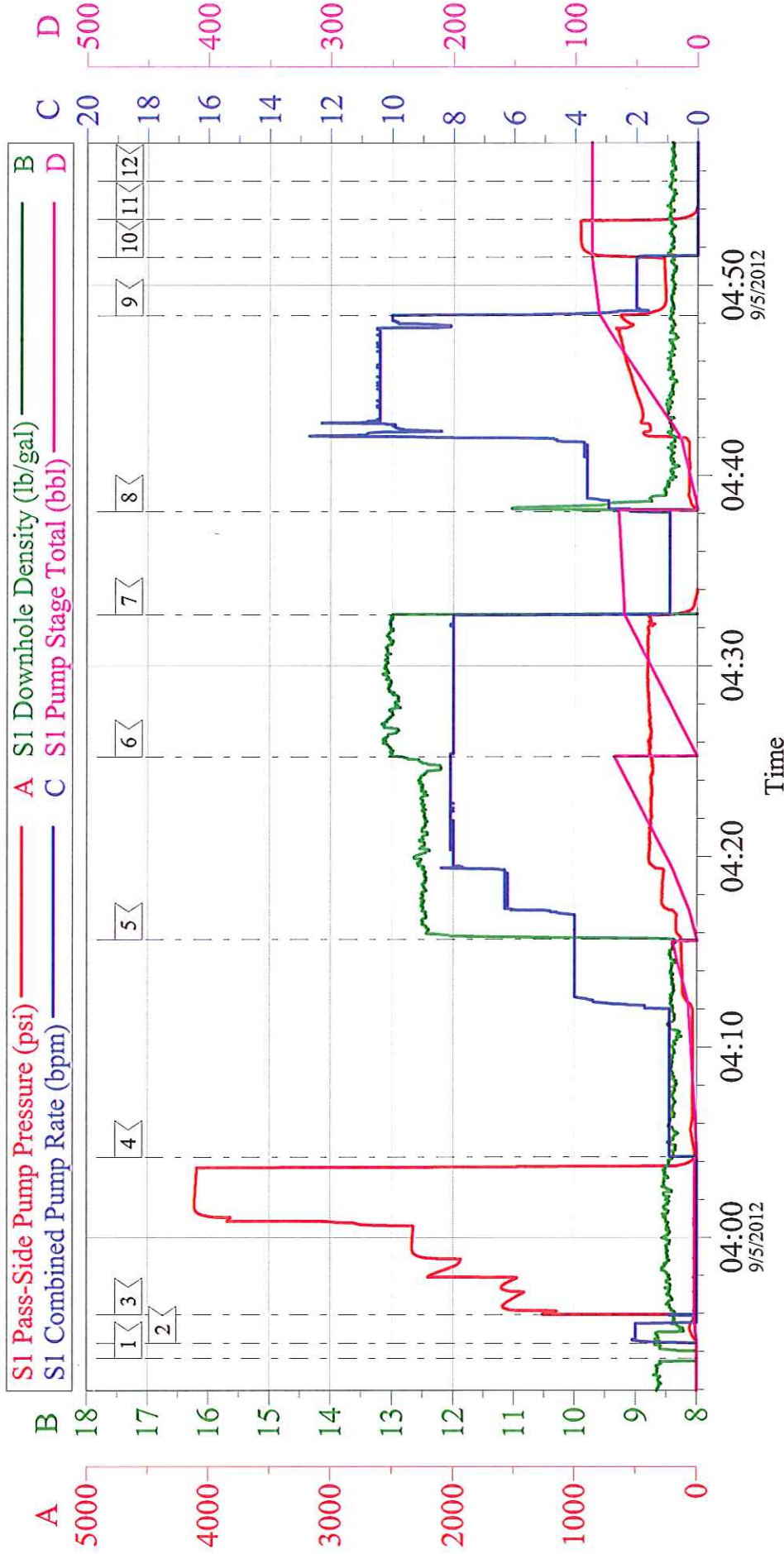
Sales Order # : 9723788

SUMMIT Version: 7.3.0040

Sunday, September 16, 2012 01:50:00

WPX - RWF 313-35

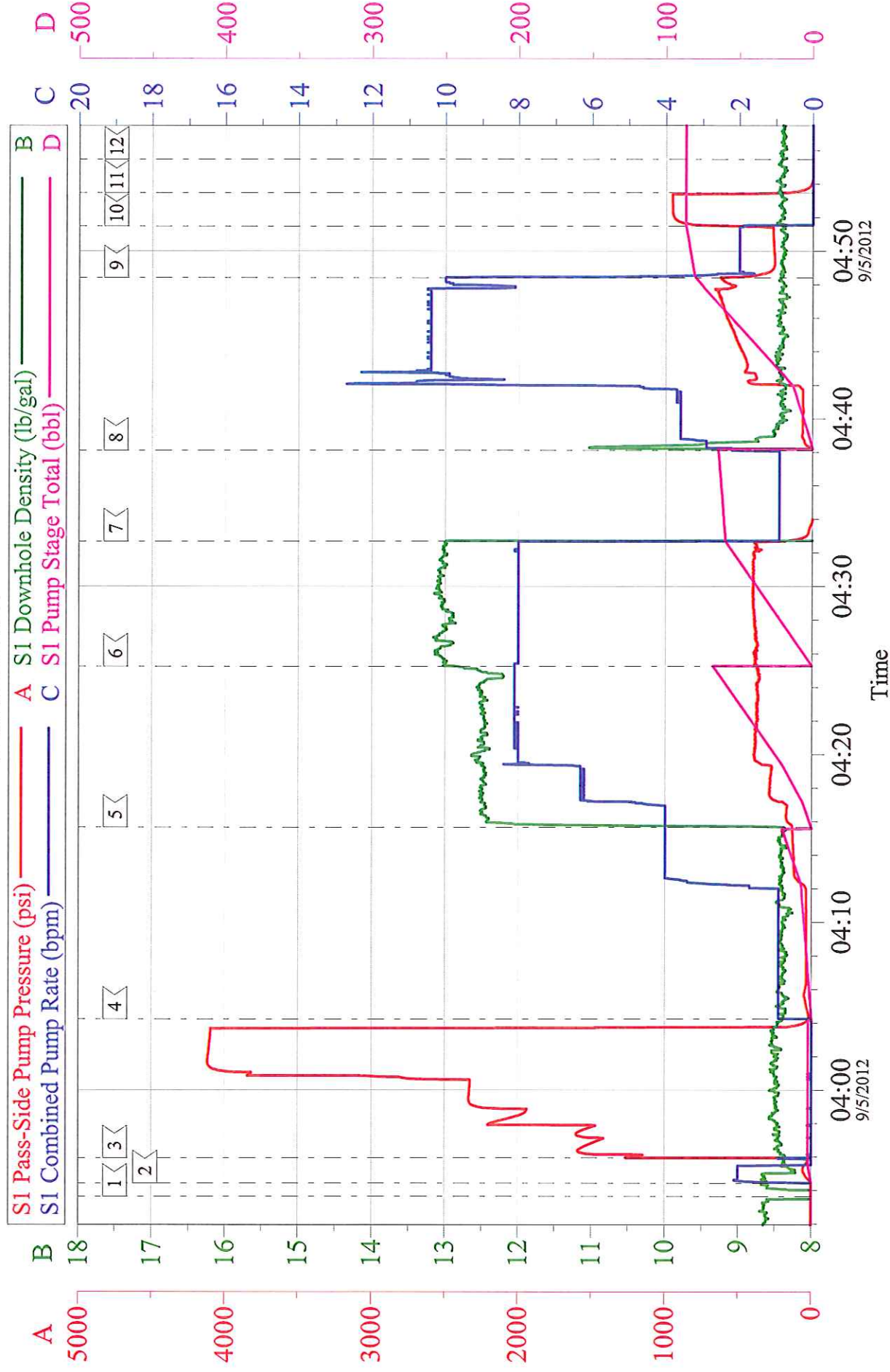
9 5/8 SURFACE



Customer: WPX	Job Date: 05-Sep-2012	Sales Order #: 9723788
Well Description: RWF 313-35	Job Type: SURFACE	ADC Used: YES
Company Rep: RICK OAKS	Cement Supervisor: CHRIS KUKUS	Elite #: WESLEY GOWEN

WPX - RWF 313-35

9 5/8 SURFACE



Customer: WPX	Job Date: 05-Sep-2012	Sales Order #: 9723788
Well Description: RWF 313-35	Job Type: SURFACE	ADC Used: YES
Company Rep: RICK OAKS	Cement Supervisor: CHRIS KUKUS	Elite # 4: WESLEY GOWEN