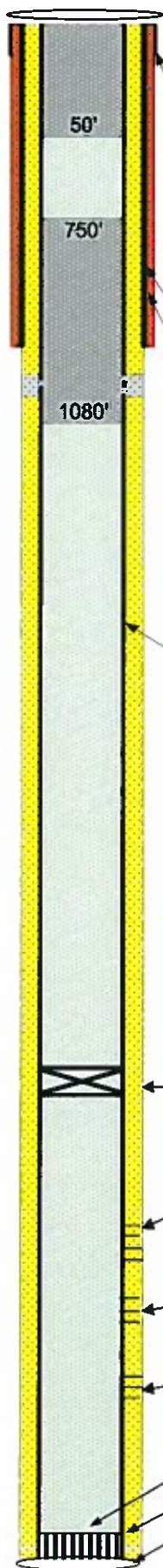


Well Bore Schematic



Balanced plug from 400' to surface

Well Name **My Way Ranch 8-4**
 Diagram Date **10-Jan-13**
 Surface Location **469' FNL & 630' FWL SEC 8 T10S R94W**
 Btm Hole Loc. **697' FNL & 652' FWL SEC 8 T10S R94W**
 Field **Plateau**
 County **Mesa**
 State **Colorado**
 API No. **05-077-08813-00**
 Lease No. **Fee Lease (State permit 20041661)**
 G.L. Elevation **6860'**
 K.B. Elevation **6878'**

Conductor @ 40' GL 16" .250" wall
 Cement w/ 4 Cu. Ft. Redimix
 Casing 1040' 24 Jts. of 8-5/8", 32#, 8r, J-55, LT&C
 Cement w/ 170 sxs Lead Halco Type 5 Cement w/ 2% Calseal, 2% Econlite, .3% Versaset, 5.64#/sx Salt, .125#/sx Polyflake. 25% D-Air
 180 sxs Tail Halco Type 5 Cement w/ 2% Gel, 3% Salt (BWOW) .125#/sk Pol-E-Flake

Balanced plug from 1080' - 750'
 Squeeze shot at 1070'

Casing 0- 6188' 148 Jts. 4-1/2" 11.6# 8r 1-80 LTC
 Cement w/ 550 sxs Lead Halco Type MG 25/75 POZ w/ 8% Gel, 10% Lime, 1/8#/sk Polyflake
 560 sxs Tail Halco Type G 50/50 POZ, w/ 2% Gel, .6% Halad-23, .3% Halad-322, .3% Versaset, 2% Super CBL

Lead Cement top Calculated from 3700' to surface with 10% excess
 Tail cement calculated to +/- 3700' with 10% excess

Marker Joint Tops
 5,237' 21.11
 3,958' 20.91

CIBP at 4330' w/ 5 sx cement

Upper Cameo
 Williams Fork perfs 4359 - 5243 frac w/ 318,704 # 20/40 White sd

Cozette perfs 5810 - 5861 frac w/ 49,000 # 20/40 White sd

Corcoran perfs 5956 - 6041 frac w/ 58,000 # 20/40 White sd

PBTD 6,143'
 FLOAT COL. 6,144'
 SHOE 6,188'
 TD 6,189'