

US ROCKIES REGION PLANNING

COLORADO NORTHERN ZONE - 83

WELD_GOBBLER 14-23HZ PAD

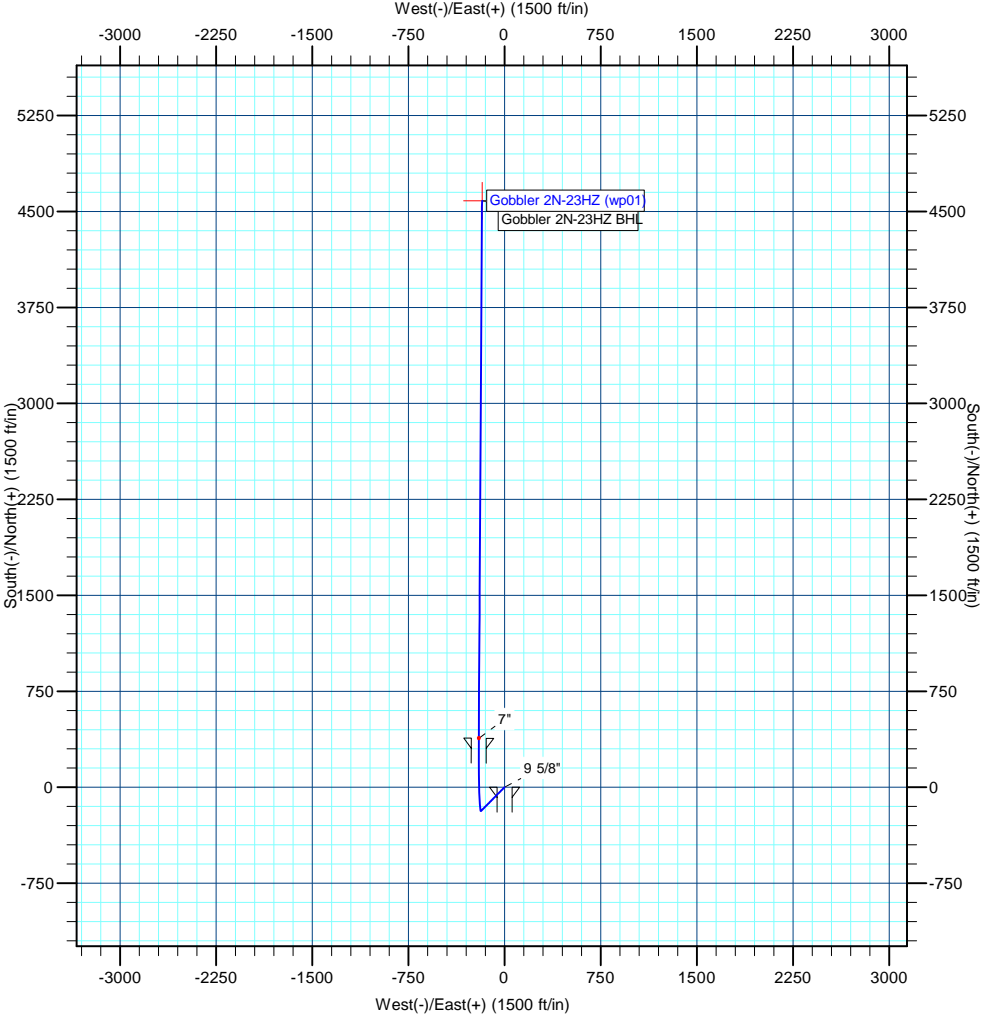
Gobbler 2N-23HZ

Gobbler 2N-23HZ

Plan: Gobbler 2N-23HZ (wp01)

Standard Planning Report

19 March, 2012



T

M

Azimuths to True North

Magnetic North: 8.72°

Magnetic Field

Strength: 52902.8snT

Dip Angle: 66.80°

Date: 3/19/2012

Model: IGRF2010



Project: COLORADO NORTHERN ZONE - 83

Site: WELD GOBBLER 14-23HZ PAD

Well: Gobbler 2N-23HZ

Wellbore: Gobbler 2N-23HZ

Section:

SHL:

Design: Gobbler 2N-23HZ (wp01)

Latitude: 40.117146

Longitude: -104.740765

GL: 5094.00

KB: gl + rkb @ 5111.00ft

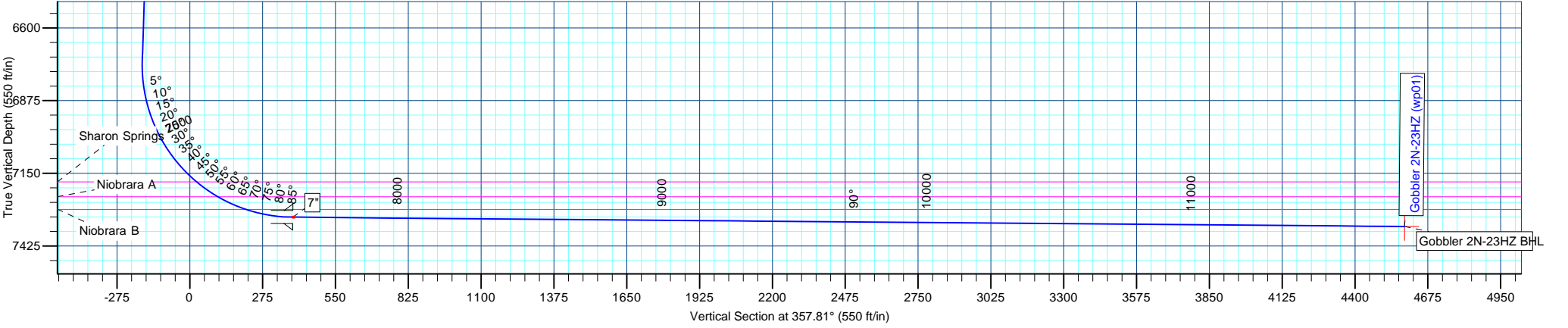
WELL DETAILS: Gobbler 2N-23HZ						
+N/-S	+E/-W	Northing	Ground Level: Easting	5094.00 Latitude	40.117146 Longitude	Slot
0.00	0.00	1286429.32	3212334.45			

SECTION DETAILS								
MD	Inc	Azi	TVD	+N/-S	+E/-W	Dleg	TFace	VSect
0.00	0.00	0.00	0.00	0.00	0.00	0.00	0.00	0.00
1150.00	0.00	0.00	1150.00	0.00	0.00	0.00	0.00	0.00
1286.34	2.73	224.71	1286.29	-2.31	-2.28	2.00	224.71	-2.22
6730.12	2.73	224.71	6723.91	-186.35	-184.49	0.00	0.00	-179.15
7645.23	89.56	0.31	7316.00	382.00	-201.00	10.00	135.58	389.41
7650.62	89.52	0.35	7316.04	387.39	-200.97	1.00	137.61	394.80
1847.57	89.52	0.35	7351.00	4584.12	-175.60	0.00	0.00	4587.48

WELLBORE TARGET DETAILS (MAP CO-ORDINATES AND LAT/LONG)						
Name	TVD	+N/-S	+E/-W	Latitude	Longitude	Shape
Gobbler 2N-23HZ BHL	7351.00	4584.12	-175.60	40.129730	-104.741393	Point

FORMATION TOP DETAILS		
TVDPath	MDPath	Formation
4191.00	4194.34	Parkman
4594.00	4597.80	Sussex
7182.00	7249.54	Sharon Springs
7239.00	7349.01	Niobrara A
7286.00	7463.27	Niobrara B

CASING DETAILS			
TVD	MD	Name	Size
1000.00	1000.00	9 5/8"	9-5/8
7316.00	7645.23	7"	7



Anadarko Petroleum Corp

Planning Report

Database:	edmp	Local Co-ordinate Reference:	Well Gobbler 2N-23HZ
Company:	US ROCKIES REGION PLANNING	TVD Reference:	gl + rkb @ 5111.00ft
Project:	COLORADO NORTHERN ZONE - 83	MD Reference:	gl + rkb @ 5111.00ft
Site:	WELD_GOBBLER 14-23HZ PAD	North Reference:	True
Well:	Gobbler 2N-23HZ	Survey Calculation Method:	Minimum Curvature
Wellbore:	Gobbler 2N-23HZ		
Design:	Gobbler 2N-23HZ (wp01)		

Project	COLORADO NORTHERN ZONE - 83		
Map System:	US State Plane 1983	System Datum:	Mean Sea Level
Geo Datum:	North American Datum 1983		
Map Zone:	Colorado Northern Zone		

Site	WELD_GOBBLER 14-23HZ PAD			
Site Position:		Northing:	1,286,429.60 usft	Latitude: 40.117146
From:	Lat/Long	Easting:	3,212,364.65 usft	Longitude: -104.740657
Position Uncertainty:	0.00 ft	Slot Radius:	13-3/16 "	Grid Convergence: 0.49 °

Well	Gobbler 2N-23HZ			
Well Position	+N/-S	-0.02 ft	Northing:	1,286,429.32 usft
	+E/-W	-30.20 ft	Easting:	3,212,334.45 usft
Position Uncertainty		0.00 ft	Wellhead Elevation:	Latitude: 40.117146
				Longitude: -104.740765
				Ground Level: 5,094.00 ft

Wellbore	Gobbler 2N-23HZ				
Magnetics	Model Name	Sample Date	Declination (°)	Dip Angle (°)	Field Strength (nT)
	IGRF2010	3/19/2012	8.72	66.80	52,903

Design	Gobbler 2N-23HZ (wp01)			
Audit Notes:				
Version:	Phase:	PLAN	Tie On Depth:	0.00
Vertical Section:	Depth From (TVD)	+N/-S	+E/-W	Direction
	(ft)	(ft)	(ft)	(°)
	0.00	0.00	0.00	357.81

Plan Sections										
Measured Depth (ft)	Inclination (°)	Azimuth (°)	Vertical Depth (ft)	+N/-S (ft)	+E/-W (ft)	Dogleg Rate (°/100usft)	Build Rate (°/100usft)	Turn Rate (°/100usft)	TFO (°)	Target
0.00	0.00	0.00	0.00	0.00	0.00	0.00	0.00	0.00	0.00	
1,150.00	0.00	0.00	1,150.00	0.00	0.00	0.00	0.00	0.00	0.00	
1,286.34	2.73	224.71	1,286.29	-2.31	-2.28	2.00	2.00	0.00	224.71	
6,730.12	2.73	224.71	6,723.91	-186.35	-184.49	0.00	0.00	0.00	0.00	
7,645.23	89.56	0.31	7,316.00	382.00	-201.00	10.00	9.49	14.82	135.58	
7,650.62	89.52	0.35	7,316.04	387.39	-200.97	1.00	-0.74	0.67	137.61	
11,847.57	89.52	0.35	7,351.00	4,584.12	-175.60	0.00	0.00	0.00	0.00	Gobbler 2N-23HZ BH

Anadarko Petroleum Corp

Planning Report

Database:	edmp	Local Co-ordinate Reference:	Well Gobbler 2N-23HZ
Company:	US ROCKIES REGION PLANNING	TVD Reference:	gl + rkb @ 5111.00ft
Project:	COLORADO NORTHERN ZONE - 83	MD Reference:	gl + rkb @ 5111.00ft
Site:	WELD_GOBBLER 14-23HZ PAD	North Reference:	True
Well:	Gobbler 2N-23HZ	Survey Calculation Method:	Minimum Curvature
Wellbore:	Gobbler 2N-23HZ		
Design:	Gobbler 2N-23HZ (wp01)		

Planned Survey									
Measured Depth (ft)	Inclination (°)	Azimuth (°)	Vertical Depth (ft)	+N/-S (ft)	+E/-W (ft)	Vertical Section (ft)	Dogleg Rate (°/100usft)	Build Rate (°/100usft)	Turn Rate (°/100usft)
0.00	0.00	0.00	0.00	0.00	0.00	0.00	0.00	0.00	0.00
100.00	0.00	0.00	100.00	0.00	0.00	0.00	0.00	0.00	0.00
200.00	0.00	0.00	200.00	0.00	0.00	0.00	0.00	0.00	0.00
300.00	0.00	0.00	300.00	0.00	0.00	0.00	0.00	0.00	0.00
400.00	0.00	0.00	400.00	0.00	0.00	0.00	0.00	0.00	0.00
500.00	0.00	0.00	500.00	0.00	0.00	0.00	0.00	0.00	0.00
600.00	0.00	0.00	600.00	0.00	0.00	0.00	0.00	0.00	0.00
700.00	0.00	0.00	700.00	0.00	0.00	0.00	0.00	0.00	0.00
800.00	0.00	0.00	800.00	0.00	0.00	0.00	0.00	0.00	0.00
900.00	0.00	0.00	900.00	0.00	0.00	0.00	0.00	0.00	0.00
1,000.00	0.00	0.00	1,000.00	0.00	0.00	0.00	0.00	0.00	0.00
9 5/8"									
1,100.00	0.00	0.00	1,100.00	0.00	0.00	0.00	0.00	0.00	0.00
1,150.00	0.00	0.00	1,150.00	0.00	0.00	0.00	0.00	0.00	0.00
Start Build 2.00									
1,200.00	1.00	224.71	1,200.00	-0.31	-0.31	-0.30	2.00	2.00	0.00
1,286.34	2.73	224.71	1,286.29	-2.31	-2.28	-2.22	2.00	2.00	0.00
Start 5443.78 hold at 1286.34 MD									
1,300.00	2.73	224.71	1,299.93	-2.77	-2.74	-2.66	0.00	0.00	0.00
1,400.00	2.73	224.71	1,399.82	-6.15	-6.09	-5.91	0.00	0.00	0.00
1,500.00	2.73	224.71	1,499.71	-9.53	-9.43	-9.16	0.00	0.00	0.00
1,600.00	2.73	224.71	1,599.59	-12.91	-12.78	-12.41	0.00	0.00	0.00
1,700.00	2.73	224.71	1,699.48	-16.29	-16.13	-15.66	0.00	0.00	0.00
1,800.00	2.73	224.71	1,799.37	-19.67	-19.47	-18.91	0.00	0.00	0.00
1,900.00	2.73	224.71	1,899.25	-23.05	-22.82	-22.16	0.00	0.00	0.00
2,000.00	2.73	224.71	1,999.14	-26.43	-26.17	-25.41	0.00	0.00	0.00
2,100.00	2.73	224.71	2,099.03	-29.81	-29.52	-28.66	0.00	0.00	0.00
2,200.00	2.73	224.71	2,198.91	-33.19	-32.86	-31.91	0.00	0.00	0.00
2,300.00	2.73	224.71	2,298.80	-36.58	-36.21	-35.16	0.00	0.00	0.00
2,400.00	2.73	224.71	2,398.69	-39.96	-39.56	-38.41	0.00	0.00	0.00
2,500.00	2.73	224.71	2,498.57	-43.34	-42.90	-41.66	0.00	0.00	0.00
2,600.00	2.73	224.71	2,598.46	-46.72	-46.25	-44.91	0.00	0.00	0.00
2,700.00	2.73	224.71	2,698.35	-50.10	-49.60	-48.16	0.00	0.00	0.00
2,800.00	2.73	224.71	2,798.23	-53.48	-52.95	-51.41	0.00	0.00	0.00
2,900.00	2.73	224.71	2,898.12	-56.86	-56.29	-54.66	0.00	0.00	0.00
3,000.00	2.73	224.71	2,998.01	-60.24	-59.64	-57.92	0.00	0.00	0.00
3,100.00	2.73	224.71	3,097.89	-63.62	-62.99	-61.17	0.00	0.00	0.00
3,200.00	2.73	224.71	3,197.78	-67.00	-66.33	-64.42	0.00	0.00	0.00
3,300.00	2.73	224.71	3,297.67	-70.38	-69.68	-67.67	0.00	0.00	0.00
3,400.00	2.73	224.71	3,397.56	-73.77	-73.03	-70.92	0.00	0.00	0.00
3,500.00	2.73	224.71	3,497.44	-77.15	-76.38	-74.17	0.00	0.00	0.00
3,600.00	2.73	224.71	3,597.33	-80.53	-79.72	-77.42	0.00	0.00	0.00
3,700.00	2.73	224.71	3,697.22	-83.91	-83.07	-80.67	0.00	0.00	0.00
3,800.00	2.73	224.71	3,797.10	-87.29	-86.42	-83.92	0.00	0.00	0.00
3,900.00	2.73	224.71	3,896.99	-90.67	-89.76	-87.17	0.00	0.00	0.00
4,000.00	2.73	224.71	3,996.88	-94.05	-93.11	-90.42	0.00	0.00	0.00
4,100.00	2.73	224.71	4,096.76	-97.43	-96.46	-93.67	0.00	0.00	0.00
4,194.34	2.73	224.71	4,191.00	-100.62	-99.62	-96.73	0.00	0.00	0.00
Parkman									
4,200.00	2.73	224.71	4,196.65	-100.81	-99.81	-96.92	0.00	0.00	0.00
4,300.00	2.73	224.71	4,296.54	-104.19	-103.15	-100.17	0.00	0.00	0.00
4,400.00	2.73	224.71	4,396.42	-107.57	-106.50	-103.42	0.00	0.00	0.00
4,500.00	2.73	224.71	4,496.31	-110.96	-109.85	-106.67	0.00	0.00	0.00
4,597.80	2.73	224.71	4,594.00	-114.26	-113.12	-109.85	0.00	0.00	0.00

Anadarko Petroleum Corp

Planning Report

Database:	edmp	Local Co-ordinate Reference:	Well Gobbler 2N-23HZ
Company:	US ROCKIES REGION PLANNING	TVD Reference:	gl + rkb @ 5111.00ft
Project:	COLORADO NORTHERN ZONE - 83	MD Reference:	gl + rkb @ 5111.00ft
Site:	WELD_GOBBLER 14-23HZ PAD	North Reference:	True
Well:	Gobbler 2N-23HZ	Survey Calculation Method:	Minimum Curvature
Wellbore:	Gobbler 2N-23HZ		
Design:	Gobbler 2N-23HZ (wp01)		

Planned Survey									
Measured Depth (ft)	Inclination (°)	Azimuth (°)	Vertical Depth (ft)	+N/-S (ft)	+E/-W (ft)	Vertical Section (ft)	Dogleg Rate (°/100usft)	Build Rate (°/100usft)	Turn Rate (°/100usft)
Sussex									
4,600.00	2.73	224.71	4,596.20	-114.34	-113.19	-109.92	0.00	0.00	0.00
4,700.00	2.73	224.71	4,696.08	-117.72	-116.54	-113.17	0.00	0.00	0.00
4,800.00	2.73	224.71	4,795.97	-121.10	-119.89	-116.42	0.00	0.00	0.00
4,900.00	2.73	224.71	4,895.86	-124.48	-123.24	-119.67	0.00	0.00	0.00
5,000.00	2.73	224.71	4,995.74	-127.86	-126.58	-122.92	0.00	0.00	0.00
5,100.00	2.73	224.71	5,095.63	-131.24	-129.93	-126.17	0.00	0.00	0.00
5,200.00	2.73	224.71	5,195.52	-134.62	-133.28	-129.42	0.00	0.00	0.00
5,300.00	2.73	224.71	5,295.40	-138.00	-136.62	-132.67	0.00	0.00	0.00
5,400.00	2.73	224.71	5,395.29	-141.38	-139.97	-135.92	0.00	0.00	0.00
5,500.00	2.73	224.71	5,495.18	-144.76	-143.32	-139.17	0.00	0.00	0.00
5,600.00	2.73	224.71	5,595.06	-148.15	-146.67	-142.42	0.00	0.00	0.00
5,700.00	2.73	224.71	5,694.95	-151.53	-150.01	-145.67	0.00	0.00	0.00
5,800.00	2.73	224.71	5,794.84	-154.91	-153.36	-148.92	0.00	0.00	0.00
5,900.00	2.73	224.71	5,894.72	-158.29	-156.71	-152.17	0.00	0.00	0.00
6,000.00	2.73	224.71	5,994.61	-161.67	-160.05	-155.42	0.00	0.00	0.00
6,100.00	2.73	224.71	6,094.50	-165.05	-163.40	-158.67	0.00	0.00	0.00
6,200.00	2.73	224.71	6,194.38	-168.43	-166.75	-161.92	0.00	0.00	0.00
6,300.00	2.73	224.71	6,294.27	-171.81	-170.10	-165.17	0.00	0.00	0.00
6,400.00	2.73	224.71	6,394.16	-175.19	-173.44	-168.42	0.00	0.00	0.00
6,500.00	2.73	224.71	6,494.05	-178.57	-176.79	-171.68	0.00	0.00	0.00
6,600.00	2.73	224.71	6,593.93	-181.95	-180.14	-174.93	0.00	0.00	0.00
6,700.00	2.73	224.71	6,693.82	-185.34	-183.48	-178.18	0.00	0.00	0.00
6,730.12	2.73	224.71	6,723.91	-186.35	-184.49	-179.15	0.00	0.00	0.00
Start DLS 10.00 TFO 135.58									
6,800.00	5.39	339.64	6,793.68	-184.46	-186.81	-177.17	10.00	3.81	164.47
6,900.00	15.16	353.26	6,891.97	-167.03	-189.98	-159.63	10.00	9.77	13.62
7,000.00	25.11	356.25	6,985.74	-132.79	-192.91	-125.31	10.00	9.95	2.99
7,100.00	35.08	357.61	7,072.15	-82.78	-195.51	-75.23	10.00	9.98	1.36
7,200.00	45.07	358.42	7,148.57	-18.51	-197.69	-10.93	10.00	9.99	0.81
7,249.54	50.02	358.72	7,182.00	18.01	-198.60	25.60	10.00	9.99	0.61
Sharon Springs									
7,300.00	55.06	358.99	7,212.68	58.05	-199.39	65.64	10.00	9.99	0.53
7,349.01	59.96	359.22	7,239.00	99.37	-200.04	106.96	10.00	9.99	0.47
Niobrara A									
7,400.00	65.05	359.44	7,262.53	144.58	-200.56	152.16	10.00	9.99	0.42
7,463.27	71.38	359.68	7,286.00	203.31	-201.01	210.85	10.00	9.99	0.39
Niobrara B									
7,500.00	75.05	359.81	7,296.61	238.46	-201.17	245.99	10.00	9.99	0.36
7,600.00	85.04	0.16	7,313.87	336.83	-201.18	344.29	10.00	9.99	0.34
7,645.23	89.56	0.31	7,316.00	382.00	-201.00	389.41	10.00	9.99	0.33
Start DLS 1.00 TFO 137.61 - 7"									
7,650.62	89.52	0.35	7,316.04	387.39	-200.97	394.80	1.00	-0.74	0.67
Start 4196.95 hold at 7650.62 MD									
7,700.00	89.52	0.35	7,316.45	436.77	-200.67	444.13	0.00	0.00	0.00
7,800.00	89.52	0.35	7,317.29	536.76	-200.07	544.03	0.00	0.00	0.00
7,900.00	89.52	0.35	7,318.12	636.76	-199.46	643.92	0.00	0.00	0.00
8,000.00	89.52	0.35	7,318.95	736.75	-198.86	743.82	0.00	0.00	0.00
8,100.00	89.52	0.35	7,319.79	836.75	-198.25	843.72	0.00	0.00	0.00
8,200.00	89.52	0.35	7,320.62	936.74	-197.65	943.62	0.00	0.00	0.00
8,300.00	89.52	0.35	7,321.45	1,036.73	-197.04	1,043.52	0.00	0.00	0.00
8,400.00	89.52	0.35	7,322.28	1,136.73	-196.44	1,143.42	0.00	0.00	0.00
8,500.00	89.52	0.35	7,323.12	1,236.72	-195.84	1,243.31	0.00	0.00	0.00

Anadarko Petroleum Corp

Planning Report

Database:	edmp	Local Co-ordinate Reference:	Well Gobbler 2N-23HZ
Company:	US ROCKIES REGION PLANNING	TVD Reference:	gl + rkb @ 5111.00ft
Project:	COLORADO NORTHERN ZONE - 83	MD Reference:	gl + rkb @ 5111.00ft
Site:	WELD_GOBBLER 14-23HZ PAD	North Reference:	True
Well:	Gobbler 2N-23HZ	Survey Calculation Method:	Minimum Curvature
Wellbore:	Gobbler 2N-23HZ		
Design:	Gobbler 2N-23HZ (wp01)		

Planned Survey										
Measured Depth (ft)	Inclination (°)	Azimuth (°)	Vertical Depth (ft)	+N/-S (ft)	+E/-W (ft)	Vertical Section (ft)	Dogleg Rate (°/100usft)	Build Rate (°/100usft)	Turn Rate (°/100usft)	
8,600.00	89.52	0.35	7,323.95	1,336.72	-195.23	1,343.21	0.00	0.00	0.00	
8,700.00	89.52	0.35	7,324.78	1,436.71	-194.63	1,443.11	0.00	0.00	0.00	
8,800.00	89.52	0.35	7,325.62	1,536.71	-194.02	1,543.01	0.00	0.00	0.00	
8,900.00	89.52	0.35	7,326.45	1,636.70	-193.42	1,642.91	0.00	0.00	0.00	
9,000.00	89.52	0.35	7,327.28	1,736.70	-192.81	1,742.81	0.00	0.00	0.00	
9,100.00	89.52	0.35	7,328.12	1,836.69	-192.21	1,842.70	0.00	0.00	0.00	
9,200.00	89.52	0.35	7,328.95	1,936.69	-191.60	1,942.60	0.00	0.00	0.00	
9,300.00	89.52	0.35	7,329.78	2,036.68	-191.00	2,042.50	0.00	0.00	0.00	
9,400.00	89.52	0.35	7,330.61	2,136.68	-190.40	2,142.40	0.00	0.00	0.00	
9,500.00	89.52	0.35	7,331.45	2,236.67	-189.79	2,242.30	0.00	0.00	0.00	
9,600.00	89.52	0.35	7,332.28	2,336.67	-189.19	2,342.20	0.00	0.00	0.00	
9,700.00	89.52	0.35	7,333.11	2,436.66	-188.58	2,442.09	0.00	0.00	0.00	
9,800.00	89.52	0.35	7,333.95	2,536.66	-187.98	2,541.99	0.00	0.00	0.00	
9,900.00	89.52	0.35	7,334.78	2,636.65	-187.37	2,641.89	0.00	0.00	0.00	
10,000.00	89.52	0.35	7,335.61	2,736.64	-186.77	2,741.79	0.00	0.00	0.00	
10,100.00	89.52	0.35	7,336.44	2,836.64	-186.16	2,841.69	0.00	0.00	0.00	
10,200.00	89.52	0.35	7,337.28	2,936.63	-185.56	2,941.58	0.00	0.00	0.00	
10,300.00	89.52	0.35	7,338.11	3,036.63	-184.96	3,041.48	0.00	0.00	0.00	
10,400.00	89.52	0.35	7,338.94	3,136.62	-184.35	3,141.38	0.00	0.00	0.00	
10,500.00	89.52	0.35	7,339.78	3,236.62	-183.75	3,241.28	0.00	0.00	0.00	
10,600.00	89.52	0.35	7,340.61	3,336.61	-183.14	3,341.18	0.00	0.00	0.00	
10,700.00	89.52	0.35	7,341.44	3,436.61	-182.54	3,441.08	0.00	0.00	0.00	
10,800.00	89.52	0.35	7,342.27	3,536.60	-181.93	3,540.97	0.00	0.00	0.00	
10,900.00	89.52	0.35	7,343.11	3,636.60	-181.33	3,640.87	0.00	0.00	0.00	
11,000.00	89.52	0.35	7,343.94	3,736.59	-180.72	3,740.77	0.00	0.00	0.00	
11,100.00	89.52	0.35	7,344.77	3,836.59	-180.12	3,840.67	0.00	0.00	0.00	
11,200.00	89.52	0.35	7,345.61	3,936.58	-179.52	3,940.57	0.00	0.00	0.00	
11,300.00	89.52	0.35	7,346.44	4,036.58	-178.91	4,040.47	0.00	0.00	0.00	
11,400.00	89.52	0.35	7,347.27	4,136.57	-178.31	4,140.36	0.00	0.00	0.00	
11,500.00	89.52	0.35	7,348.11	4,236.57	-177.70	4,240.26	0.00	0.00	0.00	
11,600.00	89.52	0.35	7,348.94	4,336.56	-177.10	4,340.16	0.00	0.00	0.00	
11,700.00	89.52	0.35	7,349.77	4,436.55	-176.49	4,440.06	0.00	0.00	0.00	
11,800.00	89.52	0.35	7,350.60	4,536.55	-175.89	4,539.96	0.00	0.00	0.00	
11,847.57	89.52	0.35	7,351.00	4,584.12	-175.60	4,587.48	0.00	0.00	0.00	
TD at 11847.57 - Gobbler 2N-23HZ BHL										

Design Targets									
Target Name	Dip Angle (°)	Dip Dir. (°)	TVD (ft)	+N/-S (ft)	+E/-W (ft)	Northing (usft)	Easting (usft)	Latitude	Longitude
Gobbler 2N-23HZ BHL	0.00	0.00	7,351.00	4,584.12	-175.60	1,291,011.76	3,212,119.60	40.129730	-104.741393
- hit/miss target									
- Shape									
- plan hits target center									
- Point									

Casing Points					
Measured Depth (ft)	Vertical Depth (ft)	Name	Casing Diameter (")	Hole Diameter (")	
1,000.00	1,000.00	9 5/8"	9-5/8	12-1/4	
7,645.23	7,316.00	7"	7	8-3/4	

Anadarko Petroleum Corp

Planning Report

Database:	edmp	Local Co-ordinate Reference:	Well Gobbler 2N-23HZ
Company:	US ROCKIES REGION PLANNING	TVD Reference:	gl + rkb @ 5111.00ft
Project:	COLORADO NORTHERN ZONE - 83	MD Reference:	gl + rkb @ 5111.00ft
Site:	WELD_GOBBLER 14-23HZ PAD	North Reference:	True
Well:	Gobbler 2N-23HZ	Survey Calculation Method:	Minimum Curvature
Wellbore:	Gobbler 2N-23HZ		
Design:	Gobbler 2N-23HZ (wp01)		

Formations						
Measured Depth (ft)	Vertical Depth (ft)	Name	Lithology	Dip (°)	Dip Direction (°)	
4,194.34	4,191.00	Parkman				
4,597.80	4,594.00	Sussex				
7,249.54	7,182.00	Sharon Springs				
7,349.01	7,239.00	Niobrara A				
7,463.27	7,286.00	Niobrara B				

Plan Annotations					
Measured Depth (ft)	Vertical Depth (ft)	Local Coordinates			
		+N/-S (ft)	+E/-W (ft)	Comment	
1,150.00	1,150.00	0.00	0.00	Start Build 2.00	
1,286.34	1,286.29	-2.31	-2.28	Start 5443.78 hold at 1286.34 MD	
6,730.12	6,723.91	-186.35	-184.49	Start DLS 10.00 TFO 135.58	
7,645.23	7,316.00	382.00	-201.00	Start DLS 1.00 TFO 137.61	
7,650.62	7,316.04	387.39	-200.97	Start 4196.95 hold at 7650.62 MD	
11,847.57	7,351.00	4,584.12	-175.60	TD at 11847.57	