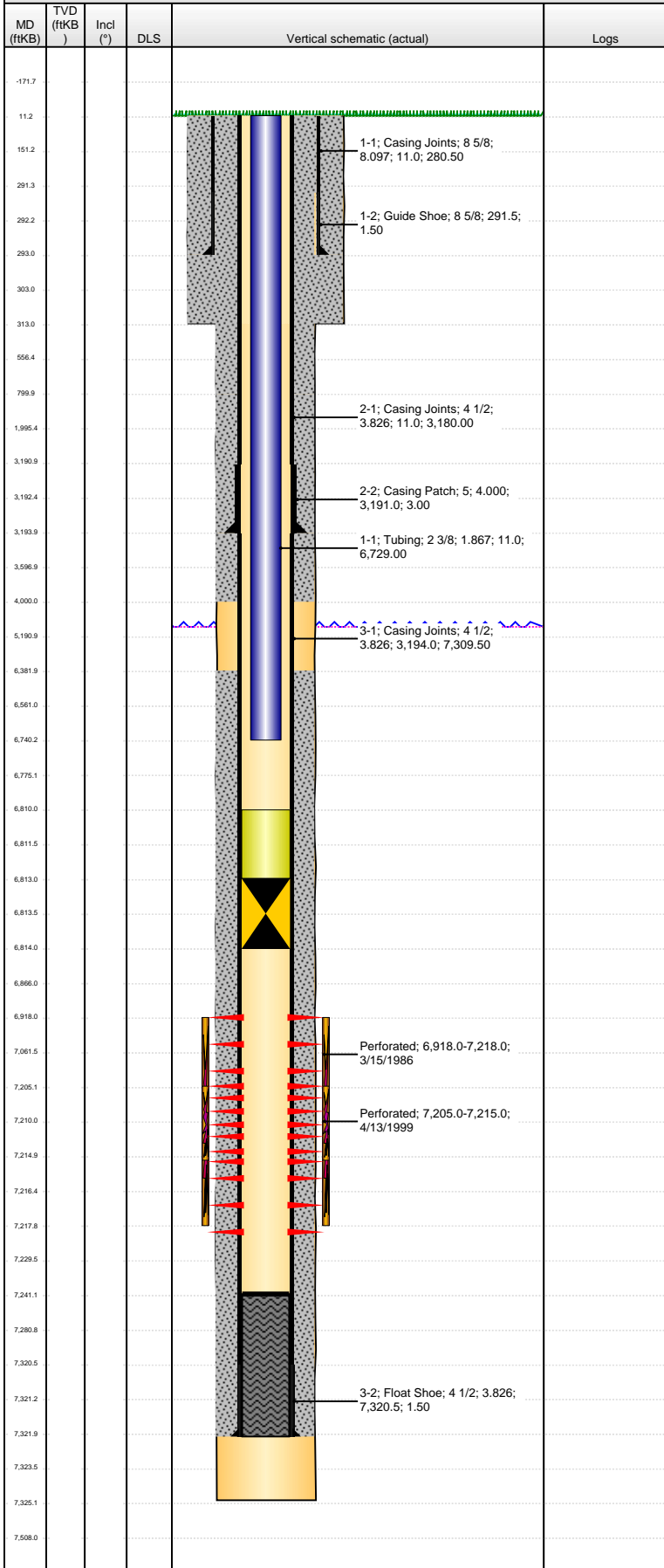


Well Name: ULRICH 21-01

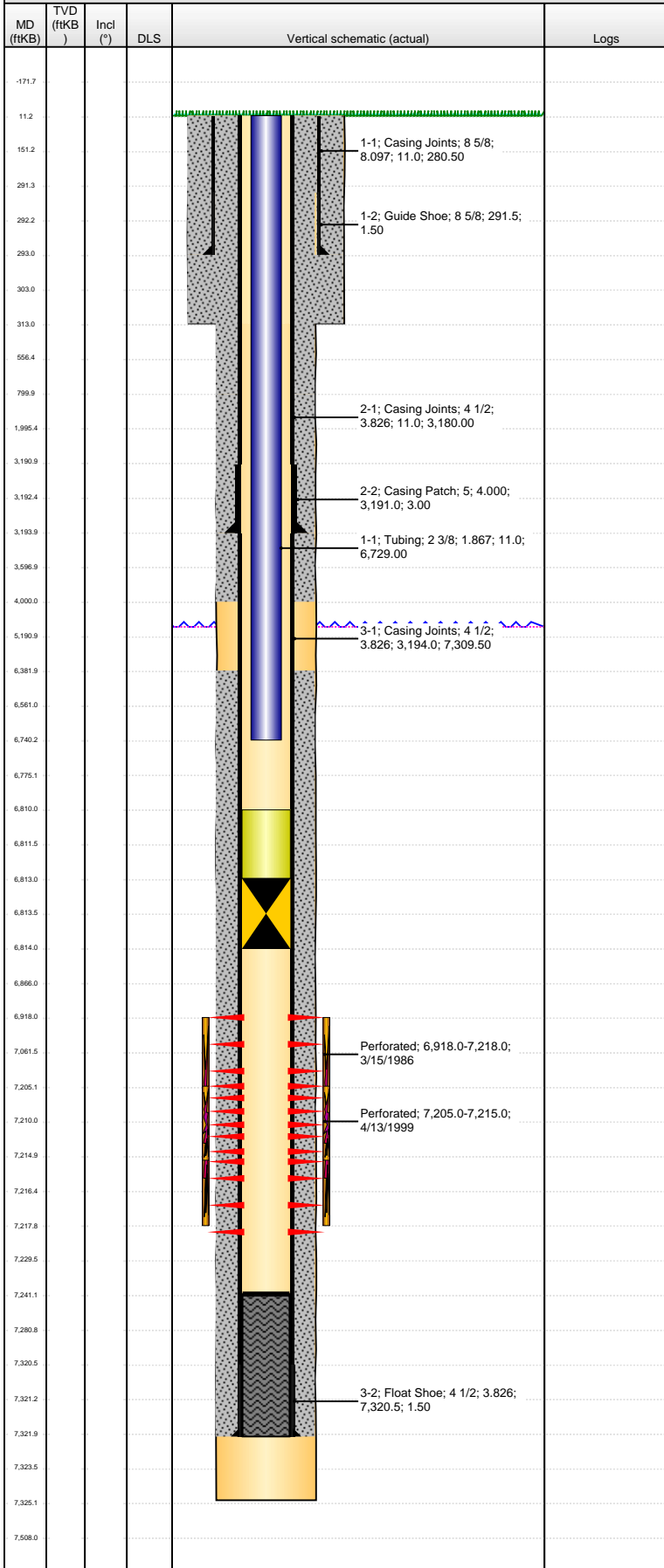
VERTICAL - ORIGINAL HOLE, 12/4/2012 11:10:49 AM



Well Header			
API 05-123-13006	Business Unit WATTENBERG	District 15	Well Config VERTICAL
Original KB Elevation (ft) 4,850.00	KB - GL / MSL (ftKB) 11.00	Spud Date 2/20/1986	P & A Date
Comment WELL SHUT IN SINCE 2-21-09 CBL VERIFIED CEMENT FROM 3200' TO SURFACE ON 2-21-09 CASING FOUND TO BE PARTED AT 3230' ON 2-21-09 ANNULUS FILLED WITH CEMENT 4000' TO SURFACE ON 2-18-09 Directions To Well			
Congressional Location			
Quarter 1	Quarter 2	Quarter 3 NW	Quarter 4 NE
Section 21		Township 4 N	Range 65 W
Bottom Hole Location			
North-South Distance (ft)		From N or S Line	East-West Distance (ft)
		From E or W Line	
Plug Back Total Depths			
Date	Depth (ftKB)	Method	Com
2/28/1986	7,286.0	TAG	
3/5/1986	7,241.0	CASED HOLE LOG	CBL DEPTH LOGGER
Wellbore Sections			
Section Des	Size (in)	Act Top (ftKB)	Act Btm (ftKB)
SURFACE	12 1/4	11.0	313.0
PRODUCTION	7 7/8	313.0	7,325.0
Zone Statuses			
Zone Name	Status Date	Status	Job
NIOBRARA	4/2/1986	PR	DRILLING/COMPLETION - ORIGINAL, 2/20/1986 00:00
NIOBRARA	2/21/2009	SI	REMEDIAL CEMENTING, 2/12/2009 00:00
CODELL	4/2/1986	PR	DRILLING/COMPLETION - ORIGINAL, 2/20/1986 00:00
CODELL	2/21/2009	SI	REMEDIAL CEMENTING, 2/12/2009 00:00
Casing Strings			
Surface, 293.0ftKB			
Casing Description Surface	Run Date 2/20/1986	OD (in) 8 5/8	Wt/Len (l...) 24.00
		Grade J-55	Top (ftKB) 11.0
			Set Depth... 293.0
Production, 3,194.0ftKB			
Casing Description Production	Run Date 4/18/1999	OD (in) 4 1/2	Wt/Len (l...) 15.10
		Grade E	Top (ftKB) 11.0
			Set Depth... 3,194.0
Production, 7,322.0ftKB			
Casing Description Production	Run Date 2/28/1986	OD (in) 4 1/2	Wt/Len (l...) 15.10
		Grade E	Top (ftKB) 11.0
			Set Depth... 7,322.0
Cement			
Description Surface Casing Cement		Top Depth (ftKB) 11.0	Bottom Depth (ftKB) 293.0
Description PRODUCTION CASING CEMENT		Top Depth (ftKB) 6,382.0	Bottom Depth (ftKB) 7,322.0
Description Remedial Casing Cement		Top Depth (ftKB) 11.0	Bottom Depth (ftKB) 800.0
Description Remedial Casing Cement		Top Depth (ftKB) 800.0	Bottom Depth (ftKB) 3,194.0
Description Remedial Casing Cement		Top Depth (ftKB) 3,194.0	Bottom Depth (ftKB) 4,000.0
Tubing Components			
Item Des	OD (in)	Wt (lb/ft)	Grade
Tubing	2 3/8	4.70	C-90
		Jts 218	Len (ft) 6,729.00
		Btm (ftKB) 6,740.0	Btm (TVD) (ftKB)
Perforation Data			
Zone	Bnch/St g	Entered Shot Total	Top (ftKB)
NIOBRARA-CODELL, ORIGINAL...		17	6,918.00
CODELL, ORIGINAL HOLE		40	7,205.00
			Btm (ftKB) 7,215.00
			Date 3/15/1986
			4/13/1999
Stimulations & Treatments			
Date 3/17/1996	Zone NIOBRARA-CODELL, ORIGINAL HOLE	Primary Job Type DRILLING/COMPLETION - ORIGINAL	
Technical Result		Tech Result Details	Tech Result Note
Comment NIO-CDL LIMITED ENTRY FRAC			

Well Name: ULRICH 21-01

VERTICAL - ORIGINAL HOLE, 12/4/2012 11:10:49 AM



Stimulations & Treatments				
Date	Zone	Primary Job Type		
4/13/1999	CODELL, ORIGINAL HOLE	RE-FRAC & RECOMPLETE		
Technical Result		Tech Result Details		Tech Result Note
Comment SPLIT COLLAR, PARTED CASING AT APPROX. 3200' REQUIRING CASING REPAIR				
Other In Hole				
Run Date	Des	OD (in)	Top (ftKB)	Btm (ftKB)
2/13/2009	Retrievable Bridge Plug	3.826	6,813.0	6,814.0
2/13/2009	Sand plug	3.826	6,810.0	6,813.0
Logs				
Date	Type	Top (ftKB)	Btm (ftKB)	
2/27/1986	COMPENSATED DENSITY	3,794.0	7,320.0	
2/27/1986	INDUCTION	293.0	7,323.0	
3/5/1986	CBL/CCL/GR	6,080.0	7,236.0	
2/21/2009	CEMENT BOND	11.0	3,200.0	