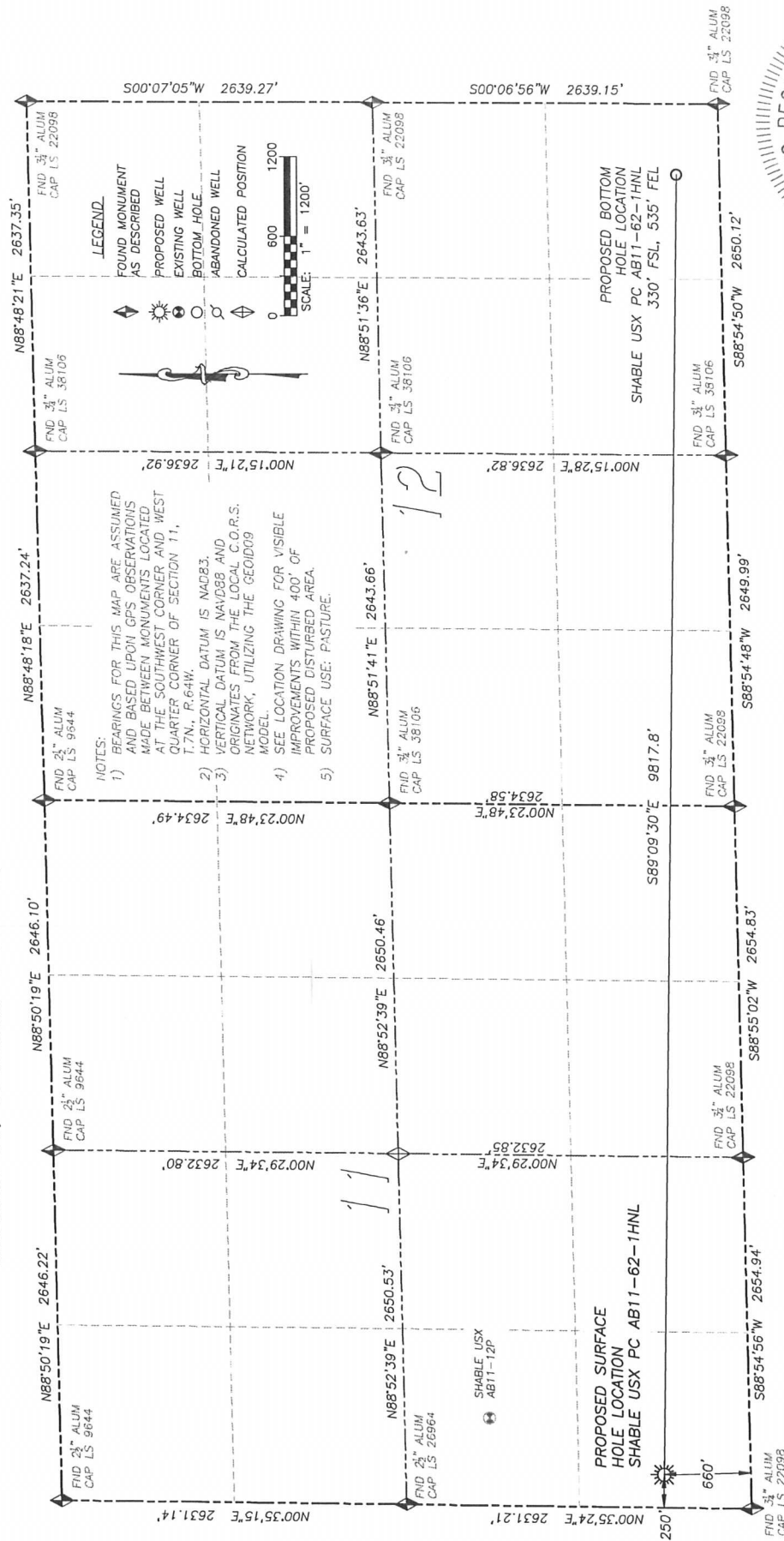


DALEY LAND SURVEYING, INC.	PARKER, CO. 80134	303 953 9841
----------------------------	-------------------	--------------



NAD 83 LATITUDE AND LONGITUDE

BOTTOM HOLE: N40.58156°
LATITUDE: W104.48987°
LONGITUDE: 330' FSL.
FOOTAGE:

NEAREST EXISTING WELL:
SHABLE USX AB11-12P
LATITUDE: N40.58589°
LONGITUDE: W104.52362°
ELEVATION: 4823'
1395' NORTH

IN ACCORDANCE WITH A REQUEST FROM RYAN HAWKINS OF NOBLE ENERGY INC., DALEY LAND SURVEYING, INC. HAS DETERMINED THE SURFACE LOCATION OF THE SHABLE UX PC AB11-62--THNL WELL TO BE 660' FSL, 250' FWL, AS MEASURED AT NINETY (90) DEGREES FROM THE SECTION LINES OF SECTION 11, TOWNSHIP 7 NORTH, RANGE 64 WEST OF THE 6TH PRINCIPAL MERIDIAN, WELD COUNTY, COLORADO. THE BOTTOM HOLE LOCATION, PROVIDED BY THE CLIENT, IS TO BE 330' FSL, 535' FSL OF SECTION 12, T.7N., R.64W.

I HEREBY CERTIFY THAT THIS WELL LOCATION CERTIFICATE WAS PREPARED BY ME OR UNDER MY DIRECT SUPERVISION, THAT THE WORK WAS COMPLETED ON 5/8/2012 FOR AND ON BEHALF OF NOBLE ENERGY, INC., AND THAT THIS MAP DOES NOT REPRESENT A BOUNDARY SURVEY, IT IS NOT A LAND SURVEY PLAT OR AN IMPROVEMENT SURVEY PLAT AND IT IS NOT TO BE RELIED UPON FOR THE ESTABLISHMENT OF FENCE, BUILDING OR OTHER FUTURE IMPROVEMENT LINES.

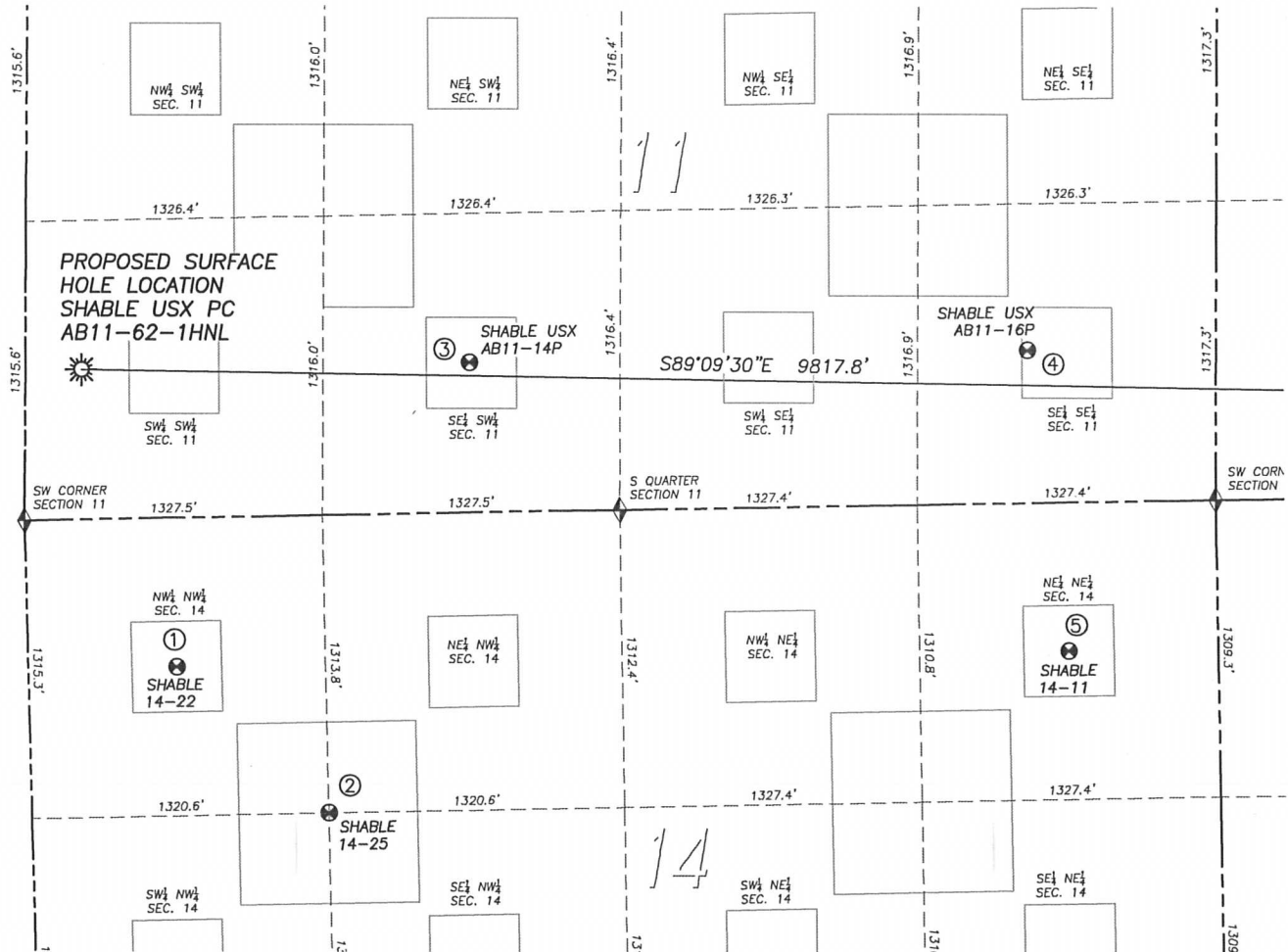


FOR AND ON BEHALF OF
DALEY LAND SURVEYING INC.,
Robert Daley, PLS 35597

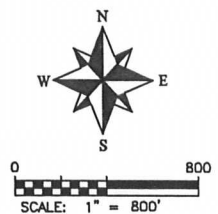
NOTICE: According to Colorado law you **MUST** commence any legal action based upon any defect in this W.L.C. within three years after you first discover such defect. In no event may any action based upon any such defect in this W.L.C. be commenced more than ten years from the date of the certification shown hereon.

SITE SKETCH SHABLE USX PC AB11-62-1HNL

SECTION 11, TOWNSHIP 7 NORTH, RANGE 64 WEST OF THE 6TH PRINCIPAL MERIDIAN



	Well Name	Qtr - Qtr	Footage		Latitude	Longitude	Elevation	PDOP
1	SHABLE 14-22	NW NW 14	657' FNL	660' FWL	40.57865	-104.52374	4814	1.7
2	SHABLE 14-25	NW NW 14	1313' FNL	1321' FWL	40.57686	-104.52134	4813	2.0
3	SHABLE USX AB11-14P	SE SW 11	661' FSL	1995' FWL	40.58229	-104.51897	4821	1.5
4	SHABLE USX AB11-16	SE SE 11	671' FSL	840' FEL	40.58237	-104.51002	4831	1.5
5	SHABLE 14-11	NE NE 14	656' FNL	663' FEL	40.57874	-104.50942	4826	1.4



LEGEND

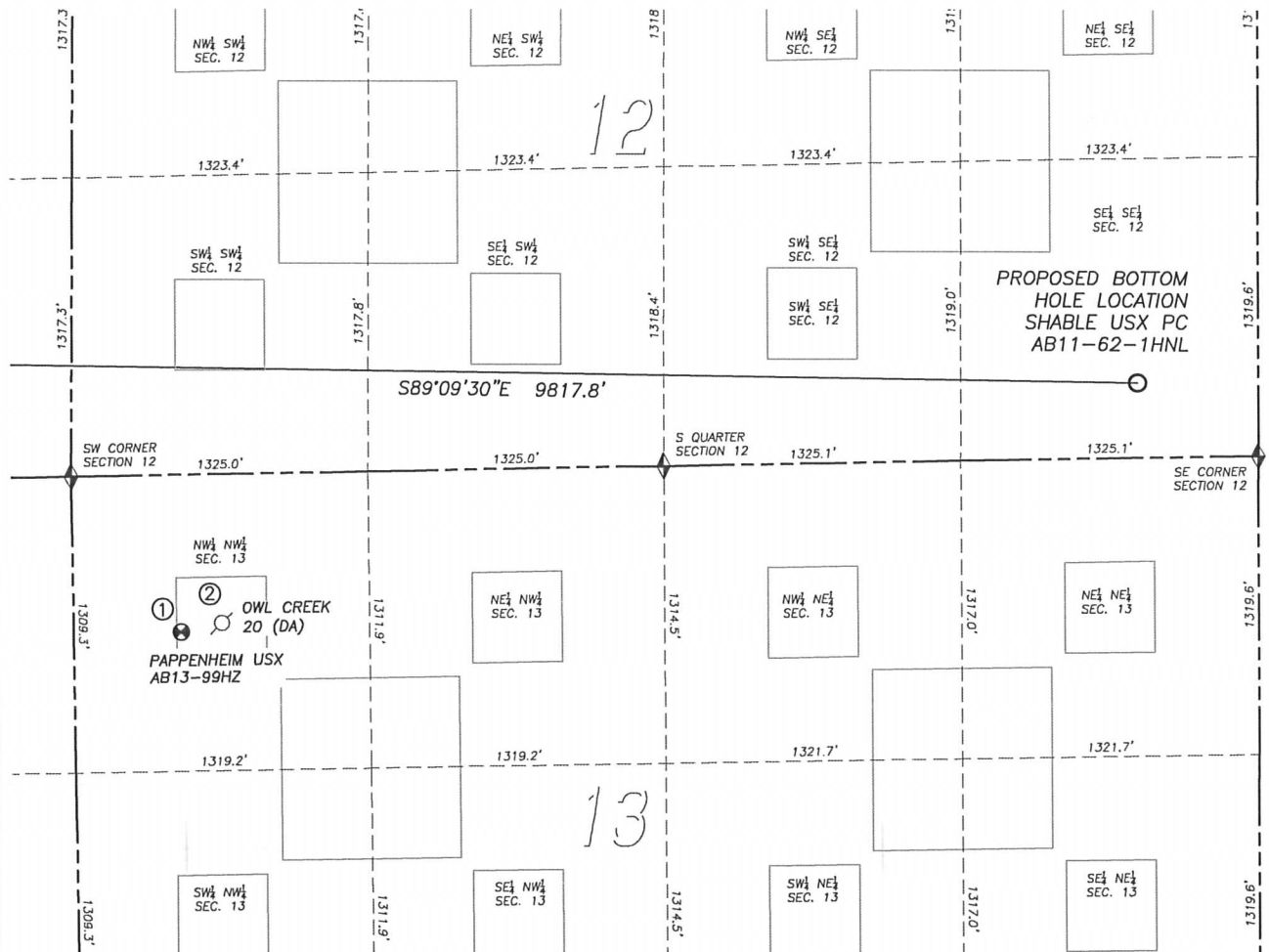
- ◆ FOUND MONUMENT AS DESCRIBED
- ☀ PROPOSED WELL
- EXISTING WELL
- BOTTOM HOLE
- ABANDONED WELL
- ◆ CALCULATED POSITION

NOTES:

1. THIS DOES NOT REPRESENT A BOUNDARY SURVEY
2. HORIZONTAL DATUM IS NAD83
3. VERTICAL DATUM IS NAVD88 AND ORIGINATES FROM THE LOCAL C.O.R.S. NETWORK, UTILIZING THE GEOID09 MODEL.

SITE SKETCH SHABLE USX PC AB11-62-1HNL

SECTION 11, TOWNSHIP 7 NORTH, RANGE 64 WEST OF THE 6TH PRINCIPAL MERIDIAN



	Well Name	Qtr - Qtr	Footage		Latitude	Longitude	Elevation	PDOP
1	PAPPENHEIM USX AB13-99HZ	NW NW 13	695' FNL	479' FWL	40.57865	-104.50531	4833	1.6
2	OWL CREEK 20 (DA)	NW NW 13	FROM COGCC DATABASE		40.57882	-104.50462	4847	



0 800
SCALE: 1" = 800'

LEGEND

- FOUND MONUMENT AS DESCRIBED
- PROPOSED WELL
- EXISTING WELL
- BOTTOM HOLE
- ABANDONED WELL
- CALCULATED POSITION

NOTES:
 1. THIS DOES NOT REPRESENT A BOUNDARY SURVEY
 2. HORIZONTAL DATUM IS NAD83
 3. VERTICAL DATUM IS NAVD88 AND ORIGINATES FROM THE LOCAL C.O.R.S. NETWORK, UTILIZING THE GEOID09 MODEL.