

Northern Region Drilling

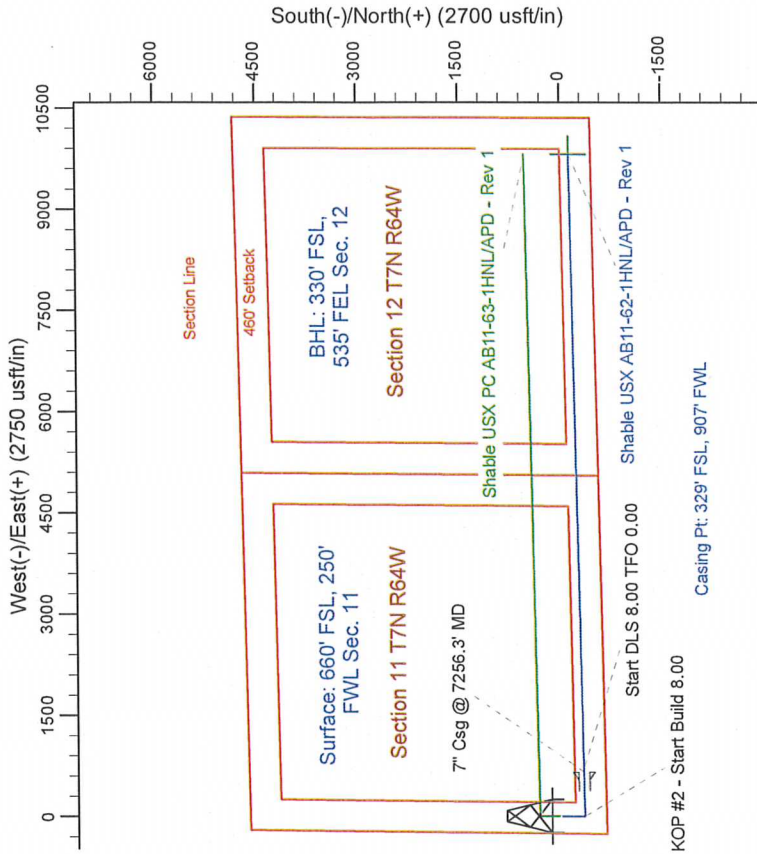
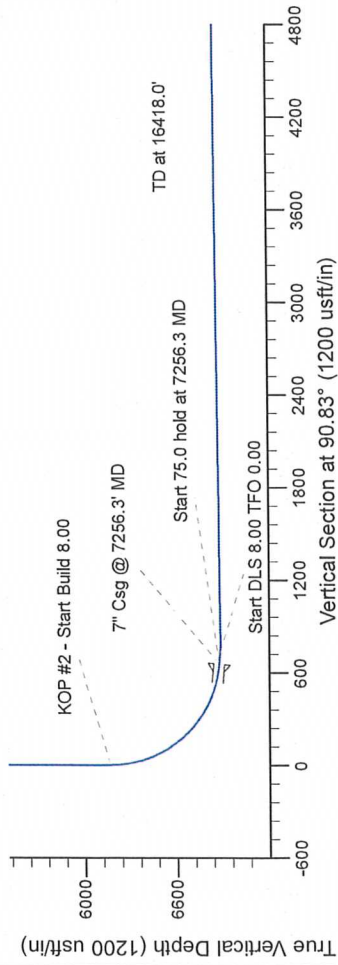
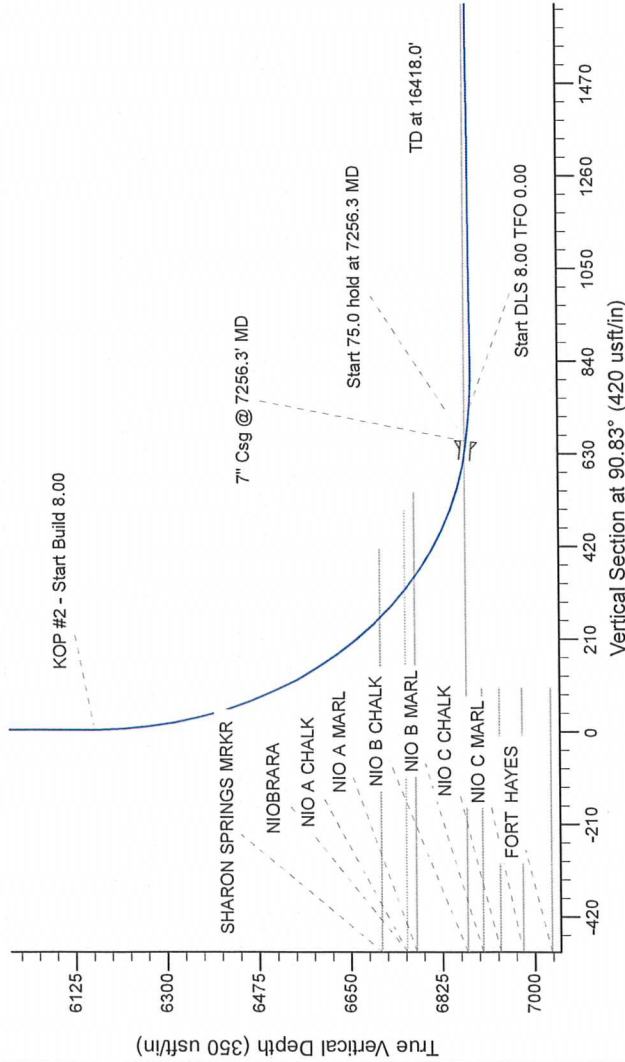
Project: Wattenberg Field
Site: AB (Sec.11-T7N-R64W) Weld County, CO
Well: Shable USX AB11-62-1HNL
Wellbore: Original Drilling
Design: APD - Rev 1

Geodetic System: US State Plane 1983
Datum: North American Datum 1983
Ellipsoid: GRS 1980
Zone: Colorado Northern Zone
System Datum: Mean Sea Level

SECTION DETAILS

Sec	MD	Inc	Azi	TVD	+N/S	+E/W	Dleg	TFace	VSecl	Target
1	0.0	0.00	0.00	0.0	0.0	0.0	0.00	0.00	0.0	
2	1800.0	0.00	0.00	1800.0	0.0	0.0	0.00	0.00	0.0	
3	2280.1	12.00	180.00	2276.6	-50.1	0.0	2.50	180.00	0.7	
4	3385.0	0.00	0.00	3357.4	-279.9	0.0	0.00	180.00	4.0	
5	3855.2	0.00	0.00	3834.0	-330.0	0.0	0.00	180.00	4.8	
6	5193.8	95.00	88.90	5178.9	-317.4	653.7	8.00	88.90	658.2	
7	7239.3	85.00	88.90	6976.6	-316.0	728.4	8.00	0.00	732.8	
8	7398.8	90.40	88.90	6885.4	-314.7	785.8	8.00	0.00	800.2	
10	16418.0	90.40	88.90	6822.5	-141.6	9813.0	0.00	0.00	9814.1	

Shable USX PC AB11-62-1HNL BHL 330'FSL, 535'FEL



T

G

M

Azimuths to Grid North
True North: -0.63°
Magnetic North: 7.89°

Magnetic Field
Strength: 53132.4snT
Dip Angle: 67.20°
Date: 10/25/2012
Model: IGRF200510

WELL DETAILS: Shable USX AB11-62-1HNL		
Northing	Ground Level	Longitude
1456443.18	4818.0	-104.525190
Eastings	Latitude	
3270799.35	40.582250	
Plan: APD - Rev 1 (Shable USX AB11-62-1HNL/Original Drilling)		
Created By: Carrie Willers	Date: 15/29, October 31 2012	
Checked: _____	Date: _____	
Reviewed: _____	Date: _____	
Approved: _____	Date: _____	