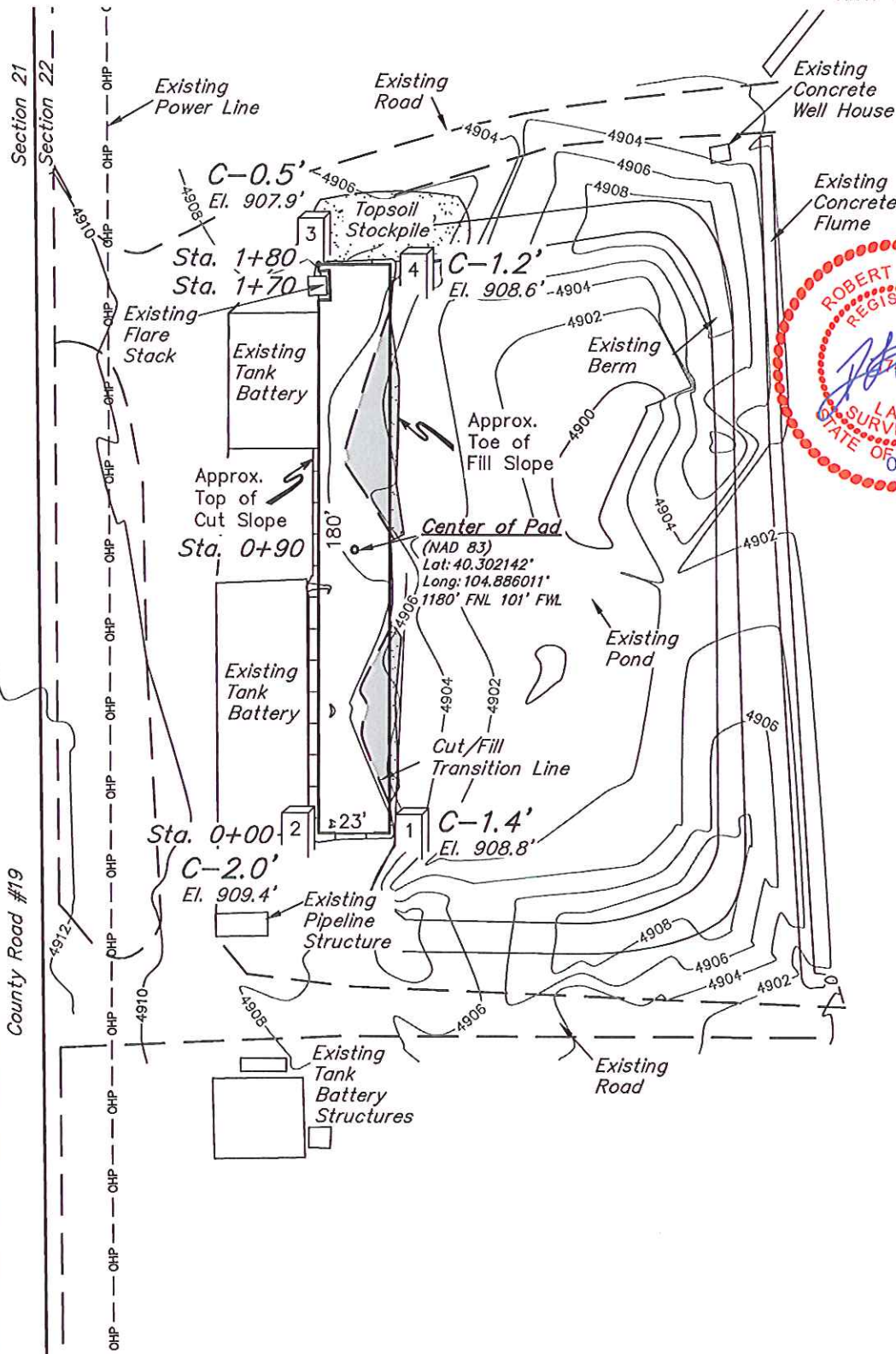
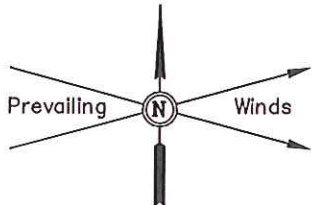


**GREAT WESTERN OIL & GAS COMPANY**  
**CONSTRUCTION LAYOUT FOR**  
**DUTTON HD OFF-SITE TANK BATTERY #22-30D**  
**SECTION 22, T4N, R67W, 6th. P.M.**  
**NW 1/4 NW 1/4**

**FIGURE #1**

SCALE: 1" = 50'  
 DATE: 10-02-12  
 DRAWN BY: H.K.W.  
 REV: 11-13-12  
 REV: 01-02-13



Elev. Ungraded Ground At Center of Tank Pad = 4907.9'  
 FINISHED GRADE ELEV. AT CENTER OF TANK PAD = 4907.4'

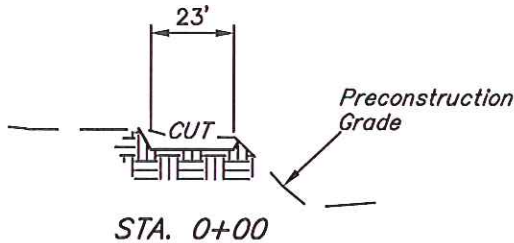
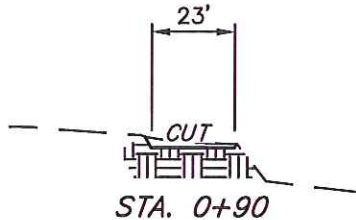
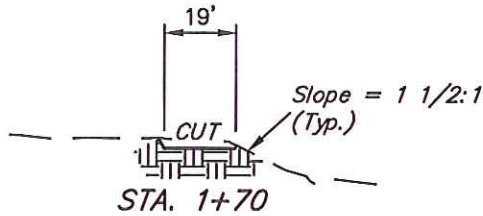
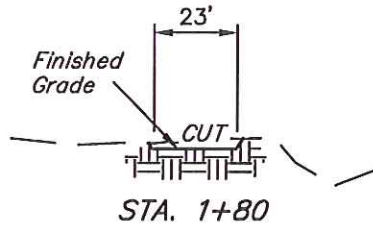
**UINTAH ENGINEERING & LAND SURVEYING**  
 85 So. 200 East \* Vernal, Utah 84078 \* (435) 789-1017

1" = 20'  
 X-Section  
 Scale  
 1" = 50'

**GREAT WESTERN OIL & GAS COMPANY**  
**CONSTRUCTION LAYOUT CROSS SECTIONS FOR**  
**DUTTON HD OFF-SITE TANK BATTERY #22-30D**  
**SECTION 22, T4N, R67W, 6th. P.M.**  
**NW 1/4 NW 1/4**

**FIGURE #2**

DATE: 10-02-12  
 DRAWN BY: H.K.W.  
 REV: 11-13-12  
 REV: 01-02-13



**NOTE:**

Topsoil should not be Stripped Below Finished Grade on Substructure Area.

APPROXIMATE ACREAGES  
 TANK PAD DISTURBANCE = ± 0.112 ACRES

\* NOTE:  
 FILL QUANTITY INCLUDES  
 5% FOR COMPACTION

APPROXIMATE YARDAGES

(6") Topsoil Stripping	=	90 Cu. Yds.
Remaining Location	=	60 Cu. Yds.
<b>TOTAL CUT</b>	<b>=</b>	<b>150 CU. YDS.</b>
<b>FILL</b>	<b>=</b>	<b>60 CU. YDS.</b>

EXCESS MATERIAL	=	90 Cu. Yds.
Topsoil	=	90 Cu. Yds.

EXCESS UNBALANCE = 0 Cu. Yds.  
 (After Interim Rehabilitation)

**UINTAH ENGINEERING & LAND SURVEYING**  
 85 So. 200 East \* Vernal, Utah 84078 \* (435) 789-1017



# GREAT WESTERN OIL & GAS COMPANY

## ADDENDUM TO LEGAL PLAT FOR

DUTTON HD OFF-SITE TANK BATTERY #22-30D  
 SECTION 22, T4N, R67W, 6th. P.M.  
 NW 1/4 NW 1/4

SCALE: 1" = 200'  
 DATE: 01-03-13  
 DRAWN BY: H.K.W.



LINE TABLE		
LINE	DIRECTION	LENGTH
L1	N89°E	97'
L2	SOUTH	257'
L3	SOUTH	169'
L4	SOUTH	90'
L5	SOUTH	69'
L6	SOUTH	45'
L7	S33°W	27'
L8	S26°W	278'
L9	S89°W	64'
L10	S89°W	80'

