

# **LEGEND:**

**PROPOSED LOCATION**

## **GREAT WESTERN OIL & GAS COMPANY**

**DUTTON HD OFF-SITE TANK BATTERY #22-30D**

**SECTION 22, T4N, R67W, 6th P.M.**

**1180' FNL 101' FWL**



**Utah Engineering & Land Surveying**  
85 South 200 East Vernal, Utah 84078  
(435) 789-1017 \* FAX (435) 789-1813



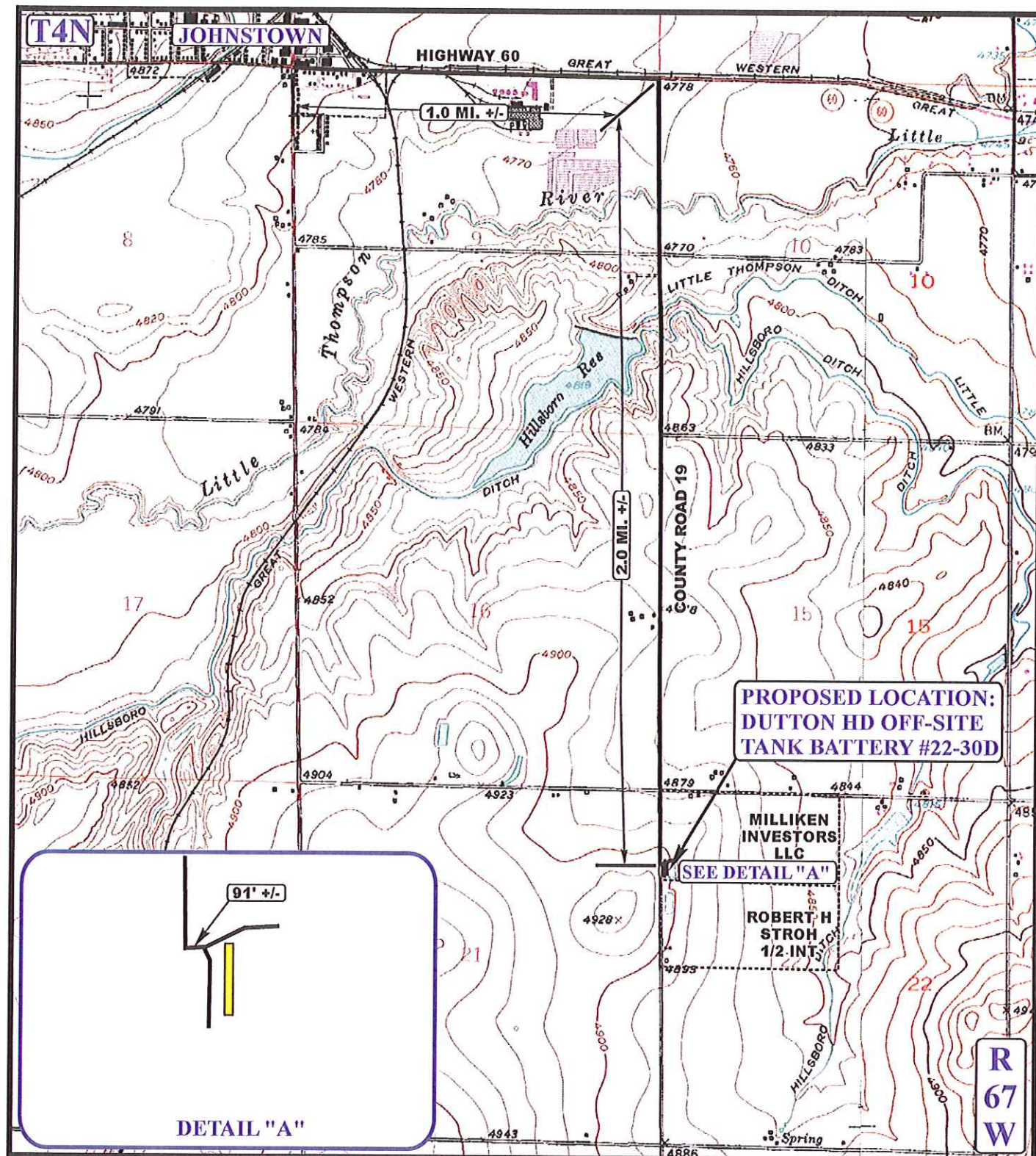
**ACCESS ROAD  
MAP**

**10 03 12**  
MONTH DAY YEAR

**A  
TOPO**

**SCALE: 1:100,000 DRAWN BY: J.L.H. REV:01-02-13 B.D.H.**





# LEGEND:

- EXISTING ROAD
- PROPOSED ACCESS ROAD
- EXISTING FENCE
- 18" CMP REQUIRED



Uintah Engineering & Land Surveying  
 85 South 200 East Vernal, Utah 84078  
 (435) 789-1017 \* FAX (435) 789-1813



GREAT WESTERN OIL & GAS COMPANY  
 DUTTON HD OFF-SITE TANK BATTERY #22-30D  
 SECTION 22, T4N, R67W, 6th P.M.  
 1180' FNL 101' FWL

ACCESS ROAD  
 MAP

10 03 12  
 MONTH DAY YEAR

B  
 TOPO

SCALE: 1" = 2000' DRAWN BY: J.L.H. REV:01-02-13 B.D.H.

GREAT WESTERN OIL & GAS COMPANY  
DUTTON HD OFF-SITE TANK BATTERY #22-30D  
SECTION 22, T4N, R67W, 6<sup>th</sup> P.M.

PROCEED IN AN EASTERLY DIRECTION FROM JOHNSTOWN, COLORADO ALONG HIGHWAY 60 APPROXIMATELY 1.0 MILES TO THE JUNCTION OF THIS ROAD AND COUNTY ROAD 19 TO THE SOUTH; TURN RIGHT AND PROCEED IN A SOUTHERLY DIRECTION APPROXIMATELY 2.0 MILES TO THE JUNCTION OF THIS ROAD AND AN EXISTING ROAD TO THE EAST; TURN LEFT AND PROCEED IN AN EASTERLY DIRECTION APPROXIMATELY 91' TO THE PROPOSED LOCATION.

TOTAL DISTANCE FROM JOHNSTOWN, COLORADO TO THE PROPOSED LOCATION IS APPROXIMATELY 3.0 MILES.