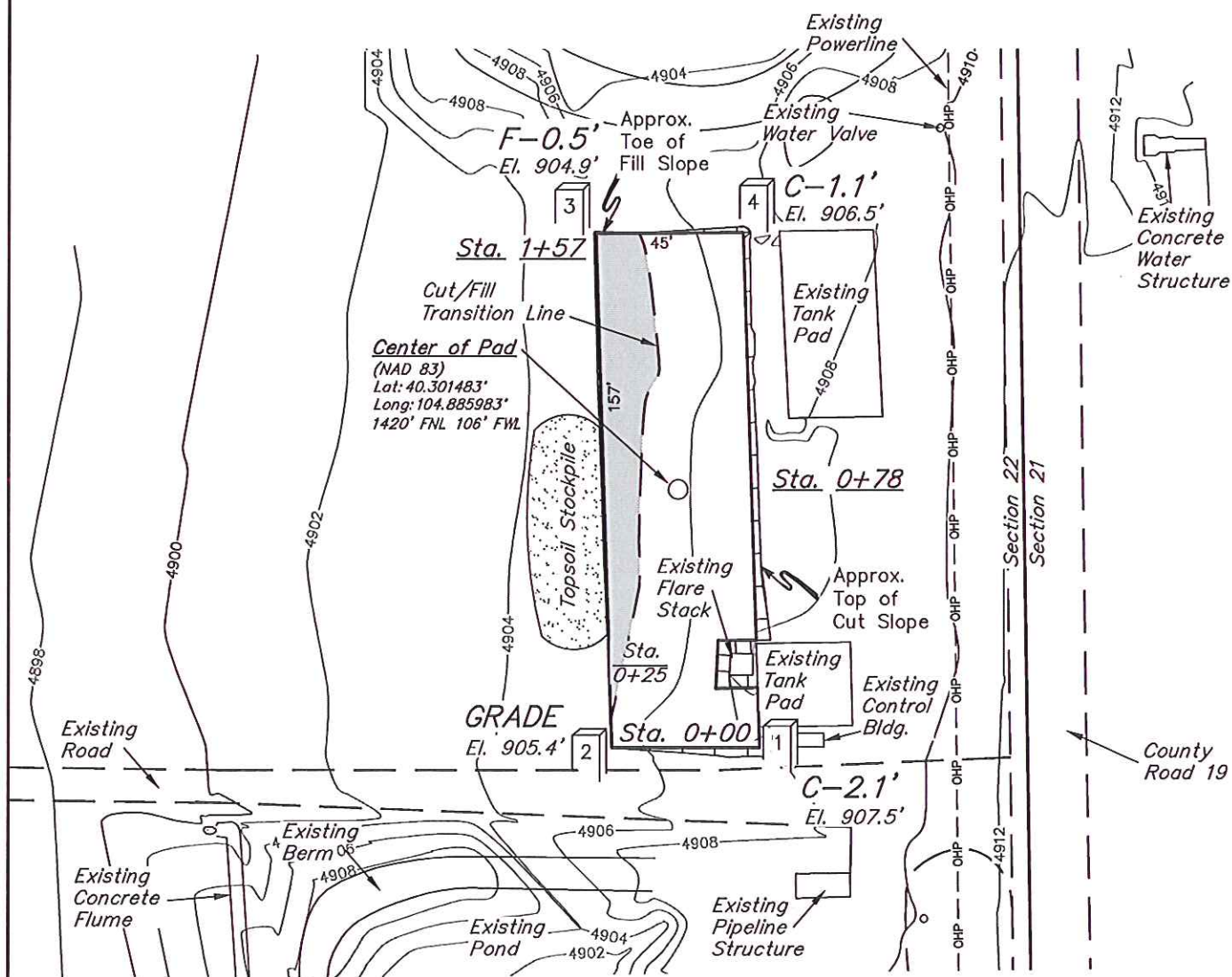


GREAT WESTERN OIL & GAS COMPANY
CONSTRUCTION LAYOUT FOR
STROH CNW-22 OFF-SITE TANK BATTERY #22-32D
SECTION 22, T4N, R67W, 6th. P.M.
SW 1/4 NW 1/4

FIGURE #1

SCALE: 1" = 50'
DATE: 10-01-12
DRAWN BY: H.K.W.
REVISED: 01-03-13 T.B.



Elev. Ungraded Ground At Center of Tank Pad = 4905.8'
FINISHED GRADE ELEV. AT CENTER OF TANK PAD = 4905.4'

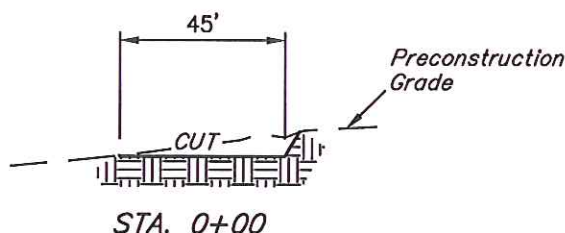
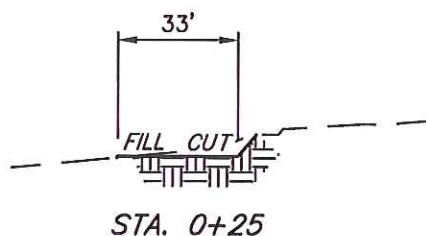
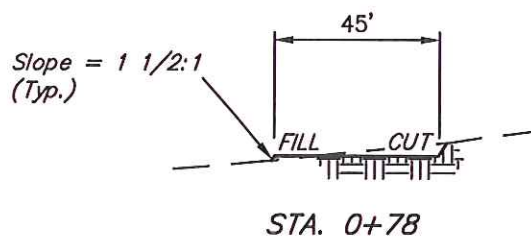
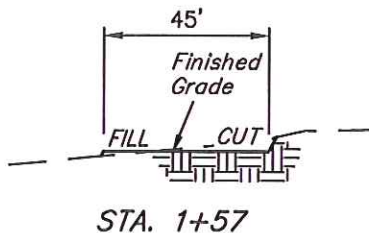
UINTAH ENGINEERING & LAND SURVEYING
85 So. 200 East * Vernal, Utah 84078 * (435) 789-1017

1" = 20'
X-Section
Scale
1" = 50'

DATE: 10-01-12
DRAWN BY: H.K.W.
REVISED: 01-03-13 T.B.

GREAT WESTERN OIL & GAS COMPANY
CONSTRUCTION LAYOUT CROSS SECTIONS FOR
STROH CNW-22 OFF-SITE TANK BATTERY #22-32D
SECTION 22, T4N, R67W, 6th. P.M.
SW 1/4 NW 1/4

FIGURE #2



NOTE:

Topsoil should not be Stripped Below Finished Grade on Substructure Area.

APPROXIMATE ACREAGES
OFFSITE TANK PAD DISTURBANCE = ± 0.171 ACRES

* NOTE:
FILL QUANTITY INCLUDES
5% FOR COMPACTION

APPROXIMATE YARDAGES

(6") Topsoil Stripping = 140 Cu. Yds.
Remaining Location = 70 Cu. Yds.
TOTAL CUT = 210 CU. YDS.
FILL = 70 CU. YDS.

EXCESS MATERIAL = 140 Cu. Yds.
Topsoil = 140 Cu. Yds.

EXCESS UNBALANCE = 0 Cu. Yds.
(After Interim Rehabilitation)

UINTAH ENGINEERING & LAND SURVEYING
85 So. 200 East * Vernal, Utah 84078 * (435) 789-1017

GREAT WESTERN OIL & GAS COMPANY

ADDENDUM TO LEGAL PLAT FOR

STROH CNW-22 OFF-SITE TANK BATTERY #22-32D

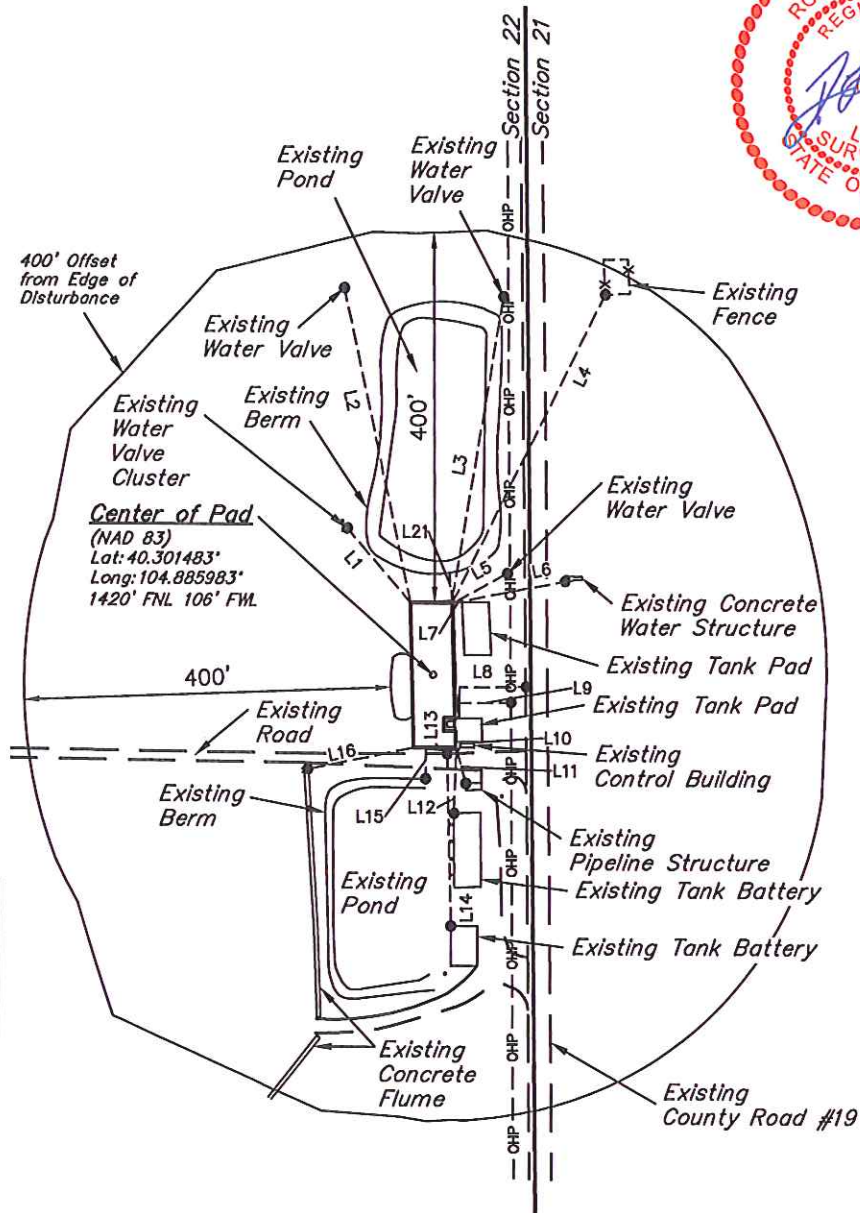
SECTION 22, T4N, R67W, 6th. P.M.

SW 1/4 NW 1/4

SCALE: 1" = 200'

DATE: 01-02-13

DRAWN BY: T.B.



LINE TABLE

LINE	DIRECTION	LENGTH
L1	S41°E	106'
L2	S12°E	349'
L3	S09°W	335'
L4	S26°W	372'
L5	S61°W	67'
L6	S79°W	123'
L7	S88°W	9'
L8	S89°W	73'
L9	S89°W	57'
L10	N70°W	1'
L11	N15°W	37'
L12	N02°E	68'
L13	N01°W	4'
L14	N02°W	190'
L15	NORTH	33'
L16	N78°E	118'

UINTAH ENGINEERING & LAND SURVEYING

85 So. 200 East * Vernal, Utah 84078 * (435) 789-1017