

LEGEND:

● PROPOSED LOCATION

GREAT WESTERN OIL & GAS COMPANY

STROH CNW-22 OFF-SITE TANK BATTERY #22-32D
SECTION 22, T4N, R67W, 6th P.M.
1420' FNL 106' FWL



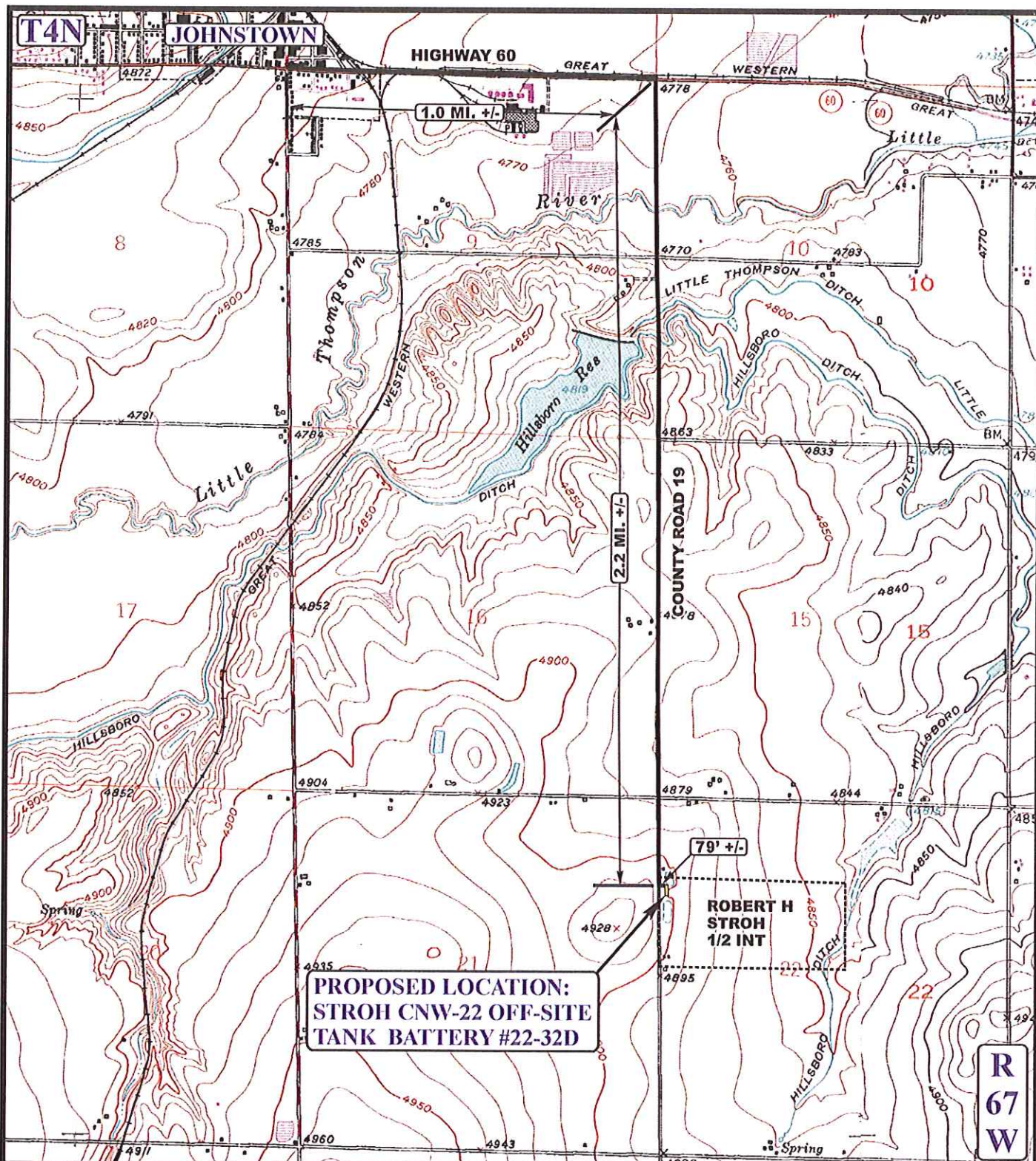
Utah Engineering & Land Surveying
85 South 200 East Vernal, Utah 84078
(435) 789-1017 * FAX (435) 789-1813

ACCESS ROAD
MAP

10 02 12
MONTH DAY YEAR



SCALE: 1:100,000 | DRAWN BY: J.L.H. | REV: 01-02-13 B.D.H.



LEGEND:

— EXISTING ROAD

GREAT WESTERN OIL & GAS COMPANY

STROH CNW-22 OFF-SITE TANK BATTERY #22-32D
SECTION 22, T4N, R67W, 6th P.M.
1420' FNL 106' FWL



Uintah Engineering & Land Surveying
 85 South 200 East Vernal, Utah 84078
 (435) 789-1017 * FAX (435) 789-1813

**ACCESS ROAD
MAP**

10 02 12
 MONTH DAY YEAR

**B
TOPO**

SCALE: 1" = 2000' DRAWN BY: J.L.H. REV: 01-02-13 B.D.H.

GREAT WESTERN OIL & GAS COMPANY
STROH CNW-22 OFF-SITE TANK BATTERY #22-32D
SECTION 22, T4N, R67W, 6th P.M.

PROCEED IN AN EASTERLY DIRECTION FROM JOHNSTOWN, COLORADO ALONG HIGHWAY 60 APPROXIMATELY 1.0 MILES TO THE JUNCTION OF THIS ROAD AND COUNTY ROAD 19 TO THE SOUTH; TURN RIGHT AND PROCEED IN A SOUTHERLY DIRECTION APPROXIMATELY 2.2 MILES TO THE JUNCTION OF THIS ROAD AND AN EXISTING ROAD TO THE EAST; TURN LEFT AND PROCEED IN AN EASTERLY DIRECTION APPROXIMATELY 79' TO THE PROPOSED LOCATION.

TOTAL DISTANCE FROM JOHNSTOWN, COLORADO TO THE PROPOSED LOCATION IS APPROXIMATELY 3.2 MILES.