

# KGH OPERATING COMPANY MEAGHER #14-1H

LOCATED IN RIO BLANCO COUNTY, COLORADO  
SECTION 14, T1S, R104W, 6TH P.M.



PHOTO: VIEW FROM BEGINNING OF PROPOSED ACCESS

CAMERA ANGLE: EASTERLY



120 W. 84TH AVENUE  
THORNTON, COLORADO 80260  
PH. 303-702-1617  
FAX. 303-702-1488  
WWW.POWERSURVEYING.COM

## LOCATION PHOTOS

SURVEYED BY: C. VAN MATRE  
DRAWN BY: D. YOSHIDA  
APPROVED BY: R. GABRIEL

REVISED:

MONTH
OCTOBER
DAY
18
YEAR
2012

P1

# KGH OPERATING COMPANY MEAGHER #14-1H

LOCATED IN RIO BLANCO COUNTY, COLORADO  
SECTION 14, T1S, R104W, 6TH P.M.



PHOTO: VIEW OF LOCATION STAKE

CAMERA ANGLE: NORTHERLY



PHOTO: VIEW OF LOCATION STAKE

CAMERA ANGLE: SOUTHERLY



120 W. 84TH AVENUE  
THORNTON, COLORADO 80260  
PH. 303-702-1617  
FAX. 303-702-1488  
WWW.POWERSURVEYING.COM

## LOCATION PHOTOS

SURVEYED BY: C. VAN MATRE  
DRAWN BY: D. YOSHIDA  
APPROVED BY: R. GABRIEL

REVISED:

MONTH
OCTOBER
DAY
18
YEAR
2012

P2



# KGH OPERATING COMPANY MEAGHER #14-1H

LOCATED IN RIO BLANCO COUNTY, COLORADO  
SECTION 14, T1S, R104W, 6TH P.M.



PHOTO: VIEW OF LOCATION STAKE

CAMERA ANGLE: EASTERLY

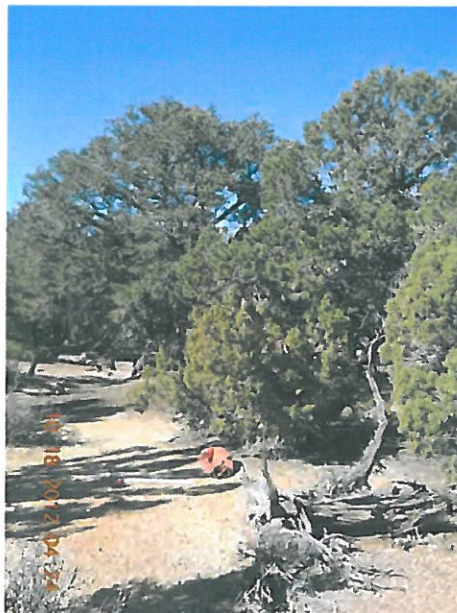


PHOTO: VIEW OF LOCATION STAKE

CAMERA ANGLE: WESTERLY



120 W. 84TH AVENUE  
THORNTON, COLORADO 80260  
PH. 303-702-1617  
FAX. 303-702-1488  
WWW.POWERSURVEYING.COM

## LOCATION PHOTOS

SURVEYED BY: C. VAN MATRE  
DRAWN BY: D. YOSHIDA  
APPROVED BY: R. GABRIEL

REVISED:

MONTH  
OCTOBER  
DAY  
18  
YEAR  
2012

P3