

HALLIBURTON

WPX ENERGY ROCKY MOUNTAIN LLC-EBUS

**Federal RGU 314-25-198
SULPHUR CREEK
Rio Blanco County , Colorado**

Cement Multiple Stages
30-Jul-2012

Post Job Report

The Road to Excellence Starts with Safety

Sold To #: 300721	Ship To #: 2942376	Quote #:	Sales Order #: 9702943
Customer: WPX ENERGY ROCKY MOUNTAIN LLC-EBUS	Customer Rep: Brunk, Andrew		
Well Name: Federal RGU	Well #: 314-25-198	API/UWI #: 05-103-11871	
Field: SULPHUR CREEK	City (SAP): MEEKER	County/Parish: Rio Blanco	State: Colorado
Lat: N 39.928 deg. OR N 39 deg. 55 min. 41.153 secs.	Long: W 108.346 deg. OR W -109 deg. 39 min. 13.36 secs.		
Contractor: CYCLONE 29	Rig/Platform Name/Num: CYCLONE 29		
Job Purpose: Cement Multiple Stages			
Well Type: Development Well	Job Type: Cement Multiple Stages		
Sales Person: MAYO, MARK	Srv Supervisor: SLAUGHTER, JESSE	MBU ID Emp #: 454315	

Job Personnel

HES Emp Name	Exp Hrs	Emp #	HES Emp Name	Exp Hrs	Emp #	HES Emp Name	Exp Hrs	Emp #
BLUST, CHARLES Thomas	2	386662	BURKE, BRENDAN Patrick	11	487782	GOWEN, WESLEY M	11	496205
LAULAINEN, ROGER Edward	11	524413	SILVERTHORN, AARON Jacob	11	491305	SLAUGHTER, JESSE Dean	11	454315
WALPOLE, DARREN Livingston	2	485294						

Equipment

HES Unit #	Distance-1 way	HES Unit #	Distance-1 way	HES Unit #	Distance-1 way	HES Unit #	Distance-1 way
10616651C	30 mile	10784064	30 mile	10867425	30 mile	10897891	30 mile
10938665	30 mile	10938677	30 mile	11006314	30 mile	11259881	30 mile
11808827	30 mile	11808837	30 mile	11808843	30 mile	4902	30 mile
4905	30 mile						

Job Hours

Date	On Location Hours	Operating Hours	Date	On Location Hours	Operating Hours	Date	On Location Hours	Operating Hours
07-29-2012	4	0	07-30-2012	7	7			

TOTAL Total is the sum of each column separately

Job

Formation Name	Top	Bottom	Called Out	Date	Time	Time Zone
Formation Depth (MD)			On Location	29 - Jul - 2012	14:00	MST
Form Type	BHST	115 degF	Job Started	29 - Jul - 2012	20:00	MST
Job depth MD	3956. ft	Job Depth TVD	Job Completed	30 - Jul - 2012	02:17	MST
Water Depth		Wk Ht Above Floor	Departed Loc	30 - Jul - 2012	05:30	GMT
Perforation Depth (MD)	From	To			07:00	MST

Well Data

Description	New / Used	Max pressure psig	Size in	ID in	Weight lbm/ft	Thread	Grade	Top MD ft	Bottom MD ft	Top TVD ft	Bottom TVD ft
-------------	------------	-------------------	---------	-------	---------------	--------	-------	-----------	--------------	------------	---------------

Tools and Accessories

Type	Size	Qty	Make	Depth	Type	Size	Qty	Make	Depth	Type	Size	Qty	Make
Guide Shoe					Packer					Top Plug			
Float Shoe					Bridge Plug					Bottom Plug			
Float Collar					Retainer					SSR plug set	9.625	1	HES
Insert Float										Plug Container	9.625	1	HES
Stage Tool	9.625	1		1780						Centralizers			

Miscellaneous Materials

Gelling Agt	Conc	Surfactant	Conc	Acid Type	Qty	Conc	%
Treatment Fld	Conc	Inhibitor	Conc	Sand Type	Size	Qty	

Fluid Data

Stage/Plug #: 1	Fluid #	Stage Type	Fluid Name	Qty	Qty uom	Mixing Density lbm/gal	Yield ft ³ /sk	Mix Fluid Gal/sk	Rate bbl/min	Total Mix Fluid Gal/sk
-----------------	---------	------------	------------	-----	---------	------------------------	---------------------------	------------------	--------------	------------------------

1	Fresh Water Spacer	FRESH WATER	20.00	bbl	8.33	.0	.0	4	
2	1st Stage Lead Cement	ECONOCEM (TM) SYSTEM (452992)	565.0	sacks	12.8	1.77	9.34	8	9.34
	0.25 lbm	POLY-E-FLAKE (101216940)							
	0.2 %	HR-5, 50 LB SK (100005050)							
	0.25 lbm/bbl	TUF FIBER 594, 15 LB BOX (101350514)							
	9.34 Gal	FRESH WATER							
3	1st Stage Tail Cement	VARICEM (TM) CEMENT (452009)	160.0	sacks	12.8	1.96	10.95	8	10.95
	0.25 lbm	POLY-E-FLAKE (101216940)							
	0.25 lbm/bbl	TUF FIBER 594, 15 LB BOX (101350514)							
	10.95 Gal	FRESH WATER							
4	Displacement	FRESH WATER	304	bbl	8.33	.0	.0	10	
5	Fresh Water Spacer	FRESH WATER	10	bbl	8.33	.0	.0	4	
6	2nd Stage TAIL	VARICEM (TM) CEMENT (452009)	800.0	sacks	12.8	1.96	10.95	8	10.95
	0.25 lbm	POLY-E-FLAKE (101216940)							
	0.125 lbm/bbl	TUF FIBER 594, 15 LB BOX (101350514)							
	10.95 Gal	FRESH WATER							
7	Displacement	FRESH WATER	142.5	bbl	8.33	.0	.0	12	
Calculated Values		Pressures		Volumes					
Displacement	304	Shut In: Instant		Lost Returns	NO	Cement Slurry	513	Pad	
Top Of Cement	SURFACE	5 Min		Cement Returns	60	Actual Displacement	304	Treatment	
Frac Gradient		15 Min		Spacers	30	Load and Breakdown		Total Job	1000
Rates									
Circulating		Mixing	8	Displacement	10	Avg. Job	9		
Cement Left In Pipe	Amount	0 ft	Reason	Shoe Joint					
Frac Ring # 1 @	ID		Frac ring # 2 @	ID		Frac Ring # 3 @	ID	Frac Ring # 4 @	ID
The Information Stated Herein Is Correct				Customer Representative Signature					

The Road to Excellence Starts with Safety

Sold To #: 300721	Ship To #: 2942376	Quote #:	Sales Order #: 9702943
Customer: WPX ENERGY ROCKY MOUNTAIN LLC-EBUS	Customer Rep: Brunk, Andrew		
Well Name: Federal RGU	Well #: 314-25-198	API/UWI #: 05-103-11871	
Field: SULPHUR CREEK	City (SAP): MEEKER	County/Parish: Rio Blanco	State: Colorado
Legal Description:			
Lat: N 39.928 deg. OR N 39 deg. 55 min. 41.153 secs.		Long: W 108.346 deg. OR W -109 deg. 39 min. 13.36 secs.	
Contractor: CYCLONE 29	Rig/Platform Name/Num: CYCLONE 29		
Job Purpose: Cement Multiple Stages	Ticket Amount:		
Well Type: Development Well	Job Type: Cement Multiple Stages		
Sales Person: MAYO, MARK	Srv Supervisor: SLAUGHTER, JESSE	MBU ID Emp #: 454315	

Activity Description	Date/Time	Cht #	Rate bbl/ min	Volume bbl		Pressure psig		Comments
				Stage	Total	Tubing	Casing	
Call Out	07/29/2012 14:00							TD 3961 FT, TP 3956 FT, SHOE 22.8 FT, TOOL 1844 FT, CSG 9 5/8 IN 36 LB/FT, OPEN 14 3/4 IN TO 1780 FT 13 1/2 IN FROM 1780 FT TO TD, MUD WT 9.2 PPG
Pre-Convoy Safety Meeting	07/29/2012 16:50							WITH ALL HES PERSONNEL
Crew Leave Yard	07/29/2012 17:00							
Arrive At Loc	07/29/2012 20:00							RIG WAS PULLING DRILL PIPE UPON HES ARRIVAL. LEFT EQUIPMENT OFF LOCATION UNTIL REQUESTED
Assessment Of Location Safety Meeting	07/29/2012 23:30							WITH ALL HES PERSONNEL
Other	07/29/2012 23:40							SPOT EQUIPMENT
Pre-Rig Up Safety Meeting	07/29/2012 23:50							WITH ALL HES PERSONNEL
Rig-Up Equipment	07/30/2012 00:00							MSC TOOL AND PLUG SET PROVIDED BY WEATHERFORD. NO WEATHERFORD ON LOCATION, HES RAN PLUG SET
Pre-Job Safety Meeting	07/30/2012 02:00							WITH ALL PERSONNEL ON LOCATION
Start Job	07/30/2012 02:17							
Other	07/30/2012 02:17		2	2			170.0	PRIME LINES WITH FRESH WATER

Sold To #: 300721

Ship To #: 2942376

Quote #:

Sales Order #:

9702943

SUMMIT Version: 7.3.0039

Tuesday, August 07, 2012 01:03:00

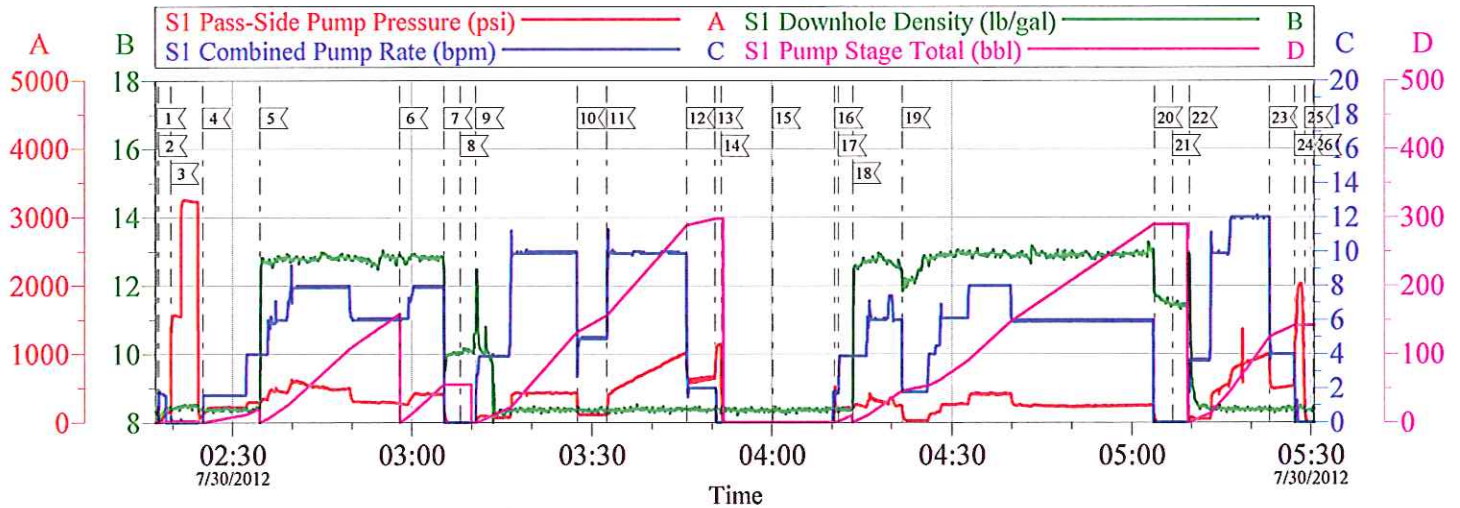
Cementing Job Log

Activity Description	Date/Time	Cht #	Rate bbl/min	Volume bbl		Pressure psig		Comments
				Stage	Total	Tubing	Casing	
Test Lines	07/30/2012 02:19							TESTED LINES AT 3220 PSI PRESSURE HOLDING
Pump Spacer	07/30/2012 02:25		4	20			295.0	FRESH WATER
Pump Lead Cement	07/30/2012 02:34		8	178.1			160.0	565 SKS AT 12.8 PPG, 1.77 FT3/SK, 9.34 GAL/SK. HES PUT 45 LB TUFF FIBER IN FIRST 100 BBL OF LEAD CEMENT AS PER COMPANY REP
Pump Tail Cement	07/30/2012 02:58		8	55.9			420.0	160 SKS AT 12.8 PPG, 1.96 FT3/SK, 10.95 GAL/SK
Shutdown	07/30/2012 03:05							
Drop Plug	07/30/2012 03:08							DROP WIPER DART. PLUG LAUNCHED
Pump Displacement	07/30/2012 03:10		10	132.5			440.0	FRESH WATER
Slow Rate	07/30/2012 03:27		5	20			112.0	SLOWED RATE FOR PLUG TO PASS THROUGH MSC TOOL
Resume	07/30/2012 03:32		10	294			1010.0	RESUME RATE
Slow Rate	07/30/2012 03:45		2	10			650.0	SLOWED RATE 10 BBL PRIOR TO CALCULATED DISPLACEMENT
Bump Plug	07/30/2012 03:50		2		304		1145.0	PLUG BUMPED
Check Floats	07/30/2012 03:51							FLOATS HOLDING. HES RETURNED 1.5 BBL H2O TO PUMP
Drop Opening Device For Multiple Stage Cementer	07/30/2012 04:00							DROPPED BOMB WAITED 10 MINUTES
Open Multiple Stage Cementer	07/30/2012 04:10							MSC TOOL PRESSURED UP TO 700 PSI MSC TOOL OPENED
Pump Spacer	07/30/2012 04:11		4	10			214.0	FRESH WATER
Activity Description	Date/Time	Cht #	Rate bbl/min	Volume bbl		Pressure psig		Comments
				Stage	Total	Tubing	Casing	

Pump Tail Cement	07/30/2012 04:13		8	279.3			330.0	800 SKS AT 12.8 PPG, 1.96 FT3/SK, 10.95 GAL/SK. HES PUT 30 LB TUFF FIBER IN LAST 100 BBL OF TAIL CEMENT. RATE AND DENSITY CHANGES DUE TO POOR CEMENT DELIVERY. HES RETURNED 50 BBL 1ST STAGE CEMENT BACK AT 100 BBL GONE.
Shutdown	07/30/2012 05:03							
Drop Plug	07/30/2012 05:06							DROPPED MSC CLOSING DEVICE
Pump Displacement	07/30/2012 05:09		12	132.5			1000.0	FRESH WATER
Slow Rate	07/30/2012 05:23		2	10			515.0	SLOWED RATE 10 BBL PRIOR TO CALCULATED DISPLACEMENT
Bump Plug	07/30/2012 05:27		2		142.5		1750.0	PLUG BUMPED
Close Multiple Stage Cementer	07/30/2012 05:27							MSC TOOL CLOSED 1200 PSI OVER FINAL LIFT PRESSURE
Release Casing Pressure	07/30/2012 05:29							RELEASE CASING PRESSURE. HES RETURNED 1.5 BBL H2O TO PUMP
End Job	07/30/2012 05:30							PIPE WAS STATIC DURING JOB, GOOD CIRCULATION THOROUGHOUT JOB. HES RETURNED 60 BBL CEMENT TO SURFACE
Pre-Rig Down Safety Meeting	07/30/2012 05:35							WITH ALL HES PERSONNEL
Rig-Down Equipment	07/30/2012 05:40							
Pre-Convoy Safety Meeting	07/30/2012 06:50							WITH ALL HES PERSONNEL
Crew Leave Location	07/30/2012 07:00							
Comment	07/30/2012 07:01							THANK YOU FOR USING HALLIBURTON CEMENT DEPARTMENT JESSE SLAUGHTER AND CREW

WPX RGU 314-25-198

9 5/8 2-STAGE SURFACE



Local Event Log

1 START JOB	02:17:29	2 PRIME LINES	02:17:43
3 TEST LINES	02:19:40	4 PUMP H2O SPACER	02:25:00
5 PUMP LEAD CEMENT	02:34:35	6 PUMP TAIL CEMENT	02:58:01
7 SHUTDOWN	03:05:27	8 DROP WIPER DART	03:08:08
9 PUMP DISPLACEMENT	03:10:40	10 SLOWED RATE TO PASS THROUGH MSC	03:27:33
11 RESUME RATE	03:32:30	12 SLOW RATE	03:45:45
13 BUMP PLUG	03:50:30	14 CHECK FLOATS	03:51:33
15 DROP MSC OPENING DEVICE	04:00:07	16 OPEN MSC	04:10:32
17 PUMP H2O SPACER	04:11:07	18 PUMP TAIL CEMENT	04:13:33
19 SLOWED RATE DUE TO POOR CEMENT DELIVERY	04:21:47	20 SHUTDOWN	05:03:52
21 DROP CLOSING PLUG	05:06:50	22 PUMP DISPLACEMENT	05:09:40
23 SLOW RATE	05:23:03	24 CLOSE MSC TOOL	05:27:16
25 CHECK MSC TOOL	05:29:01	26 END JOB	05:30:26

Customer: WPX
Well Description: RGU 314-25-198
Customer Rep: ANDREW BRUNK

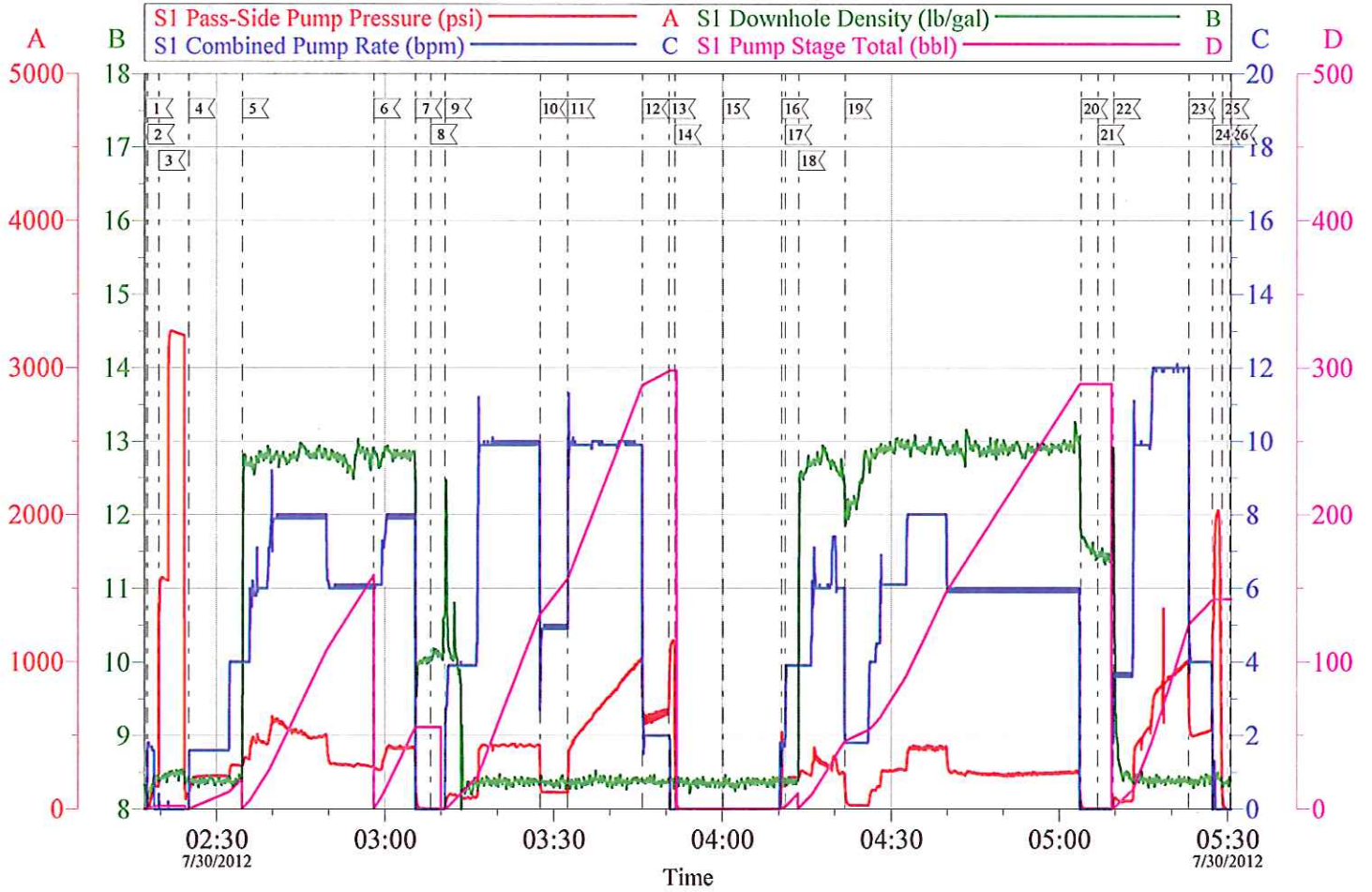
Job Date: 30-Jul-2012
Job Type: SURFACE
Cement Supervisor: JESSE SLAUGHTER

Sales Order #: 9702943
ADC Used: YES
Elite #4: AARON SILVERTHORN

OptiCem v6.4.10
30-Jul-12 05:37

WPX RGU 314-25-198

9 5/8 2-STAGE SURFACE



Customer: WPX	Job Date: 30-Jul-2012	Sales Order #: 9702943
Well Description: RGU 314-25-198	Job Type: SURFACE	ADC Used: YES
Customer Rep: ANDREW BRUNK	Cement Supervisor: JESSE SLAUGHTER	Elite #4: AARON SILVERTHORN

OptiCem v6.4.10
30-Jul-12 05:40