

The Road to Excellence Starts with Safety

Sold To #: 300721	Ship To #: 2934780	Quote #:	Sales Order #: 9610247
Customer: WPX ENERGY ROCKY MOUNTAIN LLC-EBUS		Customer Rep: Wilson, W.C	
Well Name: RWF	Well #: 434-27	API/UWI #: 05-045-19847	
Field: RULISON	City (SAP): RIFLE	County/Parish: Garfield	State: Colorado
Lat: N 39.49 deg. OR N 39 deg. 29 min. 24.644 secs.		Long: W 107.873 deg. OR W -108 deg. 7 min. 38.892 secs.	
Contractor: NABORS 577	Rig/Platform Name/Num: NABORS 577		
Job Purpose: Cement Surface Casing			
Well Type: Development Well		Job Type: Cement Surface Casing	
Sales Person: MAYO, MARK		Srcv Supervisor: DEUSSEN, EDWARD MBU ID Emp #: 485182	

Job Personnel

HES Emp Name	Exp Hrs	Emp #	HES Emp Name	Exp Hrs	Emp #	HES Emp Name	Exp Hrs	Emp #
BRENNECKE, ANDREW Bailey	7.0	486345	DEUSSEN, EDWARD Eric	7.0	485182	MEYERS, GARY Wayne	7.0	524819
SMITH, CHRISTOPHER Scott	7.0	452619	VANALSTYNE, TROY L	7.0	420256			

Equipment

HES Unit #	Distance-1 way	HES Unit #	Distance-1 way	HES Unit #	Distance-1 way	HES Unit #	Distance-1 way
10867423	60 mile	11259884	60 mile	11542767	60 mile	11562538	60 mile
11808835	60 mile						

Job Hours

Date	On Location Hours	Operating Hours	Date	On Location Hours	Operating Hours	Date	On Location Hours	Operating Hours
7/02/2012	3	0	7/03/2012	4	2			

TOTAL Total is the sum of each column separately

Job

Job Times

Formation Name	Top	Bottom	Called Out	Date	Time	Time Zone
Formation Depth (MD)			On Location	02 - Jul - 2012	17:00	MST
Form Type	BHST		Job Started	02 - Jul - 2012	21:00	MST
Job depth MD	1116.5 ft	Job Depth TVD	Job Completed	03 - Jul - 2012	01:55	MST
Water Depth		Wk Ht Above Floor	Job Completed	03 - Jul - 2012	02:53	MST
Perforation Depth (MD)	From	To	Departed Loc	03 - Jul - 2012	04:30	MST

Well Data

Description	New / Used	Max pressure psig	Size in	ID in	Weight lbm/ft	Thread	Grade	Top MD ft	Bottom MD ft	Top TVD ft	Bottom TVD ft
Sales/Rental/3 <sup>rd</sup> Party (HES)											

Description

Description	Qty	Qty uom	Depth	Supplier
PLUG,CMTG, TOP, 9 5/8, HWE, 8.16 MIN/9.06 MA	1	EA		

Tools and Accessories

Type	Size	Qty	Make	Depth	Type	Size	Qty	Make	Depth	Type	Size	Qty	Make
Guide Shoe					Packer					Top Plug	9 5/8	1	HES
Float Shoe					Bridge Plug					Bottom Plug			
Float Collar					Retainer					SSR plug set			
Insert Float										Plug Container	9 5/8	1	HES
Stage Tool										Centralizers			

Miscellaneous Materials

Gelling Agt	Conc	Surfactant	Conc	Acid Type	Qty	Conc	%
Treatment Fld	Conc	Inhibitor	Conc	Sand Type	Size	Qty	

Fluid Data

Stage/Plug #: 1										
Fluid #	Stage Type	Fluid Name	Qty	Qty uom	Mixing Density lbm/gal	Yield ft <sup>3</sup> /sk	Mix Fluid Gal/sk	Rate bbl/min	Total Mix Fluid Gal/sk	

Stage/Plug #: 1									
Fluid #	Stage Type	Fluid Name	Qty	Qty uom	Mixing Density lbm/gal	Yield ft <sup>3</sup> /sk	Mix Fluid Gal/sk	Rate bbl/min	Total Mix Fluid Gal/sk
1	Fresh Water		20.00	bbl	8.33	.0	.0	4.0	
2	Lead Cement	VERSACEM (TM) SYSTEM (452010)	145.0	sacks	12.3	2.38	13.75	8.0	13.75
3	Tail Cement	VERSACEM (TM) SYSTEM (452010)	160.0	sacks	12.8	2.11	11.75	8.0	11.75
4	Displacement Fluid		84.00	bbl	8.34	.0	.0	10.0	
Calculated Values		Pressures		Volumes					
Displacement	84.5	Shut In: Instant		Lost Returns		Cement Slurry	121.6	Pad	
Top Of Cement	SURFACE	5 Min		Cement Returns	21	Actual Displacement		Treatment	
Frac Gradient		15 Min		Spacers	20	Load and Breakdown		Total Job	226
Rates									
Circulating		Mixing	8	Displacement	10	Avg. Job	8		
Cement Left In Pipe	Amount	43.21ft	Reason	Shoe Joint					
Frac Ring # 1 @	ID	Frac ring # 2 @	ID	Frac Ring # 3 @	ID	Frac Ring # 4 @	ID		
The Information Stated Herein Is Correct				Customer Representative Signature					

*The Road to Excellence Starts with Safety*

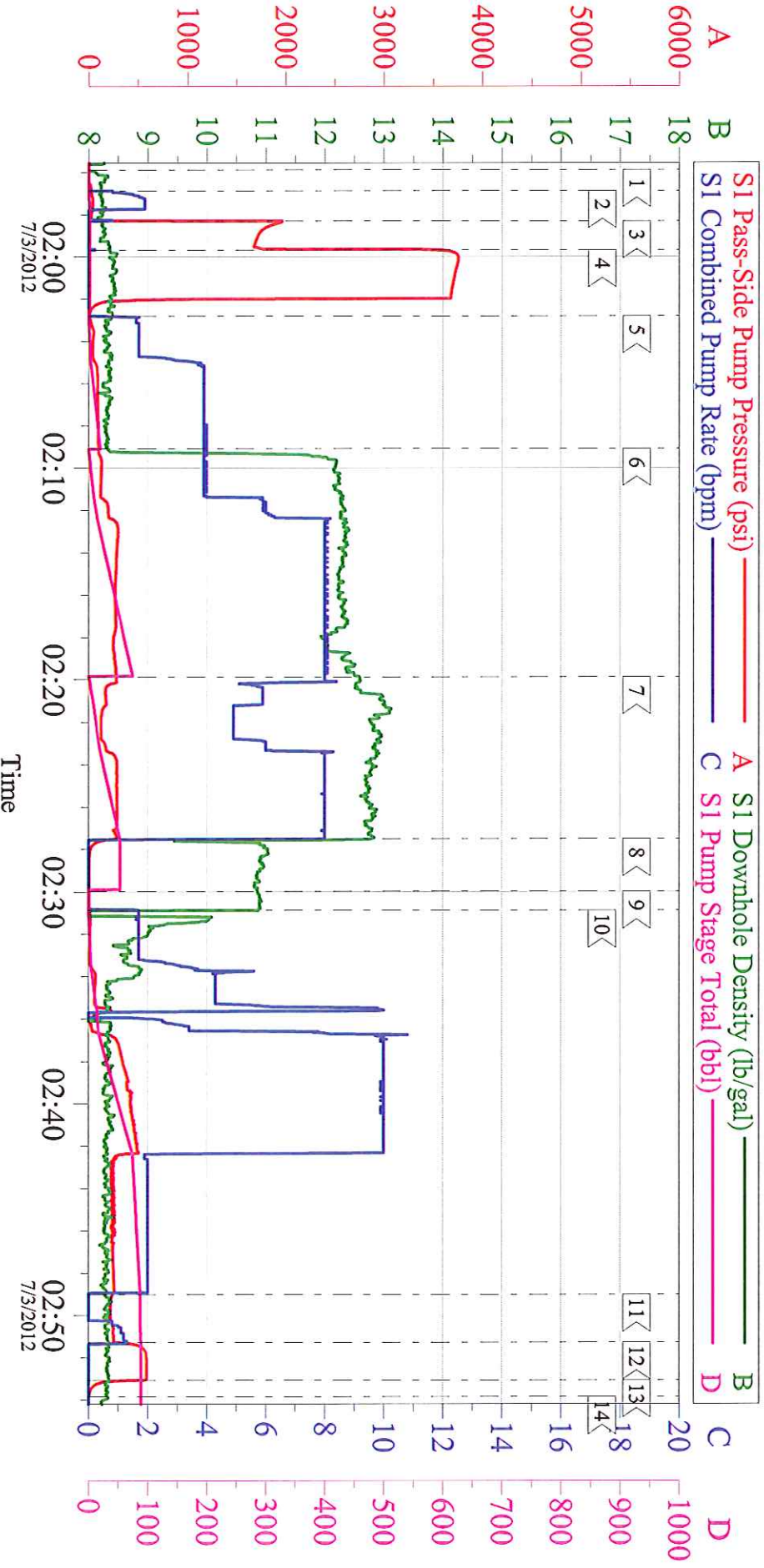
Sold To #: 300721	Ship To #: 2934780	Quote #:	Sales Order #: 9610247
Customer: WPX ENERGY ROCKY MOUNTAIN LLC-EBUS		Customer Rep: Wilson, W.C	
Well Name: RWF	Well #: 434-27	API/UWI #: 05-045-19847	
Field: RULISON	City (SAP): RIFLE	County/Parish: Garfield	State: Colorado
<b>Legal Description:</b>			
Lat: N 39.49 deg. OR N 39 deg. 29 min. 24.644 secs.		Long: W 107.873 deg. OR W -108 deg. 7 min. 38.892 secs.	
Contractor: NABORS 577		Rig/Platform Name/Num: NABORS 577	
Job Purpose: Cement Surface Casing			Ticket Amount:
Well Type: Development Well		Job Type: Cement Surface Casing	
Sales Person: MAYO, MARK		Srvc Supervisor: DEUSSEN, EDWARD	MBU ID Emp #: 485182

Activity Description	Date/Time	Cht #	Rate bbl/min	Volume bbl		Pressure psig		Comments
				Stage	Total	Tubing	Casing	
Call Out	07/02/2012 17:00							
Pre-Convoy Safety Meeting	07/02/2012 19:00							
Crew Leave Yard	07/02/2012 19:15							1 ELITE, 1 660, 1 PICKUP
Arrive At Loc	07/02/2012 21:00							CASING CREW JUST GETTING RIGGED UP
Assessment Of Location Safety Meeting	07/02/2012 21:15							
Pre-Rig Up Safety Meeting	07/02/2012 23:45							
Rig-Up Equipment	07/03/2012 00:00							
Pre-Job Safety Meeting	07/03/2012 01:30							
Pump Water	07/03/2012 01:56		2	2			41.0	FILL LINES
Pressure Test	07/03/2012 01:59							PRESSURE TEST TO 3755 PSI - PRESSURE HELD WELL
Pump Spacer 1	07/03/2012 02:02		4	20			90.0	FRESH WATER SPACER
Pump Lead Cement	07/03/2012 02:09		8	61.5			295.0	145 SKS, 12.3 PPG, 2.38 YIELD, 13.75 GAL/SK
Pump Tail Cement	07/03/2012 02:19		8	60.1			251.0	160 SKS, 12.8 PPG, 2.11 YIELD, 11.75 GAL/SK
Shutdown	07/03/2012 02:27							WASH UP ON TOP OF PLUG
Drop Top Plug	07/03/2012 02:29							

Activity Description	Date/Time	Cht #	Rate bbl/min	Volume bbl		Pressure psig		Comments
				Stage	Total	Tubing	Casing	
Pump Displacement	07/03/2012 02:30		10	84.5			470.0	FRESH WATER- ADDED 100 LBS SODIUM BICARBONATE PER COMPANY MAN
Slow Rate	07/03/2012 02:49		2	10			240.0	GOT 21 BBLs CEMENT BACK TO SURFACE
Bump Plug	07/03/2012 02:51						261.0	
Check Floats	07/03/2012 02:53							GOT 1/4 BBL BACK
End Job	07/03/2012 02:53							
Post-Job Safety Meeting (Pre Rig-Down)	07/03/2012 02:55							
Rig-Down Equipment	07/03/2012 03:00							
Pre-Convoy Safety Meeting	07/03/2012 04:15							
Crew Leave Location	07/03/2012 04:30							
Other	07/03/2012 04:31							THANK YOU FOR USING HALLIBURTON AND ED DEUSSEN AND CREW

# WPX - RWF 434-27

## 9 5/8 SURFACE



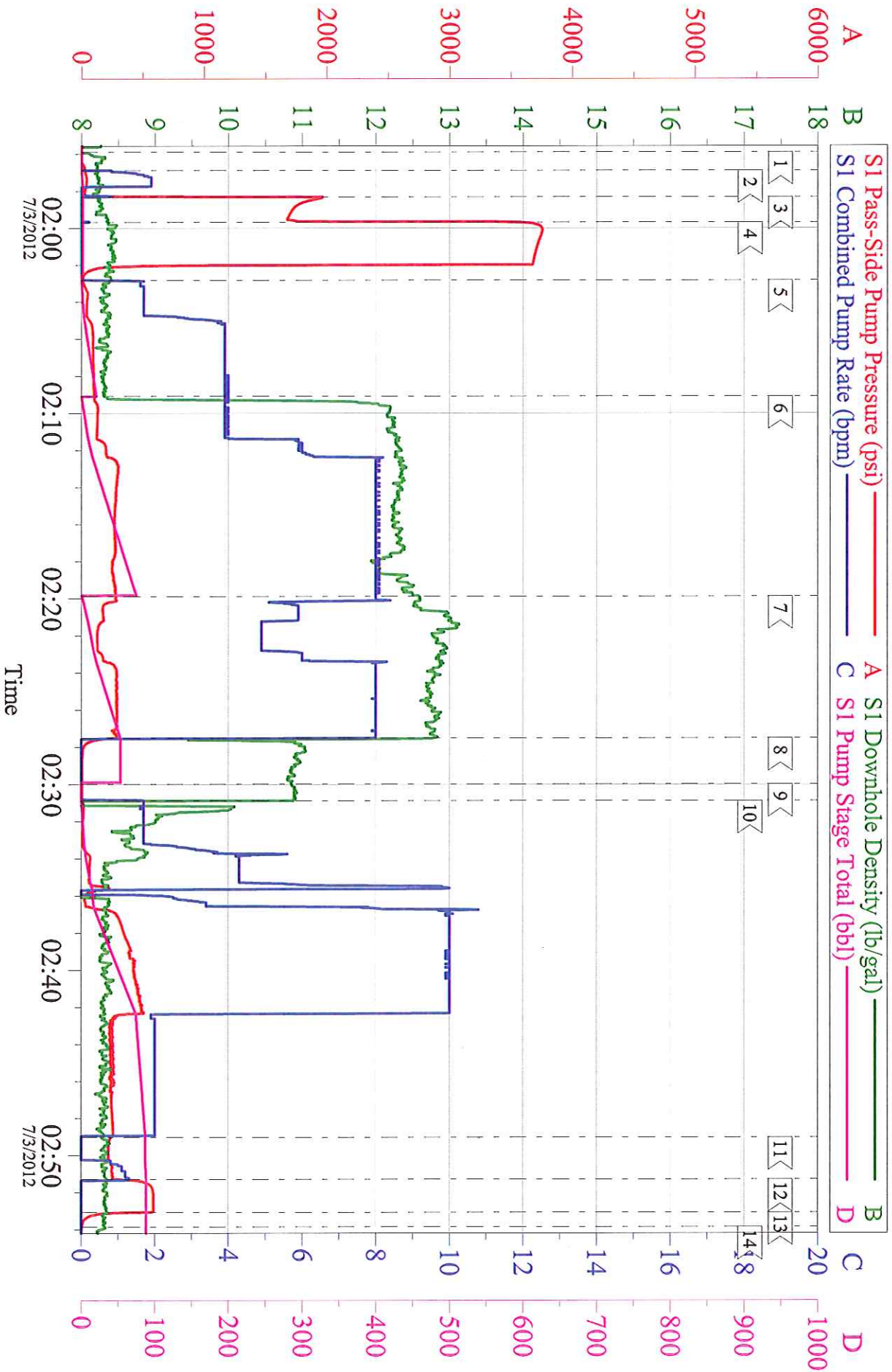
Local Event Log

1	START JOB	01:55:53	2	FILL LINES	01:56:53	3	5TH GEAR STALL/OUT	01:58:19
4	PRESSURE TEST	01:59:41	5	PUMP H2O SPACER	02:02:49	6	PUMP LEAD CEMENT	02:09:05
7	PUMP TAIL CEMENT	02:19:52	8	SHUT/DOWN	02:27:31	9	DROP TOP PLUG	02:29:59
10	PUMP DISPLACEMENT	02:30:53	11	SLOW RATE	02:49:01	12	BUMP PLUG	02:51:16
13	CHECK FLOATS	02:53:04	14	END JOB	02:53:51			

Customer:	WPX	Job Date:	03-Jul-2012	Sales Order #:	9610247
Well Description:	RWF 434-27	Job Type:	SURFACE	ADC Used:	YES
Company Rep:	W.C. WILSON	Cement Supervisor:	ED DEUSSEN	Elite #1:	ANDREW BRENNHECKE

# WPX - RWF 434-27

9 5/8 SURFACE



Customer: WPX	Job Date: 03-Jul-2012	Sales Order #: 9610247
Well Description: RWF 434-27	Job Type: SURFACE	ADC Used: YES
Company Rep: W.C. WILSON	Cement Supervisor: ED DEUSSEN	Elite #1: ANDREW BRENNENCKE