

# T4N, R67W, 6th. P.M.

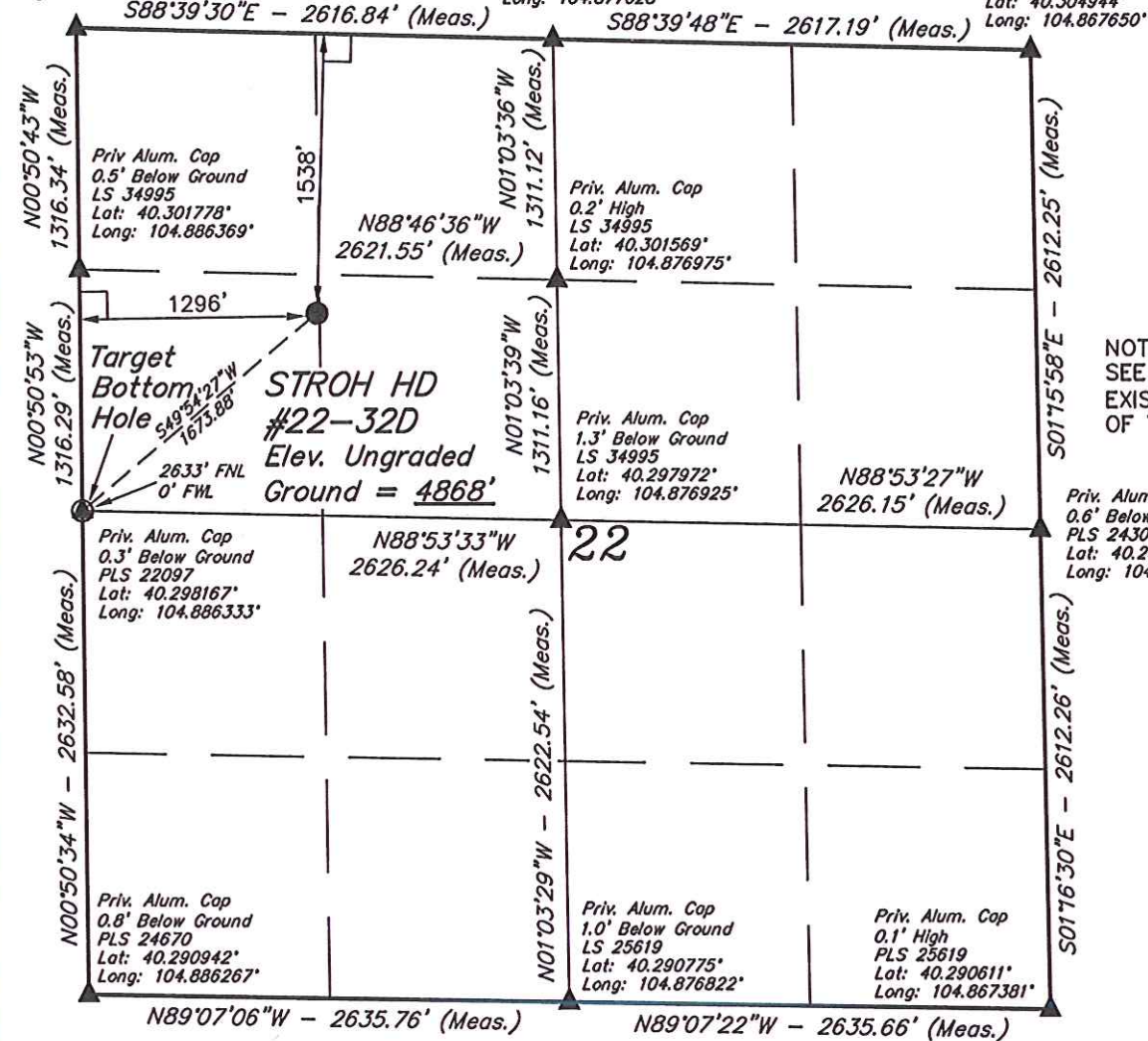
# GREAT WESTERN OIL & GAS COMPANY

Well location, STROH HD #22-32D, located as shown in the SW 1/4 NW 1/4 of Section 22, T4N, R67W, 6th. P.M., Weld County, Colorado.

Priv. Alum. Cap  
0.7' Below Ground  
LS 34995  
Lat: 40.305389°  
Long: 104.886403°

Priv. Alum. Cap  
0.8' Below Ground  
PLS 20676  
Lat: 40.305167°  
Long: 104.877028°

Priv. Alum. Cap  
1.0' Below Ground  
LS 4392  
Lat: 40.304944°  
Long: 104.867650°



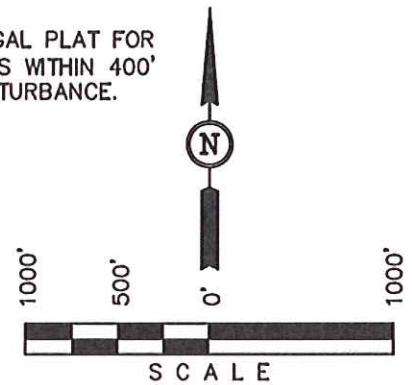
## BASIS OF ELEVATION

USGS COOPERATIVE BASE NETWORK CONTROL STATION, DESIGNATION 'VERMILYEA'. NGS DATA SHEET LISTS THE NAVD 88 ELEVATION AS BEING 5026 FEET.

## BASIS OF BEARINGS

BASIS OF BEARINGS IS A G.P.S. OBSERVATION.

NOTE:  
SEE ADDENDUM TO LEGAL PLAT FOR EXISTING IMPROVEMENTS WITHIN 400' OF THE PROPOSED DISTURBANCE.



## CERTIFICATE

THIS IS TO CERTIFY THAT THE ABOVE PLAT WAS PREPARED FROM FIELD NOTES OF ACTUAL SURVEYS MADE BY ME OR UNDER MY SUPERVISION AND THAT THE SAME ARE TRUE AND CORRECT TO THE BEST OF MY KNOWLEDGE AND BELIEF.

ROBERT L. BOYER  
REGISTERED LAND SURVEYOR  
REGISTRATION NO. 17492  
STATE OF COLORADO  
98-05-12

REV: 10-05-12

**UINTAH ENGINEERING & LAND SURVEYING**  
85 SOUTH 200 EAST - VERNAL, UTAH 84078  
(435) 789-1017

## LEGEND:

- └─┘ = 90° SYMBOL
- = PROPOSED WELL HEAD.
- ▲ = SECTION CORNERS LOCATED.

PDOP = 1.3

NAD 83 (TARGET BOTTOM HOLE)	NAD 83 (SURFACE LOCATION)
LATITUDE = 40°17'53.40" (40.298187)	LATITUDE = 40°18'03.95" (40.301097)
LONGITUDE = 104°53'10.80" (104.886333)	LONGITUDE = 104°52'54.17" (104.881714)
NAD 27 (TARGET BOTTOM HOLE)	NAD 27 (SURFACE LOCATION)
LATITUDE = 40°17'53.46" (40.298183)	LATITUDE = 40°18'04.01" (40.301114)
LONGITUDE = 104°53'08.89" (104.885803)	LONGITUDE = 104°52'52.27" (104.881186)

SCALE 1" = 1000'	DATE SURVEYED: 09-26-12	DATE DRAWN: 09-28-12
PARTY B.L. D.W. H.K.W.	REFERENCES G.L.O. PLAT	
WEATHER WARM	FILE GREAT WESTERN OIL & GAS COMPANY	