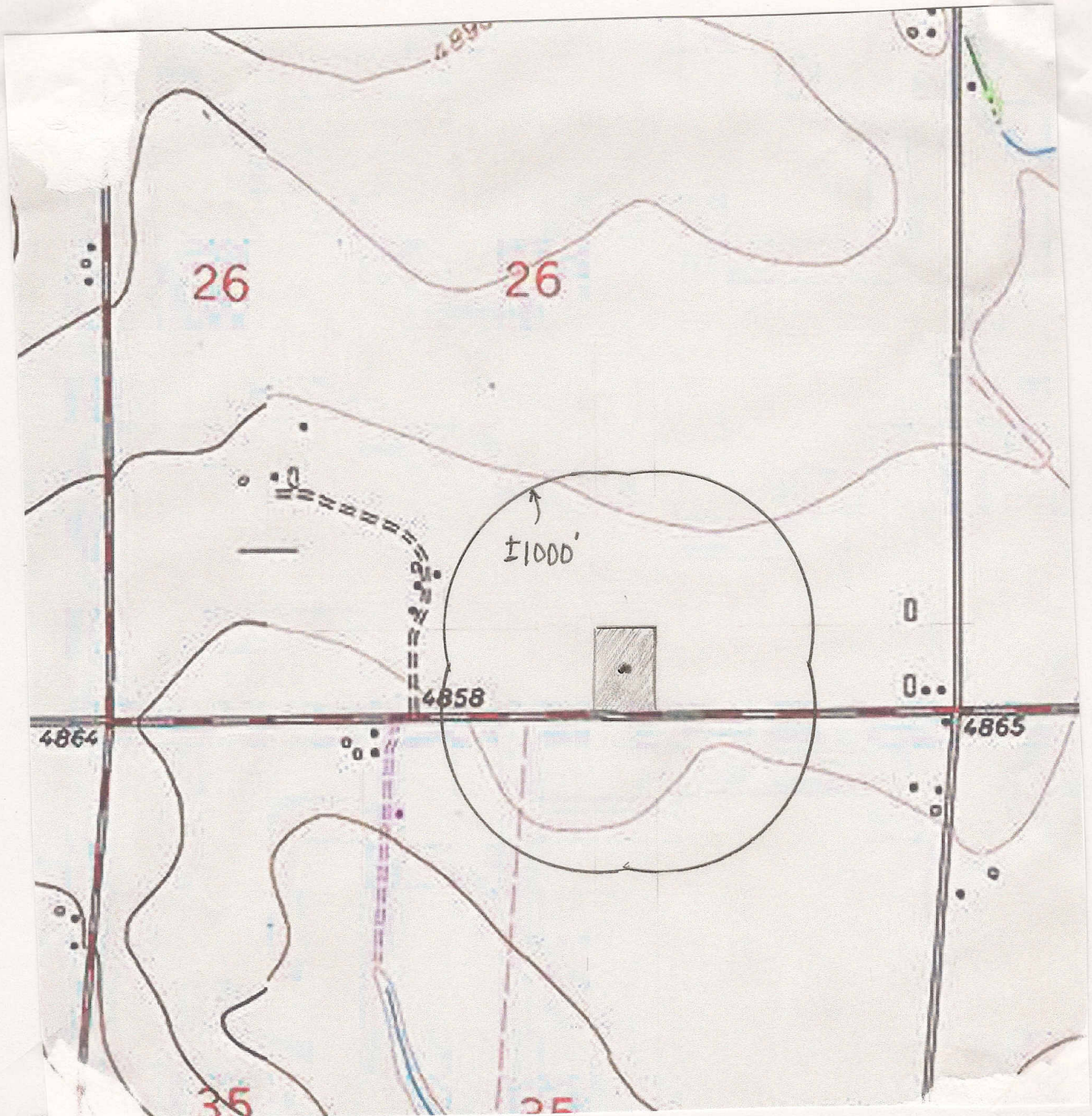


# HYDROLOGY / TOPOGRAPHY MAP

SEC. 26 T7N R66W, 6TH P.M.



APPROX. SCALE  
1" = 1000'

(NOTE: DISTANCES FROM THE 26Q-421 LOCATION)

SEVERAL IRRIGATION DITCHES IN THE AREA (SEE LOCATION DRAWING):  
N-S DITCH 551' E.; CENTER OF E-W DIRT DITCH ALONG ROAD, 190' S.;  
E-W CONCRETE DITCH IS 245' S.; A N-S TO E-W CONCRETE DITCH IS 983' NW.

OTHER THAN IRRIGATION DITCHES THERE ARE NO WATER FEATURES  
WITHIN 1000' OF DISTURBANCE.

PREPARED BY:

HORSESHOE SURVEYING, LLC  
PO BOX 150458  
LAKEWOOD, CO 80215  
(720)872-0196

WELL NAME:

LEFFLER 26Q-HZ Pad

DRAWING DATE:

1-2-13

LOCATION:

WELD COUNTY, CO  
SE1/4, SEC. 26, T7N, R66W, 6TH P.M.

FIELD DATE:

8-27-11 & 10-31-12

BY:

TGC