
WPX ENERGY ROCKY MOUNTAIN LLC-EBUS

**KP 434-9
KOKOPELLI
Garfield County , Colorado**

Cement Surface Casing
21-Oct-2012

Post Job Report

The Road to Excellence Starts with Safety

Sold To #: 300721	Ship To #: 2953872	Quote #:	Sales Order #: 9844392
Customer: WPX ENERGY ROCKY MOUNTAIN LLC-EBUS	Customer Rep: Hutson, Matt		
Well Name: KP	Well #: 434-9	API/UWI #: 05-045-21200	
Field: KOKOPELLI	City (SAP): SILT	County/Parish: Garfield	State: Colorado
Lat: N 39.533 deg. OR N 39 deg. 32 min. 0.139 secs.	Long: W 107.567 deg. OR W -108 deg. 25 min. 59.614 secs.		
Contractor: NABORS 574	Rig/Platform Name/Num: NABORS 574		
Job Purpose: Cement Surface Casing			
Well Type: Development Well	Job Type: Cement Surface Casing		
Sales Person: MAYO, MARK	Srvc Supervisor: KUKUS, CHRISTOPHER	MBU ID Emp #: 413952	

Job Personnel

HES Emp Name	Exp Hrs	Emp #	HES Emp Name	Exp Hrs	Emp #	HES Emp Name	Exp Hrs	Emp #
GOWEN, WESLEY M	0.0	496205	KUKUS, CHRISTOPHER A	0.0	413952	RAMSEY, STANTON Michael	0.0	477609
WALPOLE, DARREN Livingston	0.0	485294						

Equipment

HES Unit #	Distance-1 way	HES Unit #	Distance-1 way	HES Unit #	Distance-1 way	HES Unit #	Distance-1 way
10567589C	60 mile	10867423	60 mile	10867531	60 mile	10989685	60 mile
11583931	60 mile	11808829	60 mile				

Job Hours

Date	On Location Hours	Operating Hours	Date	On Location Hours	Operating Hours	Date	On Location Hours	Operating Hours

TOTAL	Total is the sum of each column separately							
-------	--	--	--	--	--	--	--	--

Job

Formation Name	Top	Bottom	Called Out	Date	Time	Time Zone
Formation Depth (MD)			On Location	20 - Oct - 2012	15:00	MST
Form Type	BHST		Job Started	20 - Oct - 2012	20:00	MST
Job depth MD	1530. ft	Job Depth TVD	Job Started	21 - Oct - 2012	03:34	MST
Water Depth		Wk Ht Above Floor	Job Completed	21 - Oct - 2012	04:43	MST
Perforation Depth (MD)	From	To	Departed Loc	21 - Oct - 2012	06:00	MST

Well Data

Description	New / Used	Max pressure psig	Size in	ID in	Weight lbm/ft	Thread	Grade	Top MD ft	Bottom MD ft	Top TVD ft	Bottom TVD ft
OPEN HOLE				13.5				.	1530.		
SURFACE CASING	New		9.625	9.001	32.3		J-55	.	1510.		

Sales/Rental/3rd Party (HES)

Description	Qty	Qty uom	Depth	Supplier
PLUG,CMTG,TOP,9 5/8,HWE,8.16 MIN/9.06 MA	1	EA		

Tools and Accessories

Type	Size	Qty	Make	Depth	Type	Size	Qty	Make	Depth	Type	Size	Qty	Make
Guide Shoe					Packer					Top Plug			
Float Shoe					Bridge Plug					Bottom Plug			
Float Collar					Retainer					SSR plug set			
Insert Float										Plug Container			
Stage Tool										Centralizers			

Miscellaneous Materials

Gelling Agt	Conc	Surfactant	Conc	Acid Type	Qty	Conc	%
Treatment Fld	Conc	Inhibitor	Conc	Sand Type	Size	Qty	

Fluid Data

Stage/Plug #: 1

Fluid #	Stage Type	Fluid Name	Qty	Qty uom	Mixing Density lbm/gal	Yield ft ³ /sk	Mix Fluid Gal/sk	Rate bbl/min	Total Mix Fluid Gal/sk
1	Fresh Water Spacer		20.00	bbl	8.33	.0	.0	.0	
2	VersaCem Lead Cement	VERSACEM (TM) SYSTEM (452010)	240.0	sacks	12.3	2.38	13.75	8.0	13.75
13.75 Gal		FRESH WATER							
3	VersaCem Tail Cement	VERSACEM (TM) SYSTEM (452010)	160.0	sacks	12.8	2.11	11.75	8.0	11.75
11.75 Gal		FRESH WATER							
4	Fresh Water Displacement		115.00	bbl	8.33	.0	.0	.0	
Calculated Values		Pressures		Volumes					
Displacement		Shut In: Instant		Lost Returns		Cement Slurry		Pad	
Top Of Cement		5 Min		Cement Returns		Actual Displacement		Treatment	
Frac Gradient		15 Min		Spacers		Load and Breakdown		Total Job	
Rates									
Circulating		Mixing		Displacement		Avg. Job			
Cement Left In Pipe		Amount	47 ft	Reason	Shoe Joint				
Frac Ring # 1 @	ID	Frac ring # 2 @	ID	Frac Ring # 3 @	ID	Frac Ring # 4 @	ID		
The Information Stated Herein Is Correct				Customer Representative Signature					

The Road to Excellence Starts with Safety

Sold To #: 300721		Ship To #: 2953872		Quote #:		Sales Order #: 9844392	
Customer: WPX ENERGY ROCKY MOUNTAIN LLC-EBUS				Customer Rep: Hutson, Matt			
Well Name: KP			Well #: 434-9			API/UWI #: 05-045-21200	
Field: KOKOPELLI		City (SAP): SILT		County/Parish: Garfield		State: Colorado	
Legal Description:							
Lat: N 39.533 deg. OR N 39 deg. 32 min. 0.139 secs.				Long: W 107.567 deg. OR W -108 deg. 25 min. 59.614 secs.			
Contractor: NABORS 574			Rig/Platform Name/Num: NABORS 574				
Job Purpose: Cement Surface Casing						Ticket Amount:	
Well Type: Development Well			Job Type: Cement Surface Casing				
Sales Person: MAYO, MARK			Srv Supervisor: KUKUS, CHRISTOPHER			MBU ID Emp #: 413952	

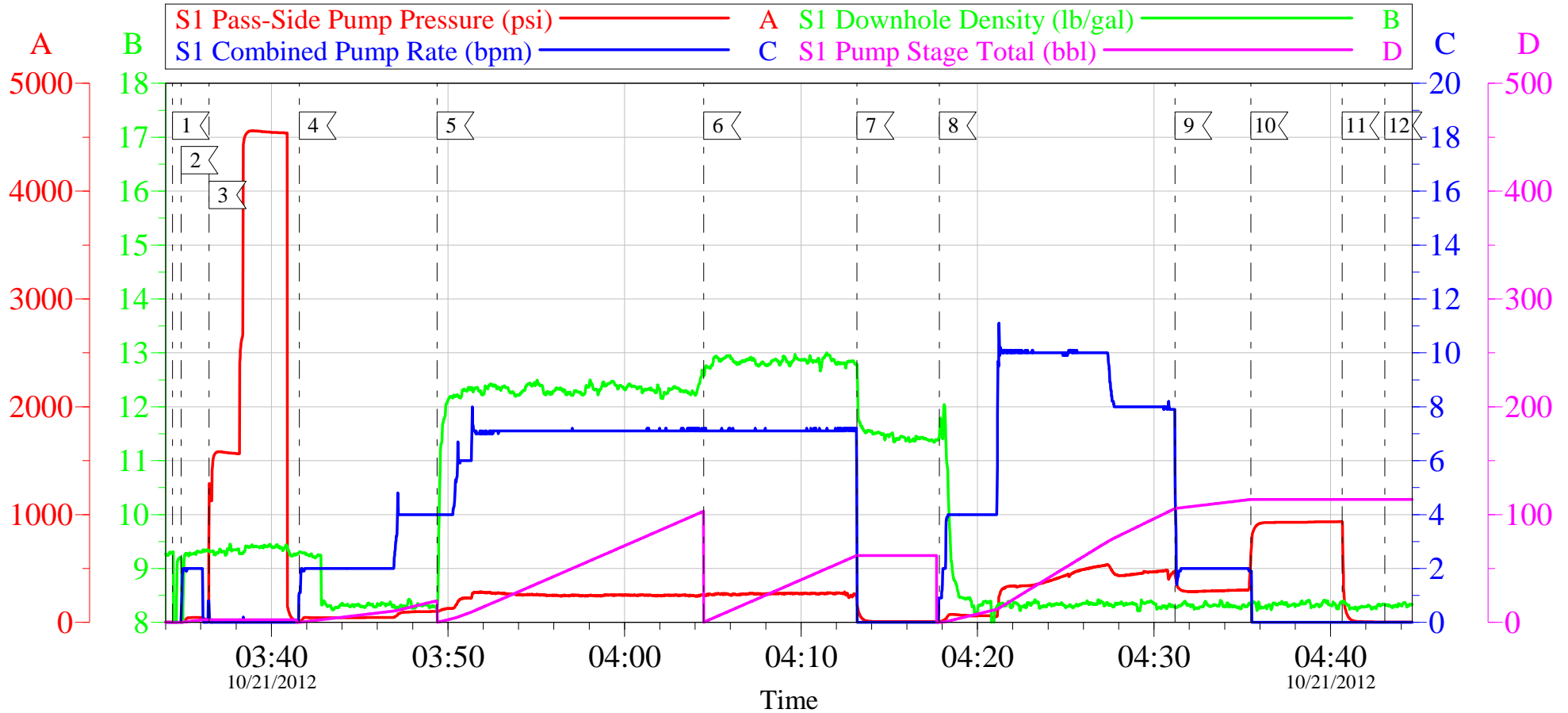
Activity Description	Date/Time	Cht #	Rate bbl/min	Volume bbl		Pressure psig		Comments
				Stage	Total	Tubing	Casing	
Call Out	10/20/2012 15:00							ELITE # 3
Depart Yard Safety Meeting	10/20/2012 17:30							ALL HES EMPLOYEES
Arrive At Loc	10/20/2012 20:00							RIG PULLING DRILL PIPE HES CREW ARRIVED ON TIME AND WAS ASKED TO WAIT OFF LOCATION PER CO REP REQUEST
Assessment Of Location Safety Meeting	10/21/2012 02:30							ALL HES EMPLOYEES
Pre-Rig Up Safety Meeting	10/21/2012 02:35							ALL HES EMPLOYEES
Rig-Up Equipment	10/21/2012 02:45							1 F-550 PICKUP 1 HT-400 PUMP TRUCK 2 660 BULK TRUCK
Pre-Job Safety Meeting	10/21/2012 03:00							ALL HES EMPLOYEES AND RIG CREW
Start Job	10/21/2012 03:34							TD: 1530 TP: 1510 SJ: 47 CSG: 9 5/8 32.3# OH: 13 1/2 MUD WT 9.8 VIS: 53 RIG CIRCULATED FOR 1 HOUR @ 16 BBLS MIN 330PSI GAS @ 50
Test Lines	10/21/2012 03:36					4561.0		PRESSURE TEST OK
Pump Spacer	10/21/2012 03:41		4	20	20		101.0	FRESH WATER SPACER
Activity Description	Date/Time	Cht #	Rate bbl/min	Volume bbl		Pressure psig		Comments
				Stage	Total	Tubing	Casing	

Pump Lead Cement	10/21/2012 03:49		7	101.7	101.7		270.0	240 SKS 12.3 PPG 2.38 YEILD 13.75 GAL / SK LEAD CEMENT WEIGHT VERIFIED VIA MUD SCALES THROUGH OUT LEAD CEMENT
Pump Tail Cement	10/21/2012 04:04		7	60.1	60.1		270.0	160 SKS 12.8 PPG 2.11 YEILD 11.75 GAL / SK TAIL CEMENT WEIGHT VERIFIED VIA MUD SCALES THROUGH OUT TAIL CEMENT
Shutdown	10/21/2012 04:13							
Drop Plug	10/21/2012 04:15							PLUG AWAY NO PROBLEMS
Pump Displacement	10/21/2012 04:17		10	115.1	115.1		478.0	FRESH WATER DISPLACEMENT HES WASHED PUMP UP ON TOP OF THE PLUG PER CO-REP REQUEST
Slow Rate	10/21/2012 04:31		2	105.1	105.1		306.0	SLOW RATE TO BUMP PLUG
Bump Plug	10/21/2012 04:35		2	115.1	115.1		310.0	BUMP PLUG @ 310 AND TOOK PRESSURE UP TO 930 PSI
Check Floats	10/21/2012 04:40							FLOATS HELD 1 BBL BACK TO DISPLACEMENT TANKS
End Job	10/21/2012 04:43							WELL HAD GOOD CIRCULATION THROUGH OUT CEMENT JOB GOT 35 BBLs OF CEMENT TO SURFACE RIG USED 40LB SUGAR
Pre-Rig Down Safety Meeting	10/21/2012 04:50							ALL HES EMPLOYEES
Rig-Down Equipment	10/21/2012 05:00							
Pre-Convoy Safety Meeting	10/21/2012 05:50							ALL HES EMPLOYEES
Crew Leave Location	10/21/2012 06:00							THANKS FOR USING HALLIBURTON CEMENT CHRIS KUKUS AND CREW
Activity Description	Date/Time	Cht #	Rate bbl/ min	Volume bbl		Pressure psig		Comments
				Stage	Total	Tubing	Casing	

Other	10/21/2012 06:01							TICKET CHANGES: CHANGED DEPTH CHARGE TO 1530, TOOK DARRICK CHARGE OFF, ADDED 1 ADD HOUR, CHANGED SUGAR TO 40 LB
-------	---------------------	--	--	--	--	--	--	--

WPX - KP 434-9

9 5/8 SURFACE



Local Event Log

1	START JOB	03:34:23	2	FILL LINES	03:34:53
3	TEST LINES	03:36:28	4	PUMP FRESH WATER SPACER	03:41:34
5	PUMP LEAD CEMENT	03:49:23	6	PUMP TAIL CEMENT	04:04:29
7	SHUT DOWN / DROP PLUG	04:13:10	8	PUMP FRESH WATER DISPLACEMENT	04:17:50
9	SLOW RATE	04:31:11	10	BUMP PLUG	04:35:29
11	CHECK FLOATS	04:40:40	12	END JOB	04:43:05

Customer: WPX
Well Description: KP 434-9
Company Rep: MATT HUTSON

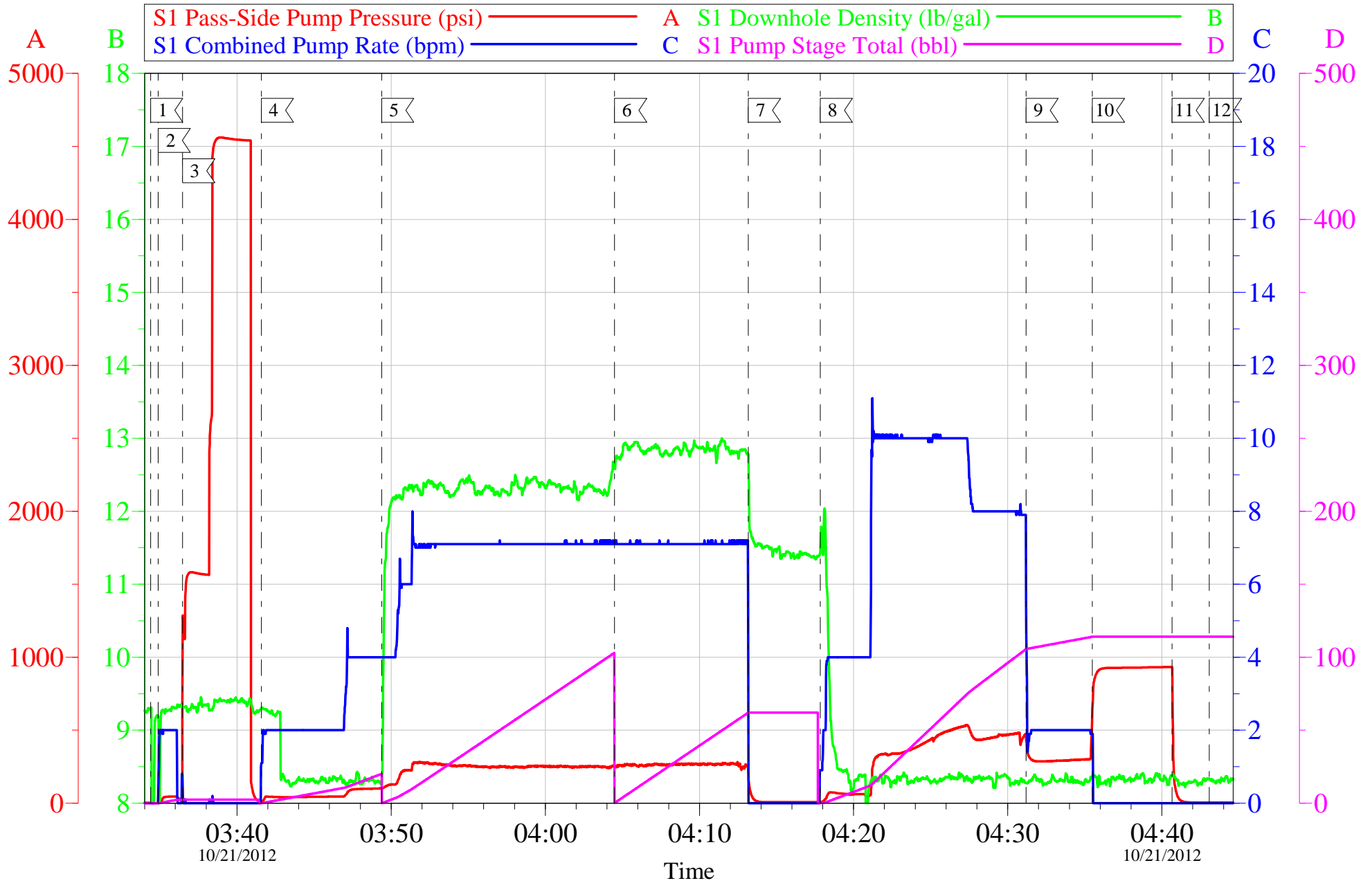
Job Date: 20-Oct-2012
Job Type: SURFACE
Cement Supervisor: CHRIS KUKUS

Sales Order #: 9844392
ADC Used: YES
Elite # 3: WESLEY GOWEN

OptiCem v6.4.10
21-Oct-12 04:47

WPX - KP 434-9

9 5/8 SURFACE



Customer: WPX
Well Description: KP 434-9
Company Rep: MATT HUTSON

Job Date: 20-Oct-2012
Job Type: SURFACE
Cement Supervisor: CHRIS KUKUS

Sales Order #: 9844392
ADC Used: YES
Elite # 3: WESLEY GOWEN

OptiCem v6.4.10
21-Oct-12 04:48

HALLIBURTON

Water Analysis Report

Company: WPX

Submitted by: CHRIS KUKUS

Attention: J. TROUT/C.MARTINEZ

Lease KP

Well # 434-9

Date: 10/20/2012

Date Rec.: 10/20/2012

S.O.# 9844392

Job Type: SURFACE

Specific Gravity	<i>MAX</i>	1
pH	<i>8</i>	6.8
Potassium (K)	<i>5000</i>	0 Mg / L
Calcium (Ca)	<i>500</i>	120 Mg / L
Iron (FE2)	<i>300</i>	0 Mg / L
Chlorides (Cl)	<i>3000</i>	0 Mg / L
Sulfates (SO ₄)	<i>1500</i>	UNDER 200 Mg / L
Chlorine (Cl ₂)		0 Mg / L
Temp	<i>40-80</i>	50 Deg
Total Dissolved Solids		130 Mg / L

Respectfully: CHRIS KUKUS

Title: CEMENTING SUPERVISOR

Location: Grand Junction, CO

NOTICE:

This report is limited to the described sample tested. Any person using or relying on this report agrees that Halliburton shall not be liable for any loss or damage whether due to act or omission resulting from such report or its

Sales Order #: 9844392	Line Item: 10	Survey Conducted Date: 10/21/2012
Customer: WPX ENERGY ROCKY MOUNTAIN LLC-EBUS		Job Type (BOM): CMT SURFACE CASING BOM
Customer Representative: MATT HUTSON		API / UWI: (leave blank if unknown) 05-045-21200
Well Name: KP		Well Number: 434-9
Well Type: Development Well	Well Country: United States of America	
H2S Present: No	Well State: Colorado	Well County: Garfield

Dear Customer,

We hope that you were satisfied with the service quality of this job performed by Halliburton. It is the aim of our management and service personnel to deliver equipment and service of a standard unmatched in the service sector of the energy industry.

Please take the time to let us know if our performance met with your satisfaction. Please be as critical as possible to ensure we constantly improve our service. Your comments are of great value to us and are intended for the exclusive use of Halliburton.

CUSTOMER SATISFACTION SURVEY

CATEGORY	CUSTOMER SATISFACTION RESPONSE	
Survey Conducted Date	The date the survey was conducted	10/21/2012
Survey Interviewer	The survey interviewer is the person who initiated the survey.	CHRISTOPHER KUKUS (HX35027)
Customer Participation	Did the customer participate in this survey? (Y/N)	Yes
Customer Representative	Enter the Customer representative name	MATT HUTSON
HSE	Was our HSE performance satisfactory? Circle Y or N	Yes
Equipment	Were you satisfied with our Equipment? Circle Y or N	Yes
Personnel	Were you satisfied with our people? Circle Y or N	Yes
Customer Comment	Customer's Comment	

CUSTOMER SIGNATURE

Sales Order #: 9844392	Line Item: 10	Survey Conducted Date: 10/21/2012
Customer: WPX ENERGY ROCKY MOUNTAIN LLC-EBUS		Job Type (BOM): CMT SURFACE CASING BOM
Customer Representative: MATT HUTSON		API / UWI: (leave blank if unknown) 05-045-21200
Well Name: KP		Well Number: 434-9
Well Type: Development Well	Well Country: United States of America	
H2S Present: No	Well State: Colorado	Well County: Garfield

KEY PERFORMANCE INDICATORS

General	
Survey Conducted Date The date the survey was conducted	10/21/2012

Cementing KPI Survey	
Type of Job Select the type of job. (Cementing or Non-Cementing)	0
Select the Maximum Deviation range for this Job What is the highest deviation for the job you just completed? This may not be the maximum well deviation.	Vertical
Total Operating Time (hours) Total Operating Hours Including Rig-up, Pumping, Rig-down. Enter in decimal format.	3
HSE Incident, Accident, Injury HSE Incident, Accident, Injury. This should be recordable incidents only.	No
Was the job purpose achieved? Was the job delivered correctly as per customer agreed design?	Yes
Operating Hours (Pumping Hours) Total number of hours pumping fluid on this job. Enter in decimal format.	1.5
Customer Non-Productive Rig Time (hrs) Lost time due to Halliburton in the start, execution, or completion of an ordered service or product, or delays in a follow-on service. Enter in decimal format. 0 if none.	0
Type of Rig Classification Job Was Performed Type Of Rig (classification) Job Was Performed On	Drilling Rig (Portable)
Number Of JSAs Performed Number Of Jsas Performed	6
Number of Unplanned Shutdowns Unplanned shutdown is when injection stops for any period of time.	0
Was this a Primary Cement Job (Yes / No)	Yes

Sales Order #: 9844392	Line Item: 10	Survey Conducted Date: 10/21/2012
Customer: WPX ENERGY ROCKY MOUNTAIN LLC-EBUS		Job Type (BOM): CMT SURFACE CASING BOM
Customer Representative: MATT HUTSON		API / UWI: (leave blank if unknown) 05-045-21200
Well Name: KP		Well Number: 434-9
Well Type: Development Well	Well Country: United States of America	
H2S Present: No	Well State: Colorado	Well County: Garfield

Primary Cement Job= Casing job, Liner job, or Tie-back job.	
Did We Run Wiper Plugs? Did We Run Top And Bottom Casing Wiper Plugs?	Top
Mixing Density of Job Stayed in Designed Density Range (0-100%) Density Range defined as +/- .20 ppg. Calculation: Total BBLs cement mixed at designed density divided by total BBLs of cement multiplied by 100	90
Was Automated Density Control Used? Was Automated Density Control (ADC) Used ?	Yes
Pump Rate (percent) of Job Stayed At Designed Pump Rate Pump Rate range defined as +/- 1bbl/min. Calculation: Total BBLs of fluid pumped at the designed rate divided by Total BBLs of fluid pumped, multiplied by 100	90
Nbr of Remedial Sqz Jobs Rqd - Competition Number Of Remedial Squeeze Jobs Required After Primary Job Performed By Competition	0
Nbr of Remedial Plug Jobs Rqd - HES Number Of Remedial Plug Jobs Needed After Primary Plug Pumped By HES	0
Nbr of Remedial Sqz Jobs Rqd - HES Number Of Remedial Squeeze Jobs Required After Primary Job Performed By HES	0