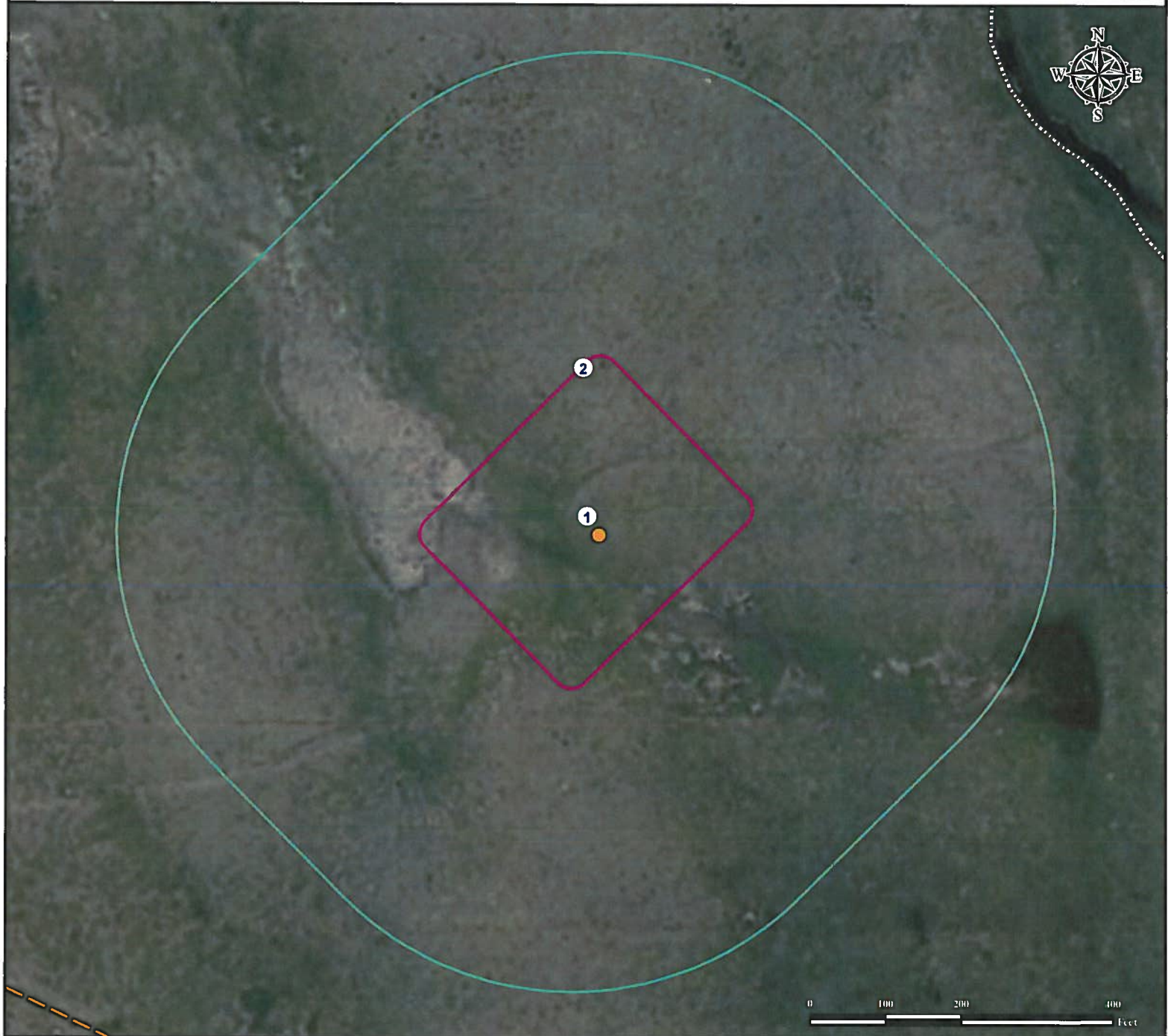


Location Drawing

BUSYGULLY 13-54-12-3

NE¼ NW¼ SECTION 12, TOWNSHIP 13 SOUTH, RANGE 54 WEST OF THE 6TH PRINCIPAL MERIDIAN



1. Proposed Well BUSYGULLY 13-54-12-3.

2. Operational Disturbance Area.

There are No Visible Improvements Within a 400' radius of the Disturbance Area of the Proposed Oil and Gas Location.

Legend

● Proposed Well

□ Disturbance Area

▬ Stream

□ 400' Radius

▬ Fence

Reference Location

** All Measurements are Made from
Reference Well BUSYGULLY 13-54-12-3 **
Lat: 38.933676° Long: -103.399755° (NAD 83)
Elevation: 4843 Feet

Surface Use: Rangeland



Use our resources to find yours!
www.petro-fs.com
(303) 928-7128

Field Date: 10/17/2012
Drafting Date: 10/19/2012
Drafter: PAH
Revision:

Data Sources:
- Aerial courtesy of NAIP (2011)

Prepared for:

PINE RIDGE OIL & GAS, LLC