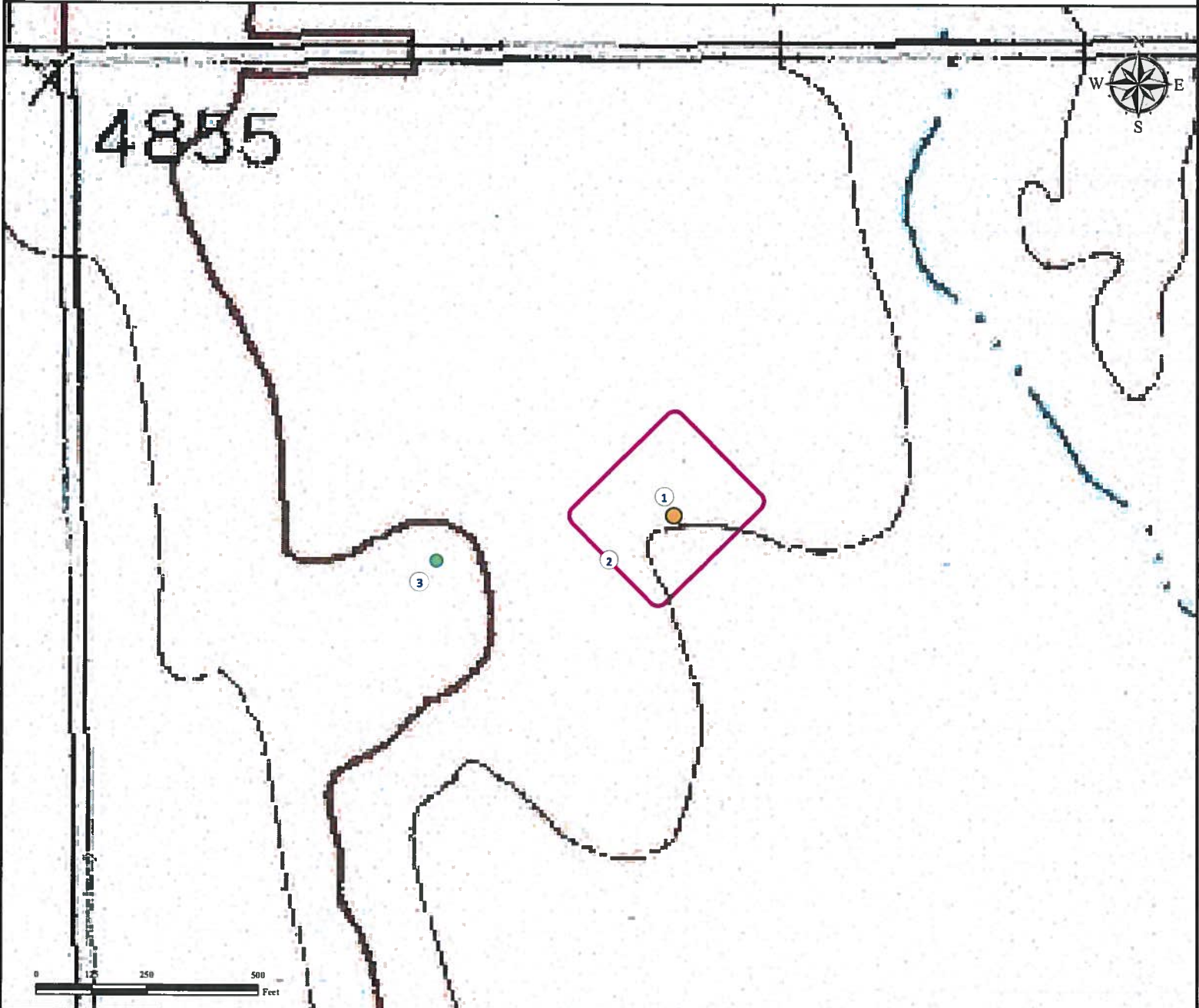


Reference Area Map

BUSYGULLY 13-54-12-3

NE¼ NW¼ SECTION 12, TOWNSHIP 13 SOUTH, RANGE 54 WEST OF THE 6TH PRINCIPAL MERIDIAN



1. Proposed Well BUSYGULLY 13-54-12-3.

2. Operational Disturbance Area.

3. Reference Photo Point.

Legend



Proposed Well



Disturbance Area



Reference Photo Point

Reference Location

** All Measurements are Made from

● Reference Photo Point **

Lat: 38.933422° Long: -103.401643° (NAD 83)
Elevation: 4855 Feet

Surface Use: Rangeland



Use our resources to find yours!
www.petro-fs.com
(303) 928-7128

Field Date: 10/17/2012
Drafting Date: 10/19/2012
Drafter: PAH
Revision:

Data Sources:
- TOPO courtesy of USGS

Prepared for:

PINE RIDGE OIL & GAS, LLC