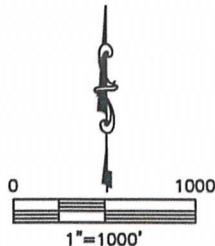
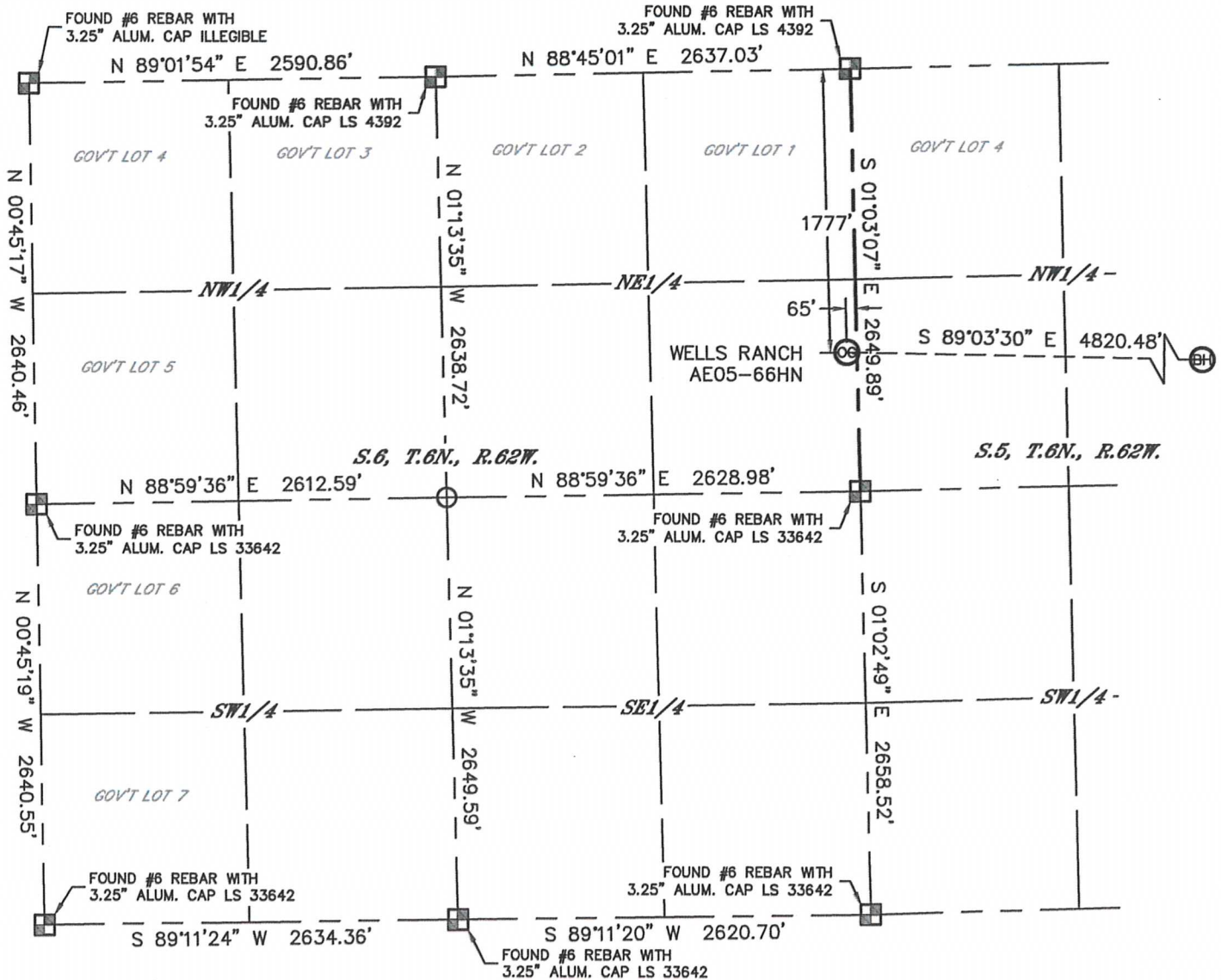


WELL LOCATION CERTIFICATE

SECTION: 6
TOWNSHIP: 6N
RANGE: 62W

THIS MAP DOES NOT REPRESENT A BOUNDARY SURVEY



In accordance with a request from Matt Verbit with Noble Energy Inc. Lat40°, Inc. has determined the surface location of the WELLS RANCH AE05-66HN to be 1777' from the NORTH line and 65' from the EAST line as measured at right angles from the section lines of Section 6, Township 6 North, Range 62 West and the bottom hole to be 1980' from the NORTH line and 535' from the EAST line as measured at right angles from the section lines of Section 5, Township 6 North, Range 62 West of the Sixth Principal Meridian, County of Weld, State of Colorado.

I hereby state that this Well Location Certificate was prepared by me, or under my direct supervision, that the fieldwork was completed on 7/2/2012, for and on behalf of Noble Energy Inc. That this is not a Land Survey Plat or an Improvement Survey Plat, and that it is not to be relied upon for establishment of fence, building, or other future improvement lines.

NOTE:

- 1) Bearings shown are Grid Bearings of the Colorado State Plane Coordinate System, North Zone, North American Datum 1983/2007. The lineal dimensions as contained herein are based upon the "U.S. Survey Foot."
- 2) Ground elevations are based on an observed GPS elevation (NAVD 1988 DATUM).
- 3) NEAREST EXISTING WELL: NONE WITHIN SECTION
- 4) IMPROVEMENTS: See LOCATION DRAWING for all visible Improvements within 400' of disturbed area.
- 5) SURFACE USE: RANGELAND
- 6) INSTRUMENT OPERATOR: ADAM KELLY

NOTE

According to Colorado law, you must commence any legal action based upon any defect in this W.L.C. within three years after you discover such defect. In no event, may any action based upon any defect in this survey be commenced more than ten years after the date of the certificate shown hereon. (13-80-105 C.R.S.)

LEGEND

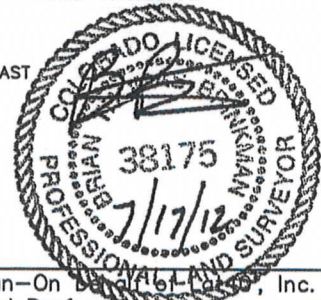
- = ALIQUOT MONUMENT AS DESCRIBED
- = CALCULATED POSITION

SURFACE LOCATION

LAT: 40.51811°N
LONG: 104.35624°W
PDOP: 2.3
ELEV: 4946'
1/4, 1/4: SE1/4NE1/4
NEAREST PROPERTY LINE: 65' EAST

BOTTOM HOLE

LAT: 40.51772°N
LONG: 104.33891°W



SHEET 1 OF 2

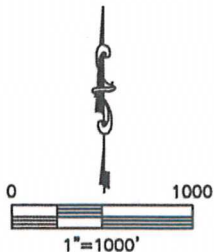
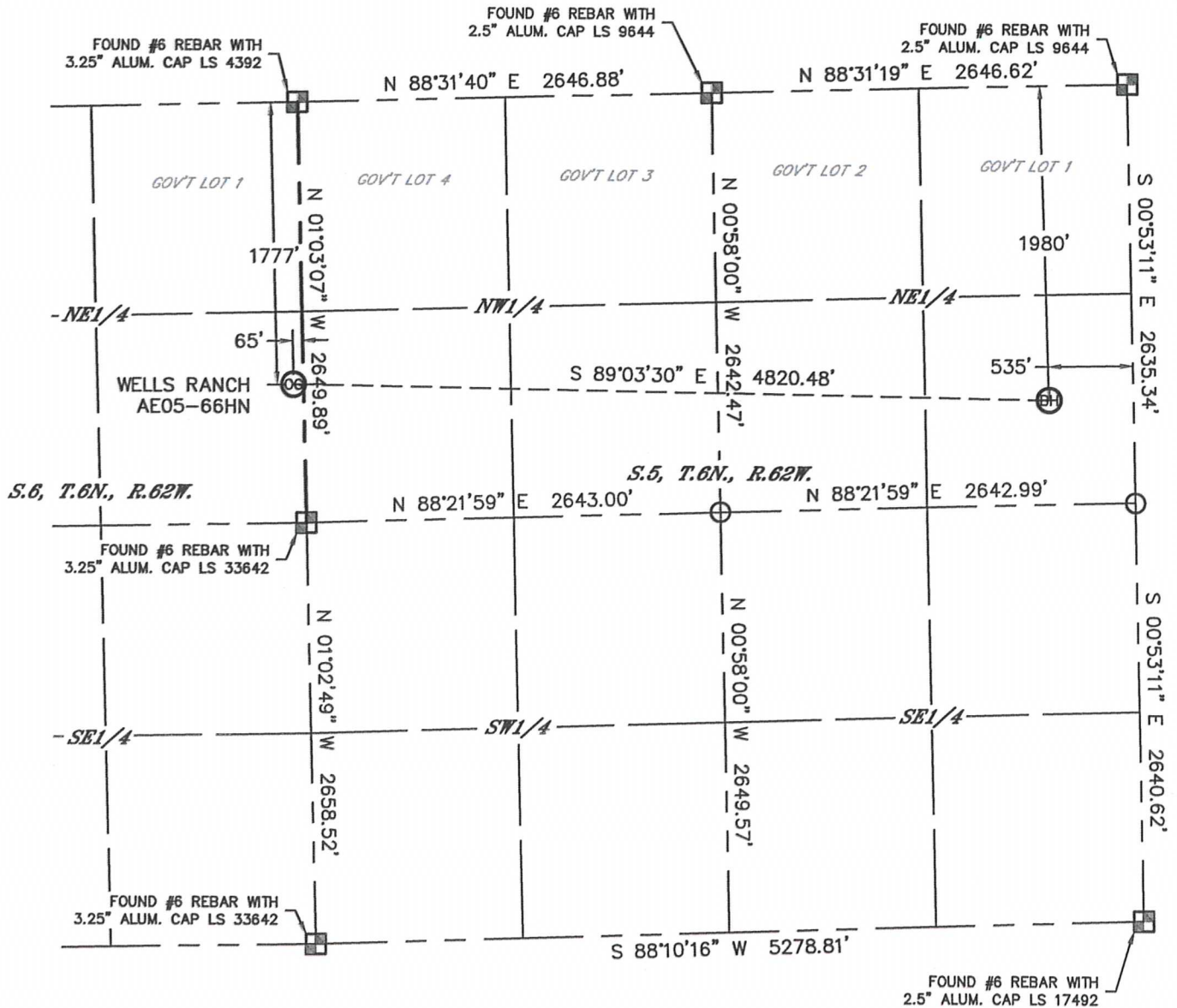
Brian T. Brinkman—On behalf of Lat40°, Inc.
Colorado Licensed Professional Land Surveyor No. 38175

DATE: 7/17/2012
PROJECT#: 2012094



WELL LOCATION CERTIFICATE

THIS MAP DOES NOT REPRESENT A BOUNDARY SURVEY

SECTION: 6
TOWNSHIP: 6N
RANGE: 62W

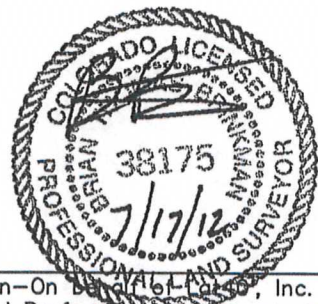


NOTE
According to Colorado law, you must commence any legal action based upon any defect in this W.L.C. within three years after you discover such defect. In no event, may any action based upon any defect in this survey be commenced more than ten years after the date of the certificate shown hereon. (13-80-105 C.R.S.)

LEGEND
 = ALIQUOT MONUMENT AS DESCRIBED
 = CALCULATED POSITION

SHEET 2 OF 2

Brian T. Brinkman—On behalf of Lat40°, Inc.
Colorado Licensed Professional Land Surveyor No. 38175
DATE: 7/17/2012
PROJECT#: 2012094

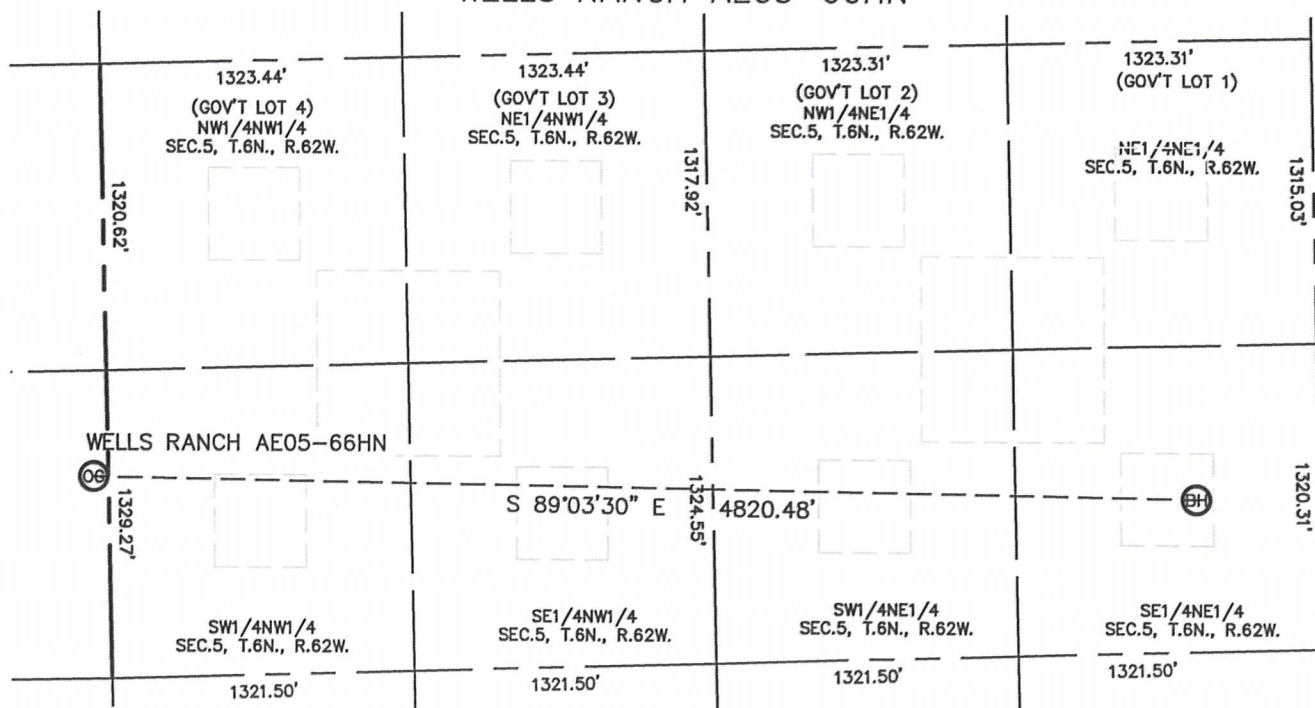


Lat40°, Inc. 1635 Foxtrail Drive, Suite 325 Loveland, CO 970-776-3321

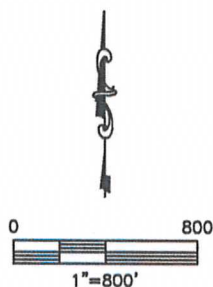
SITE SKETCH

WELLS RANCH AE05-66HN

SECTION: 6
TOWNSHIP: 6N
RANGE: 62W



NOTE: NO EXISTING WELLS ADJACENT TO PROPOSED WELL BORE.



DATE: 7/17/2012
PROJECT#: 2012094