

Project: Wattenberg Field
Site: AE (Sec.6-T6N-R62W) Weld County, CO
Well: Wells Ranch AE05-65-1HN
Wellbore: Original Drilling
Design: APD - Rev 0

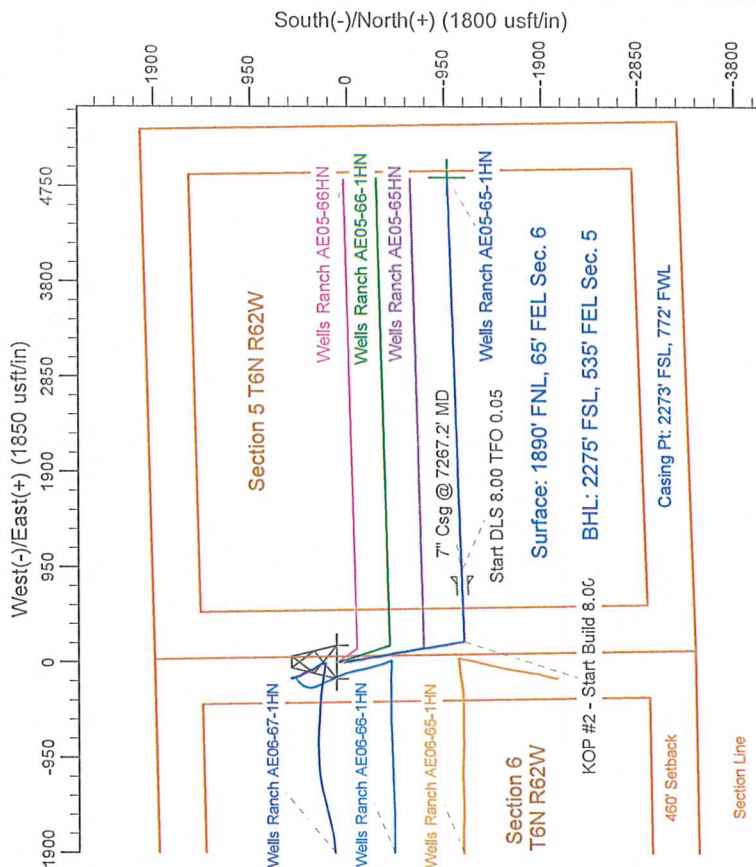
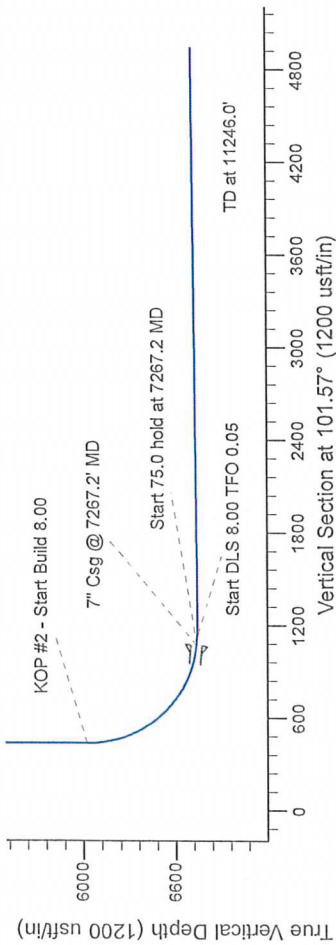
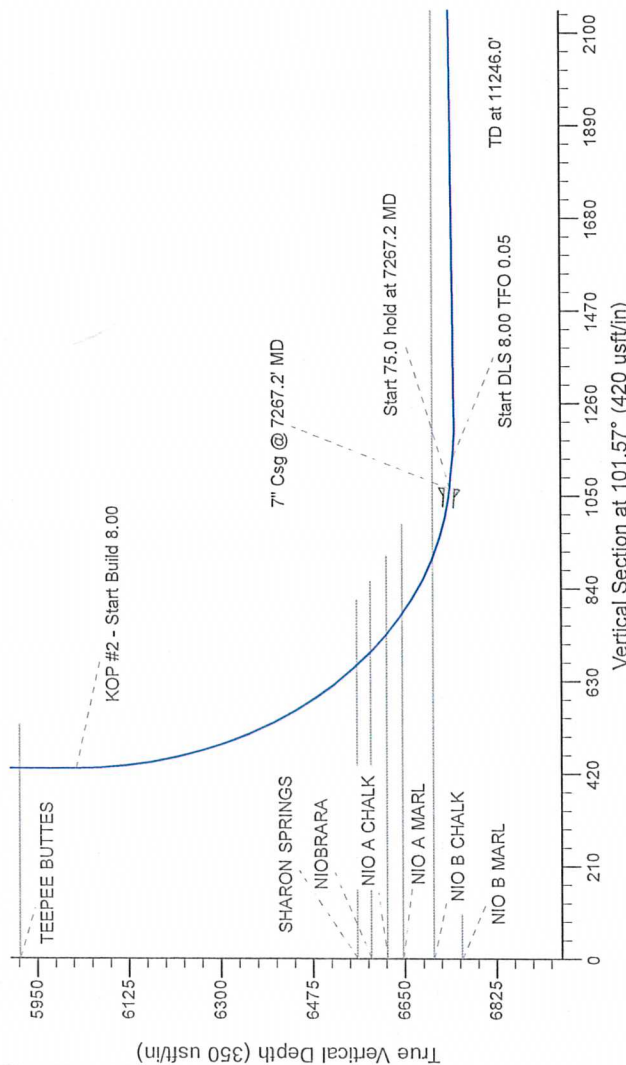
Northern Region Drilling

Geodetic System: US State Plane 1983
Datum: North American Datum 1983
Ellipsoid: GRS 1980
Zone: Colorado Northern Zone
System Datum: Mean Sea Level

SECTION DETAILS

Sec	MD	Inc	Azi	TVD	+N/S	+E/W	Dleg	VFace	Vsect	Target
1	0.0	0.00	0.00	0.0	0.0	0.0	0.00	0.00	0.0	
2	1200.0	0.00	0.00	1200.0	0.0	0.0	0.00	0.00	0.0	
3	1960.2	19.00	169.84	1946.3	-123.0	22.0	2.50	169.84	46.3	
4	4760.2	19.00	169.84	4593.7	-1020.4	183.0	0.00	0.00	384.0	
5	5520.3	0.00	0.00	5340.0	-1143.4	205.0	2.50	180.00	430.2	
6	6204.7	0.00	0.00	6024.4	-1143.4	205.0	0.00	0.00	430.2	
7	7267.2	85.00	88.10	6737.8	-1121.7	858.4	8.00	88.10	1066.0	
8	7342.2	85.00	88.10	6744.4	-1119.3	933.1	0.00	0.00	1138.7	
9	7410.9	90.50	88.10	6747.1	-1117.0	1001.7	8.00	0.05	1205.4	
10	11246.0	90.50	88.10	6713.9	-890.1	4834.5	0.00	0.00	4934.9	

Wells Ranch AE05-65-1HN BHL 2275' FSL, 535' FEL



T G M

Azimuths to Grid North
True North: -0.74°
Magnetic North: 7.66°

Magnetic Field
Strength: 53100.8snT
Dip Angle: 67.17°
Date: 12/13/2012
Model: IGRF200510

WELL DETAILS: Wells Ranch AE05-65-1HN			
North	East	Ground Level	Longitude
1433525.92	3317986.66	4948.0	-104.356240
Plan: APD - Rev 0 (Wells Ranch AE05-65-1HN) Original Drilling			
Created By: Carrie Willers		Date: 13/26, December 13 2012	
Checked:		Date:	
Reviewed:		Date:	
Approved:		Date:	