

The Road to Excellence Starts with Safety

Sold To #: 300721	Ship To #: 2884188	Quote #:	Sales Order #: 9502945
Customer: WPX ENERGY ROCKY MOUNTAIN LLC-EBUS		Customer Rep: Wilson, W.C.	
Well Name: RMV		Well #: 71-34	API/UWI #: 05-045-19849
Field: Rulison	City (SAP): RIFLE	County/Parish: Garfield	State: Colorado
Lat: N 39.49 deg. OR N 39 deg. 29 min. 24.544 secs.		Long: W 107.873 deg. OR W -108 deg. 7 min. 38.723 secs.	
Contractor: NABORS 577		Rig/Platform Name/Num: NABORS 577	
Job Purpose: Cement Surface Casing			
Well Type: Development Well		Job Type: Cement Surface Casing	
Sales Person: MAYO, MARK	Srv Supervisor: MAGERS, MICHAEL	MBU ID Emp #: 339439	

Job Personnel

HES Emp Name	Exp Hrs	Emp #	HES Emp Name	Exp Hrs	Emp #	HES Emp Name	Exp Hrs	Emp #
BORSZICH, STEPHEN A	5	412388	MAGERS, MICHAEL Gerard	5	339439	SPARKS, CLIFFORD Paul	5	502476

Equipment

HES Unit #	Distance-1 way	HES Unit #	Distance-1 way	HES Unit #	Distance-1 way	HES Unit #	Distance-1 way
10872429	60 mile	11021972	60 mile	11027039	60 mile	11259886	60 mile
11808847	60 mile						

Job Hours

Date	On Location Hours	Operating Hours	Date	On Location Hours	Operating Hours	Date	On Location Hours	Operating Hours
05/31/2012	5	1						

TOTAL Total is the sum of each column separately

Job

Formation Name	Formation Depth (MD)	Top	Bottom	Form Type	Job depth MD	Job Depth TVD	Water Depth	Perforation Depth (MD)	From	To
				BHST	1200. ft					

Job Times

Date	Time	Time Zone
30 - May - 2012	22:00	MST
31 - May - 2012	02:30	MST
31 - May - 2012	07:35	MST
31 - May - 2012	08:35	MST
31 - May - 2012	09:30	MST

Well Data

Description	New / Used	Max pressure psig	Size in	ID in	Weight lbm/ft	Thread	Grade	Top MD ft	Bottom MD ft	Top TVD ft	Bottom TVD ft
-------------	------------	-------------------	---------	-------	---------------	--------	-------	-----------	--------------	------------	---------------

Sales/Rental/3rd Party (HES)

Description	Qty	Qty uom	Depth	Supplier
PLUG,CMTG,TOP,9 5/8,HWE,8.16 MIN/9.06 MA	1	EA		

Tools and Accessories

Type	Size	Qty	Make	Depth	Type	Size	Qty	Make	Depth	Type	Size	Qty	Make
Guide Shoe					Packer					Top Plug	9.625	1	HES
Float Shoe					Bridge Plug					Bottom Plug			
Float Collar					Retainer					SSR plug set			
Insert Float										Plug Container			
Stage Tool										Centralizers	9.625	1	HES

Miscellaneous Materials

Gelling Agt	Conc	Surfactant	Conc	Acid Type	Qty	Conc	%
Treatment Fld	Conc	Inhibitor	Conc	Sand Type	Size	Qty	

Fluid Data

Stage/Plug #: 1									
Fluid #	Stage Type	Fluid Name	Qty	Qty uom	Mixing Density lbm/gal	Yield ft3/sk	Mix Fluid Gal/sk	Rate bbl/min	Total Mix Fluid Gal/sk

Stage/Plug #: 1

Stage/Plug #: 1									
Fluid #	Stage Type	Fluid Name	Qty	Qty uom	Mixing Density lbm/gal	Yield ft ³ /sk	Mix Fluid Gal/sk	Rate bbl/min	Total Mix Fluid Gal/sk
1	Fresh Water		20.00	bbl	8.33	.0	.0	.0	
2	Lead Cement	VERSACEM (TM) SYSTEM (452010)	160.0	sacks	12.3	2.38	13.75		13.75
	13.75 Gal	FRESH WATER							
3	Tail Cement	VERSACEM (TM) SYSTEM (452010)	160.0	sacks	12.8	2.11	11.75		11.75
	11.75 Gal	FRESH WATER							
4	Displacement Fluid		89.00	bbl	8.34	.0	.0	.0	
Calculated Values		Pressures		Volumes					
Displacement	89	Shut In: Instant		Lost Returns	0	Cement Slurry	128	Pad	
Top Of Cement	SURFACE	5 Min		Cement Returns	22	Actual Displacement	89	Treatment	
Frac Gradient		15 Min		Spacers	20	Load and Breakdown		Total Job	238
Rates									
Circulating	RIG	Mixing	8	Displacement	10/2	Avg. Job			8
Cement Left In Pipe	Amount	44.3 ft	Reason	Shoe Joint					
Frac Ring # 1 @	ID	Frac ring # 2 @	ID	Frac Ring # 3 @	ID	Frac Ring # 4 @	ID		
The Information Stated Herein Is Correct				Customer Representative Signature					

The Road to Excellence Starts with Safety

Sold To #: 300721	Ship To #: 2884188	Quote #:	Sales Order #: 9502945
Customer: WPX ENERGY ROCKY MOUNTAIN LLC-EBUS	Customer Rep: Wilson, W.C.		
Well Name: RMV	Well #: 71-34	API/UWI #: 05-045-19849	
Field: Rulison	City (SAP): RIFLE	County/Parish: Garfield	State: Colorado
Legal Description:			
Lat: N 39.49 deg. OR N 39 deg. 29 min. 24.544 secs.		Long: W 107.873 deg. OR W -108 deg. 7 min. 38.723 secs.	
Contractor: NABORS 577	Rig/Platform Name/Num: NABORS 577		
Job Purpose: Cement Surface Casing	Ticket Amount:		
Well Type: Development Well	Job Type: Cement Surface Casing		
Sales Person: MAYO, MARK	Srvc Supervisor: MAGERS, MICHAEL	MBU ID Emp #: 339439	

Activity Description	Date/Time	Cht #	Rate bbl/min	Volume bbl		Pressure psig		Comments
				Stage	Total	Tubing	Casing	
Call Out	05/30/2012 22:00							
Pre-Convoy Safety Meeting	05/31/2012 00:50							HES ALL PRESENT
Crew Leave Yard	05/31/2012 01:00							HES ALL PRESENT
Arrive At Loc	05/31/2012 02:30							HES ARRIVED ON LOCATION 1.5 hours EARLY/TIME STARTS AT 04:00/RIG WAS PULLING DRILL PIPE WHEN HES ARRIVED
Assessment Of Location Safety Meeting	05/31/2012 02:35							LOCATION IN GOOD CONDITION
Pre-Rig Up Safety Meeting	05/31/2012 05:50							JSA ON RIGGING UP/RIGGING UP AFTER CASERS WERE RIGGED DOWN AND OUT OF THE WAY/RIG CIRCULATED THRU THE PLUG CONTAINER WHILE HES RIGGED UP AND PRIMED PUMPS
Rig-Up Equipment	05/31/2012 06:00							1 PICKUP 1 ELITE 1 BULK TRUCKS
Safety Huddle	05/31/2012 07:20							RIG CREW AND HES ALL PRESENT
Start Job	05/31/2012 07:35							TD-1200 TP-1178.5' SJ- 44.3 MW- 9.4 CSG- 9 5/8" 32# H-40 OH- 13 1/2"
Other	05/31/2012 07:36		2	2			28.0	FILL LINES
Pressure Test	05/31/2012 07:38		0.5	0.5			4625.0	PSI TEST OK

Sold To #: 300721

Ship To #: 2884188

Quote #:

Sales Order #:

9502945

SUMMIT Version: 7.3.0030

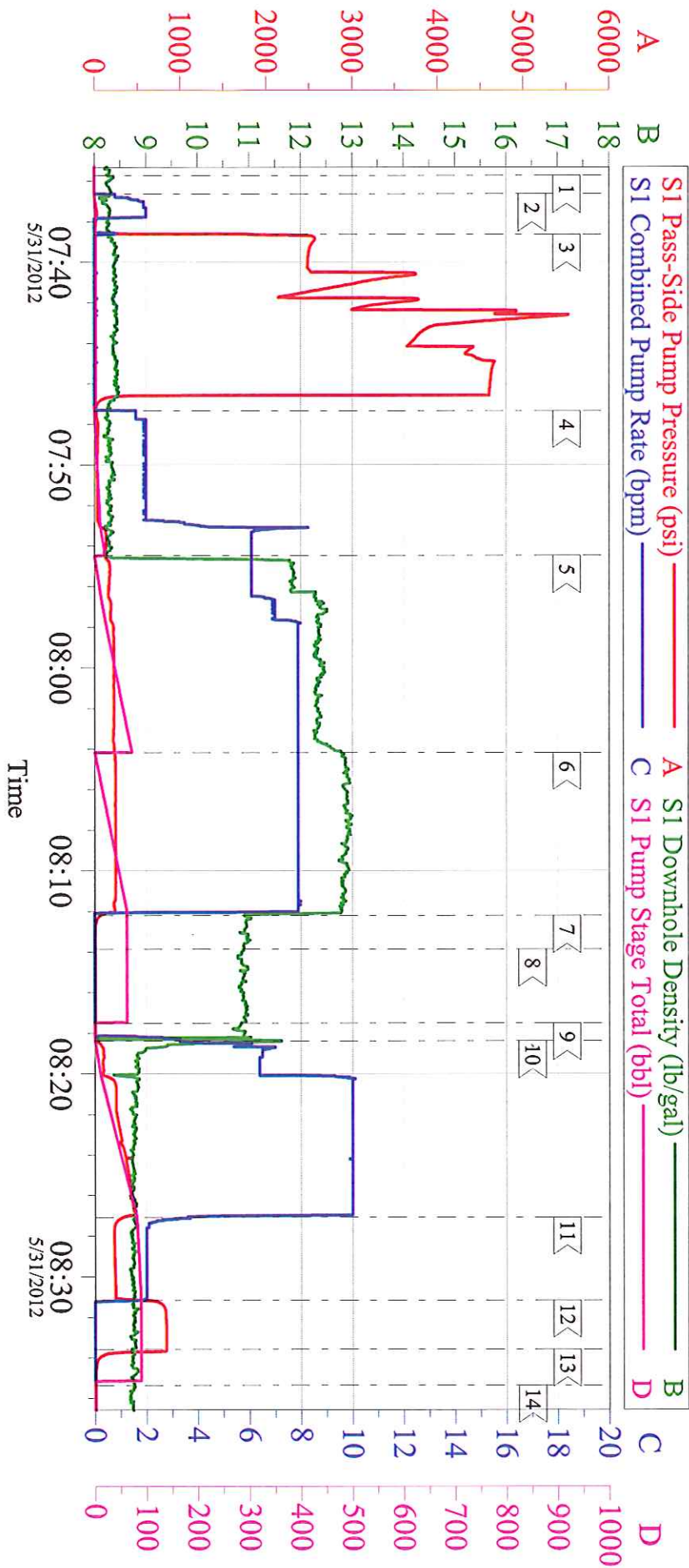
Tuesday, December 18, 2012 10:23:00

Cementing Job Log

Activity Description	Date/Time	Cht #	Rate bbl/min	Volume bbl		Pressure psig		Comments
				Stage	Total	Tubing	Casing	
Pump Spacer 1	05/31/2012 07:47		2	20			34.0	FRESH WATER
Pump Lead Cement	05/31/2012 07:54		8	68			229.0	VERSACEM 160 SKS 12.3 PPG 2.38 FT3/SK 13.75 GAL/SK
Pump Tail Cement	05/31/2012 08:04		8	60			244.0	VERSACEM 160 SKS 12.8 PPG 2.11 FT3/SK 11.75 GAL/SK
Shutdown	05/31/2012 08:12							CLEAN UP ON TOP OF PLUG
Drop Top Plug	05/31/2012 08:17							PLUG AWAY NO PROBLEMS
Pump Displacement	05/31/2012 08:18		10	79			456.0	FRESH WATER
Slow Rate	05/31/2012 08:27		2	10			225.0	GOT 22 BBLS OF CEMENT TO SURFACE
Bump Plug	05/31/2012 08:31		2	89			250.0	BUMPED PLUG
Check Floats	05/31/2012 08:33			89			827.0	FLOATS HELD/GOT 1/2 BBL BACK/ USED 80 LBS OF SUGAR
End Job	05/31/2012 08:35							HAD GOOD CIRCULATION THROUGHOUT JOB
Comment	05/31/2012 08:40							THANKS FOR USING HES AND THE CREW OF MIKE MAGERS

WPX MMV 71-34

9.625 SURFACE



Local Event Log

1 < START JOB	07:35:44	2 < FILL LINES	07:36:39
3 < PRESSURE TEST	07:38:38	4 < PUMP H2O SPACER	07:47:20
5 < PUMP LEAD CEMENT	07:54:29	6 < PUMP TAIL CEMENT	08:04:10
7 < SHUT DOWN	08:12:13	8 < WASH UP TUB	08:13:52
9 < DROP TOP PLUG	08:17:30	10 < PUMP FRSH WTR DISPLACEMENT	08:18:23
11 < SLOW RATE	08:27:05	12 < BUMP PLUG	08:31:10
13 < CHECK FLOATS	08:33:35	14 < END JOB	08:35:21

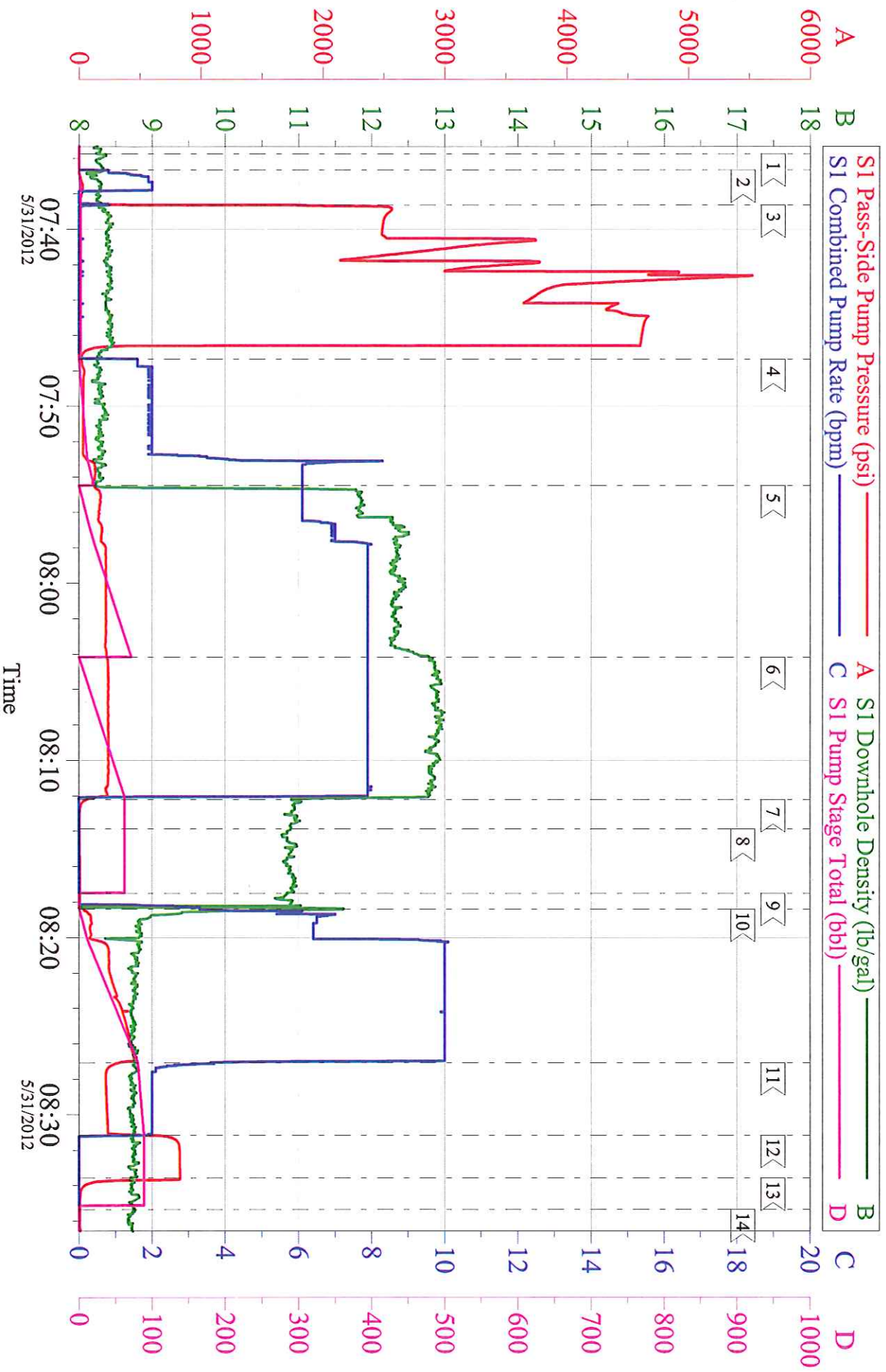
Customer: WPX NABORS 577
Well Description: RMV 71-34
Company Rep: W.C. WILSON

Job Date: 31-May-2012
Job Type: SURFACE
Cement Supervisor: MIKE MAGERS

Sales Order #: 9502945
ADC Used: YES
Elite # 7 STEVE BORSZICH

WPX MMV 71-34

9.625 SURFACE



Customer: WPX NABORS 577
Well Description: RMV 71-34
Company Rep: W.C. WILSON

Job Date: 31-May-2012
Job Type: SURFACE
Cement Supervisor: MIKE MAGERS

Sales Order #: 9502945
ADC Used: YES
Elite # 7 STEVE BORSZICH