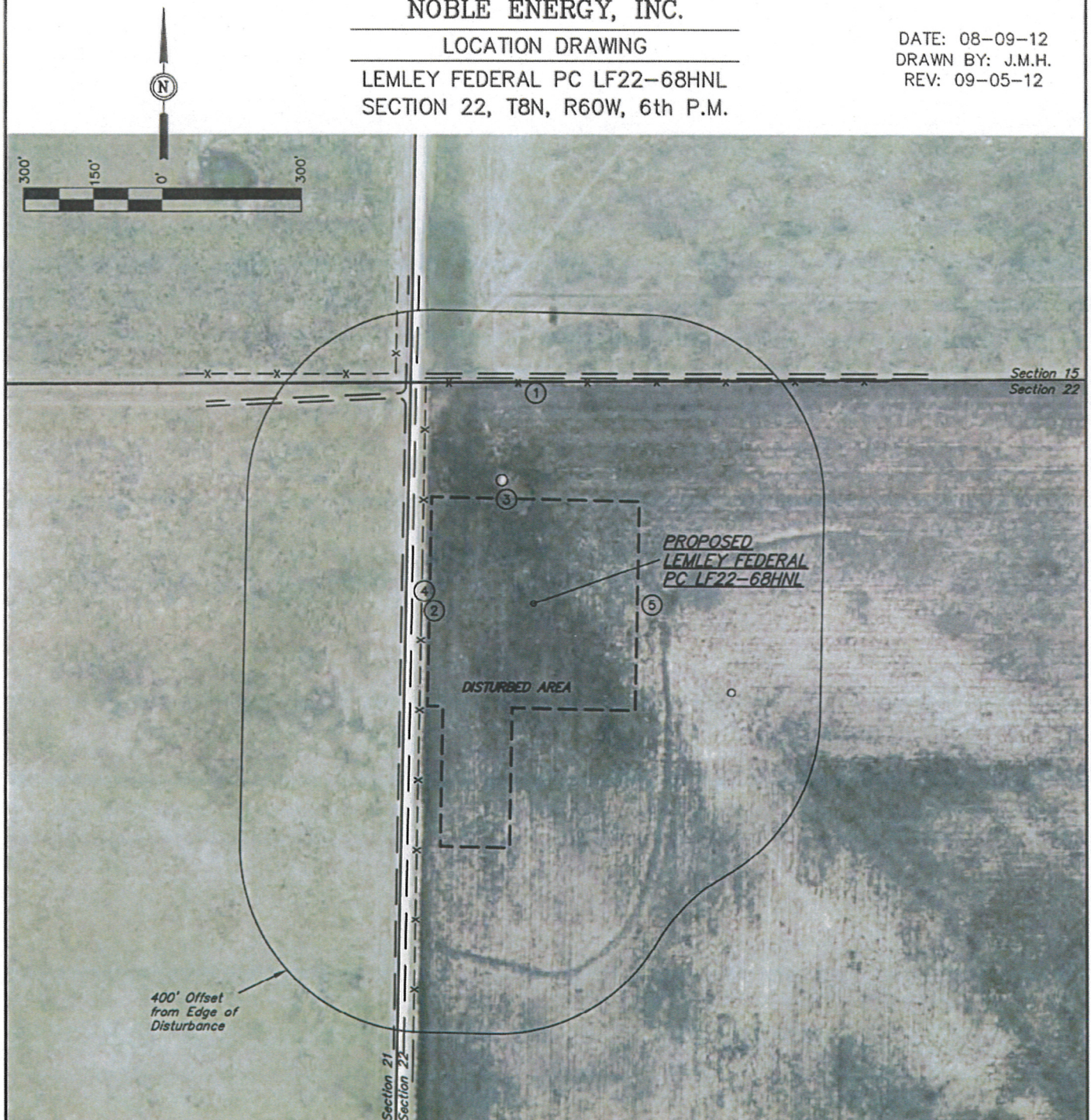


NOBLE ENERGY, INC.

LOCATION DRAWING

LEMLEY FEDERAL PC LF22-68HNL
SECTION 22, T8N, R60W, 6th P.M.

DATE: 08-09-12
DRAWN BY: J.M.H.
REV: 09-05-12



NOTE:
DIRECTION AND DISTANCE TO IMPROVEMENTS AND NEAREST FEATURES ARE FROM PROPOSED LEMLEY FEDERAL PC LF22-68HNL.

IMPROVEMENTS:

- | | |
|---------------------------------|----------------|
| ① 2-TRACK 489' N, 507' NW | ④ ROAD 263' W |
| ② FENCE 242' W, 474' N, 577' NW | ⑤ DITCH 290' E |
| ③ WATER WELL 273' N, 469' SE | |

NEAREST FEATURE: BUILDING 5280' +, PUBLIC ROAD
263' W (CR 103), ABOVE GROUND UTILITY 4995' E,
RAILROAD 5280' +, PROPERTY LINE 275' W

UINTAH ENGINEERING & LAND SURVEYING
85 So. 200 East * Vernal, Utah 84078 * (435) 789-1017