

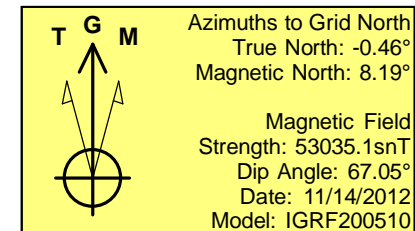
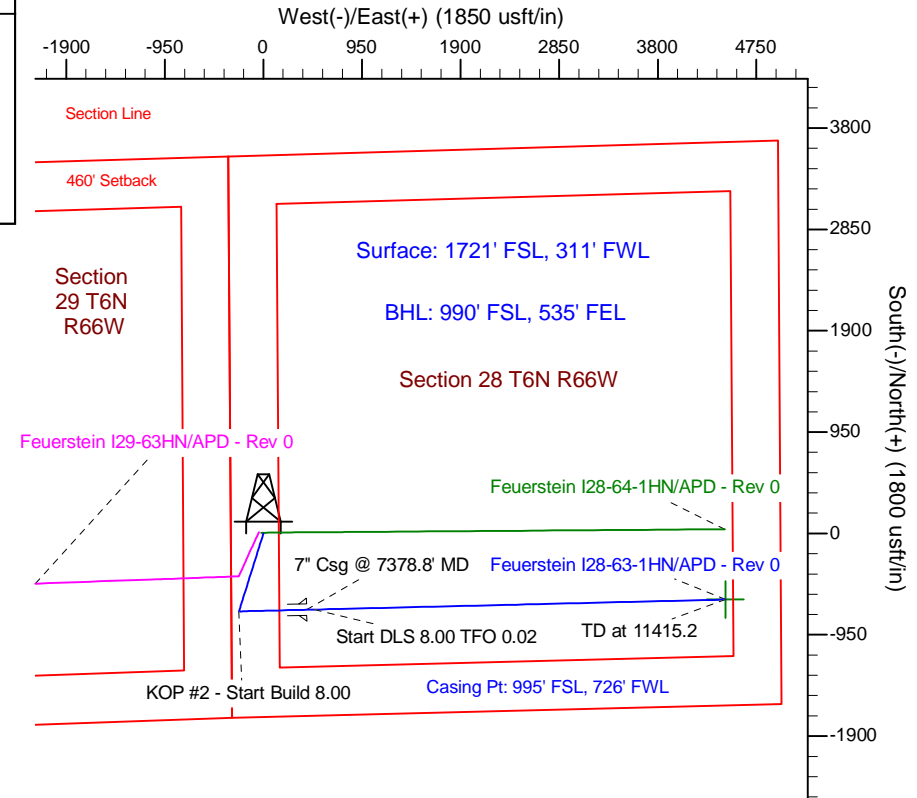
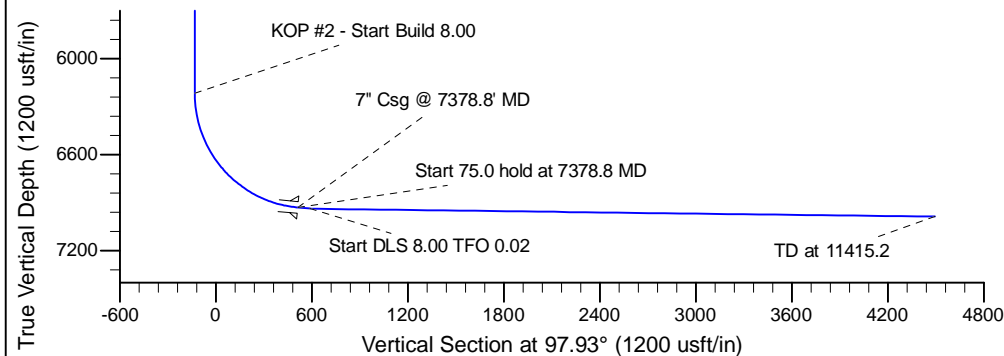
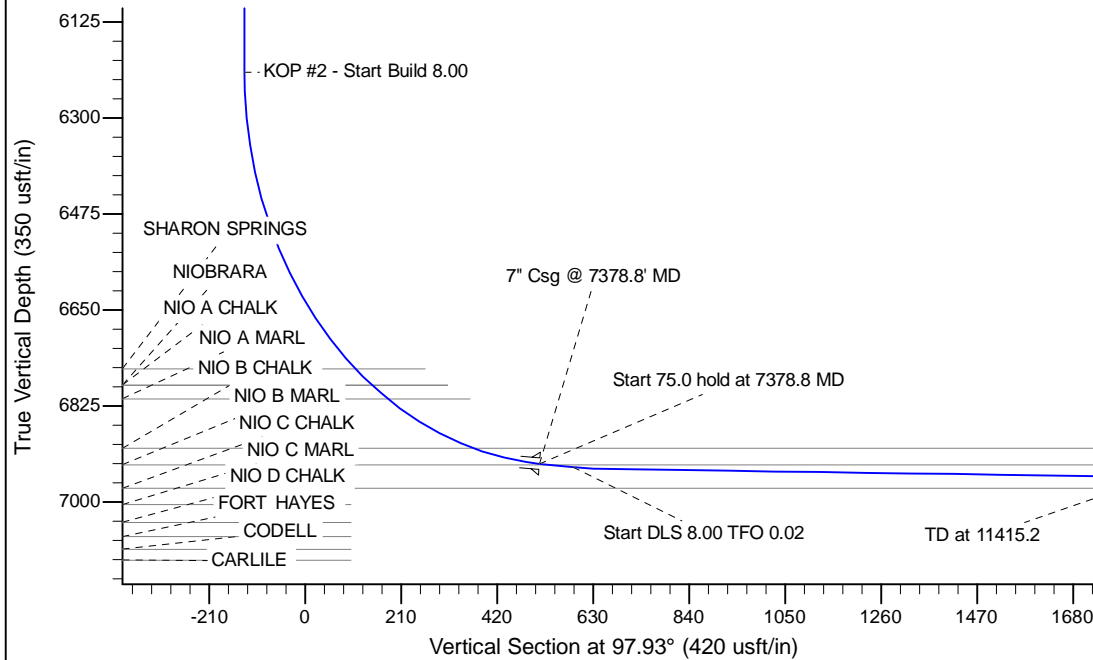
Project: Wattenberg Field
Site: I (Sec.28-T06N-R66W) Weld County, CO
Well: Feuerstein I28-63-1HN
Wellbore: Original Drilling
Design: APD - Rev 0

Northern Region Drilling

Geodetic System: US State Plane 1983
Datum: North American Datum 1983
Ellipsoid: GRS 1980
Zone: Colorado Northern Zone
System Datum: Mean Sea Level

SECTION DETAILS

Sec	MD	Inc	Azi	TVD	+N/-S	+E/-W	Dleg	TFace	VSect	Target
1	0.0	0.00	0.00	0.0	0.0	0.0	0.00	0.00	0.0	
2	1200.0	0.00	0.00	1200.0	0.0	0.0	0.00	0.00	0.0	
3	1839.4	15.99	197.89	1831.2	-84.3	-27.2	2.50	197.89	-15.3	
4	3985.1	15.99	197.89	3893.8	-646.7	-208.8	0.00	0.00	-117.6	
5	4624.5	0.00	0.00	4525.0	-731.0	-236.0	2.50	180.00	-133.0	
6	6316.3	0.00	0.00	6216.8	-731.0	-236.0	0.00	0.00	-133.0	
7	7378.8	85.00	88.64	6930.3	-715.5	417.6	8.00	88.64	512.3	
8	7453.8	85.00	88.64	6936.8	-713.7	492.3	0.00	0.00	586.0	
9	7507.6	89.30	88.64	6939.5	-712.4	546.0	8.00	0.02	639.0	
10	11415.2	89.30	88.64	6986.9	-619.8	4452.3	0.00	0.00	4495.2	Feuerstein I28-63-1HN BHL 990'FSL, 535'FEL



WELL DETAILS: Feuerstein I28-63-1HN			
Ground Level:	4724.0	Latitude	40.456700
Northing	1410004.27	Easting	3197218.67
		Longitude	-104.791280
Plan: APD - Rev 0 (Feuerstein I28-63-1HN/Original Drilling)			
Created By:	Carrie Willers	Date:	17:55, November 15 2012
Checked:		Date:	
Reviewed:		Date:	
Approved:		Date:	