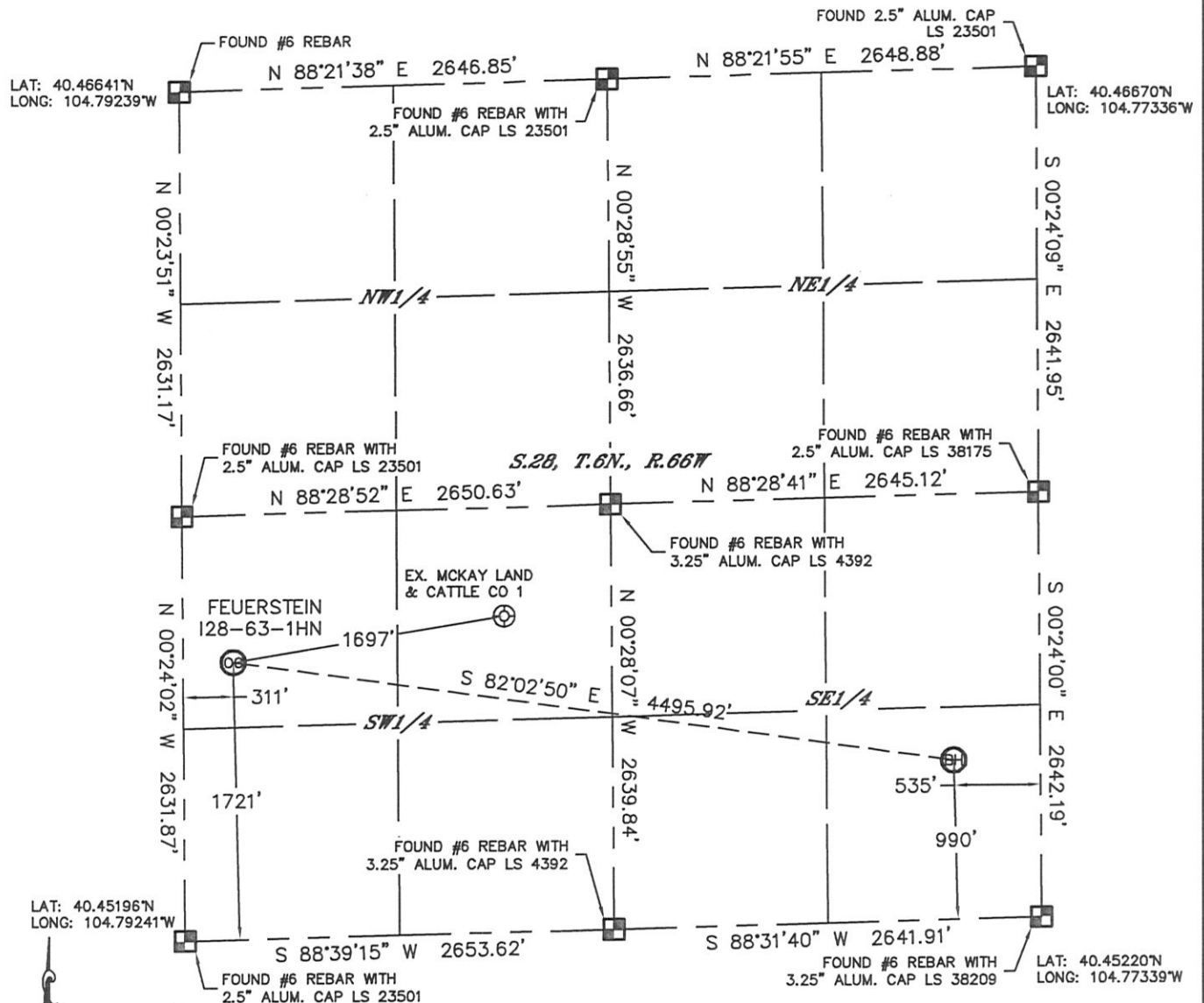


Lat40°, Inc. 1635 Foxtrail Drive, Suite 325 Loveland, CO 970-776-3321

WELL LOCATION CERTIFICATE

THIS MAP DOES NOT REPRESENT A BOUNDARY SURVEY

SECTION: 28
TOWNSHIP: 6N
RANGE: 66W



In accordance with a request from Jacob Rice with Noble Energy Inc., Lat40°, Inc. has determined the surface location of the FEUERSTEIN 128-63-1HN to be 1721' from the SOUTH line and 311' from the WEST line and the bottom hole to be 990' from the SOUTH line and 535' from the EAST line as measured at right angles from the section lines of Section 28, Township 6 North, Range 66 West of the Sixth Principal Meridian, County of Weld, State of Colorado.

I hereby state that this Well Location Certificate was prepared by me, or under my direct supervision, that the fieldwork was completed on 5/9/2012, for and on behalf of Noble Energy Inc. That this is not a Land Survey Plat or an Improvement Survey Plat, and that it is not to be relied upon for establishment of fence, building, or other future improvement lines.

NOTE:

- 1) Bearings shown are Grid Bearings of the Colorado State Plane Coordinate System, North Zone, North American Datum 1983/2007. The lineal dimensions as contained herein are based upon the "U.S. Survey Foot."
- 2) Ground elevations are based on an observed GPS elevation (NAVD 1988 DATUM).
- 3) NEAREST EXISTING WELL: MCKAY LAND & CATTLE CO 1, 1697'
- 4) IMPROVEMENTS: See LOCATION DRAWING for all visible improvements within 400' of disturbed area.
- 5) SURFACE USE: CROP LAND
- 6) INSTRUMENT OPERATOR: ADAM KELLY

NOTE

According to Colorado law, you must commence any legal action based upon any defect in this W.L.C. within three years after you discover such defect. In no event, may any action based upon any defect in this survey be commenced more than ten years after the date of the certificate shown hereon. (13-80-105 C.R.S.)

LEGEND

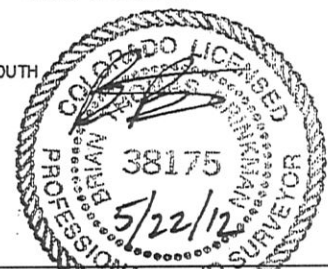
- = ALIQUOT MONUMENT AS DESCRIBED
○ = CALCULATED POSITION

SURFACE LOCATION

LAT: 40.45670°N
LONG: 104.79128°W
PDOP: 1.9
ELEV: 4724'
1/4, 1/4: NW1/4SW1/4
NEAREST PROPERTY LINE: 210' SOUTH

BOTTOM HOLE

LAT: 40.45490°N
LONG: 104.77530°W

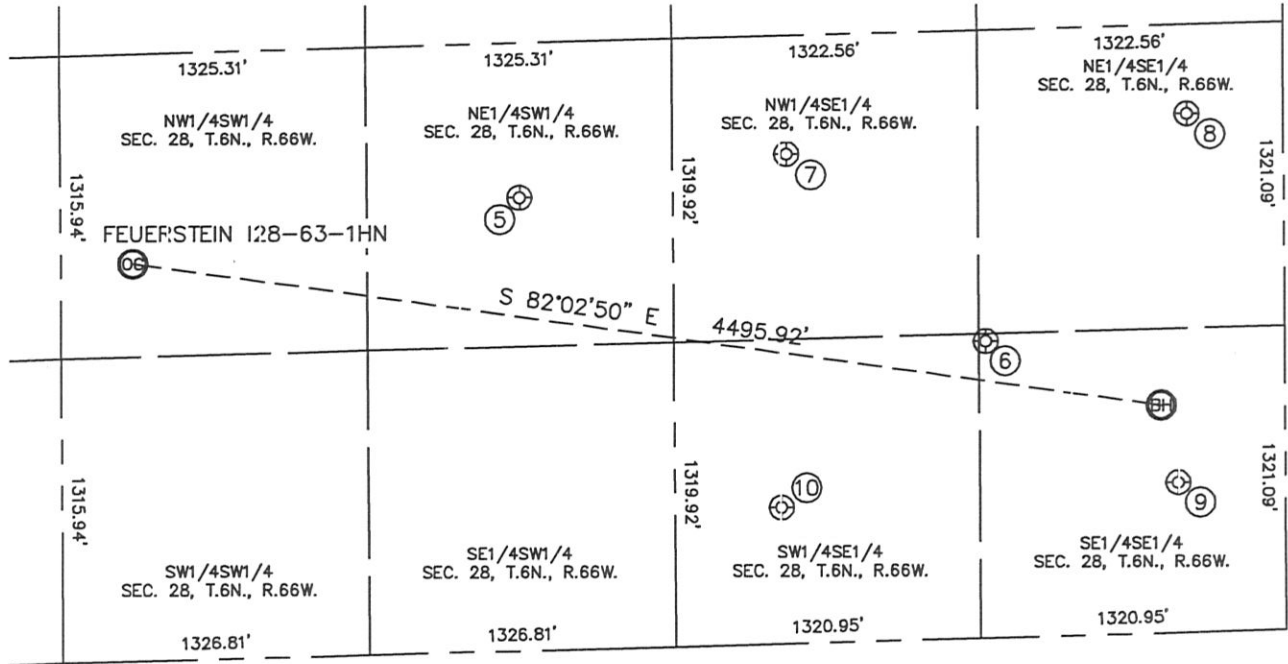


Brian T. Brinkman—On Behalf of Lat40°, Inc.
Colorado Licensed Professional Surveyor No. 38175
DATE: 5/22/2012
PROJECT#: 2012057

SITE SKETCH

FEUERSTEIN 128-63-1HN

SECTION: 28
TOWNSHIP: 6N
RANGE: 66W



⑤
MCKAY LAND &
CATTLE CO 1
NE1/4SW1/4
1965' FSL
1987' FWL
LAT-40.45744°N
LONG-104.78526°W
PDOP: 1.2
ELEV: 4721'

⑥
DOERING 1 28-23
SE1/4SE1/4
1288' FSL
1293' FEL
LAT-40.45568°N
LONG-104.77803°W
PDOP: 2.3
ELEV: 4716'

⑦
DOERING 28-10
NW1/4SE1/4
2125' FSL
2151' FEL
LAT-40.45793°N
LONG-104.78111°W
PDOP: 1.8
ELEV: 4717'

⑧
G W DOERING 2-28
NE1/4SE1/4
2253' FSL
417' FEL
LAT-40.45837°N
LONG-104.77488°W
PDOP: 1.6
ELEV: 4716'

⑨
DOERING 28-16
SE1/4SE1/4
652' FSL
463' FEL
LAT-40.45397°N
LONG-104.77505°W
PDOP: 1.8
ELEV: 4714'

⑩
GW DOERING 1-28
SW1/4SE1/4
591' FSL
2180' FEL
LAT-40.45372°N
LONG-104.78122°W
PDOP: 1.8
ELEV: 4713'

