

# LEGEND:

PROPOSED LOCATION

## GREAT WESTERN OIL & GAS COMPANY

LAND JG #31-35D, #31-36D, #31-24D, #31-20D, #31-13D, #31-17D,  
 #31-34D, #31-33D, #31-25D, #31-32D, #31-18D, #31-19D, & 31-12D  
 SECTION 31, T2N, R64W, 6th P.M.  
 SW 1/4 SW 1/4



Uintah Engineering & Land Surveying  
 85 South 200 East Vernal, Utah 84078  
 (435) 789-1017 \* FAX (435) 789-1813

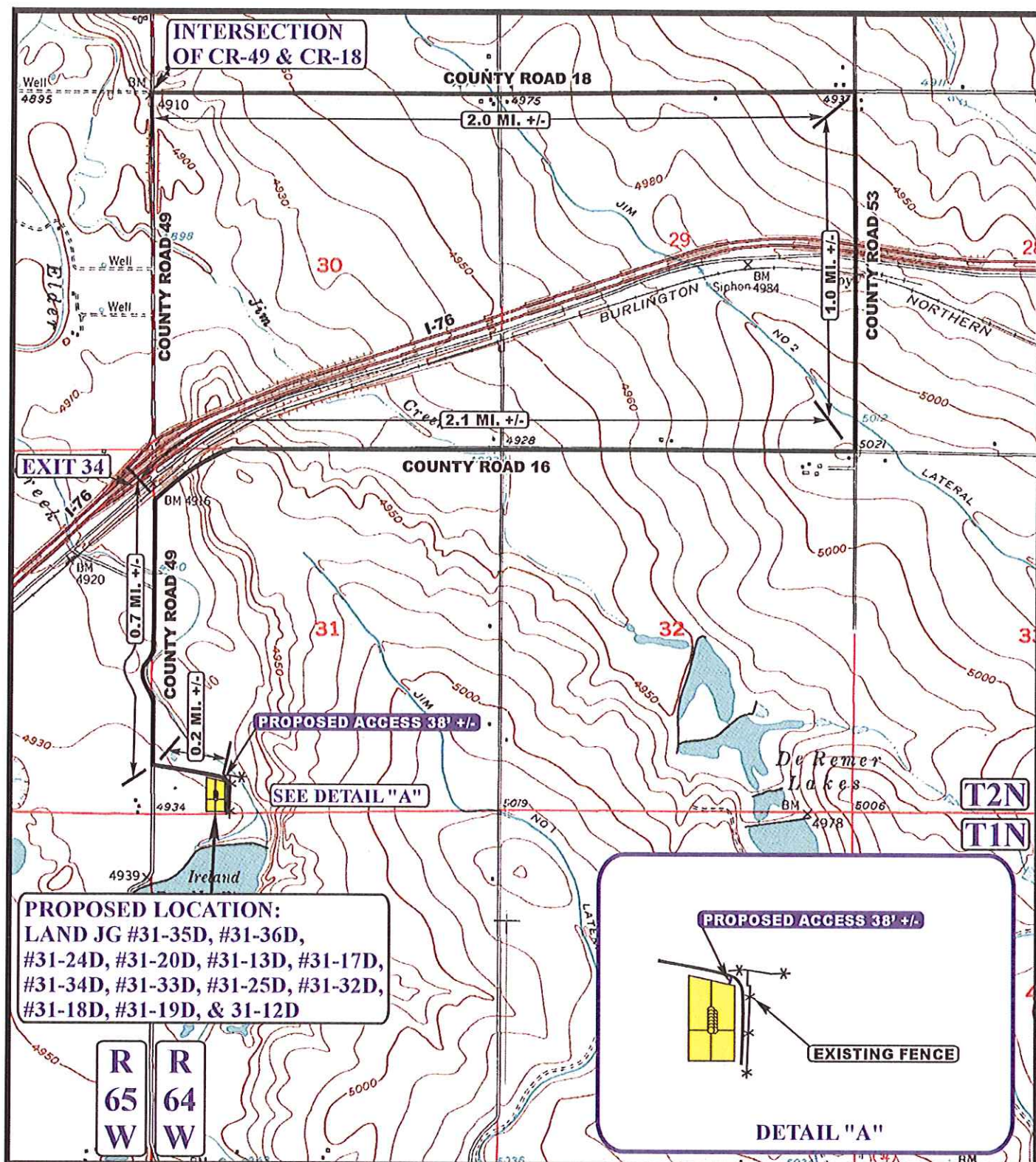
ACCESS ROAD  
 MAP

10 25 12  
 MONTH DAY YEAR



SCALE: 1:100,000 DRAWN BY: A.T. REV: 01-03-13 J.L.H.





# **LEGEND:**

- EXISTING ROAD
- PROPOSED ACCESS ROAD
- EXISTING FENCE

## **GREAT WESTERN OIL & GAS COMPANY**

LAND JG #31-35D, #31-36D, #31-24D, #31-20D, #31-13D, #31-17D,  
 #31-34D, #31-33D, #31-25D, #31-32D, #31-18D, #31-19D, & 31-12D  
 SECTION 31, T2N, R64W, 6th P.M.  
 SW 1/4 SW 1/4



**Utah Engineering & Land Surveying**  
 85 South 200 East Vernal, Utah 84078  
 (435) 789-1017 \* FAX (435) 789-1813

**ACCESS ROAD  
MAP**

**10 25 12**  
 MONTH DAY YEAR

**B  
TOPO**

SCALE: 1" = 2000' DRAWN BY: A.T. [REV: 01-03-13 J.L.H.]



GREAT WESTERN OIL & GAS COMPANY  
LAND JG #31-35D, #31-36D, #31-24D, #31-20D, #31-  
13D, #31-17D, #31-34D, #31-33D, #31-25D, #31-32D,  
#31-18D, #31-19D & #31-12D  
SECTION 31, T2N, R64W, 6<sup>th</sup> P.M.

PROCEED IN AN EASTERLY DIRECTION FROM THE INTERSECTION OF COUNTY ROAD 49 AND COUNTY ROAD 18, COLORADO APPROXIMATELY 2.0 MILES TO THE JUNCTION OF THIS ROAD AND COUNTY ROAD 53 TO THE SOUTH; TURN RIGHT AND PROCEED IN A SOUTHERLY DIRECTION APPROXIMATELY 1.0 MILES TO THE JUNCTION OF THIS ROAD AND COUNTY ROAD 16 TO THE WEST; TURN RIGHT AND PROCEED IN A WESTERLY, THEN SOUTHWESTERLY DIRECTION APPROXIMATELY 2.1 MILES TO THE JUNCTION OF THIS ROAD AND COUNTY ROAD 49 TO THE SOUTH; PROCEED IN A SOUTHERLY DIRECTION APPROXIMATELY 0.7 MILES TO THE JUNCTION OF THIS ROAD AND AN EXISTING ROAD TO THE SOUTHEAST; TURN LEFT AND PROCEED IN A SOUTHEASTERLY DIRECTION APPROXIMATELY 0.2 MILES TO THE BEGINNING OF THE PROPOSED ACCESS TO THE SOUTH; FOLLOW ROAD FLAGS IN A SOUTHERLY DIRECTION APPROXIMATELY 38' TO THE PROPOSED LOCATION.

TOTAL DISTANCE FROM THE INTERSECTION OF COUNTY ROAD 49 AND COUNTY ROAD 18, COLORADO TO THE PROPOSED LOCATION IS APPROXIMATELY 6.0 MILES.