

Downhole Schematic for DIANE 8-6-28



Project :DJ Basin

Area : Wattenberg

As Of : 07/23/2012

API # :05123356020000

County :

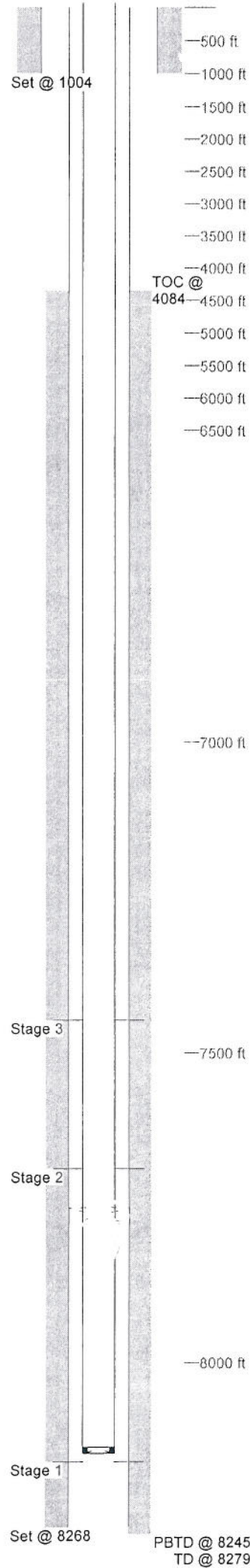
GL :           ft

Surface Location :

BHL :

KB to GL :       12.0 ft

KB :           ft



Casing Details								
Section Surface	Hole	Casing	Mass	Set At	Length	Thread	Grade	Description
	12.250		0	1,004	1	ST&C		Guide Shoe
		8.625	24	1,003	41	ST&C	J55	Shoe Jt,Baffle
		8.625	24	962	950	ST&C	J55	Csg
		8.625	24	12	12	ST&C		Landing Joint
Production	7.875		0	8,268	1	LT&C		Guide Shoe
		4.5	11.6	8,267	21	LT&C	SB-80	Shoe Jt
			0	8,246	1	LT&C		Float Collar
		4.5	11.5	8,245	863	LT&C	SB-80	Casing
		4.5	11.5	7,381	21	LT&C	SB-80	Marker Joint
		4.5	11.5	7,360	7,348	LT&C	SB-80	Casing
		4.5	11.5	12	12	LT&C	SB-80	Landing Jt
Cement Details								
Section Surface	Sequence	Lead	Top	Density	Blend / Additives			
			0	14.5	TYPE III Cmt Class C / + .08 lbs/sk Static Free + 1.5% Calcium Chloride + .15 lbs/sk Cello Flake + 60.5% Fresh Water.			
Production			0	0.0	/			
	Lead		4,350	12.5	Premium Lite Cement / + 0.25 lbs/sack Cello Flake +0.7% FL-52 + 6% Bentonite + 0.2% CD-32 + 3 lbs/sack CSE-2 + 0.2% ASA-301 @ 12.5 PPG			
	Tail		6,900	13.5	(50:50) Poz G Cement / + 0.25 lbs/sack Cello Flake + 0.6% FL-52 + 3% Bentonite + 0.1% SMS + 20% S-8 @ 13.5 PPG			
Tubing and Downhole Equipment								
O.D.	Length	Depth	Description					
0.000	10.00	10.00	KB					
2.375	8,127.94	8,137.94	249 Jts New 2 3/8 J55					
2.375	1.10	8,139.04	2 3/8 S/N					
2.375	10.00	8,149.04	10' sub 2 3/8 J55					
0.000	0.95	8,149.99	Pump off bit sub					
Perforations								
Stage 1	Date	From	To	Shots	Stage 3	06/28/2012	7,687	7,701 42
	06/27/2012	8,162	8,187	50		Date	From	To Shots
Stage 2	Date	From	To	Shots		06/28/2012	7,447	7,459 48
Frac Summary								
Stage 1 : 8,162 - 8,187, 50 - 0.420" shots, 3820 bbls of Slickwater, 250020 lbs of 20/40 Sand Report Date: 06/28/2012								
Stage 2 : 7,687 - 7,701, 42 - 0.420" shots, 2737 bbls of Slickwater, 250220 lbs of 20/40 Sand Report Date: 06/28/2012								
Stage 3 : 7,447 - 7,459, 48 - 0.420" shots, 3170 bbls of Slickwater, 250620 lbs of 20/40 Sand Report Date: 06/29/2012								
Bridge Plug Details								
Depth	Date Set	Plug Type	Sacks Cement					
7,750.0	06/28/2012	CBP	0					