

Downhole Schematic for DIANE 6-4-28



Project :DJ Basin

Area : Wattenberg

As Of : 07/19/2012

API # :05123356010000

County :

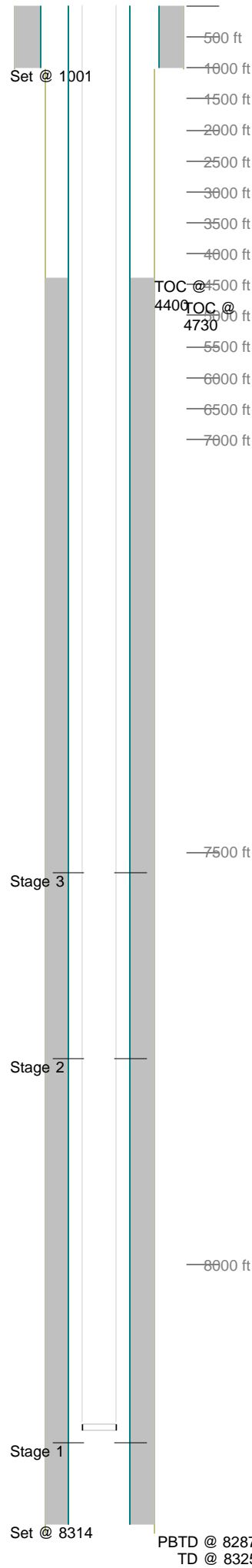
GL :ft

Surface Location :

BHL :

KB to GL :12.0 ft

KB :ft



Casing Details								
Section	Hole	Casing	Mass	Set At	Length	Thread	Grade	Description
Surface	12.250		0	1,001	1	ST&C		Guide Shoe
		8.625	24	1,000	41	ST&C	J55	Shoe Jt,Baffle
		8.625	24	959	946	ST&C	J55	Csg
		8.625	24	12	12	ST&C		Landing Joint
Production	7.875		0	8,314	1	LT&C		Guide Shoe
		4.5	11.6	8,313	21	LT&C	SB-80	Shoe Jt
			0	8,292	1	LT&C		Float Collar
		4.5	11.5	8,291	906	LT&C	SB-80	Casing
		4.5	11.5	7,385	21	LT&C	SB-80	Marker Joint
		4.5	11.5	7,364	7,352	LT&C	SB-80	Casing
		4.5	11.5	12	12	LT&C	SB-80	Landing Jt
Cement Details								
Section	Sequence	Top	Density	Blend / Additives				
Surface	Lead	0	14.5	TYPE III Cmt Class C / + .08 lbs/sk Static Free + 1.5% Calcium Chloride + .15 lbs/sk Cello Flake + 60.5% Fresh Water.				
Production		0	0.0	/				
	Lead	4,400	12.5	Premium Lite Cement / + 0.25 lbs/sack Cello Flake +0.7% FL-52 + 6% Bentonite + 0.2% CD-32 + 3 lbs/sack CSE-2 + 0.2% ASA-301 @ 12.5 PPG				
	Tail	6,950	13.5	(50:50) Poz G Cement / + 0.25 lbs/sack Cello Flake + 0.6% FL-52 + 3% Bentonite + 0.1% SMS + 20% S-8 @ 13.5 PPG				
Tubing and Downhole Equipment								
O.D.	Length	Depth	Description					
0.000	10.00	10.00	KB					
2.375	8,180.87	8,191.89	249 jts. 2 3/8 New J55 4.7 lb.					
2.375	10.00	8,202.99	10' 2 3/8 tbg. sub New					
0.000	1.60	8,204.59	1/2 of Pump off bit sub					
2.375	1.10	9,192.99	2 3/8 S/N					
Perforations								
Stage 1						06/28/2012	7,750	7,764 42
	Date	From	To	Shots	Stage 3	Date	From	To Shots
		8,215	8,240	50				
Stage 2						06/29/2012	7,524	7,536 48
	Date	From	To	Shots				
Frac Summary								
Stage 1 : 8,215 - 8,240, 50 - 0.420" shots, 3856 bbls of Slickwater, 251080 lbs of 20/40 Sand Report Date: 06/28/2012								
Stage 2 : 7,750 - 7,764, 42 - 0.420" shots, 2751 bbls of Slickwater, 250500 lbs of 20/40 Sand Report Date: 06/28/2012								
Stage 3 : 7,524 - 7,536, 48 - 0.420" shots, 3264 bbls of Slickwater, 250920 lbs of 20/40 Sand Report Date: 06/29/2012								