

WPX Energy Rocky Mtn LLC

FINAL

RWF 22-34

API #05-045-19836-00

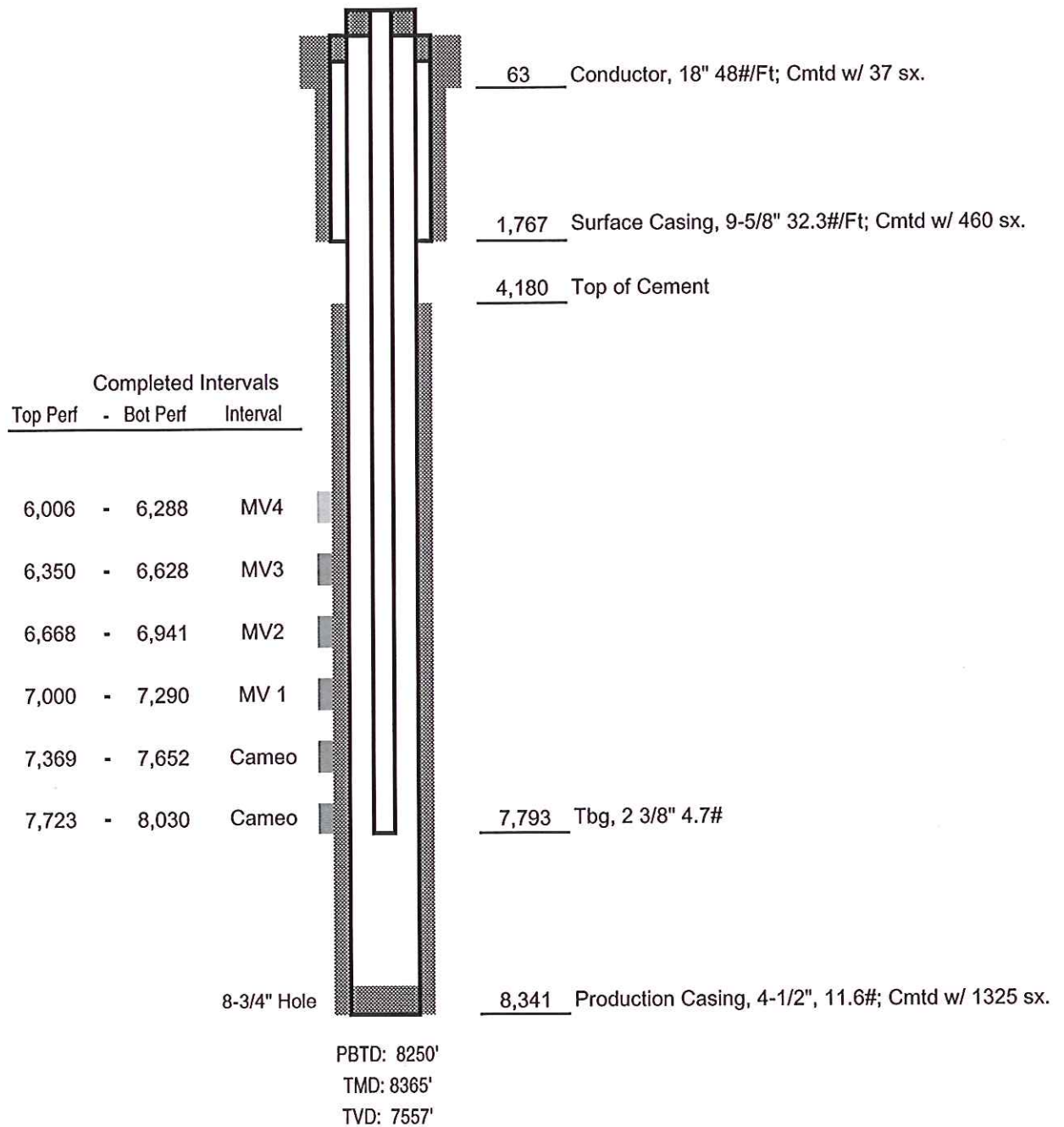
419' FSL x 2192' FEL - SHL

(SWSE) Sec. 27-T6S-R94W

1475' FNL x 1263' FWL - BHL

(SEnw) Sec. 34-T6S-T94W

Garfield County, Colorado



Not to Scale