

The Road to Excellence Starts with Safety

Sold To #: 300721	Ship To #: 2885808	Quote #:	Sales Order #: 9537395
Customer: WPX ENERGY ROCKY MOUNTAIN LLC-EBUS	Customer Rep: Towers, Ron		
Well Name: RWF	Well #: 22-34	API/UWI #: 05-045-19836	
Field: RULISON	City (SAP): RIFLE	County/Parish: Garfield	State: Colorado
Lat: N 39.49 deg. OR N 39 deg. 29 min. 24.472 secs.	Long: W 107.973 deg. OR W -108 deg. 1 min. 38.809 secs.		
Contractor: NABORS 577	Rig/Platform Name/Num: NABORS 577		
Job Purpose: Cement Surface Casing			
Well Type: Development Well	Job Type: Cement Surface Casing		
Sales Person: MAYO, MARK	Srv Supervisor: YOUNG, JEREMY	MBU ID Emp #: 418013	

Job Personnel

HES Emp Name	Exp Hrs	Emp #	HES Emp Name	Exp Hrs	Emp #	HES Emp Name	Exp Hrs	Emp #
BRENNECKE, ANDREW Bailey	8.5	486345	DEUSSEN, EDWARD Eric	8.5	485182	VANALSTYNE, TROY L	8.5	420256
YOUNG, JEREMY R	8.5	418013						

Equipment

HES Unit #	Distance-1 way	HES Unit #	Distance-1 way	HES Unit #	Distance-1 way	HES Unit #	Distance-1 way
10025118	60 mile	10867322	60 mile	10871245	60 mile	10998512	60 mile
11259885	60 mile	11360881	60 mile	11808831	60 mile		

Job Hours

Date	On Location Hours	Operating Hours	Date	On Location Hours	Operating Hours	Date	On Location Hours	Operating Hours
6/9/2012	8.5	3						

TOTAL Total is the sum of each column separately

Job

Formation Name	Formation Depth (MD)	Top	Bottom	Form Type	Job depth MD	Job Depth TVD	Water Depth	Perforation Depth (MD)	From	To
				BHST	1767. ft	1767. ft				
						4. ft				

Well Data

Description	New / Used	Max pressure psig	Size in	ID in	Weight lbm/ft	Thread	Grade	Top MD ft	Bottom MD ft	Top TVD ft	Bottom TVD ft
13 1/2" OPEN HOLE				13.5				.	1780.		
9 5/8" SURFACE CASING	Unknown		9.625	9.001	32.3		H-40	.	1767.		

Sales/Rental/3rd Party (HES)

Description	Qty	Qty uom	Depth	Supplier
PLUG,CMTG,TOP,9 5/8,HWE,8.16 MIN/9.06 MA	1	EA		

Tools and Accessories

Type	Size	Qty	Make	Depth	Type	Size	Qty	Make	Depth	Type	Size	Qty	Make
Guide Shoe					Packer					Top Plug	9.625	1	HES
Float Shoe					Bridge Plug					Bottom Plug			
Float Collar					Retainer					SSR plug set			
Insert Float										Plug Container	9.625	1	HES
Stage Tool										Centralizers			

Miscellaneous Materials

Gelling Agt	Conc	Surfactant	Conc	Acid Type	Qty	Conc	%
Treatment Fld	Conc	Inhibitor	Conc	Sand Type	Size	Qty	

Fluid Data

Stage/Plug #: 1

HALLIBURTON***Cementing Job Summary***

Fluid #	Stage Type	Fluid Name	Qty	Qty uom	Mixing Density lbm/gal	Yield ft ³ /sk	Mix Fluid Gal/sk	Rate bbl/min	Total Mix Fluid Gal/sk
1	Fresh Water	FRESH WATER	20.00	bbl	8.33	.0	.0	4	
2	VersaCem Lead	VERSACEM (TM) SYSTEM (452010)	300.0	sacks	12.3	2.38	13.75	8	13.75
	13.75 Gal	FRESH WATER							
3	VersaCem Tail	VERSACEM (TM) SYSTEM (452010)	160.0	sacks	12.8	2.11	11.75	8	11.75
	11.75 Gal	FRESH WATER							
4	Displacement Fluid	FRESH WATER	136.00	bbl	8.34	.0	.0	10	
Calculated Values		Pressures		Volumes					
Displacement	136	Shut In: Instant		Lost Returns	NO	Cement Slurry	187.3	Pad	
Top Of Cement	SURFACE	5 Min		Cement Returns	32	Actual Displacement	136	Treatment	
Frac Gradient		15 Min		Spacers	20	Load and Breakdown		Total Job	343.3
Rates									
Circulating		Mixing	8	Displacement	10	Avg. Job	9		
Cement Left In Pipe	Amount	39 ft	Reason	Shoe Joint					
Frac Ring # 1 @	ID	Frac ring # 2 @	ID	Frac Ring # 3 @	ID	Frac Ring # 4 @	ID		
The Information Stated Herein Is Correct				Customer Representative Signature					

The Road to Excellence Starts with Safety

Sold To #: 300721	Ship To #: 2885808	Quote #:	Sales Order #: 9537395
Customer: WPX ENERGY ROCKY MOUNTAIN LLC-EBUS	Customer Rep: Towers, Ron		
Well Name: RWF	Well #: 22-34	API/UWI #: 05-045-19836	
Field: RULISON	City (SAP): RIFLE	County/Parish: Garfield	State: Colorado
Legal Description:			
Lat: N 39.49 deg. OR N 39 deg. 29 min. 24.472 secs.		Long: W 107.973 deg. OR W -108 deg. 1 min. 38.809 secs.	
Contractor: NABORS 577	Rig/Platform Name/Num: NABORS 577		
Job Purpose: Cement Surface Casing	Ticket Amount:		
Well Type: Development Well	Job Type: Cement Surface Casing		
Sales Person: MAYO, MARK	Srv Supervisor: YOUNG, JEREMY	MBU ID Emp #: 418013	

Activity Description	Date/Time	Cht #	Rate bbl/ min	Volume bbl		Pressure psig		Comments
				Stage	Total	Tubing	Casing	
Call Out	06/09/2012 11:30							
Pre-Convoy Safety Meeting	06/09/2012 13:50							WITH ALL HES PERSONNEL
Crew Leave Yard	06/09/2012 14:00							
Arrive At Loc	06/09/2012 15:30							RIG WAS RIGGING UP TO RUN CASING UPON HES ARRIVAL
Assessment Of Location Safety Meeting	06/09/2012 19:40							WITH ALL HES PERSONNEL
Other	06/09/2012 19:50							SPOT EQUIPMENT
Pre-Rig Up Safety Meeting	06/09/2012 20:00							WITH ALL HES PERSONNEL
Rig-Up Equipment	06/09/2012 20:10							
Pre-Job Safety Meeting	06/09/2012 21:00							WITH ALL PERSONNEL ON LOCATION
Start Job	06/09/2012 21:12							TD 1780 FT, TP 1767 FT, SHOE 39 FT, HOLE 13 1/2 IN, MUD WT 10.3 PPG, CSG 9 5/8 IN 32.3 LB/FT H-40
Other	06/09/2012 21:13		2	2			87.0	FILL LINES WITH FRESH WATER
Test Lines	06/09/2012 21:14							TEST LINES TO 3400 PSI. PRESSURE HOLDING
Pump Spacer 1	06/09/2012 21:21		4	20			133.0	FRESH WATER
Pump Lead Cement	06/09/2012 21:30		8	127.2			400.0	300 SKS AT 12.3 PPG, 2.38 FT3/SK, 13.75 GAL/SK
Activity Description	Date/Time	Cht	Rate bbl/ min	Volume bbl		Pressure psig		Comments

Sold To #: 300721

Ship To #: 2885808

Quote #:

Sales Order #: 9537395

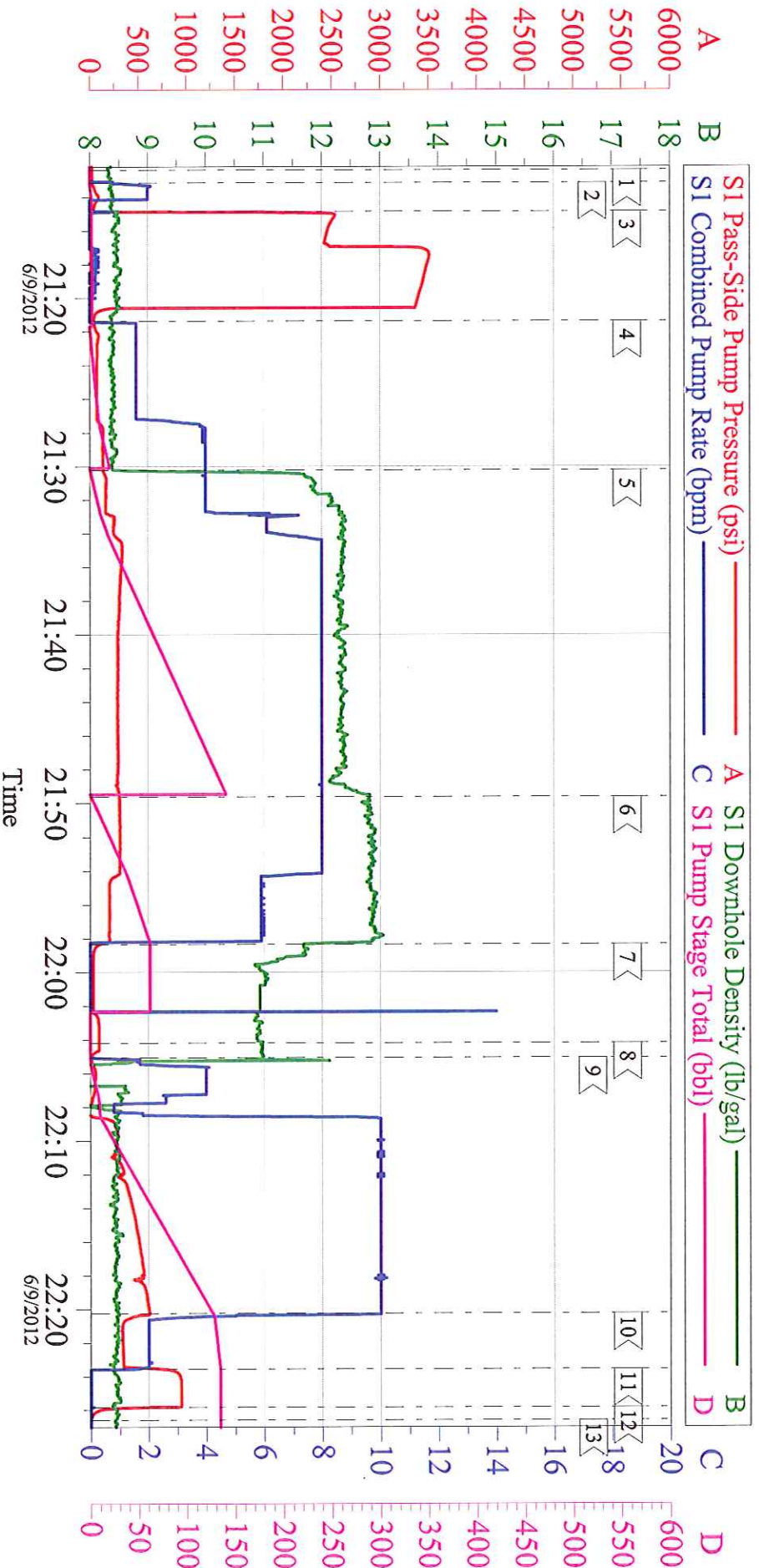
SUMMIT Version: 7.3.0030

Saturday, June 09, 2012 11:13:00

		#		Stage	Total	Tubing	Casing	
Pump Tail Cement	06/09/2012 21:49		8	60.1			300.0	160 SKS AT 12.8 PPG, 2.11 FT3/SK, 11.75 GAL/SK
Shutdown	06/09/2012 21:58							
Drop Top Plug	06/09/2012 22:04							PLUG LAUNCHED
Pump Displacement	06/09/2012 22:05		10	126			605.0	FRESH WATER
Slow Rate	06/09/2012 22:20		2	10			350.0	SLOW RATE 10 BBLS PRIOR TO CALCULATED DISPLACEMENT
Bump Plug	06/09/2012 22:23		2		136		930.0	PLUG BUMPED
Check Floats	06/09/2012 22:25							FLOATS HOLDING. RETURNED 0.5 BBL H2O TO PUMP
End Job	06/09/2012 22:26							PIPE WAS RECIPROCATED DURING JOB. GOOD CIRCULATION THROUGHOUT JOB. HES RETURNED 32 BBL CEMENT TO SURFACE
Pre-Rig Down Safety Meeting	06/09/2012 22:30							WITH ALL HES PERSONNEL
Rig-Down Equipment	06/09/2012 22:40							
Pre-Convoy Safety Meeting	06/09/2012 23:50							WITH ALL HES PERSONNEL
Crew Leave Location	06/10/2012 00:00							
Comment	06/10/2012 00:01							THANK YOU FOR USING HALLIBURTON CEMENT DEPARTMENT. JEREMY YOUNG AND CREW.

WPX - RWF 22-34

9 5/8 SURFACE



Local Event Log

1 <	START JOB	21:12:22	2 <	FILL LINES	21:13:08	3 <	TEST LINES	21:14:50
4 <	PUMP H2O SPACER	21:21:22	5 <	PUMP LEAD CEMENT	21:30:14	6 <	PUMP TAIL CEMENT	21:49:36
7 <	SHUTDOWN	21:58:20	8 <	DROP TOP PLUG	22:04:11	9 <	PUMP DISPLACEMENT	22:05:04
10 <	SLOW RATE	22:20:15	11 <	BUMP PLUG	22:23:33	12 <	CHECK FLOATS	22:25:50
13 <	END JOB	22:26:35						

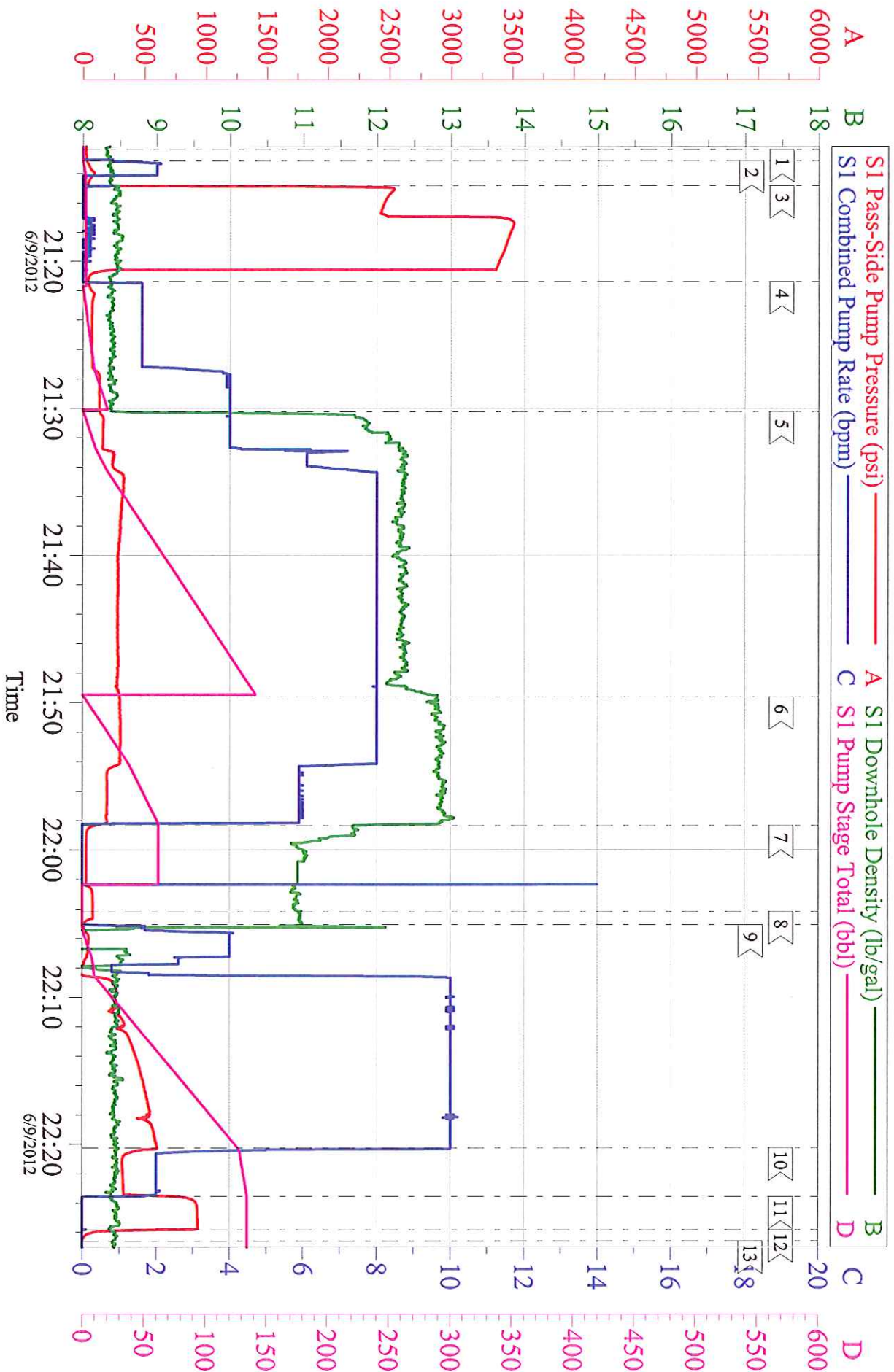
Customer: WPX
Well Description: RWF 22-34
Company Rep: RON TOWERS

Job Date: 09-Jun-2012
Job Type: SURFACE
Cement Supervisor: JEREMY YOUNG

Sales Order #: 9537395
ADC Used: YES
Elite #: ANDREW BRENNKE

WPX - RWF 22-34

9 5/8 SURFACE



Customer: WPX	Job Date: 09-Jun-2012	Sales Order #: 9537395
Well Description: RWF 22-34	Job Type: SURFACE	ADC Used: YES
Company Rep: RON TOWERS	Cement Supervisor: JEREMY YOUNG	Elite #: ANDREW BRENNHECKE