

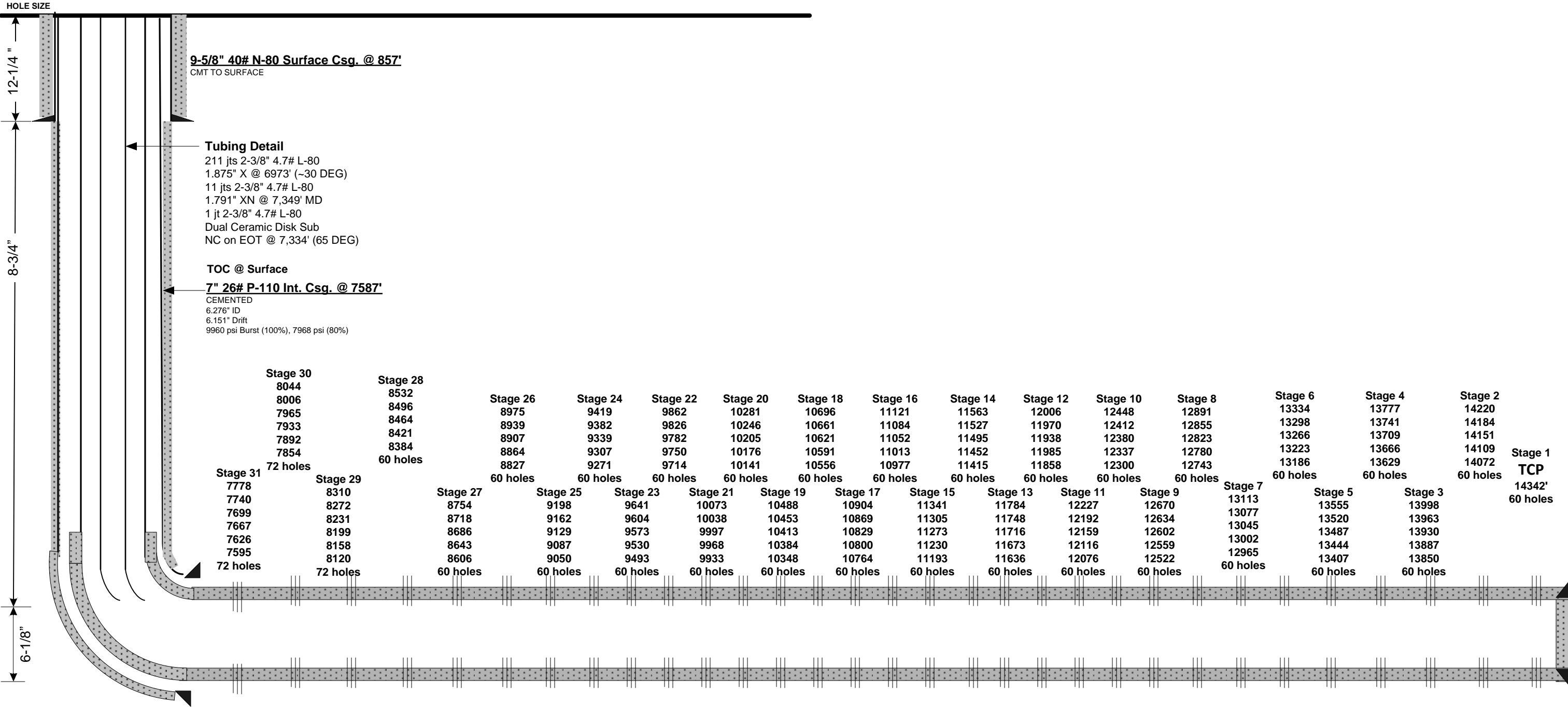
Current Wellbore Schematic
EnCana Oil & Gas (USA) Inc.



WELL : Davis 2A-9HX – Cemented Perf/Plug
LOCATION : Lat: 40.154441 Long: -104.789810
COUNTY : WELD STATE: CO
FIELD : Wattenberg - NIOBRARA
ELEVATION : 4882' (GL) 4895' (KB) Δ 13'

SPUD DATE: 4/22/12

API #: 05123352660000



Directional Data
KOP: 6675'
30°: 7000'
60°: 7275'
80°: 7460'
90°: 7625'
Max DLS: 14.6°/100' @ 7446' MD
Max TVD: 7188' TVD @ 9026' MD

4-1/2" 13.5# P-110 DQX Prod. Csg @ 14553'
CEMENTED
3.920" ID
3.795" Drift
12,410 psi Burst (100%), 9928 psi (80%)

TD: 14,566'
PBSD: 14,462'
TVD: ~7153'
BHT: 240 F

Lateral Length: 6979' (Int. Shoe-TD)