

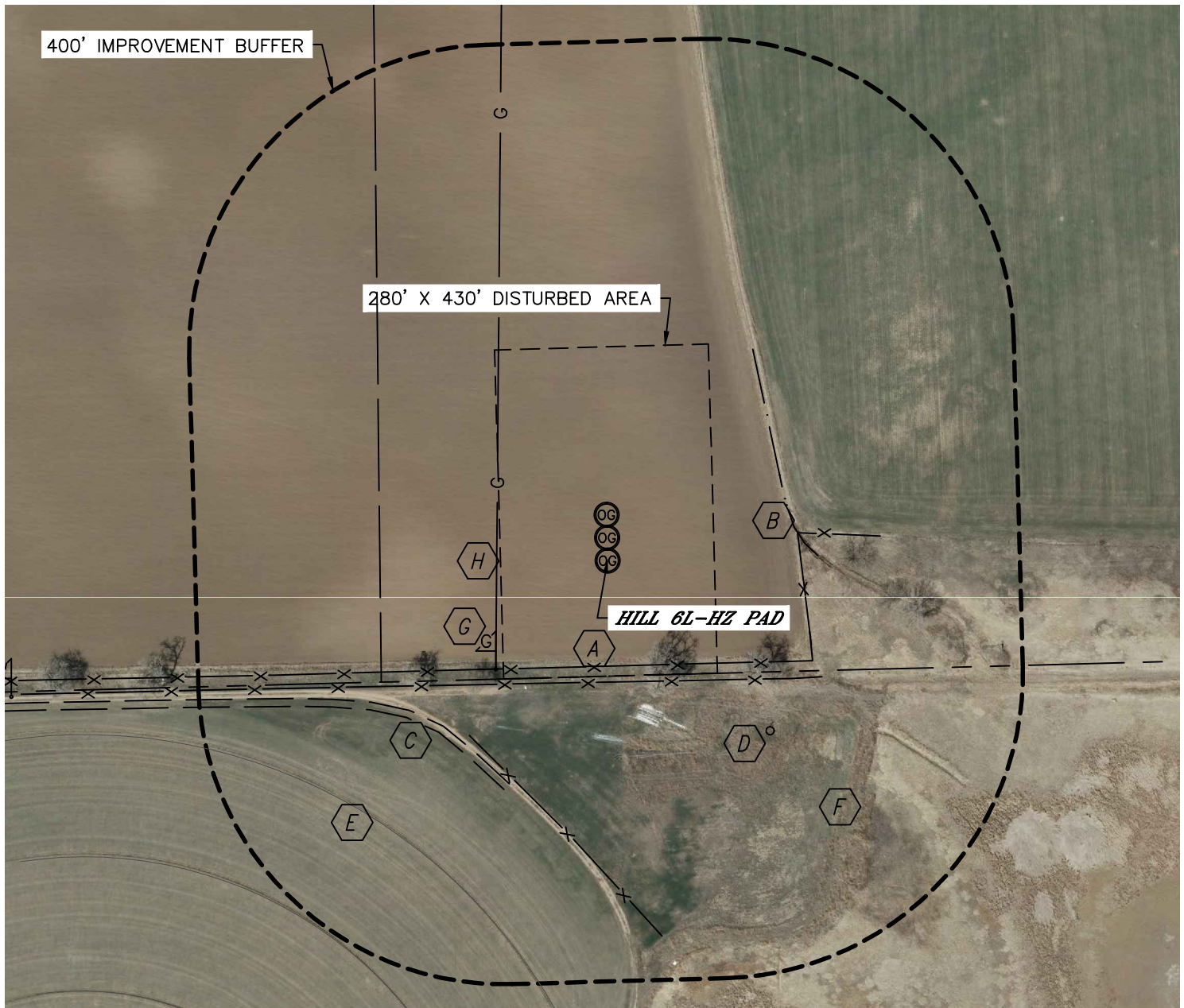


Lat40°, Inc. 1635 Foxtrail Drive, Suite 325 Loveland, CO 970-776-3321

## LOCATION DRAWING

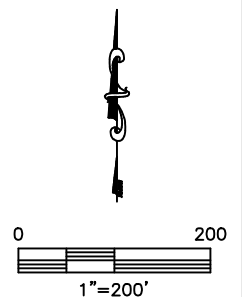
HILL 6L-HZ PAD

SECTION: 6  
TOWNSHIP: 6N  
RANGE: 67W



IMPROVEMENTS: (MEASURED FROM PROPOSED HILL 6Q-441 WELL)

- |  |                                  |
|--|----------------------------------|
| <b>A</b> FENCE 138' & 159' S, 251' NE, 292' SW | <b>E</b> PIVOT TRACK 452' SW     |
| <b>B</b> DITCH 246' NE                         | <b>F</b> POND 556' SE            |
| <b>C</b> FIELD ROAD 309' SW                    | <b>G</b> GAS MARKER 204' SW      |
| <b>D</b> CENTER PIVOT 308' SE                  | <b>H</b> APPROX. GAS LINE 140' W |



NEAREST: BUILDING 1228' NW, PUBLIC ROAD 1446' W (CR 13),  
ABOVE GROUND UTILITY 1284' NW, RAILROAD 1980' SW, PROPERTY LINE 151' S

DATE: rev 12/26/12  
PROJECT#: 2012066