

GREAT WESTERN OIL & GAS COMPANY

Campbell JF PAD 17-41D

LOCATED IN WELD COUNTY, COLORADO
SECTION 17, T2N, R65W, 6th P.M.

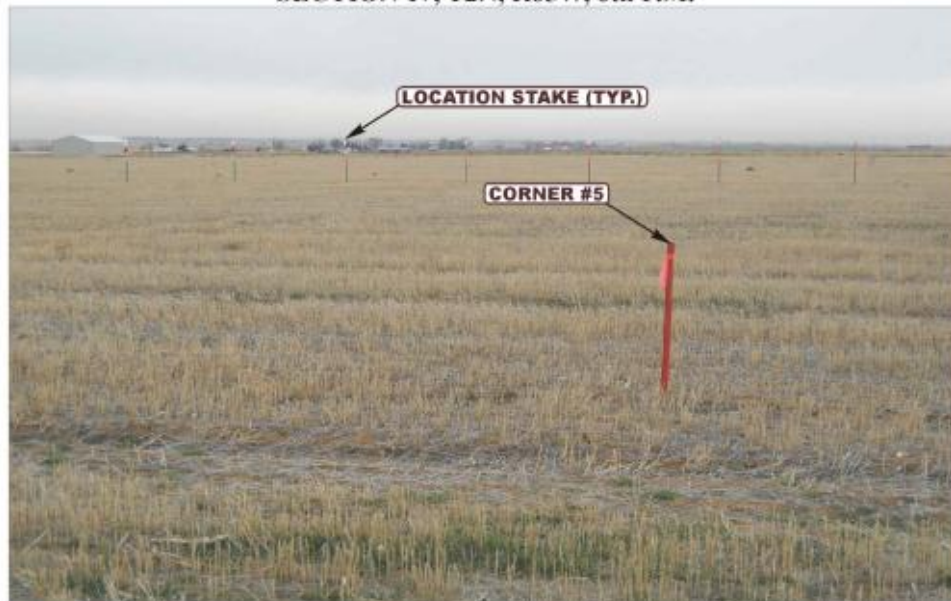


PHOTO: VIEW FROM CORNER #5 TO LOCATION STAKES

CAMERA ANGLE: SOUTHERLY



PHOTO: VIEW FROM BEGINNING OF PROPOSED ACCESS

CAMERA ANGLE: WESTERLY



- Since 1964 -

U
E
L**S** Uintah Engineering & Land Surveying
85 South 200 East Vernal, Utah 84078
(435) 789-1017 * FAX (435) 789-1813

LOCATION PHOTOS

10 01 12
MONTH DAY YEAR

PHOTO
P1

TAKEN BY: J.H.

DRAWN BY: M.M.

REV: 12-18-12 J.L.H.

GREAT WESTERN OIL & GAS COMPANY

Campbell JF PAD 17-41D

LOCATED IN WELD COUNTY, COLORADO
SECTION 17, T2N, R65W, 6th P.M.



PHOTO: VIEW OF LOCATION STAKES

CAMERA ANGLE: NORTHERLY



PHOTO: VIEW OF LOCATION STAKES

CAMERA ANGLE: EASTERLY



UELS

Uintah Engineering & Land Surveying
85 South 200 East Vernal, Utah 84078
(435) 789-1017 * FAX (435) 789-1813

LOCATION PHOTOS

10 | 01 | 12

MONTH | DAY | YEAR

PHOTO

P2

TAKEN BY: J.J.H.

DRAWN BY: M.M.L.

REV: 12-18-12 J.L.H.

GREAT WESTERN OIL & GAS COMPANY

Campbell JF PAD 17-41D

LOCATED IN WELD COUNTY, COLORADO
SECTION 17, T2N, R65W, 6th P.M.

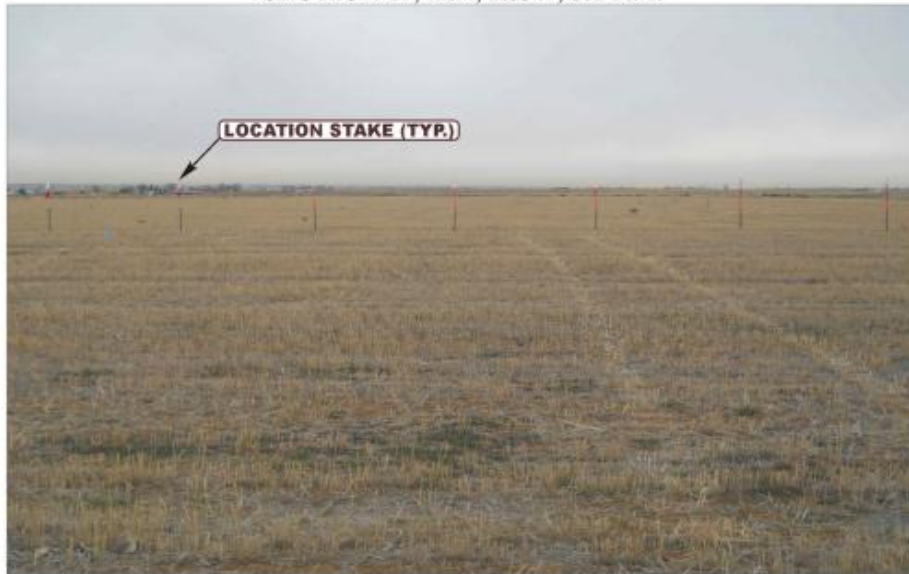


PHOTO: VIEW OF LOCATION STAKES

CAMERA ANGLE: SOUTHERLY



PHOTO: VIEW OF LOCATION STAKES

CAMERA ANGLE: WESTERLY



UELS Uintah Engineering & Land Surveying
85 South 200 East Vernal, Utah 84078
(435) 789-1017 * FAX (435) 789-1813

LOCATION PHOTOS

10 | 01 | 12
MONTH | DAY | YEAR

PHOTO
P3

TAKEN BY: J.H.

DRAWN BY: M.M.

REV: 12-18-12 J.L.H.