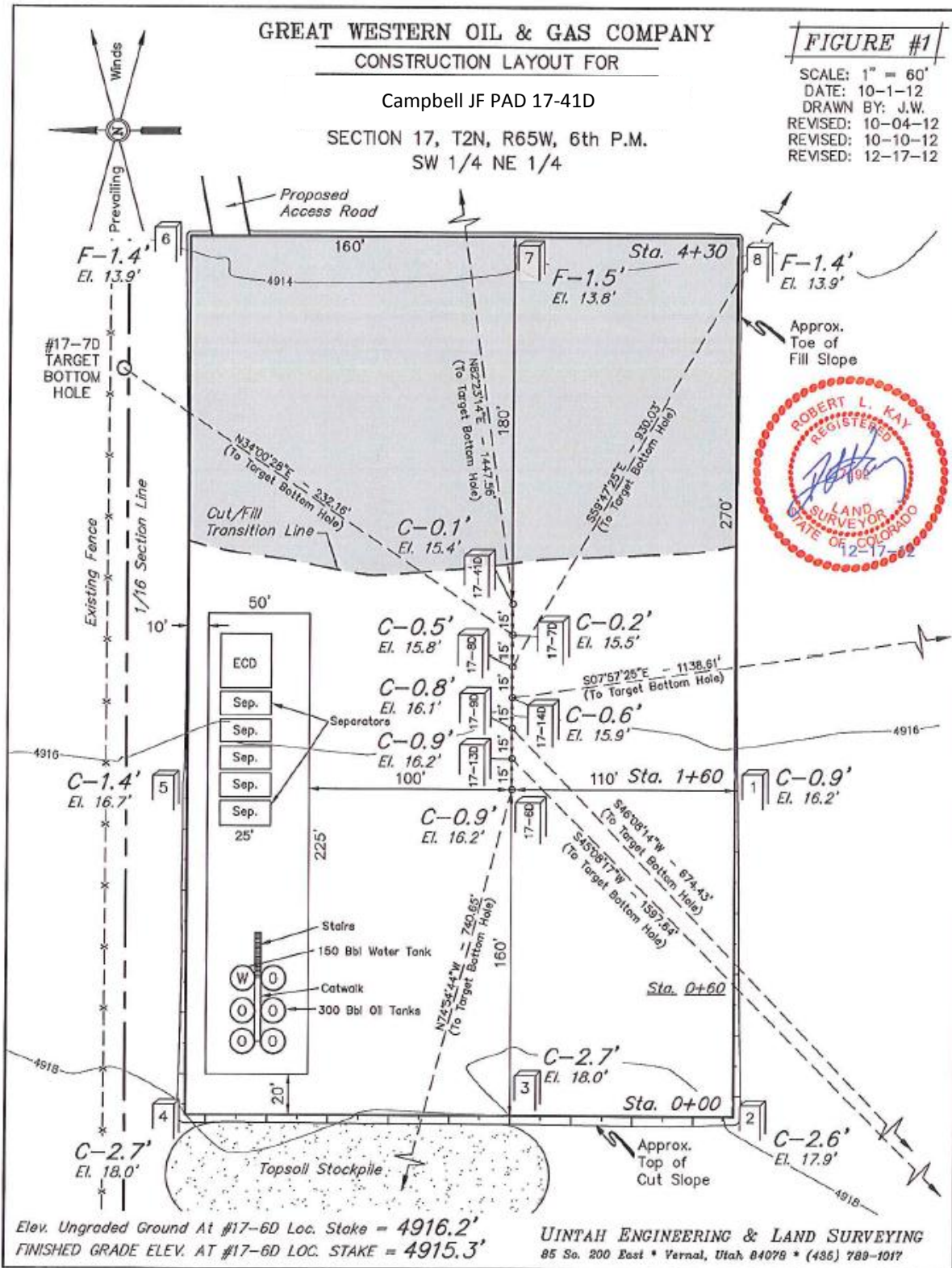


## FIGURE #1

SCALE: 1" = 60'  
DATE: 10-1-12  
DRAWN BY: J.W.  
REVISED: 10-04-12  
REVISED: 10-10-12  
REVISED: 12-17-12

Approx.  
Toe of  
Fill Slope



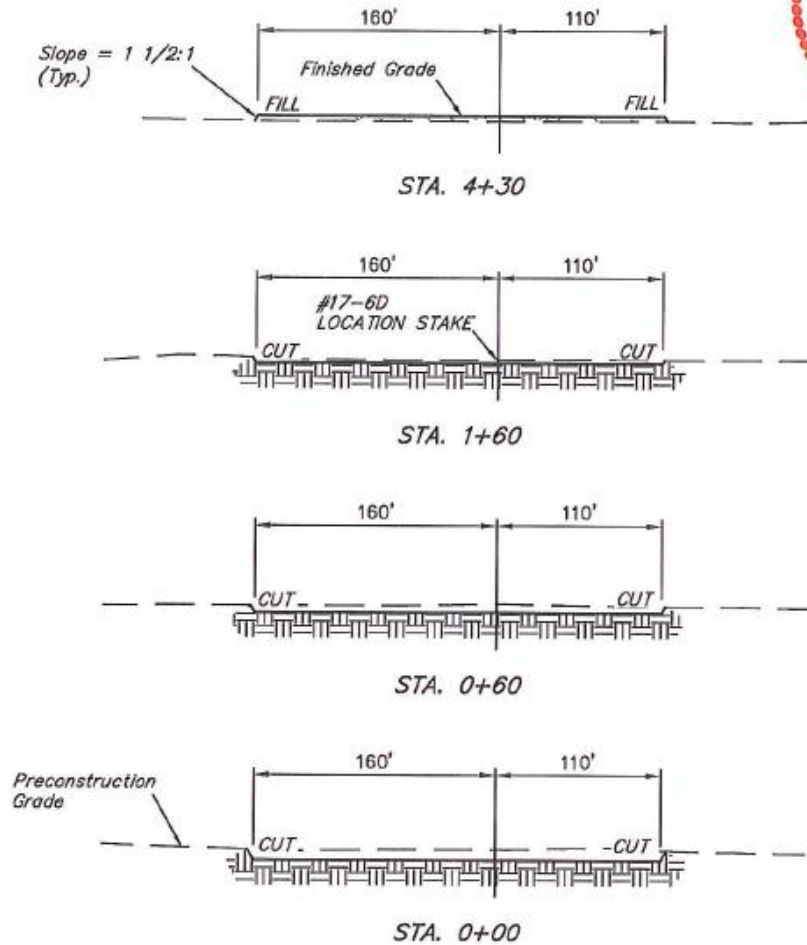
X-Section  
 Scale  
 1" = 40'  
 1" = 100'  
 DATE: 10-1-12  
 DRAWN BY: J.W.  
 REV: 10-04-12  
 REV: 12-17-12

# GREAT WESTERN OIL & GAS COMPANY CONSTRUCTION LAYOUT CROSS SECTIONS FOR

FIGURE #2

Campbell JF PAD 17-41D

SECTION 17, T2N, R65W, 6th P.M.  
 SW 1/4 NE 1/4



NOTE:  
 Topsoil should not be  
 Stripped Below Finished  
 Grade on Substructure Area.

APPROXIMATE ACREAGES  
 WELL SITE DISTURBANCE = ± 2.940 ACRES  
 ACCESS ROAD DISTURBANCE = ± 0.866 ACRES  
 TOTAL = ± 3.806 ACRES

\* NOTE:  
 FILL QUANTITY INCLUDES  
 5% FOR COMPACTION

## APPROXIMATE YARDAGES

(6") Topsoil Stripping = 2,210 Cu. Yds.  
 Remaining Location = 2,190 Cu. Yds.  
 TOTAL CUT = 4,400 CU. YDS.  
 FILL = 2,190 CU. YDS.

EXCESS MATERIAL = 2,210 Cu. Yds.  
 Topsoil = 2,210 Cu. Yds.  
 EXCESS UNBALANCE = 0 Cu. Yds.  
 (After Interim Rehabilitation)

UTAH ENGINEERING & LAND SURVEYING  
 85 So. 200 East • Vernal, Utah 84078 • (435) 789-1017

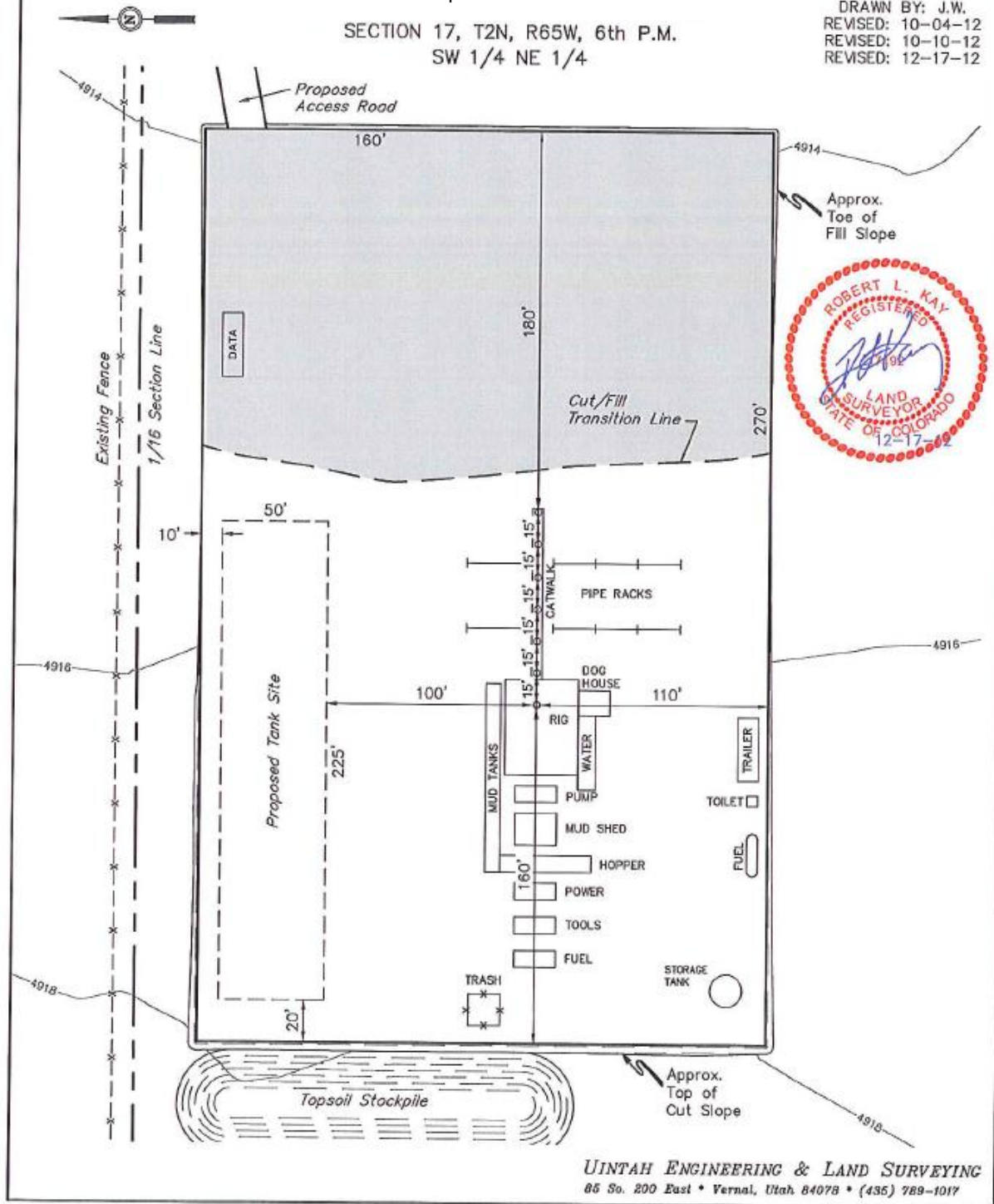
GREAT WESTERN OIL & GAS COMPANY  
TYPICAL RIG LAYOUT FOR

Campbell JF PAD 17-41D

SECTION 17, T2N, R65W, 6th P.M.  
SW 1/4 NE 1/4

FIGURE #3

SCALE: 1" = 60'  
DATE: 10-1-12  
DRAWN BY: J.W.  
REVISED: 10-04-12  
REVISED: 10-10-12  
REVISED: 12-17-12



UINTAH ENGINEERING & LAND SURVEYING  
85 So. 200 East • Vernal, Utah 84078 • (435) 789-1017