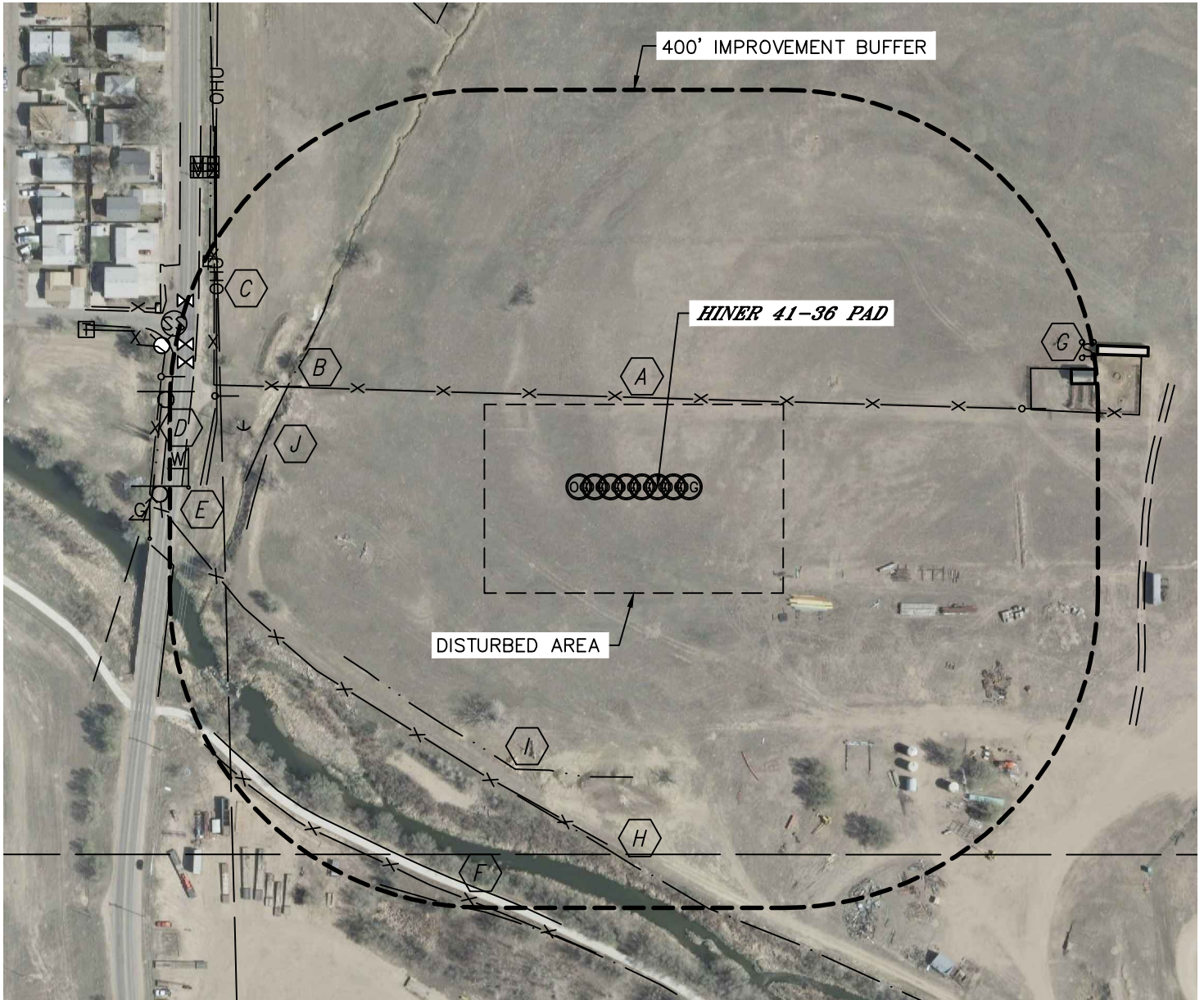




LOCATION DRAWING

HINER 41-36 PAD

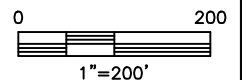
SECTION: 36
TOWNSHIP: 6N
RANGE: 66W



IMPROVEMENTS:

(MEASURED FROM THE PROPOSED HINER 41-36 WELL LOCATION)

- | | |
|---|---|
| A FENCE 113' N, 485' NE, 427' & 576' SW
571' & 641' W | F POUDBRE RIVER TRAIL 559' SW |
| B GAS LINE LOCATES 471' NW | G OUT-BUILDING 543' & 584' NE |
| C OVERHEAD UTILITY 567' W | H POUDBRE RIVER 431' SW |
| D N. 25TH AVE. 601' W | I LOW AREA 370' S, 582' SW |
| E WATER MARKER 596' W
WATER VALVE 621' & 627' NW | J DITCH 479', 642' & 652' NW, 638' W |



NEAREST: BUILDING 543' NE (OUT-BUILDING), PUBLIC ROAD 601' W (N.25TH AVE.), ABOVE GROUND UTILITY 567' W, RAILROAD 4000' SW, PROPERTY LINE 471' SW

DATE: 12/07/2012
PROJECT#: 2012168