

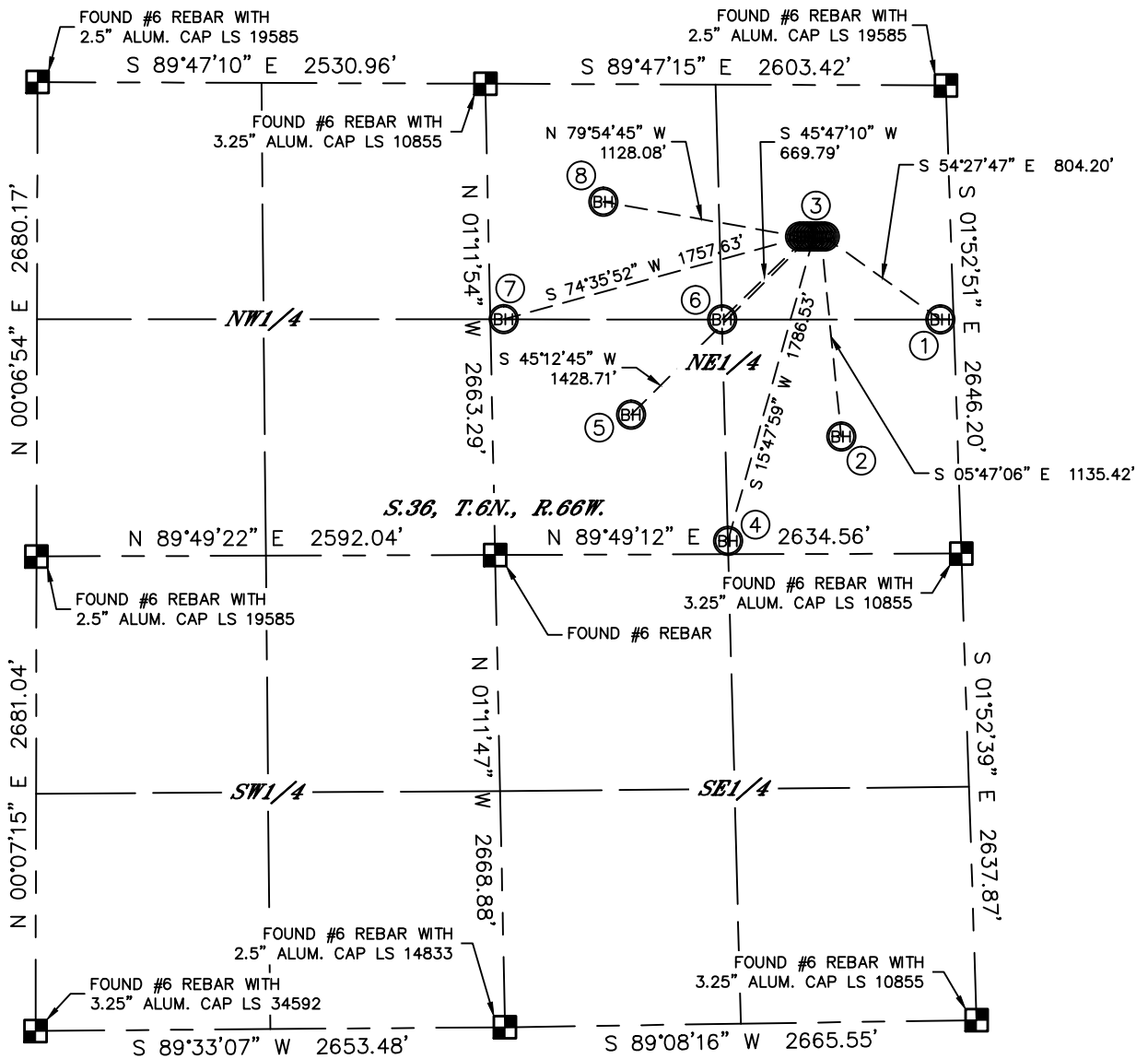


MULTI-WELL PLAN

HINER 41-36 PAD

THIS MAP DOES NOT REPRESENT A BOUNDARY SURVEY

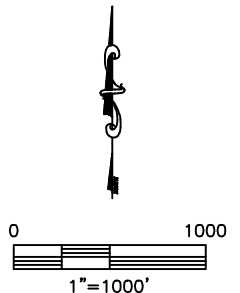
SECTION: 36
TOWNSHIP: 6N
RANGE: 66W



- | | | | |
|---|--|--|--|
| ①
-BOTTOM HOLE-
HINER 8-2-36
1322' FNL
75' FEL
LAT: 40.44834°N
LONG: 104.71645°W | ②
-BOTTOM HOLE-
HINER 42-36
1987' FNL
656' FEL
LAT: 40.44654°N
LONG: 104.71848°W | ③
-BOTTOM HOLE-
HINER 41-36
858' FNL
754' FEL
LAT: 40.44964°N
LONG: 104.71893°W | ④
-BOTTOM HOLE-
HINER 6-4-36
2578' FNL
1316' FEL
LAT: 40.44494°N
LONG: 104.72081°W |
| ⑤
-BOTTOM HOLE-
HINER 32-36
1868' FNL
1840' FEL
LAT: 40.44691°N
LONG: 104.72275°W | ⑥
-BOTTOM HOLE-
HINER 6-2-36
1327' FNL
1309' FEL
LAT: 40.44837°N
LONG: 104.72089°W | ⑦
-BOTTOM HOLE-
HINER 4-2-36
1331' FNL
2543' FEL
LAT: 40.44840°N
LONG: 104.72532°W | ⑧
-BOTTOM HOLE-
HINER 31-36
664' FNL
1957' FEL
LAT: 40.45021°N
LONG: 104.72327°W |

LEGEND

- = ALIQUOT MONUMENT AS DESCRIBED
- = CALCULATED POSITION



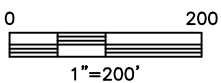
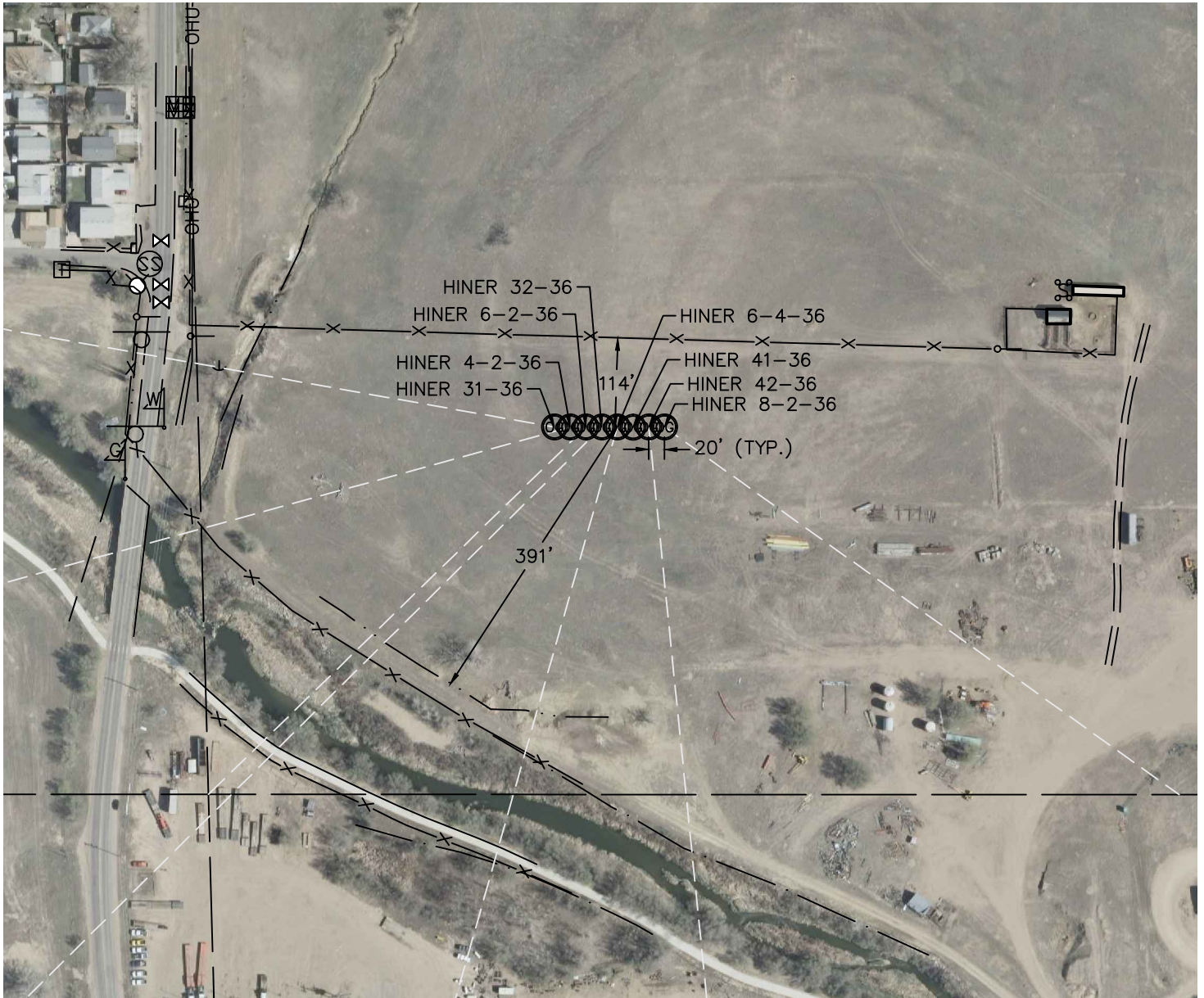


Lat40°, Inc. 1635 Foxtrail Drive, Suite 325 Loveland, CO 970-776-3321

MULTI-WELL PLAN

HINER 41-36 PAD

SECTION: 36
TOWNSHIP: 6N
RANGE: 66W



DATE: 12/07/2012
PROJECT#: 2012168