

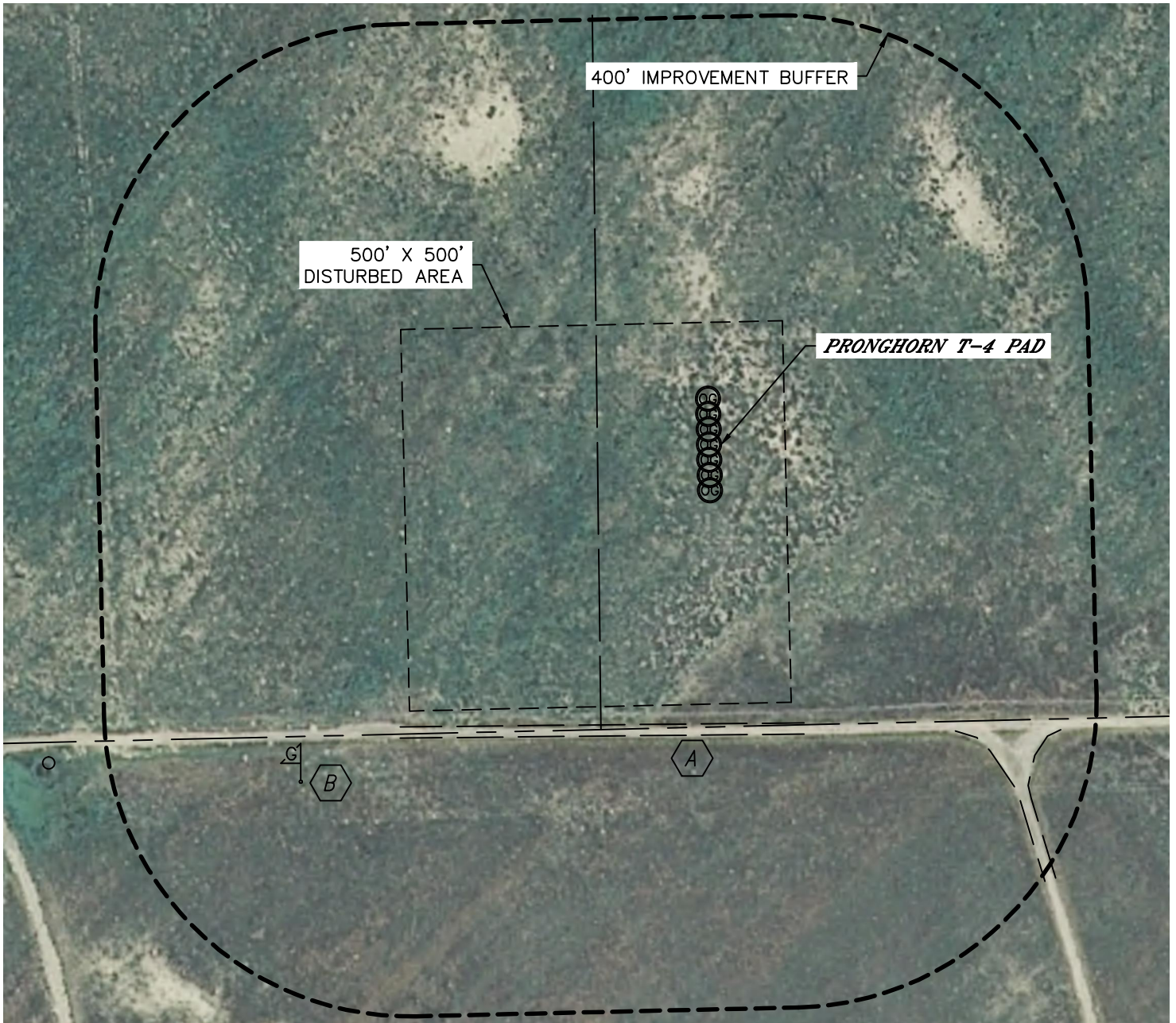


Lat40°, Inc. 1635 Foxtrail Drive, Suite 325 Loveland, CO 970-776-3321

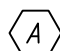
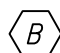
LOCATION DRAWING

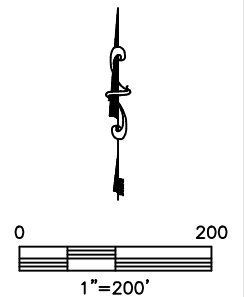
PRONGHORN T-4 PAD

SECTION: 4
TOWNSHIP: 5N
RANGE: 61W



IMPROVEMENTS:
(MEASURED FROM PROPOSED PRONGHORN T-P-4HZ WELL LOCATION)

-  ACCESS ROAD 386' S, 556' SE
-  GAS MARKER 705' SW



NEAREST: BUILDING 5280'+, PUBLIC ROAD 4102' W (CR 89),
ABOVE GROUND UTILITY 5280'+, RAILROAD 5280'+, PROPERTY LINE 390' S

DATE: rev.10/3/2012
PROJECT#: 2012073