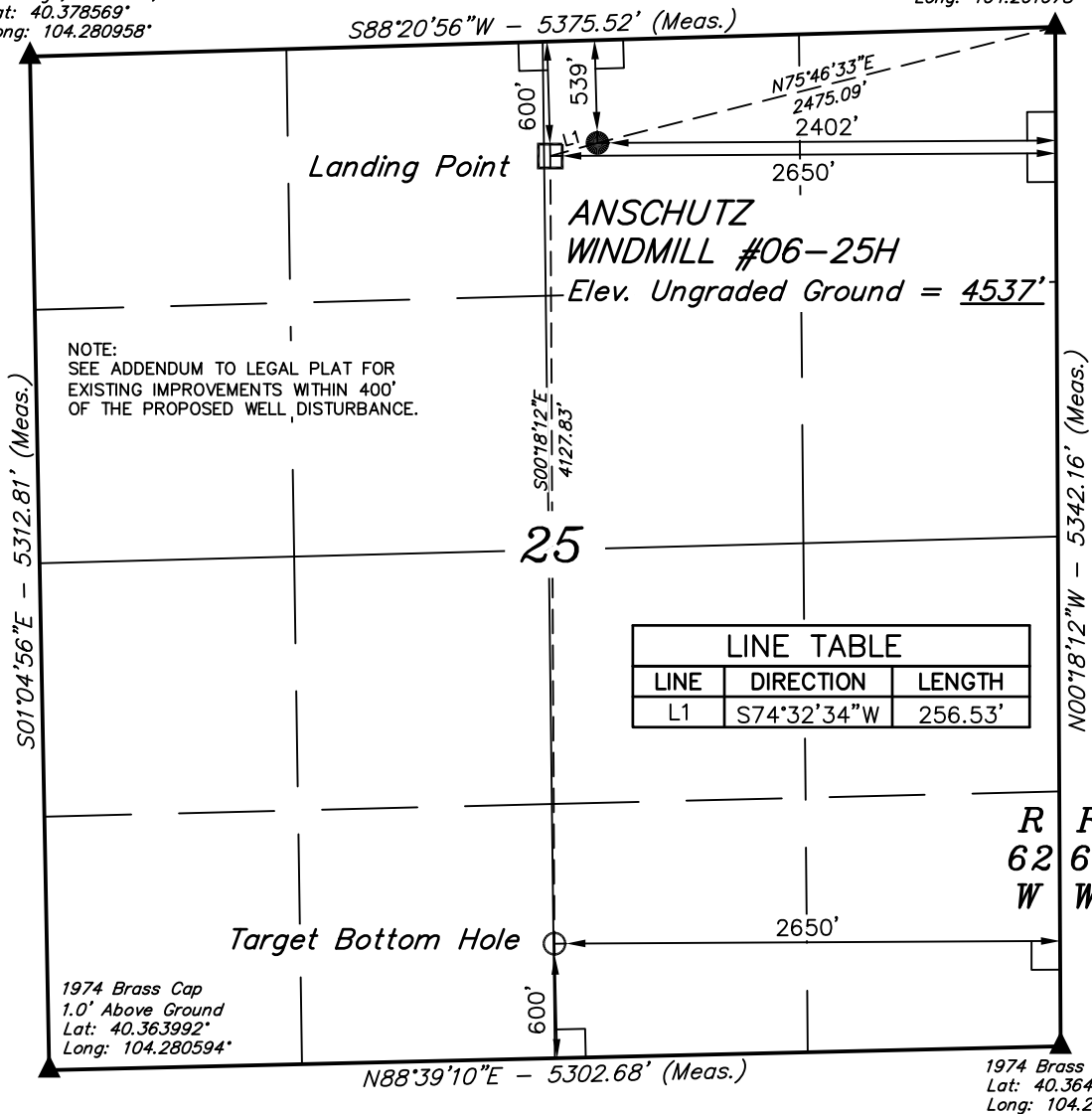


T5N, R62W, 6th P.M.

2010 UELS Alum. Cap,
0.6' High, "T" Post, Rebar
Lat: 40.378569°
Long: 104.280958°

2008 Alum. Cap
0.1' Above Ground
Lat: 40.378997°
Long: 104.261678°



BILL BARRETT CORPORATION

Well location, ANSCHUTZ WINDMILL #06-25H,
located as shown in the NW 1/4 NE 1/4 of
Section 25, T5N, R62W, 6th P.M., Weld County,
Colorado.

BASIS OF ELEVATION

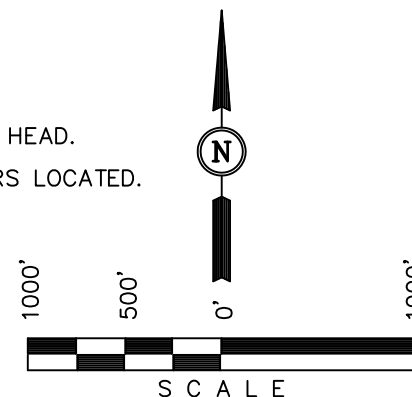
SPOT ELEVATION LOCATED AT THE NORTHWEST CORNER OF
SECTION 19, T5N, R61W, 6th. P.M. TAKEN FROM THE POINT
OF ROCKS, QUADRANGLE, COLORADO, WELD COUNTY, 7.5
MINUTE QUAD (TOPOGRAPHIC MAP) PUBLISHED BY THE UNITED
STATES DEPARTMENT OF THE INTERIOR, GEOLOGICAL SURVEY.
SAID ELEVATION IS MARKED AS BEING 4530 FEET.

BASIS OF BEARINGS

BASIS OF BEARINGS IS A G.P.S. OBSERVATION.

LEGEND:

- └ = 90° SYMBOL
● = PROPOSED WELL HEAD.
▲ = SECTION CORNERS LOCATED.



CERTIFICATE

THIS IS TO CERTIFY THAT THE ABOVE PLAT WAS PREPARED FROM
FIELD NOTES OF ACTUAL SURVEYS MADE BY ME OR UNDER MY
SUPERVISION AND THAT THE SAME ARE TRUE AND CORRECT TO THE
BEST OF MY KNOWLEDGE AND BELIEF.

REGISTERED LAND SURVEYOR
REGISTRATION NO. 17492
STATE OF COLORADO

REVISED: 12-13-12 T.B.
REVISED: 09-02-11

UINTAH ENGINEERING & LAND SURVEYING
85 SOUTH 200 EAST - VERNAL, UTAH 84078
(435) 789-1017

NAD 83 (TARGET BOTTOM HOLE)	NAD 83 (LANDING POINT)	NAD 83 (SURFACE LOCATION)
LATITUDE = 40°21'56.92" (40.365811)	LATITUDE = 40°22'37.70" (40.377139)	LATITUDE = 40°22'38.38" (40.377328)
LONGITUDE = 104°16'15.94" (104.271094)	LONGITUDE = 104°16'16.23" (104.271175)	LONGITUDE = 104°16'13.03" (104.270286)
NAD 27 (TARGET BOTTOM HOLE)	NAD 27 (LANDING POINT)	NAD 27 (SURFACE LOCATION)
LATITUDE = 40°21'56.99" (40.365831)	LATITUDE = 40°22'37.77" (40.377158)	LATITUDE = 40°22'38.45" (40.377347)
LONGITUDE = 104°16'14.11" (104.270586)	LONGITUDE = 104°16'14.40" (104.270667)	LONGITUDE = 104°16'11.21" (104.269781)
STATE PLANE NAD 83	STATE PLANE NAD 83	STATE PLANE NAD 83
N: 1378478.27 E: 3342424.77	N: 1382604.27 E: 3342345.30	N: 1382676.50 E: 3342591.61
STATE PLANE NAD 27	STATE PLANE NAD 27	STATE PLANE NAD 27
N: 378480.20 E: 2342574.83	N: 382606.07 E: 2342495.33	N: 382678.31 E: 2342741.64

SCALE 1" = 1000'	DATE SURVEYED: 05-04-11	DATE DRAWN: 05-12-11
PARTY L.S. A.G. J.J.	REFERENCES G.L.O. PLAT	
WEATHER WARM	FILE BILL BARRETT CORPORATION	